



AltRider Crash Bars for BMW R 1250 GS Adventure INSTALLATION INSTRUCTIONS

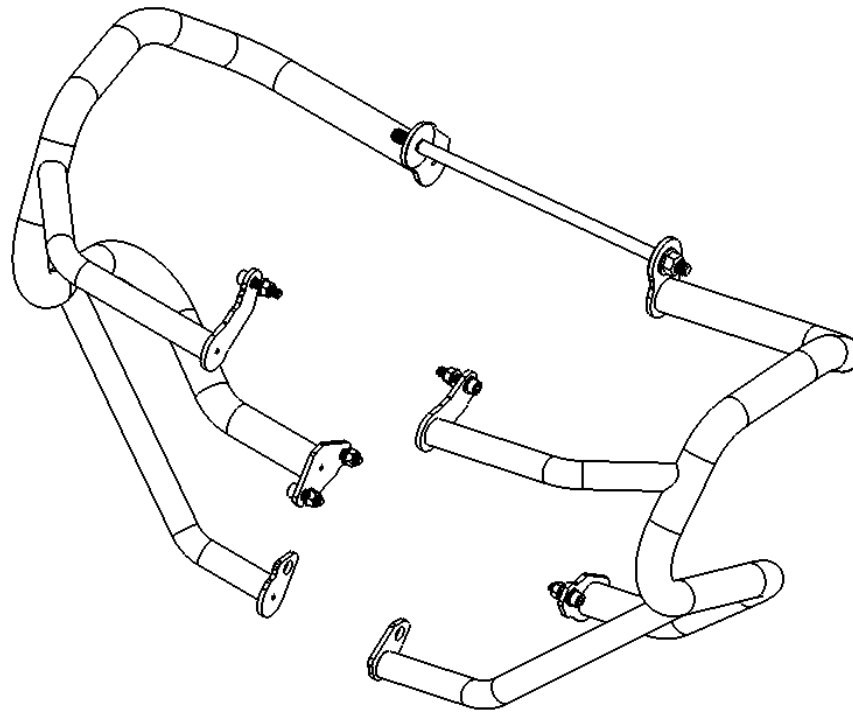
The most up to date instructions can be downloaded from the product page at altrider.com, under the instructions tab.

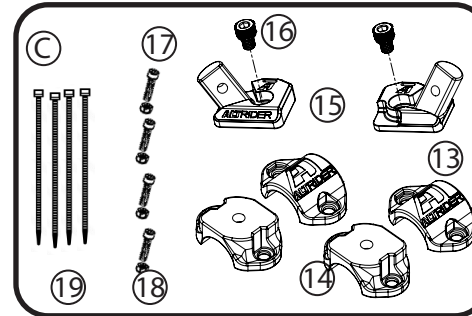
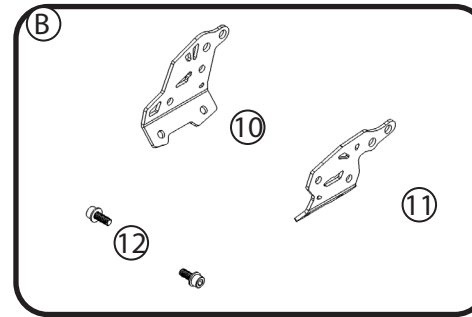
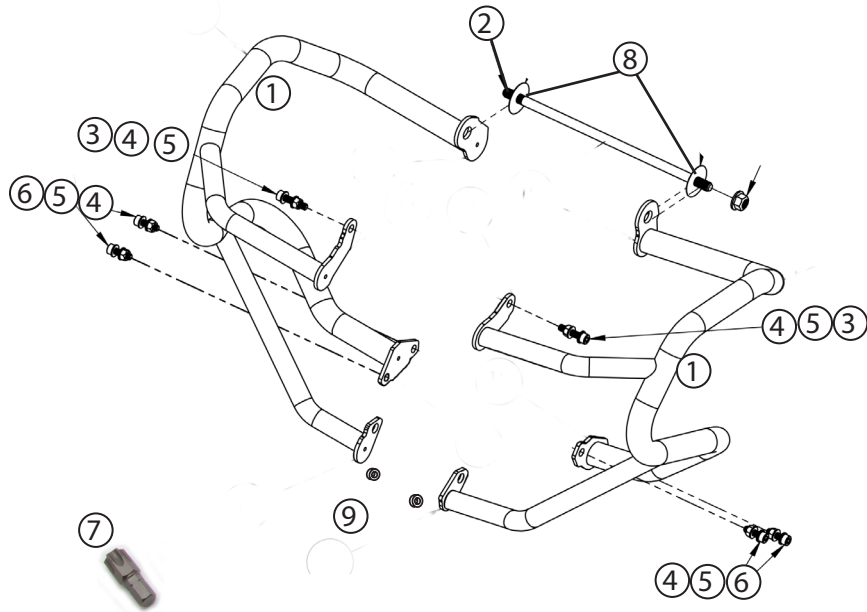
Dear Rider,

Thank you for choosing AltRider! Whether a seasoned world adventurer or a first time ADV-Newbie, we welcome you to the AltRider experience. You can install your new product with the utmost confidence. AltRider designs, tests, and manufactures all of its products here in the United States. We are proud to do what we do, and honored to present to you the product of our labors.

Enjoy it, show it off, and most of all, RIDE IT!

Venture On,
Jeremy LeBreton





Kit:

(A) Crash Bars Contents

- ① Crash bars right and left side
- ② Replacement engine bolt w/nut
- ③ (2) M8 x 35mm SC screws
- ④ (6) M8 Serrated nuts
- ⑤ (6) M8 washers
- ⑥ (4) M8x25mm SC Screws
- ⑦ T55 Torx driver
- ⑧ (2) Nylon Paint protection discs
- ⑨ Custom Spacers

(B) Brackets

- ⑩ Right bracket
- ⑪ Left bracket
- ⑫ (2) M10 x 25 bolts

(C) Adapter Kit

- ⑬ (2) Clamp half, logo side
- ⑭ (2) Clamp half, non-logo side
- ⑮ (2) Connectors
- ⑯ (2) M8x10 mm SC Screws
- ⑰ (4) M5x15 mm SC Screws
- ⑱ (4) M5 Nylock Nuts
- ⑲ (4) Reusable cable ties

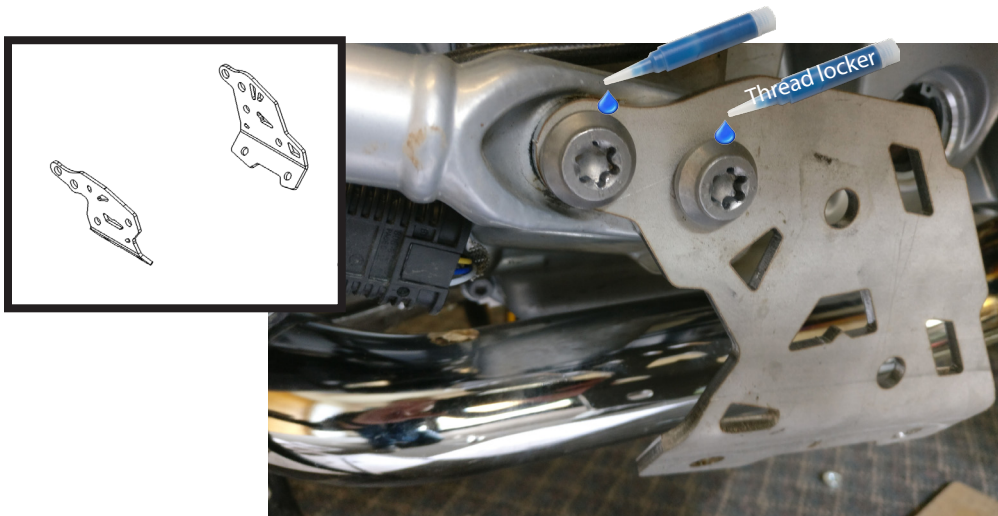
Recommended tools:

- ① Hardware tray
- ② 1/4" ratchet / 1/4" extension
- ③ 1/2" driver / 1/2" extension
- ④ 8mm socket (for T drivers)
- ⑤ M5 allen
- ⑥ M6 allen
- ⑦ 13mm wrench (ratcheting preferred)
- ⑧ Thread locker
- ⑨ 18mm socket
- ⑩ torque wrench
- ⑪ 18 mm wrench (to hold engine bolt)
- ⑫ Torx T40
- ⑬ Cutters



AltRider Skid Plate: If you also purchased the AltRider skid plate, install the skid plate first, reference skid plate instructions. If you already have AltRider skid plate installed You may skip to step #3 **NOTE:** You may need to loosen the (2) OEM M10 bolts in step 2 that hold the AltRider Bracket.

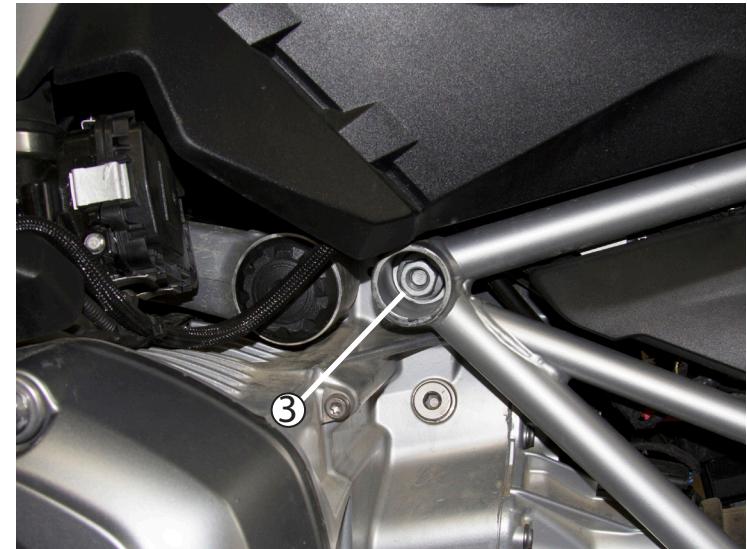
Remove the BMW lower crash bars. The upper crash bars can remain on the bike.



- ② Starting with the right side install the brackets with (2) OEM M10 Torx bolts and apply thread locker. Get all fasteners started but do not tighten yet. Repeat on the left side. See diagram above for reference. TIP: take your time getting the frame aligned with holes in engine mounts. Note: If the holes are not aligned have a helper try lifting the rear of the bike slightly to help.



- ① Using a T50 driver remove the (2) OEM M10 lower engine mount bolts on the left side.



- ③ With bike on center stand, remove OEM engine bolt using 18mm socket and T55 driver. Use a 1/4" extension to push the bolt out far enough that you can grab it and remove by hand. Save the nut for step 4.



- ④ Insert nylon paint protection disc (8) between the crashbar flange and frame boss while inserting the through bolt. Starting with the left side, partially insert engine through bolt into bars as shown above. Feed engine through bolt all the way in, allowing the bars to hang. On the right side insert right side crash bars and attach OEM nut from step 3, apply thread locker.



- ⑤ Install the (1) M8 bolt, (2) washers, and (1) lock nut to the top front mount on each side using an M6 driver and 13mm wrench.



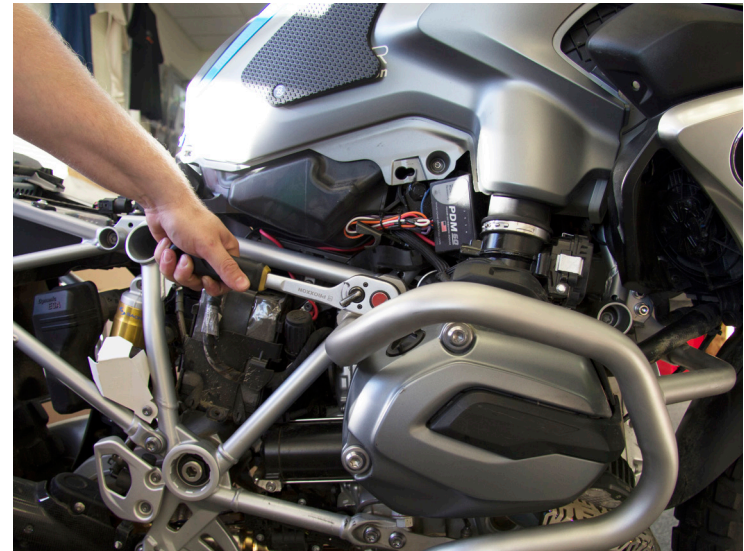
- ⑥ Install the M10 x 25mm bolt and washer, found in the bracket kit, to the front lower mount position at the bottom of the engine on each side. Insert a spacer between the flange and mounting location if not using AltRider Skid Plate. Use thread locker. Do not fully tighten yet.
Note: If the AltRider Skid Plate is installed, the flange will sit atop it.



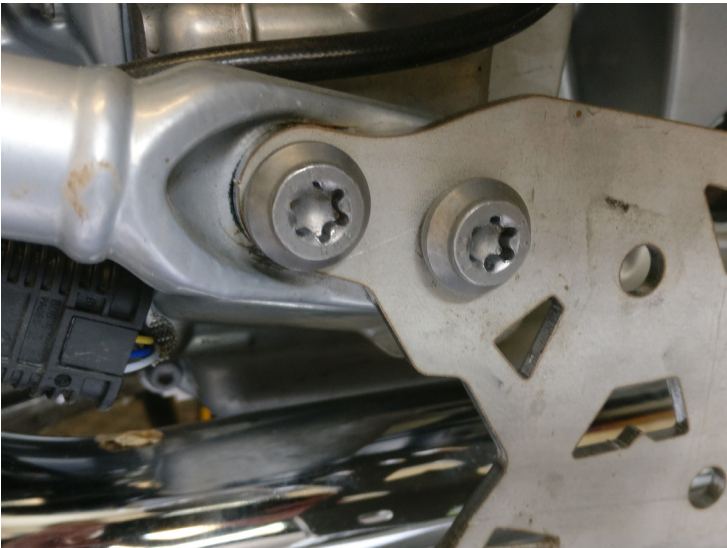
- ⑦ Install the (4) M8 x 25 bolts with (4) washers (2 on each side), tighten with (4) M8 lock nuts. Torque to 38nm



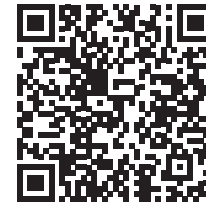
⑧ Torque the M10 bolts in step 6 to 38nm. Torque M8 bolts in step 5 to 19nm.



⑨ Using two 18 mm sockets, tighten the M12 engine bolt and then torque to 85 nm.



⑩ Return to bracket bolts listed in step #2 and torque the M10's to 55nm.



The final step is to attach the AltRider lowers to the BMW uppers. Scan the QR code with your phone (or visit the product page) to watch a brief video reviewing this process.

After riding for 100 - 500 miles check all fasteners to make sure they are at the correct torque setting.

CONGRATULATIONS!

You've completed your installation. If at any point you have questions about your installation or have any feed back for us, we'd love to hear it. A downloadable version of these instructions can be found at our web site. www.AltRider.com

After 5 hours of riding, or 100 miles, check all the fasteners on the assembly to ensure they are tightened to spec.

Global Office:

email: info@AltRider.com
phone: +1 206-922-3618
address: 3708 Airport Way S
Seattle, WA 98134

Europe Office:

email: info@AltRider.eu
address: Spectrumlaan 31
2665 NM Bleiswijk
Netherlands

TERMS OF USE, WARRANTY AND LIABILITY WAIVER

AltRider LLC, a Washington company, having its principal place of business in Seattle, WA ("AltRider") offers its motorcycle accessories (the "Product") with the terms, conditions and notices as follows:

Terms of Use

This Product is offered to you conditioned upon your acceptance without modification of the terms, conditions, and notices contained herein. Installation and/or use of this product implies acceptance of all such terms, conditions, and notices. If you do not agree to these terms, do not buy the Product. If you have already bought the Product and do not agree to these terms, return this Product promptly including the packaging and all written materials, to AltRider.

Limitation of Liability and Warranty Disclaimer

You may return your merchandise for a full refund or exchange, less any original or return shipping fees under these conditions:

1. Only if the merchandise is in 100% factory condition. Original manufacturer's packaging and same condition as sold – original boxes, packaging material, instructions, documentation, parts, and attached tags.
2. Only unused, unscratched, uninstalled, undamaged merchandise will be accepted. Do not install equipment until you are sure you want to keep it. Package items carefully in protective materials before returning them. Never ship an item in its original manufacturers packaging – it will arrive damaged. Please use a postal box or other adequate packaging to ensure your return or exchange is not damaged on the way back to AltRider.com.

To read more about our exchanges and returns policy, on the web, navigate to <http://www.altrider.com/info/exchangesAndReturns>

Excepting the warranties stated in the preceding paragraph, AltRider hereby disclaims all other warranties and conditions with regard to the Product including all implied warranties and conditions of merchantability and fitness for a particular purpose. There are no warranties which extend beyond the description on the face hereof. AltRider does not warrant against damages or defects arising out of use or installation of the Product. Installation instructions are provided for your convenience. AltRider is not responsible for any damages arising out of the installation, improper or otherwise, of the Product. No warranty of any kind, expressed or implied, is made regarding the safety of this Product.

To the extent allowed by law, AltRider shall not be held liable for any direct, indirect, punitive, incidental, special or consequential damages arising out of, or connected with, the use or misuse of this Product. Buyer assumes all risks and liability arising from use of this Product.

Entire Agreement

This document states the entire obligation of AltRider with respect to the Product. If any part of this agreement is determined to be void, invalid, unenforceable or illegal, including, but not limited to the warranty disclaimers and liability limitations set forth above, then the remainder of the agreement shall remain in full force and effect.

Applicable Law

This agreement is governed by the laws of Washington, USA. You hereby consent to the exclusive jurisdiction and venue of the courts of Washington, USA, in all disputes arising out of or relating to the use of this product.

