

Arctic Cat®

Installation Instructions - Accessory Kit

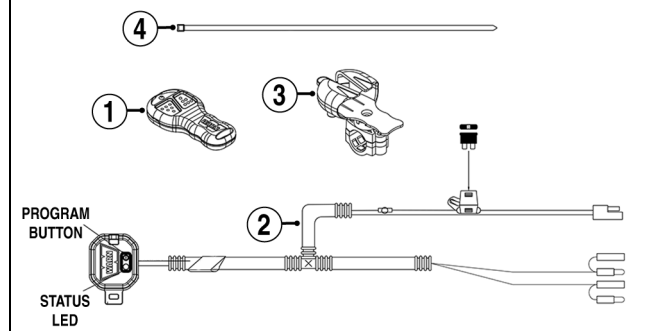
Wireless Remote Control Upgrade Kit (p/n 2436-110)



■ **NOTE:** Read these Installation Instructions thoroughly before beginning the installation process. Retain these Installation Instructions for future reference.

Kit includes:

Ref. No.	p/n	QTY	DESCRIPTION
1	2441-108	1	Wireless Remote
2	3441-082	1	Wireless Receiver/Harness
3	3441-083	1	Wireless Remote Holster
4	N/A	6	Cable Tie
N/A	1453-046	1	Instruction



CAUTION

ALWAYS KNOW YOUR WINCH: Before doing a system check, take time to fully understand your winch and the winching operation by reviewing the Basic Guide to Winching Techniques, included with your winch.

INSTALLING THE WIRELESS RECEIVER

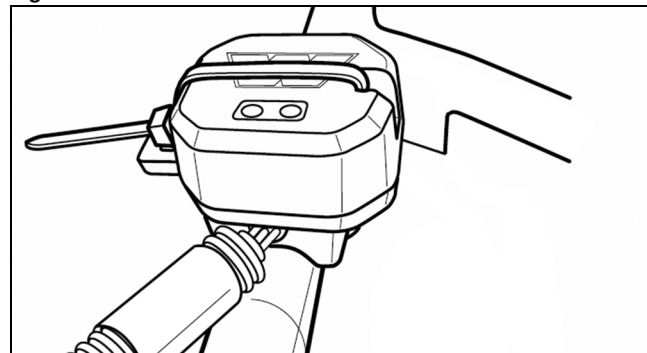
1. Disconnect the positive and negative battery cables.

⚠ WARNING

When disconnecting the battery cables, always disconnect the negative battery cable first.

2. In the desired location of the Wireless Receiver, cable tie the harness to the frame. See Fig. 1.

Fig. 1



ROV-610

■ **NOTE:** Using cable ties, secure receiver wires away from hot and/or moving components.

3. Route the receiver wires to the location of the solenoid (near the battery); then disconnect the bullet connectors on the winch harness.
4. Connect the green wire from the remote harness to the blue wire on the solenoid harness; then connect the black wire from the remote harness to the green wire on the solenoid adapter harness.

■ **NOTE:** Skip step 5 for XR ATV models.

5. Remove the green and black rubber caps from the ends of the second set of connectors on the remote harness. Connect the green wire from the switch control harness to the green wire on the remote harness and the blue wire from the switch control harness to the black wire on the remote harness.
6. Route the style 21 connector from the receiver harness to the accessory plug-in and connect.
7. Connect the positive battery cable and the negative battery cable.

■ **NOTE:** If the “IN” button causes the winch to cycle the winch cable outward, reverse the wire connections from step 4.

MOUNTING THE HOLSTER

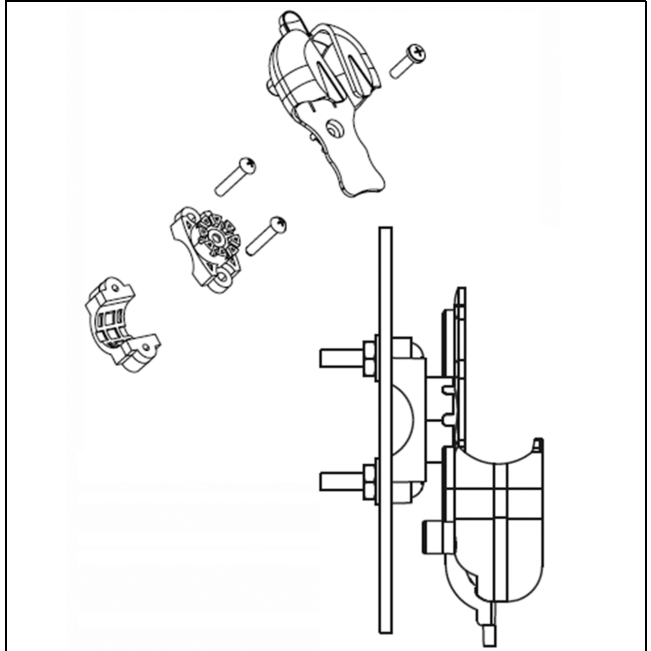
⚠ WARNING

Always use caution when moving or repositioning any vehicle controls so as to not compromise the safe operation of the winch or vehicle. Select a mounting position that will provide clearance for all vehicle controls. Never attempt to bypass receiver by connecting switches directly to contactor.

1. For ATV use, the typical location for the holster is on the left handlebar.

2. The holster clamp must be mounted before assembling. See Fig. 2.

Fig. 2

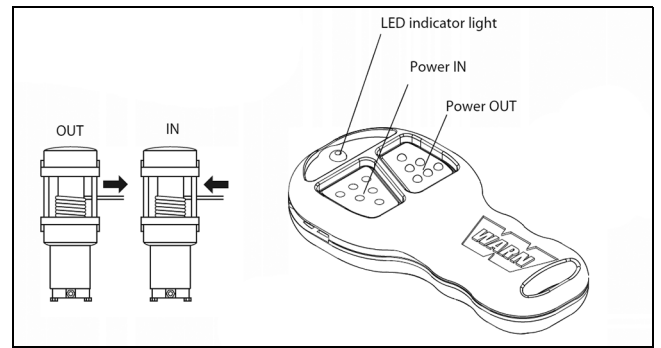


3. Do not tighten over any hoses, cables, or wiring.
4. The clamp is designed to prevent rotation. If necessary, a piece of electrical tape around the handlebar may be used to help prevent slipping.
5. For ROV's, the holster may be mounted on the dash or other convenient surface using two #10 or M5 machine screws and locknuts.
6. Assemble the holster as shown in Fig. 2. Holster may be oriented in any one of eight positions.

SYSTEM CHECK LIST

1. Insure that wiring to all components is correct and all loose wires are securely cable tied.
2. Insure that there are no exposed terminals or wiring. Cover any bare terminal with terminal boots, heat shrink tubing or electrical tape.
3. Turn ignition switch to the ON position.
4. Check winch for proper operation using the handlebar switch. The wire rope should spool in and out in the direction indicated on the switch. If winch functions correctly, proceed to the next step. Otherwise trouble-shoot.
5. Press and hold both buttons on the wireless handheld remote until the GREEN indicator light comes on. The wireless system is now active and ready to use.
6. By pressing the buttons on the remote, verify that the winch powers IN and powers OUT properly.

OPERATION



LED Indicator Light

Steady GREEN - system active and ready to use
Steady RED - winch powering in or out
Flashing RED during winching - battery low

1. Activate the system by pressing both buttons on the wireless remote simultaneously and holding for 3 seconds until GREEN light illuminates.
2. The winch system is now operational.
3. Press the power IN or power OUT button as needed.
4. To deactivate the system, press both buttons on the wireless remote simultaneously and holding for three seconds until the GREEN light turns off.

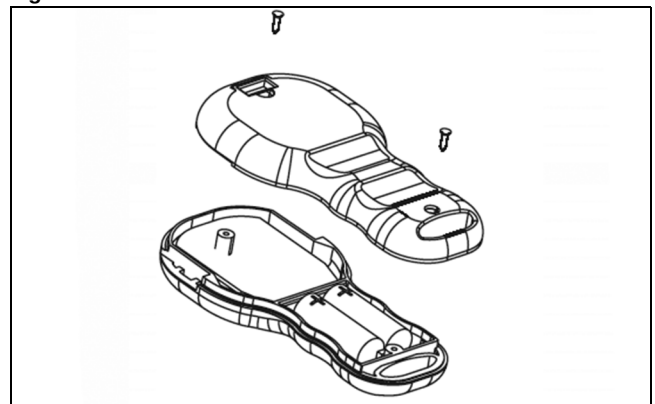
REPLACING BATTERIES

■ **NOTE:** Batteries for the wireless remote are two alkaline, 12 volt, type 23.

If the indicator light on the handheld remote flashes RED during winching, the batteries are low and should be replaced.

1. Remove the two screws from the handheld remote. See Fig. 3.

Fig. 3



2. Separate the top and bottom sections of the remote using a coin or screw driver.

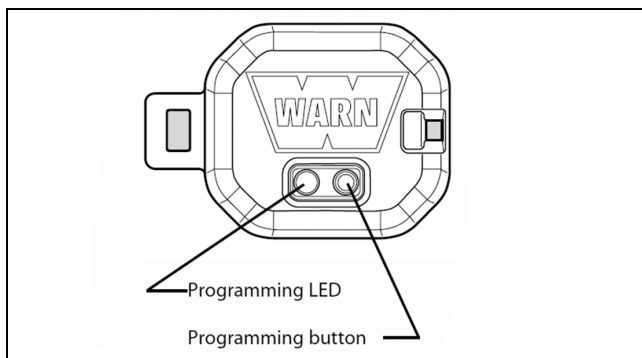
3. Remove the old batteries and dispose in accordance with local environmental regulations.
4. Insert new alkaline batteries as shown with the positive terminals facing the switches. Do not mix old and new batteries.
5. Join the top and bottom sections making sure that they snap together and rubber seal remains intact.
6. Secure with the two screws.

TROUBLESHOOTING

If the winch does not power in or out when remote buttons are pushed:

- Check that the wireless system has been activated (GREEN LED on remote is ON).
- Check all electrical connections. Verify that connections follow the wiring diagram and instructions.
- Insure that 10 seconds have passed since the standard wired control system was last used.

PROGRAMMING THE WIRELESS RECEIVER



ROV-610

CAUTION

Never attempt to service components inside wireless remote or receiver. Always consult an authorized WARN service center for service or warranty.

■ **NOTE: Receiver/Harness Fuse type and current rating is ATC 7.5 amp.**

■ **NOTE: Only one remote can be programmed for each receiver.**

The hand held remote (transmitter) is programmed from the factory to communicate with your specific receiver. Under normal circumstances programming will not be necessary. However, any replacement remote must be programmed to communicate with your receiver. Use the following procedure:

1. With the system installed properly, turn the ignition to the ON position.
2. Activate the system by pressing and holding both buttons until the GREEN LED lights up.
3. Press and hold the receiver programming button for at least five seconds until the RED LED on the receiver lights up and stays on.
4. Release the programming button.
5. Press the power IN button on the remote for at least one second until the RED LED on the receiver turns off. Programming is now complete.