

GUN DEFENDER™ HITCH MOUNT

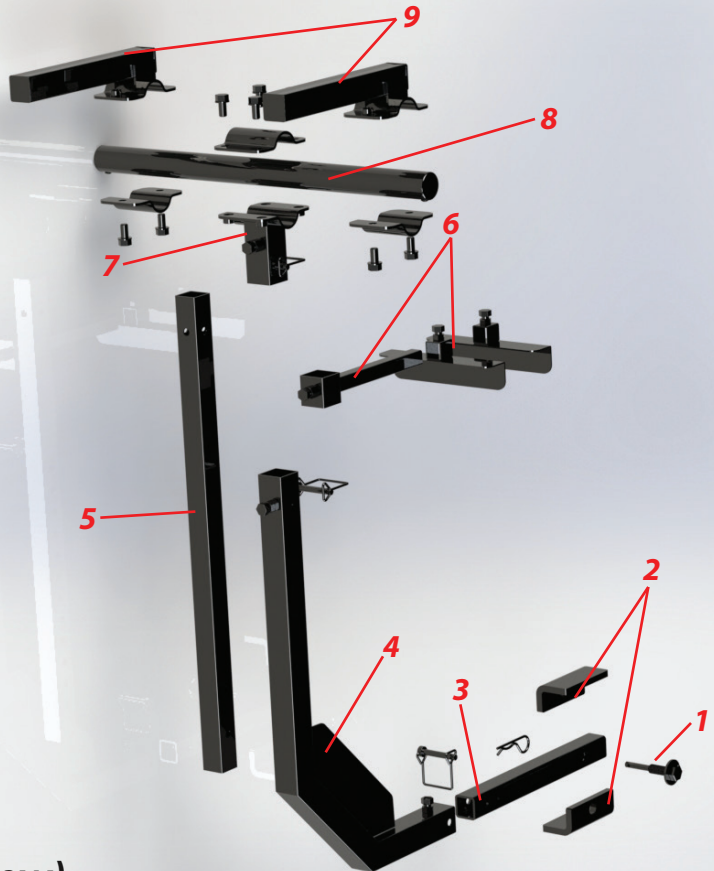
INSTRUCTIONS

READ ALL INSTRUCTIONS BEFORE PROCEEDING

**Make sure key is in the off position and the vehicle is in park and/or parking brake engaged.
Use wheel chocks in front and behind the rear wheels during installation procedure.**



(Assembled View)



(Exploded View)

1. Locate Hitch Box & Second Mounting Point

The Gun Defender™ hitch mount system is compatible with both 2" and 1 1/4" hitch boxes. 2" Hitch boxes will require the two provided adapter plates. The second mounting point needs to be a solid point on the rear of the vehicle (UTV tailgate, rear ATV gear rack, etc.).

2. Assemble the mount

Assemble the mount as pictured above. **Do not tighten the jam bolts on the components, adjustments will need to be made in the stabilizing arm, slider clamps, and the upper and lower slider adjustment bars in order to fit your vehicle.** Make sure the stabilizing arm is fitted over the upper slider adjustment bar before fitting the cross bar saddle in place.

INCLUDED IN THIS KIT

- 1** (1) Hitch Bolt
- 2** (2) Hitch Box Adapter Plates
- 3** (1) Lower Slider Adjustment Bar
- 4** (1) Angled Slider Receiving Bar
- 5** (1) Upper Slider Adjustment Bar
- 6** (1) Stabilizing Arm & (2) Slider Clamps
- 7** (1) Cross Bar Saddle
- 8** (1) Tubular Cross Bar
- 9** (2) Mounting Point Slider Bars

GUN DEFENDER™- HITCH MOUNT

INSTRUCTIONS (Continued)

3. Attach the Mount to the Hitch Box & Adjust

The mount attaches to the hitch box with a threaded bolt and built in nut located in the end of the lower slider adjustment bar. Adjust the mount to fit your machining by sliding the upper and lower slider adjustment bars in or out appropriately. **Adjust the mount so that the stabilizing arm and slider clamps will fit over the second mounting point.** Once the mount is in the proper position, place the provided pins in the width & height adjustment slider holes and tighten the jambolts on those components. Adjust the two slider clamps so they clamp snug around the second mounting point and tighten the jam bolts.



4. Configure the Top Crossbar

The top crossbar can be configured so that the Gun Defenders™ are held in line with the vehicle or perpendicular to it. They can also be held inboard of the vehicle or outboard of it. They can be adjusted parallel with each other or in a criss-cross position. Attach and adjust the top crossbar and mounting point bars to fit your preferences and needs.



5. Attach Gun Defender™ to the Mount

The Gun Defender™ slides on and off the mounting point bars easily and locks in place with the provided pin. When you have Gun Defender™ in position on to the mounting point slider, slide the pin through the holes in the Gun Defender™ and through the holes in the mounting point bar. Lock the pin in place with the latch attached to the pin.

