

# INSTALLATION INSTRUCTIONS

PART NO. 5-601

FUEL PETCOCK REPAIR KIT

HONDA GL1500/6

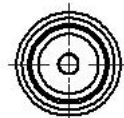
7/19/2012

TOOLS NEEDED:	#2 PHILIPS SCREWDRIVER	PLIERS	FLAT SCREWDRIVER	THREADLOCK COMPOUND
	(1) SEALING DIAPHRAGM (1) ACTUATOR DIAPHRAGM (1) COMPRESSION SPRING		(2) M4 X 0.7 X 16MM LONG PHILLIPS PAN HEAD SCREW (2) M4 X 0.7 X 20MM LONG PHILLIPS PAN HEAD SCREW (4) M4 SPRING LOCK WASHER	

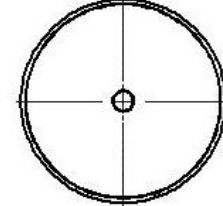
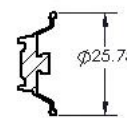
NOTE: THREAD LOCK COMPOUND SHOULD BE USED ON ALL HARDWARE  
PLEASE READ THROUGH AND UNDERSTAND THESE INSTRUCTIONS BEFORE BEGINNING.  
YOU MAY WANT TO HAVE AN AUTHORIZED MECHANIC INSTALL THIS REPAIR KIT.

**INSTALLATION**

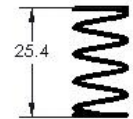
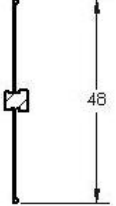
- REMOVE THE NEGATIVE BATTERY CABLE.
- REMOVE TOP COVER PANEL ABOVE THE GAS TANK.
- LOCATE THE FUEL PETCOCK MOUNTED NEXT TO THE INLINE FUEL FILTER.
- USING PLIERS SLIDE THE THREE HOSE CLAMPS AWAY FROM THE PETCOCK ABOUT 1 INCH (25MM).
- USING A FLAT SCREWDRIVER CAREFULLY REMOVE THE THREE HOSES FROM THE PETCOCK.
- REMOVE THE TWO LOWER M4 X 0.7 X 20MM LONG SCREWS THAT HOLD THE PETCOCK TO THE MOUNTING BRACKET. (THESE SCREWS WILL NOT BE REUSED)
- THE PETCOCK SHOULD NOW BE FREE AND CAN BE REMOVED FROM THE BIKE; WITH PETCOCK REMOVED DRAIN ANY FUEL STILL IN THE HOUSING.
- HOLDING THE PETCOCK PLATES TOGETHER REMOVE THE TWO M4 X 0.7 X 16MM LONG SCREWS. SLOWLY RELEASE THE PRESSURE AND SEPARATE THE FIRST TWO PLATES. *NOTE: PAY CLOSE ATTENTION TO HOW THE INTERNAL COMPONENTS ARE ORIENTATED WHEN DISASSEMBLING.*
- REMOVE THE OLD COMPRESSION SPRING. (THIS SPRING WILL NOT BE REUSED)
- REMOVE THE CENTER PLATE, NOTICE THE VENT HOLE IN THE CENTER PLATE WILL FACE THE BOTTOM OF THE ASSEMBLY.
- COMPRESS THE SEALING DIAPHRAGM AND REMOVE THE DIAPHRAGM ASSEMBLY FROM THE CENTER PLATE.
- REMOVE THE WHITE PLASTIC DISC FROM THE ACTUATOR SIDE OF THE DIAPHRAGM.
- TAKE THE NEW ACTUATOR DIAPHRAGM AND LOCATE THE SIDE WITH THE SMALLER CENTER NUB, INSTALL DISC ON THAT SIDE WITH THE SMOOTH SIDE OF THE DISC TO THE DIAPHRAGM.
- REMOVE OLD ACTUATOR DIAPHRAGM FROM THE CENTER SPACER AND ATTACH NEW ACTUATOR DIAPHRAGM TO CENTER SPACER.
- REMOVE OLD SEALING DIAPHRAGM FROM THE CENTER SPACER AND ATTACH NEW SEALING DIAPHRAGM TO THE CENTER SPACER.
- COMPRESS SEALING DIAPHRAGM AND INSTALL NEW ASSEMBLY TO THE CENTER PETCOCK PLATE.
- POSITION BOTH DIAPHRAGMS SO THAT THE OUTER RING SEAT INTO THE GROOVES ON THE CENTER PLATE.
- MOUNT THE CENTER PLATE ON MAIN PETCOCK HOUSING WITH VENT HOLE POINTING DOWN.
- POSITION NEW COMPRESSION SPRING IN THE CENTER RING OF THE WHITE PLASTIC DISC.
- SET OUTER PLATE ON TOP OF THE COMPRESSION SPRING MAKING SURE SPRING IS CENTERED.
- COMPRESS PLATES TOGETHER AND INSTALL THE TWO NEW M4 X 0.7 X 16MM LONG SCREWS WITH LOCK WASHERS IN THE UPPER HOLES OF THE ASSEMBLY USING THREADLOCKING COMPOUND.
- POSITION PETCOCK ASSEMBLY BACK IN MOUNTING BRACKET ON THE BIKE AND INSTALL THE TWO NEW M4 X 0.7 X 20MM LONG SCREWS WITH LOCK WASHERS USING THREADLOCKING COMPOUND.
- ATTACH THE THREE FUEL AND VACUUM LINES AND SLIDE THE HOSE CLAMPS BACK INTO POSITION.
- ATTACH GAS TANK COVER PANEL AND CONNECT BATTERY CABLE.



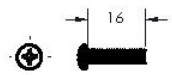
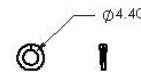
SEALING DIAPHRAGM



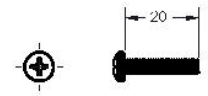
ACTUATOR DIAPHRAGM



COMPRESSION SPRING

M4 X .7 X 16 PHILLIPS  
PAN HEAD MACHINE SCREW

M4 SPRING LOCK WASHER

M4 X .7 X 20 PHILLIPS  
PAN HEAD MACHINE SCREW