



# FANG® HEADLIGHT BEZEL WITH TURN SIGNALS

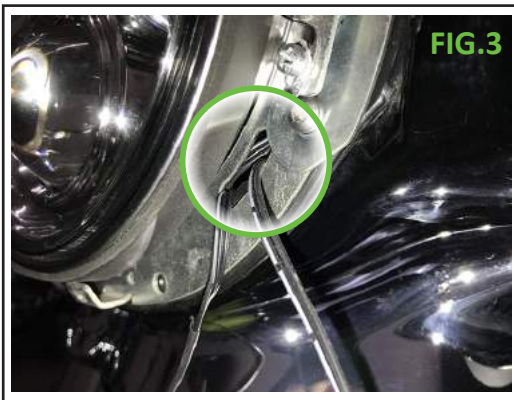
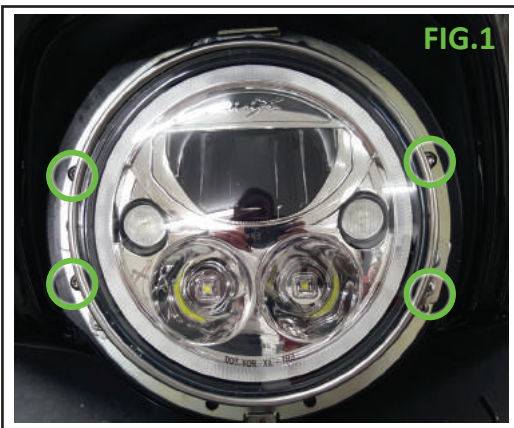
## PARTS INCLUDED

- 1 Fang Headlight Bezel
- 1 Installation Kit

### INSTALLATION INSTRUCTIONS:

- 1) Park on a level surface and shut off the motorcycle. Ensure that the engine has time to cool before installation.
- 2) Secure motorcycle, it may be best to hold in an upright vertical position.
- 3) Place a soft cloth on the front fender, then remove the outer fairing. Unplug the headlight.
- 4) Set the outer fairing on a non abrasive surface where you will be able to install the Fang Headlight Bezel.
- 5) Remove the stock headlight trim ring. Set aside the screws for re-installation.
- 6) Remove the headlight bracket screws, one side at a time. Set aside the screws for re-installation. (FIG.1)
- 7) Slide the included mounting brackets into place. The grommets will be held up off the fairing. Reinstall the stock screws, one side at a time. Do not over tighten. (FIG.2)
- 8) Route the Fang Headlight Bezel wires into the fairing through the hole below the headlight. Check that the wires are not pinched. (FIG.3)

NOTE: The wiring connector makes this a tight fit. Use caution.



### WARNING:

This indication alerts you to the fact that ignoring the contents described herein can result in potential serious injury or death if not followed.

### CAUTION:

This indication alerts you to the fact that ignoring the contents described herein can or will result in material damage and/or personal injury.

### ATTENTION:

This indication alerts you to the fact that if you ignore this detail you will affect the performance or functionality of the product.

All Ciro products are designed for "easy assembly" and/or "plug and play". We recommend a competent mechanic install our products, using standard mechanical procedures to assure a safe and successful installation.

### NOTE:

Ciro® warrants that products sold hereunder to the original purchaser, if maintained and operated under normal conditions, shall be free from any defects in materials and workmanship for a period of (3) years from date of purchase, and a lifetime warranty against LED failure.

Ciro will have no obligation if the customer cannot show proof of purchase.

Warranty will not be granted unless the part is properly installed and maintained.

Ciro will not be liable for any consequential and incidental damages, including labor, or non-Ciro products.

Please visit our website [Ciro3d.com](http://Ciro3d.com) for our complete warranty policy.



- 9) Press the darts on the Fang Headlight Bezel into the grommets on the new brackets.  
Reinstall the bezel retaining screw. (FIG.4)
  - 10) Remove the left and right front turn signal mounts and unplug them. Set them aside for re-installation.
  - 11) Connect the Y harness to the turn signal connector. Push the wires into the side of the fork. Leave one female connector outside to plug the turn signal into. Repeat on both sides of the motorcycle. (FIG.5) (FIG.6)
- NOTE. It will help to have a friend hold the fairing at the front of the motorcycle for the next steps.
- 12) Place the fairing up near its installed position and plug the Fang Headlight Bezel wires into each Y harness.  
Turn on the ignition and check the turn signal functions.
  - 13) Check the wires to make sure they are not pinched. Secure the wires with the included zip ties.
  - 14) Plug in the headlight. Re-install the fairing per factory specifications.
  - 15) Plug in and reinstall the turn signal mounts.

