



- WARNING** This indication alerts you to the fact that ignoring the contents described herein can result in potential serious injury or death if not followed.
- CAUTION** This indication alerts you to the fact that ignoring the contents described herein can or will result in material damage and/or personal injury.
- ATTENTION** This indication alerts you to the fact if you ignore this detail you will affect the performance or functionality of the product.

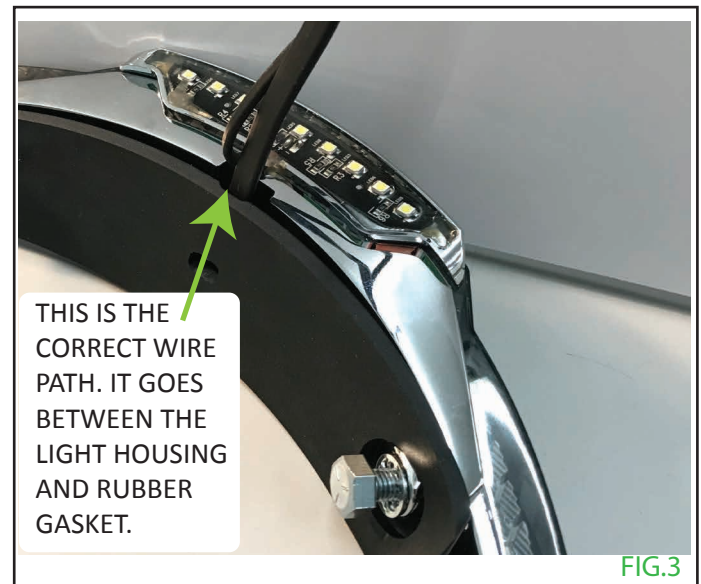
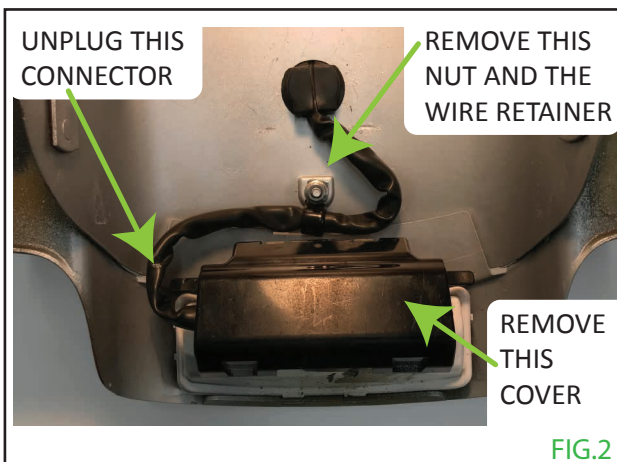
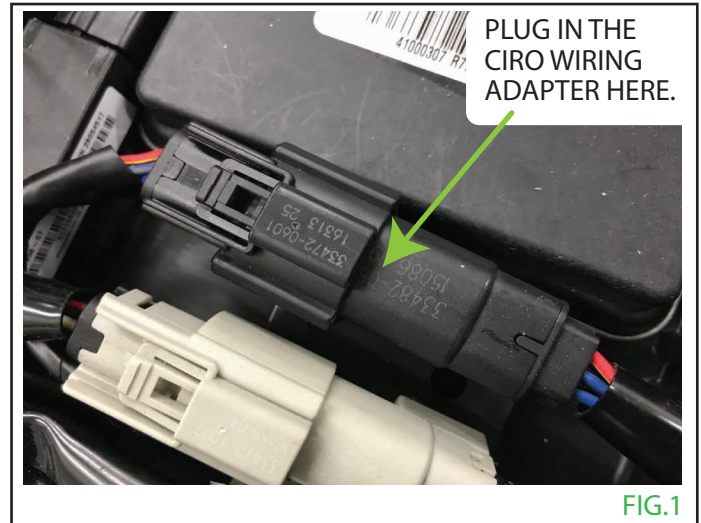
All Ciro products are designed for "easy assembly" and/or "plug and play". We recommend a competent mechanic install our products, using standard mechanical procedures to assure a safe and successful installation. Read completely and understand the instructions prior to starting installation.

NOTE: Ciro products are designed and manufactured under very strict quality control. Ciro warrants that products sold to the original purchaser shall be free from any defects in materials and workmanship for a period of 3 (three) years from the date of purchase, and a limited lifetime warranty against LED failure. Ciro will have no obligation if the customer cannot show proof of purchase. Warranty will not be granted unless the part is properly installed, unmodified and maintained. Ciro will not be liable for any consequential and incidental damages, including labor, or non-Ciro products. Please visit Ciro3d.com for our complete warranty policy.

Installation Instructions

1. If possible, put the motorcycle on a lift, center stand or other type of stable jack.
2. Remove seat and saddlebags.
3. Install the wiring adapter. Plug in the Ciro Latitude Light to familiarize yourself with connector locations, the light, and how it functions. Unplug the light and it set aside. FIG.1
4. Under the rear edge of the fender there is a light module with plugs entering on both the left and right side. Remove the black plastic cover and set aside. Disconnect the wiring connector on the right side. Place the 1" x 1/2" foam plug in the empty wiring socket, then reinstall the black plastic cover. FIG.2
5. Use a 7/16" socket to remove the 1/4" wire retainer nut. Set the nut aside to re-use in step 11. FIG.2
6. Use a 1/2" socket to remove the 5/16" bolts holding the stock Stop/Tail/Turn light bar. Remove the light bar and license holder. Set the wire retainer aside to re-use. FIG.2
7. Install the Ciro light bar and its matching rubber gasket. Use the 5/16-24 bolts and lock washers, finger tight only. The wire cable goes between the light housing and gasket. FIG. 3

- Included Items:**
- 1 Tail Light and Base
 - 1 Tail Light Gasket
 - 1 License Base and Pad
 - 1 License Frame
 - 1 Wiring Adapter
 - 1 Hardware Kit



FCC STATEMENT Changes or modifications not expressly approved by the party responsible for compliance could void the user's authority to operate the equipment. This equipment has been tested and found to comply with the limits for a Class B digital device, pursuant to Part 15 of the FCC Rules. These limits are designed to provide reasonable protection against harmful interference in a residential installation. This equipment generates uses and can radiate radio frequency energy and, if not installed and used in accordance with the instructions, may cause harmful interference to radio communications. However, there is no guarantee that interference will not occur in a particular installation. If this equipment does cause harmful interference to radio or television reception, which can be determined by turning the equipment off and on, the user is encouraged to try to correct the interference by one or more of the following measures: Reorient or relocate the receiving antenna. Increase the separation between the equipment and receiver. Connect the equipment into an outlet on a circuit different from that to which the receiver is connected. Consult the dealer or an experienced radio/TV technician for help. This device complies with part 15 of the FCC rules. Operation is subject to the following two conditions: (1) this device may not cause harmful interference, and (2) this device must accept any interference received, including interference that may cause undesired operation. This equipment complies with FCC radiation exposure limits set forth for an uncontrolled environment. This equipment should be installed and operated with minimum distance 20cm between the radiator & your body.

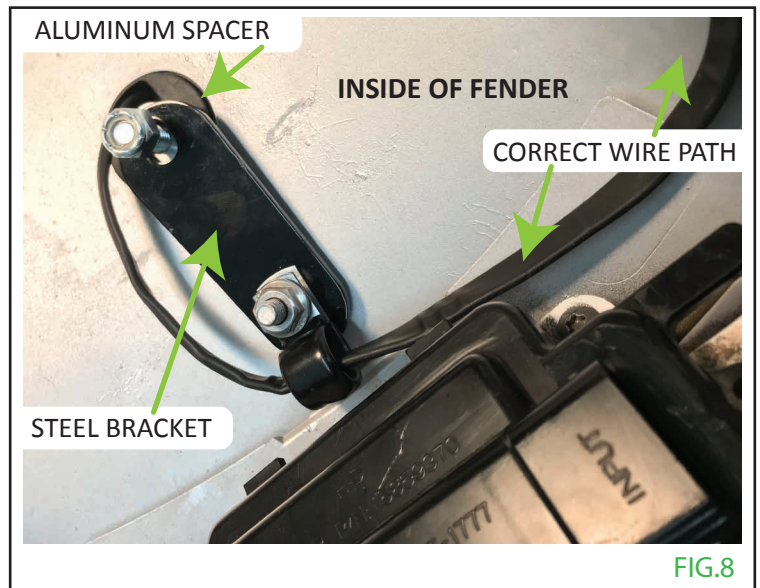
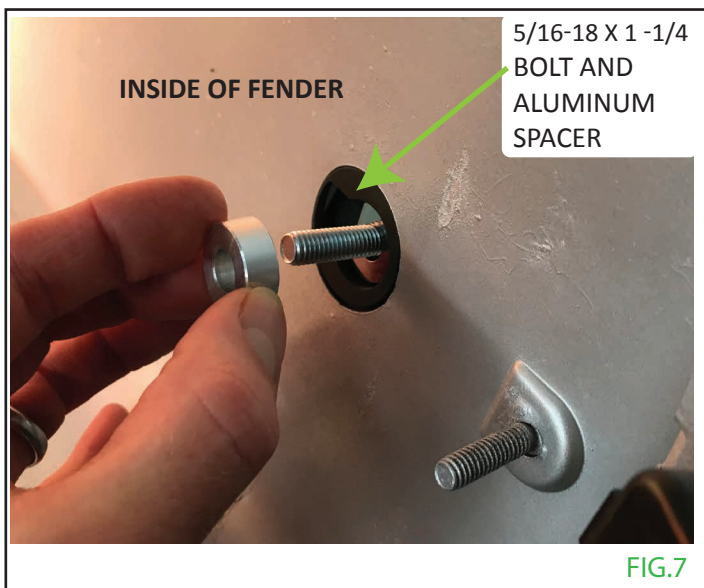
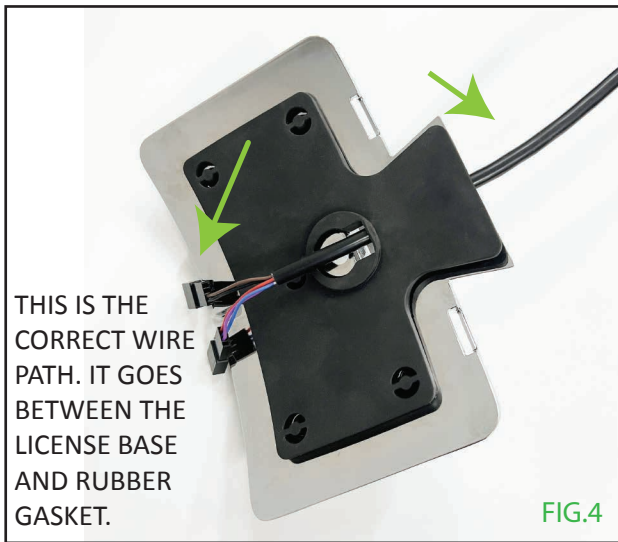
8. Route the wire cable through the license plate base. The wire cable passes between the chrome and rubber gasket then comes out through the hole in the rubber and into the fender. FIG. 4

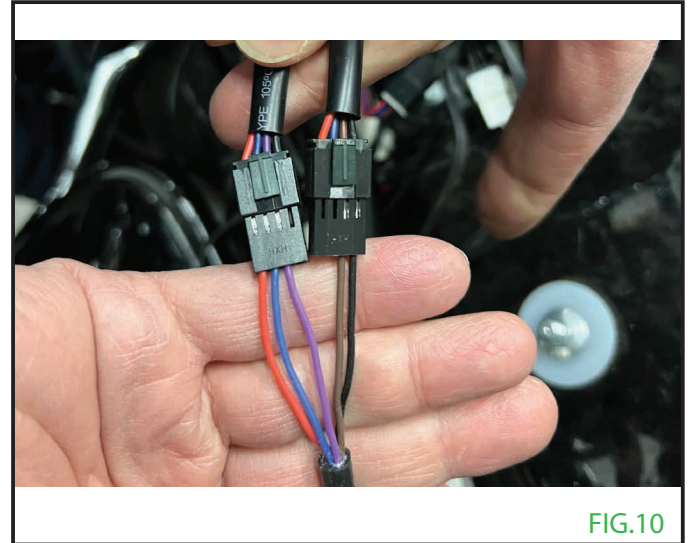
9. Move the license plate holder up to the bottom of the light housing keeping it tight to the fender. Install the 5/16"-18 x1-1/4 bolt in the license holder and into the fender. FIG. 5-6

10. Under the fender, hold the steel bracket over the 5/16" bolt, aluminum spacer, and 1/4" stud. Use a 1/2" socket to install the 5/16" nut. FIG. 7-8

11. Run the wire cable through the wire cable retainer and use a 7/16" socket to install the 1/4" nut. FIG. 8

12. Check that the wire cable is not pinched, follows a smooth path, and is close to the fender. FIG. 8





13. Run the wire cable out the lower left side of the fender, closely following the OEM wire cable. FIG. 8-9

14. The wire cable will pass upward behind the filler panel on the outside of the fender, follow the OEM wire cable to the front of the fender support, then pass the wire cable up under the fender support between the frame and into the seat pan area above the battery. Zip tie the new wire cable to the OEM wire cable every few inches. FIG. 9.

15. Locate the two four pin connectors coming off the replacement harness installed from Step 3. Make sure to connect the clips with brown and purple wires from the taillight to their respective clips, these are the turn signal wires. FIG. 10

16. Gently bend your license plate with your hands until the curve matches the base plate. Then lay the license plate onto the base and install the frame over it.

17. Install the #8-32 Allen screw and lock washer into the bottom of the license frame. Make sure that the screw is behind the license plate.

18. CAUTION: Check that the tail light and license holder are level with the motorcycle and tighten all fasteners.

19. Turn on the motorcycle's ignition power and verify that the light is functioning correctly by activating the brake and turn signals.

20. Reinstall seat and saddlebags.

21. To use Lightstrike follow the included instructions.

LIGHTSTRIKE™

Lightstrike uses your smartphone and Bluetooth to control this product.

- 1) Download the Lightstrike app where you get your iOS or Android phone apps.
- 2) The default password is 000000 (six zeros).
- 3) For additional information and video scan the QR code.

