

KIMPEX®

CLICKnGO_{LT}

PLOW MOUNT CNG LT
INSTALLATION INSTRUCTIONS

POLARIS 850-1000

873001

Polaris 850-1000

KIMPEX N° **873001**



**READ CAREFULLY THE FOLLOWING INSTRUCTIONS TO
 AVOID INJURY OR DEATH.**



WARNING (prevent injuries or death)

- Do not exceed 8km/h (5mph) when the snow plow is install on the vehicle
- Use accessory very carefully on hazardous terrain and slopes.
- Stay away from the plow and moving parts while in use.
- While piling up the snow, start backing up before rising the plow.
- Slow down before pushing the plow in the snow.
- Pay attention to obstacles that might be hidden in the snow.
- Use in extreme cautious and at low speed.

WARNING (to prevent injuries to yourself or others)

- Before using, read the document entirely, the cautions on the plow frame and the manual of your vehicle.
- Always wear a helmet, security glasses and appropriate protective shoes while using the vehicle.
- Never let anyone sit or stay on the plow or anywhere else than the seat meant for it.
- Stay far away any person or vehicle while in movement.
- Before adjusting the angle of the plow, stop the vehicle engine, apply the safety brake, then raise (leave on accessory) and lock the shovel in the raised position. Never lift the shovel with your hands. Use the winch.
- When the vehicle is not use, shut down the moto, put the safety break and lower the plow.
- Remove the plow frame for all other use of the vehicle.

Fits on

Push frame clickNgo LT	873000
Plow clickNgo	
50in	373960
54in	373952
60in	373953

BOLT	TIGHTNING TORQUES			
	GRADE 5.8	GRADE 8.8	GRADE 10.9	GRADE 12.9
M6	7.5 ± 1.0 N•m (66 ± 9 lbf•in)	10.0 ± 2.0 N•m (89 ± 18 lbf•in)	12.8 ± 2.2 N•m (113 ± 19 lbf•in)	16.0 ± 2.0 N•m (142 ± 18 lbf•in)
M8	15.3 ± 1.7 N•m (135 ± 15 lbf•in)	24.5 ± 3.5 N•m (18 ± 3 lbf•ft)	31.5 ± 3.5 N•m (23 ± 3 lbf•ft)	40.0 ± 5.0 N•m (30 ± 4 lbf•ft)
M10	29 ± 3 N•m (21 ± 2 lbf•ft)	48 ± 6 N•m (35 ± 4 lbf•ft)	61 ± 9 N•m (45 ± 7 lbf•ft)	73 ± 7 N•m (54 ± 5 lbf•ft)

INSTALLATION INSTRUCTIONS

PLOW MOUNT CNG LT

KIMPEX®

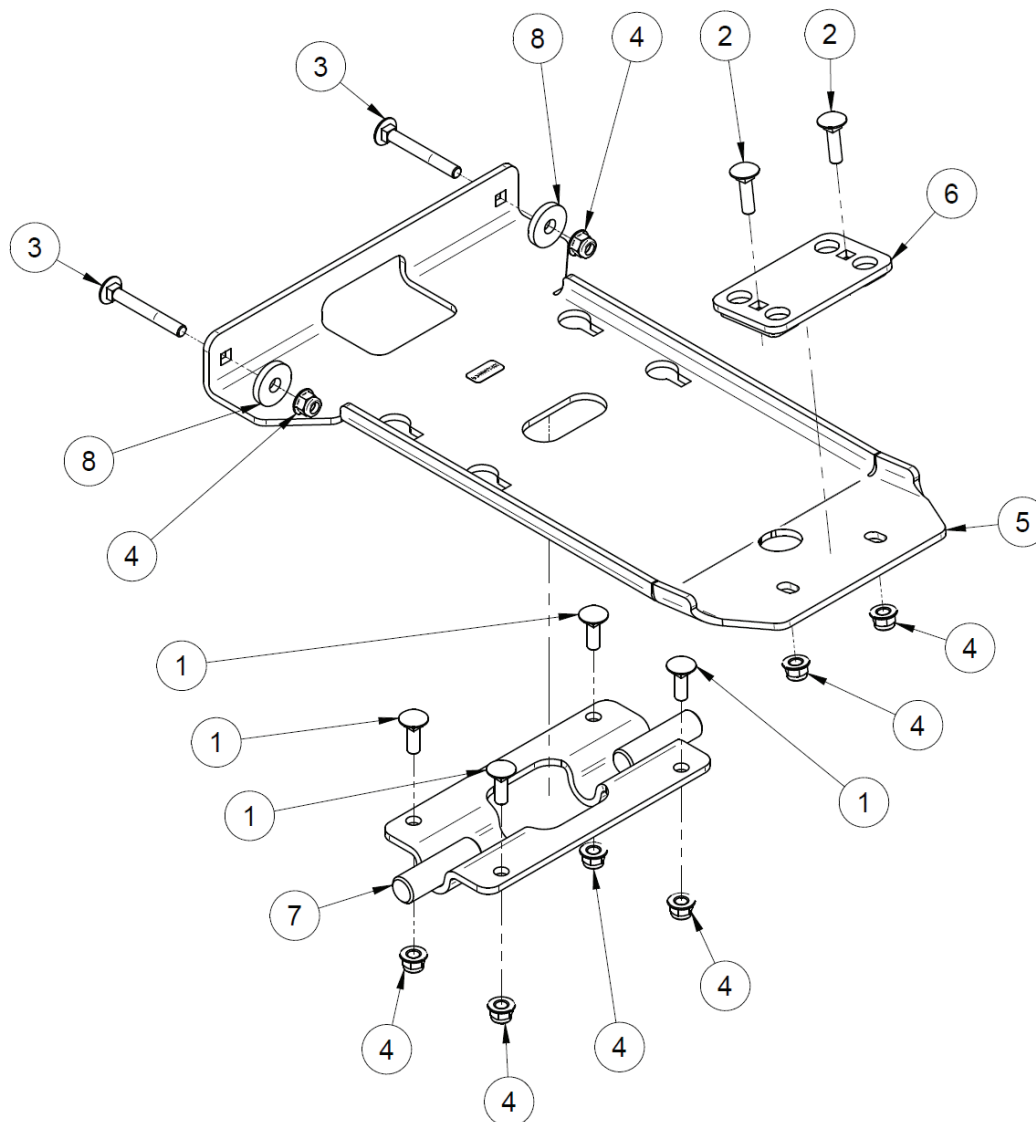
Polaris 850-1000

KIMPEX N° **873001**

Bill of material

Ref	Description	Qty
1	Carriage bolt M8-1.25 x 25mm	4
2	Carriage bolt M8-1.25 x 30mm	2
3	Carriage bolt M8-1.25 x 65mm	2
4	nut M8-1.25	8
5	Main plate	1
6	Rear bracket	1
7	V plate	1
8	Washer	2

Exploded view



Polaris 850-1000

KIMPEX N° **873001**

PREPARATION

1. Remove the front bumper.



Polaris 850-1000

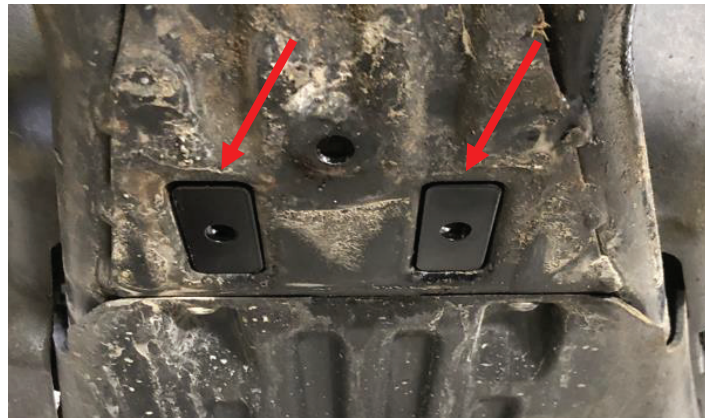
KIMPEX N° **873001**

INSTALLATION

2. Place the rear bracket (6) on the vehicle frame.



3. Make sure that the rectangular shape goes through the opening of the skid plate.



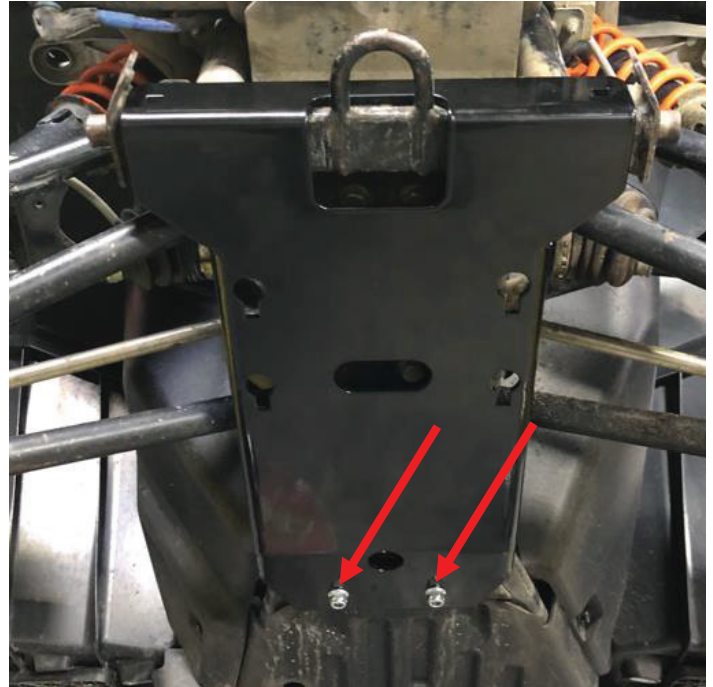
4. Insert the carriage bolt 30mm (2) through the rear bracket (6).



Polaris 850-1000

KIMPEX N° **873001**

5. Position the main plate (5) by fitting the frame ring through the opening, then secure the back with 2 nuts (4) on the carriage bolts (2) installed previously.



6. Fixe the front part of the main plate (5) with the carriage bolts (3), washers (8) and nuts (4).



Polaris 850-1000

KIMPEX N° **873001**



7. Tighten all bolts with the recommended torque.



8. Put the 4 carriage bolts (4) through the holes of the V plate (7) with the nuts (4). Tighten by hands.



Polaris 850-1000

KIMPEX N° **873001**

9. Install the V plate (7) on the main plate (5) by inserting the heads of the 4 carriage bolts (1) into the round parts of the water drop openings.

Slide the assembly to the bottom of the water drop opening.

Tighten the nuts (4) to the recommended torque.



FINALIZATION

10. Re-install the front skid plate that was removed in step 1.

