



Custom Dynamics® Low Profile LED Fender Lights for TriGlide® Installation Instructions

We thank you for purchasing the Custom Dynamics® Low Profile LED Fender Lights for TriGlide®. Our products utilize the latest technology and high quality components to ensure you the most reliable service. We offer one of the best warranty programs in the industry and we back our products with excellent customer support, if you have questions before or during installation of this product please call Custom Dynamics® at 1(800) 382-1388.

Part Numbers:

CD-TGFENDER-R CD-TGFENDER-S

Package Contents:

- Low Profile Fender Light (2)
- 4" Cable Tie (10)
- Tie Wrap Holder (6)



Fitment: 2011-2022 Harley-Davidson® TriGlide (FLHTCUTG), and 2020-2022 CVO TriGlide (FLHTCUTGSE).

Note: Functions as brake & turn only on 2020-2022 CVO TriGlide (FLHTCUTGSE)

Installation:

1. Remove the both taillights on the rear fenders so that you have access to the taillight baseplate where the connections are located. This is done by removing the 2 screws on either side of the tail light. Unplug both taillights at the connector and remove to prevent damage during installation.
2. Clean the mounting area at the bottom of both fenders with denatured alcohol, allow to dry.
3. Test fit the Low Profile Fender Lights. The Fender Lights should mount in the center of the fender with the bottom alignment tab against the bottom edge of the fender.



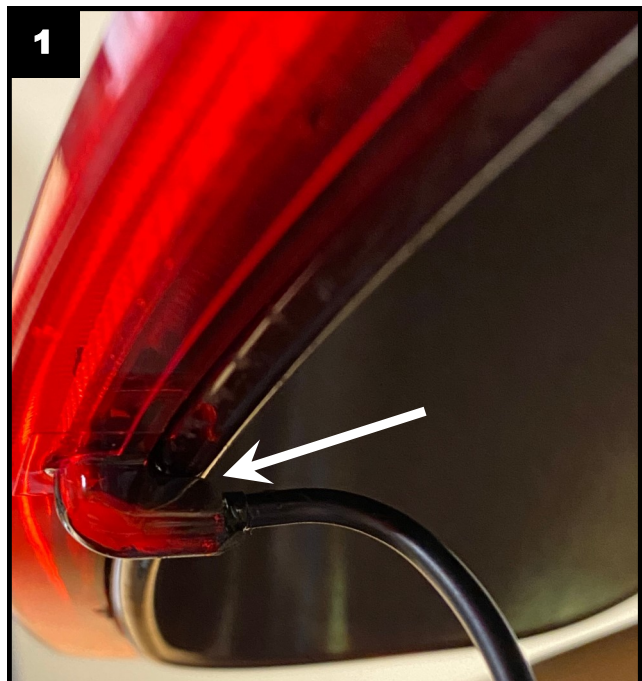
Please read all Information below before Installation

Warning: Disconnect negative battery cable from battery; refer to owner's manual. Failure to do so may result in electrical shock, injury, or fire. Secure negative battery cable away from positive side of battery and all other positive voltage sources on vehicle.

Safety First: Always wear appropriate safety gear including safety glasses when performing any electrical work. It is highly recommended that safety glasses be worn throughout this installation process. Be sure vehicle is on level surface, secure and cool.

Important: This product is designed and intended for use as auxiliary lighting only. It is NOT intended to replace any original equipment lighting installed on the vehicle and should not be used for that purpose. This product must be wired so that it does not interfere with any original equipment lighting.

Important: Ambient install temperature must be 60 degrees F or higher. Allow 24 hours for tape to cure before washing or prolonged use of vehicle.

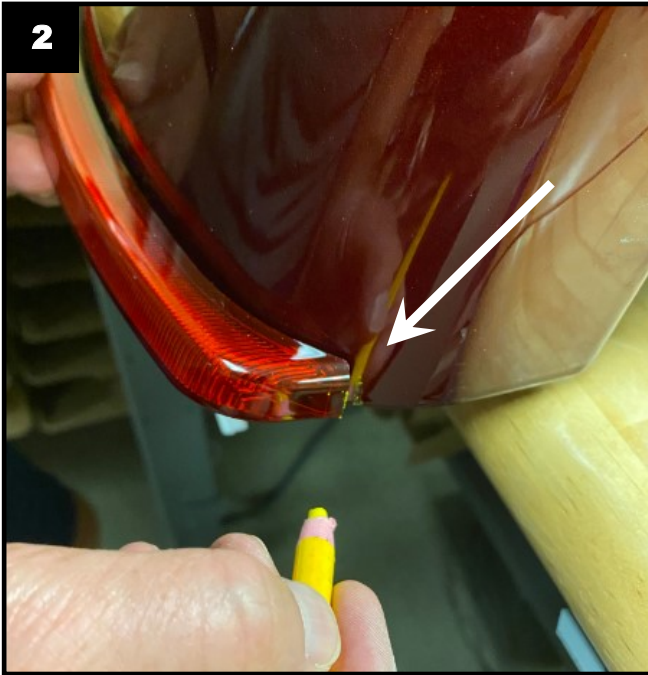


Questions? Call us at: 1 (800) 382-1388 M-TH 8:30AM-5:30PM / FR 9:30AM-5:30PM EST

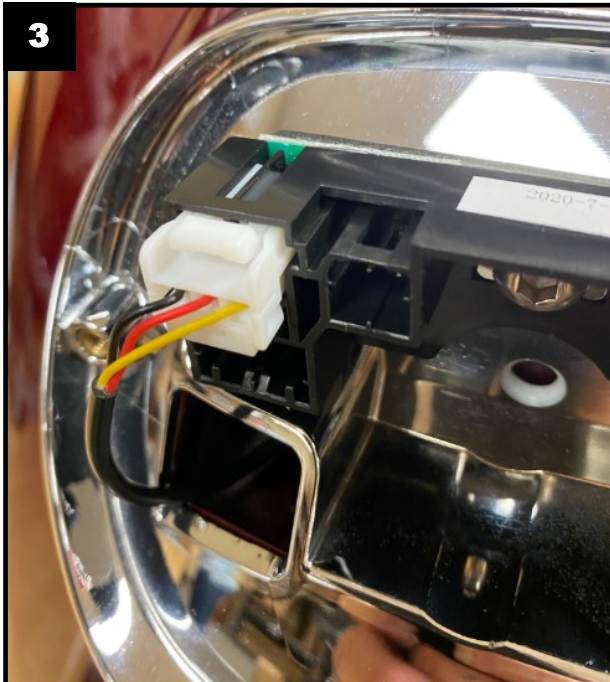
Installation Instructions - Page 2.

Installation Continued:

- Using a grease pencil, mark the edges of the Fender Light on the fender. Refer to Photo 2.

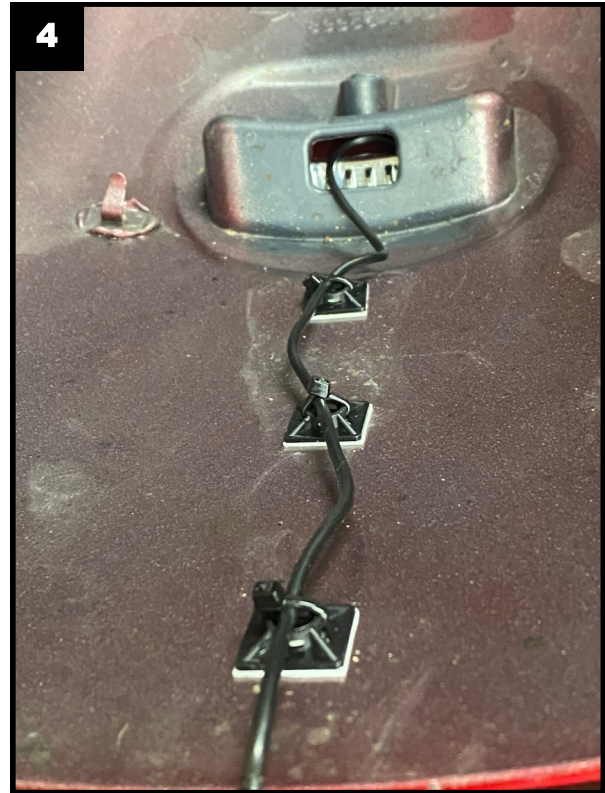


- Remove the red adhesive backing and install the lights on both fenders. Press into place making sure the adhesive tape is making contact with the fender.
- Route the Fender Light wiring harness into the back of the taillight baseplate and plug the 3 pin connector into the upper left port on the taillight base as shown in Picture 3.



Installation Continued:

- Using the provided cable tie holders, secure both Fender Light wiring harnesses on the inside of the fenders to prevent them from coming in contact with the tire. Select locations for cable tie holders. Clean area with denatured alcohol, allow to dry. Remove paper backing for cable tie holders and press into place. Refer to Photo 4.



- Re-attach the brake light assembly by plugging in the connector to the taillight base, then re-installing on the taillight base with the 2 screws. Be careful to not over tighten screws or lens may crack.
- Perform a BCM sync by turning the ignition on, turn the 4 way hazards on, turn the ignition off. Allow the 4 way hazards to run for 3-4 minutes. Turn the ignition on. Turn the 4 way hazards off. Turn the ignition off.
- Once everything is back together, test operation of your rear running and brake lights.