



Custom Dynamics® ProBEAM®  
Rear Tour-Pak® Light  
Installation Instructions

We thank you for purchasing the Custom Dynamics® ProBEAM® Rear Tour-Pak® Light! Our LEDs offer maintenance free service and higher visibility. Our ProBEAM® product line utilizes the latest technology and automotive grade components to ensure the highest level of reliable service. Custom Dynamics® offers one of the best warranty programs and customer support in the industry. If you have any questions during the installation of this product please call us at 1(800) 382-1388.

Part Number: PB-TP-RED PB-TP-SMOKE

**Package Contents:**

- ProBEAM® Rear Tour-Pak Light (1)
- Mounting Screws (4)
- Antenna Adapter (2)
- CB Cable Stud, nut & washer (1)



**Fitment:** 2014-2022 Harley-Davidson® models equipped with OEM King Tour-Pak. Compatible with both AM/FM antenna & CB antenna. Also works on models with hidden antenna.

China Patent: ZL201930506416.4

US Patent Pending

**Installation:**

1. Secure motorcycle on level surface. Remove the seat and disconnect negative battery cable from the battery.
2. Remove all contents from the Tour-Pak® and support lid open to access the lid tether anchor.
3. Remove the 2 screws holding the lid tether anchor to the lower Tour-Pak®. See Photo 1.



4. Remove the Tour-Pak® liner
5. Reinstall the Tour-Pak® tether anchor to the lower Tour-Pak®.
6. If installed, remove the Radio and CB antennas from the rear Tour-Pak® light housing.
7. Disconnect the rear Tour-Pak® lighting harness connector from the rear Tour-Pak® light housing.
8. If installed, disconnect the Radio and CB antenna cable connectors. See Photo 2.



**ATTENTION**

Please read all Information below before Installation

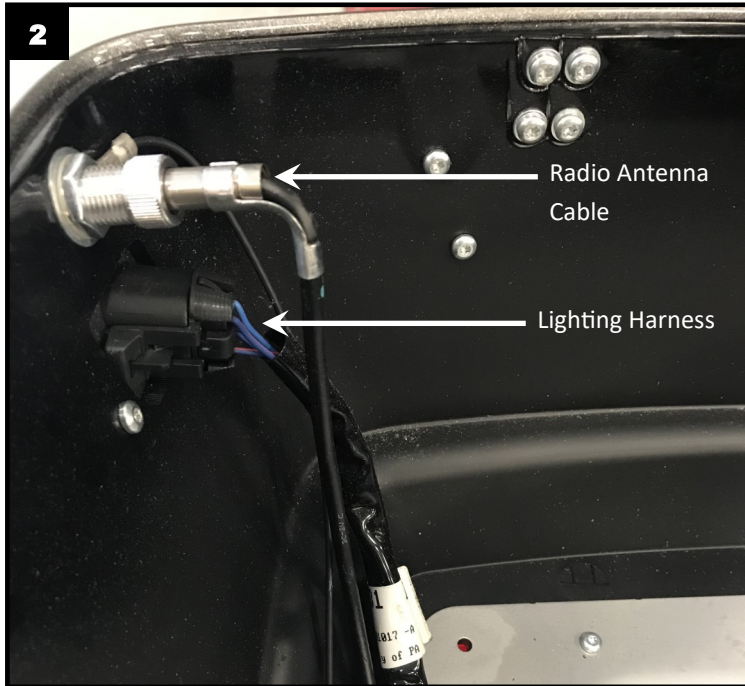
**Warning:** Disconnect negative battery cable from battery; refer to owner's manual. Failure to do so may result in electrical shock, injury, or fire. Secure negative battery cable away from positive side of battery and all other positive voltage sources on vehicle.

**Safety First:** Always wear appropriate safety gear including safety glasses when performing any electrical work. It is highly recommended that safety glasses be worn throughout this installation process. Be sure vehicle is on level surface, secure and cool.

Questions? Call us at: 1 (800) 382-1388 M-TH 8:30AM-5:30PM / FR 9:30AM-5:30PM EST

## Installation Instructions - Page 2

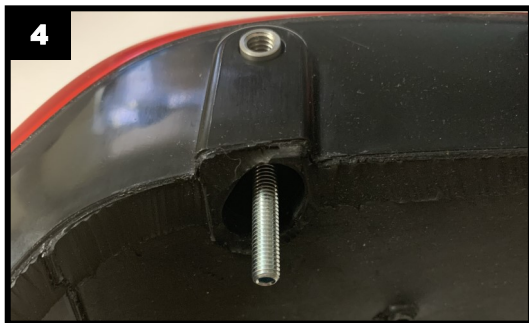
### Installation Continued:



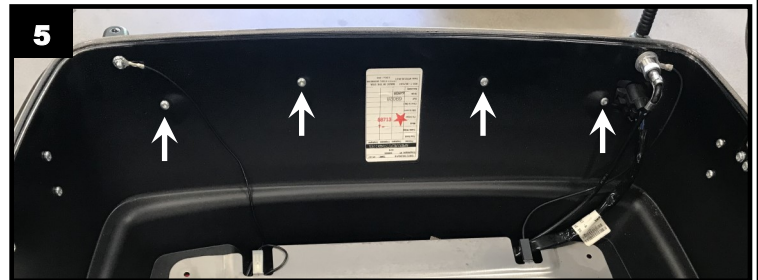
9. If installed, remove Radio and CB cable studs from the rear Tour-Pak® light housing. Save hardware for reassembly.
10. Remove the 8 OEM mounting screws that secure the rear Tour-Pak® light to the Tour-Pak® and set aside. Only 4 of the OEM screws will be reused (Step 18) for the installation of the new ProBEAM® Rear Tour-Pak® light. See Photo 3.



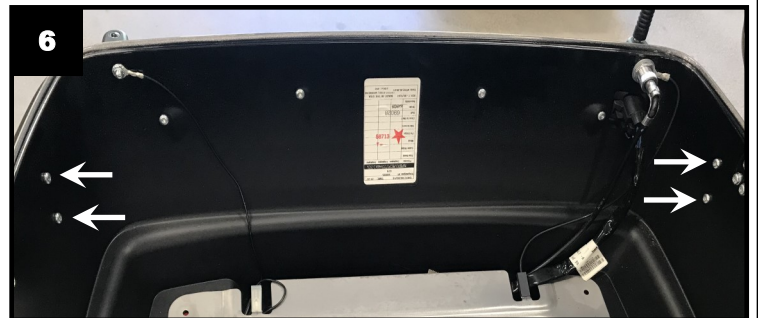
11. Reinstall the OEM Radio stud on the ProBEAM® Tour-Pak® Light.
12. Install the provided CB cable stud on the ProBEAM® Tour-Pak® Light. See Photo 4.



13. Carefully align the ProBEAM® Rear Tour Pak® Light to the Tour Pak® passing through the OEM radio stud and the CB cable stud.
14. Install the original OEM Radio Stud nut removed in Step 9, without tightening.
15. Install the provided nut and washer onto the CB stud without tightening.
16. Gradually tighten both the Radio and CB nuts going back and forth between the two evenly to secure the ProBEAM® Rear Tour Pak® Light to the Tour Pak®.
17. Using the 4 provided mounting screws, fasten the new ProBEAM® Rear Tour-Pak® light on the Tour-Pak®. Install the 4 provided mounting screws in the 4 rear facing mounting holes. See Photo 5. **Important: Do NOT use OEM screws for this step.**



18. Install 4 of the OEM mounting screws removed in Step 10 in the 4 side facing mounting holes. See Photo 6.



19. If equipped, Reconnect the Radio and CB antenna cable connectors to ProBEAM® Rear Tour-Pak® light.
20. Connect the rear Tour-Pak® lighting harness connector to the ProBEAM® Rear Tour-Pak® light.
21. Using the provided antenna adapters, remove the antenna caps from the ProBEAM® Tour-Pak® light and reinstall the Radio and CB antennas, if equipped, to the rear Tour-Pak® light housing.
22. Reinstall the Tour-Pak® liner inside the Tour-Pak®
23. Reconnect the negative battery cable to the battery.
24. Check Radio and CB, if equipped, for proper operation. Check all lighting from proper operation before riding.