



Custom Dynamics® ProGLOW™ Speaker Light Installation Instructions

We thank you for purchasing the Custom Dynamics® ProGLOW™ Speaker Light. Our products utilize the latest technology and high quality components to ensure you the most reliable service. We offer one of the best warranty programs in the industry and we back our products with excellent customer support, if you have questions before or during installation of this product please call Custom Dynamics® at 1(800) 382-1388.

Part Numbers: PG-SPEAKER-R-1

Package Contents:

- ProGLOW™ Speaker Light (2)
- 8" Tie Wrap (10)
- Y Adapter Harness (1)

Fits: 2014-2022 Harley-Davidson® Street Glide, Street Glide Special, CVO Street Glide, Road Glide, Road Glide Special, Road Glide Ultra, Road Glide Limited, Electra Glide Ultra Classic, Electra Glide Ultra Classic Low, Ultra Limited, Ultra Limited Low, CVO™ Limited, Electra Glide Standard, Tri Glide Ultra, 2015-2020 CVO™ Street Glide, 2015-2016 CVO™ Road Glide Ultra, 2018-2020 CVO™ Road Glide and 2020-2021 CVO™ Tri Glide equipped with Harley-Davidson® Boom!™ Audio 6.5" Stage II Tour Pak, TriGlide Body & Non Twin Cooled Lower Fairing Speakers.

Does not fit 2021 FLHXSE, FLTRXSE and models equipped with Audio Power by Rockford Fosgate.

Note: Requires ProGLOW™ Bluetooth Controller (Sold Separately).



Tour-Pak Installation:

1. Refer to the factory service manual and remove the Left and Right speakers from the Tour-Pak® speaker pod enclosures.
2. From the backside of the speakers remove the 3 screws that mount the speaker grill and Tweeter Bridge to the speaker. Two of the screws are visible and one is hidden behind the foam. Refer to Photo #1 (Left Side) and Photo #2 (Right Side) for the hidden screw locations. You will need to cut a small X in the foam to remove the hidden screw.
3. With the Tweeter Bridge fully exposed, clean the backside of the Tweeter Bridge with denatured alcohol to remove all oil, wax or residue.
4. Remove the red protective tape from the Speaker Light and install the Speaker Light on the backside of the Tweeter Bridge. The wiring harness should exit the top and follow the OEM speaker harness as shown in Photo #3. It is not necessary to remove the Tweeter bridge from the Speaker Grill.
5. Reassemble the Tweeter Bridge and the Speaker using the 3 screws removed in Step 2.
6. Remove the existing grommet from both speaker pods. Refer to Photo #4. Carefully cut a slit in the existing grommets to remove it from the left and right OEM speaker harnesses.
7. Route the male connectors of the supplied Y harness through the wire harness hole in both speaker pods and reinstall the OEM grommet around the OEM harness and the Y harness.



ATTENTION

Please read all Information below before Installation

Warning: Disconnect negative battery cable from battery; refer to owner's manual. Failure to do so may result in electrical shock, injury, or fire. Secure negative battery cable away from positive side of battery and all other positive voltage sources on vehicle.

Safety First: Always wear appropriate safety gear including safety glasses when performing any electrical work. It is highly recommended that safety glasses be worn throughout this installation process. Be sure vehicle is on level surface, secure and cool.

Important: This product is designed and intended for use as auxiliary lighting only. It is NOT intended to replace any original equipment lighting installed on the vehicle and should not be used for that purpose. This product must be wired so that it does not interfere with any original equipment lighting.

Important: Ambient install temperature must be 60 degrees F or higher. Allow 24 hours for tape to cure before washing or prolonged use of vehicle.

Important: Make all wiring connections with the power OFF to prevent damage to the ProGLOW™ Speaker Lights and/or the ProGLOW™ Bluetooth Controller.

Questions? Call us at: 1 (800) 382-1388 M-TH 8:30AM-5:30PM / FR 9:30AM-5:30PM EST

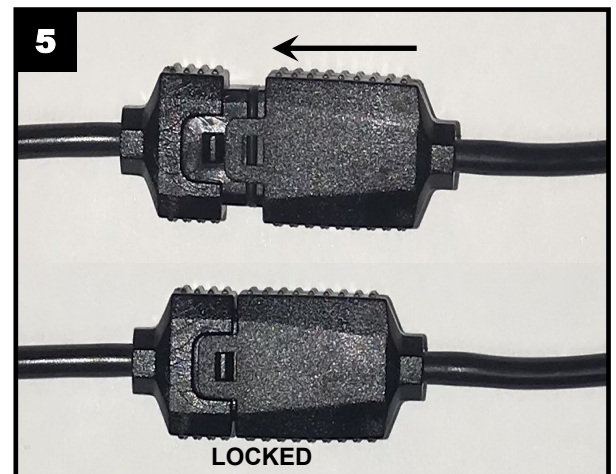
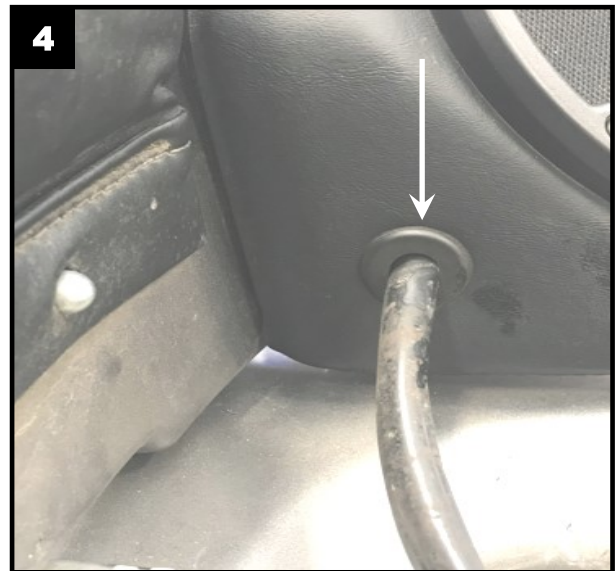
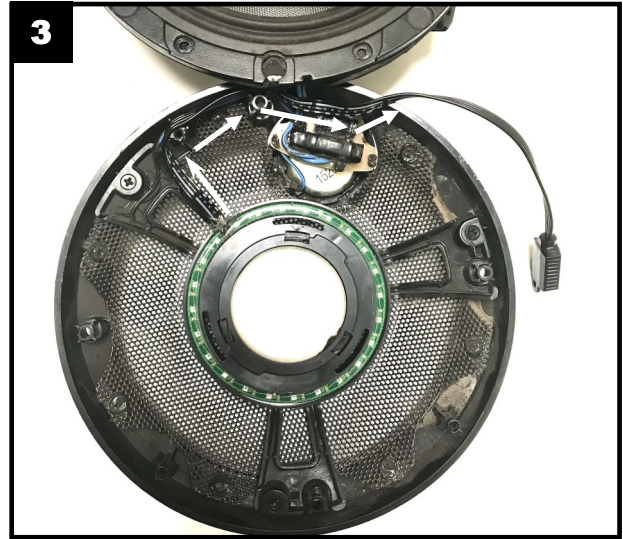
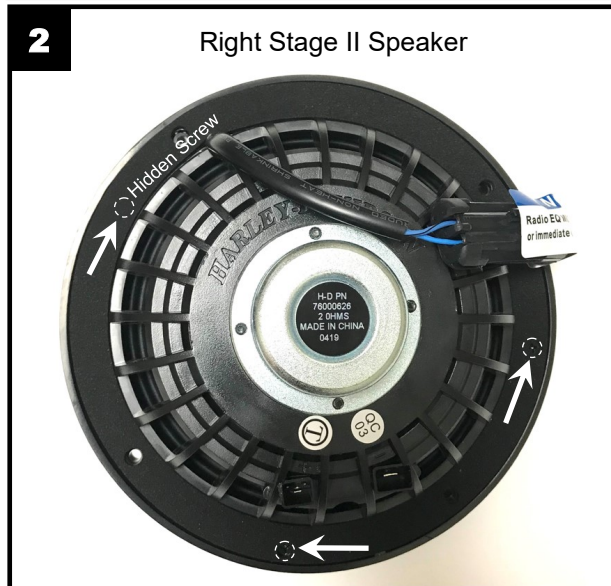
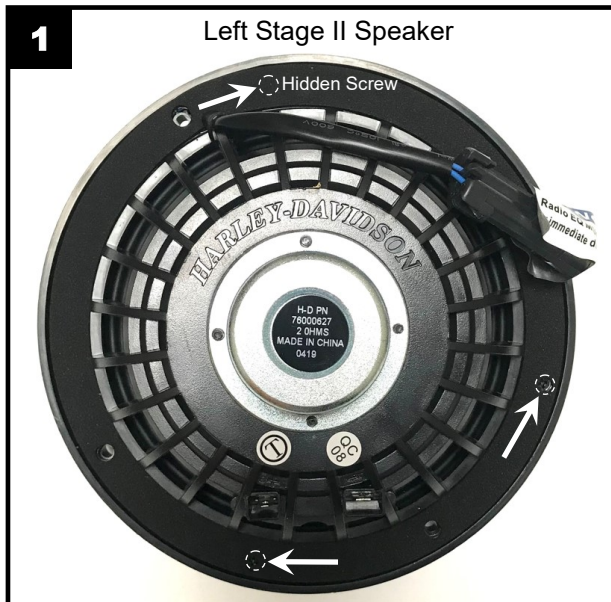
Installation Instructions - Page 2.

Tour-Pak Installation continued:

8. Connect the Y harness male connectors to each speaker light and OEM speaker harness to the speaker. Reinstall the speakers in the speaker pods.

CAUTION: When connecting the mating ProGLOW™ Speaker Light connectors, confirm the mating connector is connected correctly or damage will occur to the lighting accessories. The locking tab should slide onto the lock and lock into position. See Photo #5.

9. Once wiring has been completed, secure wires with tie wraps.
10. Power the ProGLOW™ Bluetooth Controller (Sold Separately) OFF and connect the Speaker Light to one of the controller channels.
11. Power up the ProGLOW™ Bluetooth Controller (Sold Separately) and test the Speaker Lights for proper operation.



Installation Instructions - Page 3.

Lower Fairing Installation:

1. Refer to the factory service manual and remove the Left and Right speakers from the lower fairings.
2. Remove the lower fairing cap.
3. From the backside of the speakers remove the 3 screws that mount the speaker grill and Tweeter Bridge to the speaker. Two of the screws are visible and one is hidden behind the foam. Refer to Photo #1 (Left Side) and Photo #2 (Right Side) for the hidden screw locations. You will need to cut a small X in the foam to remove the hidden screw.
4. With the Tweeter Bridge fully exposed, clean the backside of the Tweeter Bridge with denatured alcohol to remove all oil, wax or residue.
5. Remove the red protective tape from the Speaker Light and install the Speaker Light on the backside of the Tweeter Bridge. The wiring harness should exit the top and follow the OEM speaker harness as shown in Photo #3. It is not necessary to remove the Tweeter bridge from the Speaker Grill.
6. Reassemble the Tweeter Bridge and the Speaker using the 3 screws removed in Step 3.
7. Remove the existing speaker wire grommet from both lower fairings.
8. Route the male connectors of the supplied Y harness through the existing speaker wire harness hole in both lower fairings and reinstall the OEM grommet around the OEM harness and the Y harness.
8. Connect the Y harness male connectors to each speaker light and the OEM speaker harness to both speakers. Reinstall the speakers in the lower fairings.

CAUTION: When connecting the mating ProGLOW™ Speaker Light connectors, confirm the mating connector is connected correctly or damage will occur to the lighting accessories. The locking tab should slide onto the lock and lock into position. See Photo #5.

9. Once wiring has been completed, secure wires with tie wraps.
10. Reinstall the lower fairing cap.
11. Power the ProGLOW™ Bluetooth Controller (Sold Separately) OFF and connect the Speaker Light to one of the controller channels.
12. Power up the ProGLOW™ Bluetooth Controller (Sold Separately) and test the Speaker Lights for proper operation.

Questions? Call us at: 1 (800) 382-1388 M-TH 8:30AM-5:30PM / FR 9:30AM-5:30PM EST

Typical Wiring Diagram

