



Custom Dynamics® Indian® LED License Plate Frame Installation Instructions

We thank you for purchasing the Custom Dynamics® Indian® LED License Plate Frame. Our products utilize the latest technology and high quality components to ensure you the most reliable service. We offer one of the best warranty programs in the industry and we back our products with excellent customer support, if you have questions before or during installation of this product please call Custom Dynamics® at 1(800) 382-1388.

Part Numbers: CD-LP-IND-B
CD-LP-IND-C

Package Contents:

- License Plate Frame with Mount (1)
- Washers (2)
- Plate Frame Screws (4)
- 8" Wire Tie (4)

Fits: 2015-2022 Indian® Roadmaster, 2018 Roadmaster Classic, 2020-2021 Roadmaster Elite, 2016-2022 Springfield, 2018-2019 Springfield Dark Horse, 2015-2019 Chief, Chief Classic, Chief Dark Horse, 2015-2020 Chief Vintage, 2021 Vintage, 2015-2018 Chieftain, Chieftain Dark Horse and 2018-2020 Chieftain Classic.



ATTENTION

Please read all Information below before Installation

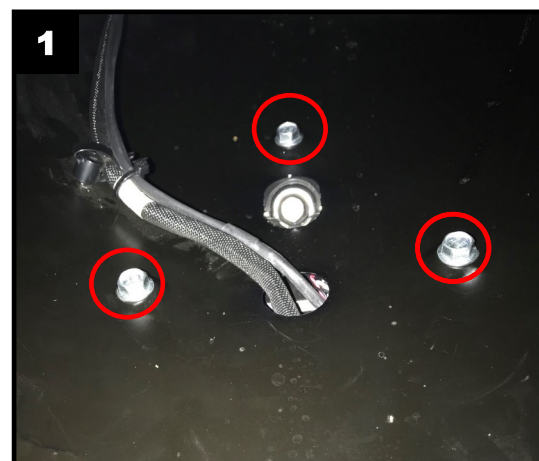
Warning: Disconnect negative battery cable from battery; refer to owner's manual. Failure to do so may result in electrical shock, injury, or fire. Secure negative battery cable away from positive side of battery and all other positive voltage sources on vehicle.

Safety First: Always wear appropriate safety gear including safety glasses when performing any electrical work. It is highly recommended that safety glasses be worn throughout this installation process. Be sure vehicle is on level surface, secure and cool.

Important: This product is designed and intended for use as auxiliary lighting only. It is NOT intended to replace any original equipment lighting installed on the vehicle and should not be used for that purpose. This product must be wired so that it does not interfere with any original equipment lighting.

Installation:

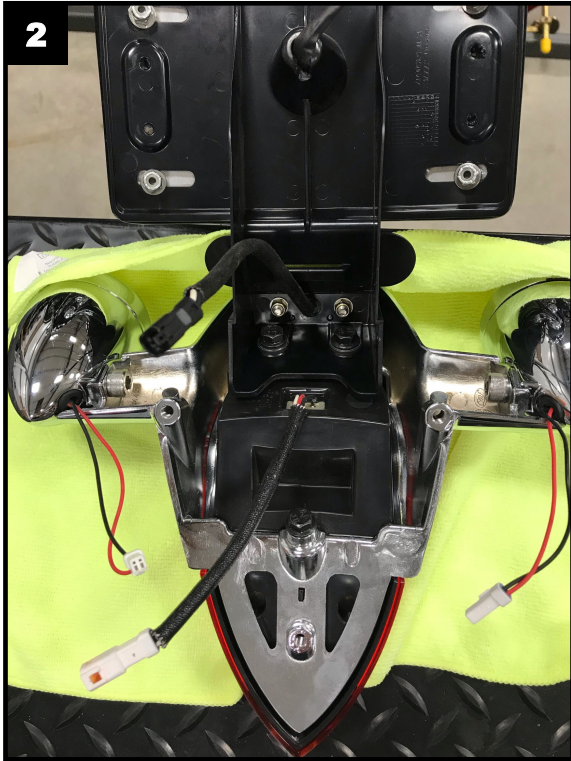
1. Remove motorcycle seat and disconnect the negative battery cable from the battery. Consult your owners manual if unsure of this process.
2. Remove the 3 bolts securing the taillight assembly to the rear fender as shown in Picture 1.



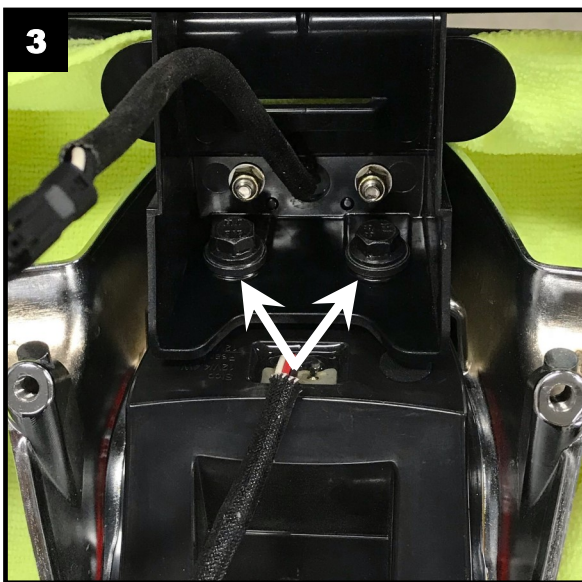
Questions? Call us at: 1 (800) 382-1388 M-TH 8:30AM-5:30PM / FR 9:30AM-5:30PM EST

Installation Instructions - Page 2.

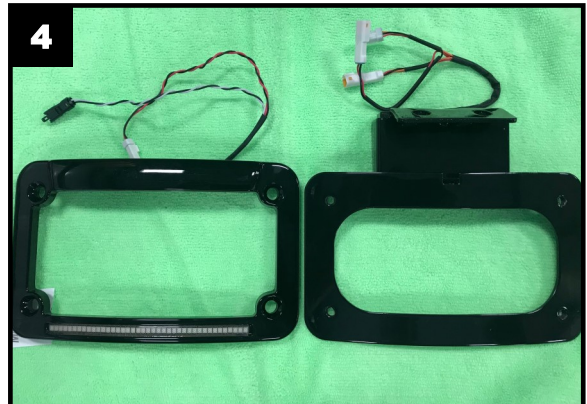
3. Disconnect the 4 Taillight assembly electrical connections and lay the Taillight assembly facedown on a scratch free surface as shown in Picture 2.



4. Remove the 2 bolts and spacers securing the stock license plate mount to the taillight housing. Retain the bolts and spacers as they will be used for reassembly. Refer to Picture 3.



5. Separate the plate frame from the mounting bracket as shown in Picture 4.



6. Shape the radius of the license plate to match the radius of the plate frame. Trim the License Plate as necessary to prevent the License Plate Frame wires from getting cut, pinched or frayed. Refer to Picture 5.



7. Route the wires of the license plate frame through the hole in the mounting bracket as shown in Picture 6. Using the 4 provided license plate frame screws, install the license plate and frame onto the mounting bracket.

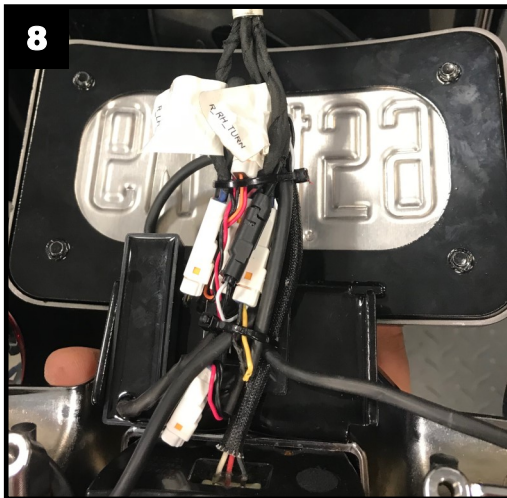


Installation Instructions - Page 3.

8. Install the mounting bolts with spacers (Removed in Step 4) and the provided washers into the mounting bracket as shown in Picture 7.



9. Install the mounting bracket, with license plate frame installed, onto the taillight housing.
10. Reconnect the 4 Taillight assembly electrical connections and secure the wires to the back of the assembly as shown in Picture 8.



11. Remount the taillight assembly to the rear fender.
12. Test the operation of all lighting before riding.