



## Custom Dynamics® LED Turn Signal Clusters Installation Instructions

We thank you for purchasing the Custom Dynamics® LED turn signals! Our products utilize the latest technology and high quality components to ensure you the most reliable service. We offer one of the best warranty programs in the industry and we back our products with excellent customer support, if you have questions before or during installation of this product please call Custom Dynamics® at 1(800) 382-1388.

**Part Numbers:** GEN-200-R-JAE

### **Package Contents:**

- LED Clusters (1 pair)
- Instructions

**Fitment:** 2016-2017 Harley Davidson® CVO Pro Street Breakout Rear Turn Signals.

(Fits US Models Only)



## ATTENTION



Please read all information below before installation

**Important:** This product requires the reuse of the OEM gasket for proper fitment. Make sure to remove the gasket from the stock LED assembly before discarding.

**Note:** Use care in removing the stock LED bulbs from the housing, so as not to scratch or mar the chrome housing. Custom Dynamics® is not liable for damage to chrome during installation.

**Important:** This LED product is BCM compliant. It is recommended to run the 4 way hazard flashers for 3 minutes to allow the CanBus system to sync to the new load. See #11 in instructions for process.

**Note:** No load equalizer or Signal Stabilizer™ is needed for this product.

### Installation

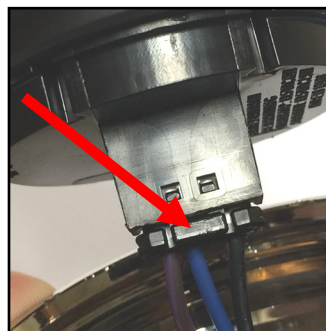
1. Remove the lens by inserting flat-blade screw driver in lens slot and gently twisting.
2. Remove stock LED unit, apply light prying motions with screw driver or similar object around the perimeter of the light. Its easier if you can get in behind the gasket while doing this, but as not to harm the gasket, it will be re-used for the new cluster installation. Once enough of the light is out of the housing, pull it free, take care as the wiring is still attached.
3. Locate the tab on the end of the wire connector, push in and disconnect the connector from the stock LED unit.
4. Remove the black gasket from around the stock LED unit. Discard the LED and Keep the gasket for the next steps.



Remove Lens at the slot



Gently pry around the perimeter



Push Connector Tab and pull bulb off the connector



Remove the black gasket from around the stock LED assembly

Questions? Call us at: 1 (800) 382-1388 M-TH 8:30AM-5:30PM / FR 9:30AM-5:30PM EST

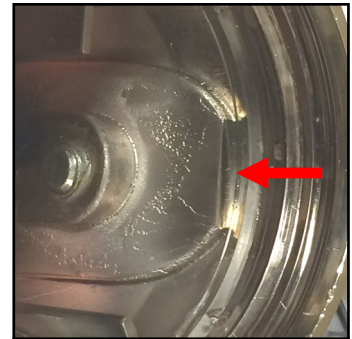
## Installation Instructions - Page 2

### Installation-Continued

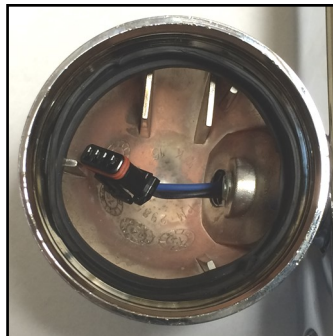
5. Note that on the gasket that there is a notch cutout on the bottom, there is a matching flat spot in the metal inside the housing close to the bolt. See photos right.
6. Install the gasket into the housing, making sure that the cutout mates up with the flat edge of the housing as shown. Make sure that it fits in the grooves around the edges and lays against the housing tabs.
7. Plug Replacement LED clusters into connector making sure they snap together.
8. Twist the Cluster a few revolutions to coil wiring.
9. Lay the cluster in the housing against the gasket, Make sure the cluster is level.
10. Install the lens with the notch facing downward, make sure it snaps in completely. The tabs on the lens will push the cluster snug against the gasket.
11. Perform the LED Sync process:
  - Turn Ignition Power ON (do not start bike)
  - Turn 4 way Hazard flashers ON
  - Turn ignition power OFF
  - Let Hazard Flashers run for 3 minutes
  - Turn ignition power back ON
  - Turn 4 way Hazard Flashers OFF
12. Test Function of turn signals.



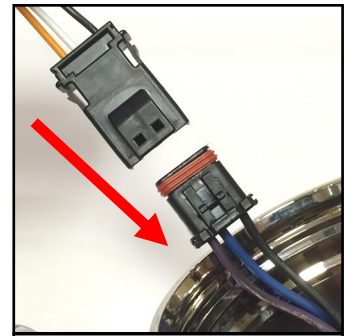
Gasket Cut out



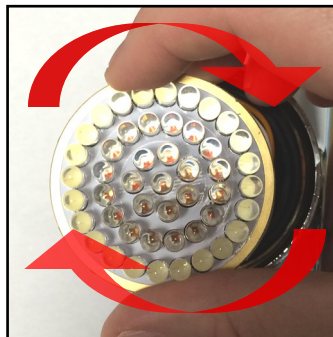
Housing flat edge



Gasket Installed



Plug cluster in to connector



Twist the cluster to coil wire



Install cluster



Install Lens Notch facing ground

