



## Custom Dynamics® FT Road King® Install Kit Installation Instructions

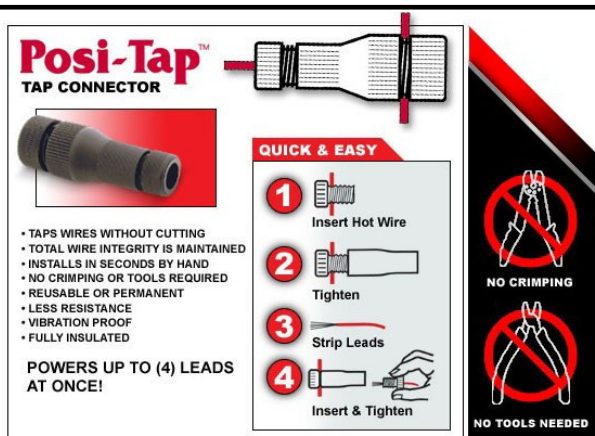
We thank you for purchasing the Custom Dynamics® Road King® Install kit for front fender tip! Our products utilize the latest technology and high quality components to ensure you the most reliable service. We offer one of the best warranty programs in the industry and we back our products with excellent customer support, if you have questions before or during installation of this product please call Custom Dynamics® at 1(800) 382-1388.

**Part Number: RKINSTALL**

### Package Contents:

- Extension Cable (1)
- 3M Promoter Ampule (1)
- Tie-Wrap Base (2)
- 8" Tie-Wraps (2)
- 4" Tie-Wraps (10)
- Posi-Tap™ Connectors (2)

Fits: Harley-Davidson® 2014-2018 Road King® Standard and 2017-2018 Ultra Classic®

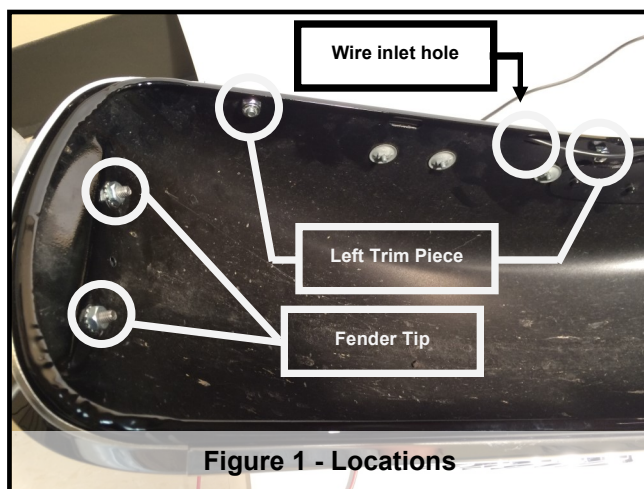


### Installation:

1. Remove negative [ - ] battery terminal from battery.
2. Remove the front fender by removing the 4 bolts from the fender mounting brackets.
3. Remove the left side chrome trim piece to allow routing of the wire. The nuts are located on the inside of the fender. Save all parts for re-installation later. (See Figure 1)
4. Remove the stock fender tip assembly by removing the nuts on the inside of the fender. Discard. (See Figure 1)
5. Remove the front headlight bulb from the bucket to allow access to wiring for new fender tip.
6. On the new fender tip wiring, slide 1 piece of shrink tubing (from fender tip kit) up to the base of the wiring, over the connectors.
7. On the extension cable, slide 1 piece of shrink tubing (from fender tip kit) over the ends.



Note: Please do not use the instructions that came with the fender tip, use the installation guide here to properly install on 2014-18 Road King® Standard and 2017-2018 Ultra Classic®.



**Figure 1 - Locations**

8. Attach the extension cable to the connectors on the fender tip. The Posi-Lock™ connectors twist open, insert wire then twist closed. Make sure Black goes to black and the colored wire goes to red (or colored wire).
9. Once connections are made, slide both pieces of shrink tubing down over the connectors and using a heat gun or similar heat source, shrink the tubing down over the connections.

**Questions? Call us at: 1 (800) 382-1388 M-TH 8:30AM-5:30PM / FR 9:30AM-5:30PM EST**

## Installation Instructions - Page 2

10. Install GEN-FT fender tip to the front of the fender with the provided hardware. Note: DO NOT use the nuts from the original fender tip, use the ones provided. Make sure the wiring/connectors tucks to left side arm and that nothing is pinched. (See Figure 2)

11. Guide extension cable along the outside of the fender, then through the second hole cut out. (See figure 1 for hole location). Once wiring is through hole, re-install the outside trim piece.

12. Using the photo in figure 3 as a guide, decide where to mount the included tie-wrap bases. Before mounting, clean the surface, then apply the 3M Promoter from the ampule provided to the area bases will go. Allow the promoter 4-5 minutes to dry. (See Figure 3)

13. Attach the bases, then secure the wiring in place using the provided 8" tie-wraps. (See Figure 3)

14. Re-install the front fender to the bike.

15. Check the clearance of the wiring with tire. Make sure there will be no contact issues.

16. Guide the extension cable out of the fender and up along the brake line, using the provided 4" tie-wraps to attach where needed.

17. Bring wire into the rear of the headlight bucket. Using a test light to confirm, determine the ground (typically black) and constant running power (typically blue) wires on the bike.

18. Trim the extension cable as needed then strip wires back and install the provided Posi-Tap™ connectors. The red side of the connector installed on the extension cable.

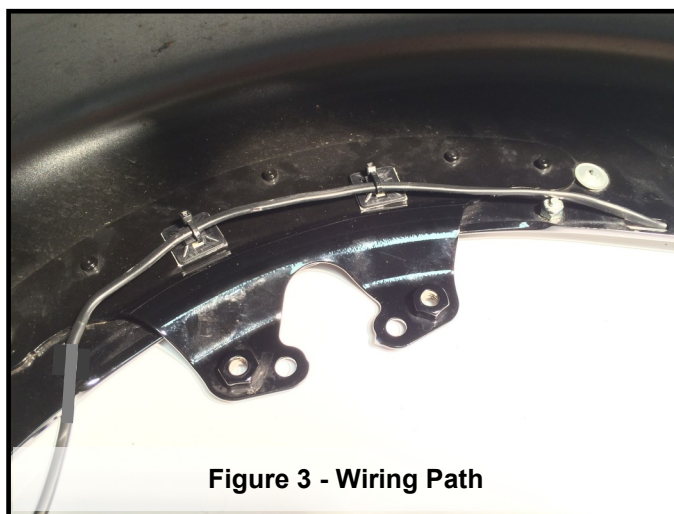
19. Using the gray side of the Posi-Tap™ connectors, tap the Negative [ - ] wire from the fender tip extension cable to your confirmed Negative ground [ - ] wire, and the positive [ + ] wire from the fender tip extension cable to your confirmed running light wire. For instructions on using the Posi-Tap™ connectors, see picture on page one.

20. Once connections are made, test function of fender tip light. Re-connect the negative [ - ] battery terminal to the battery. Turn bike power on and test. This unit gives you a constant on LED running light.

21. Once tested, reinstall headlight.



**Figure 2 - Fender Tip Wire Direction**



**Figure 3 - Wiring Path**