

INSTALLATION INSTRUCTIONS

DRAG SPECIALTIES BOBTAIL LUGGAGE RACK P/N 1510-0092

ATTENTION INSTALLER (if other than owner): Please forward this Instruction Sheet to the purchaser of this product. These instructions contain valuable information necessary to the end user.

INTRODUCTION: These instructions describe the procedure for properly installing the Bobtail luggage rack on the 2006-2008 FXST models.

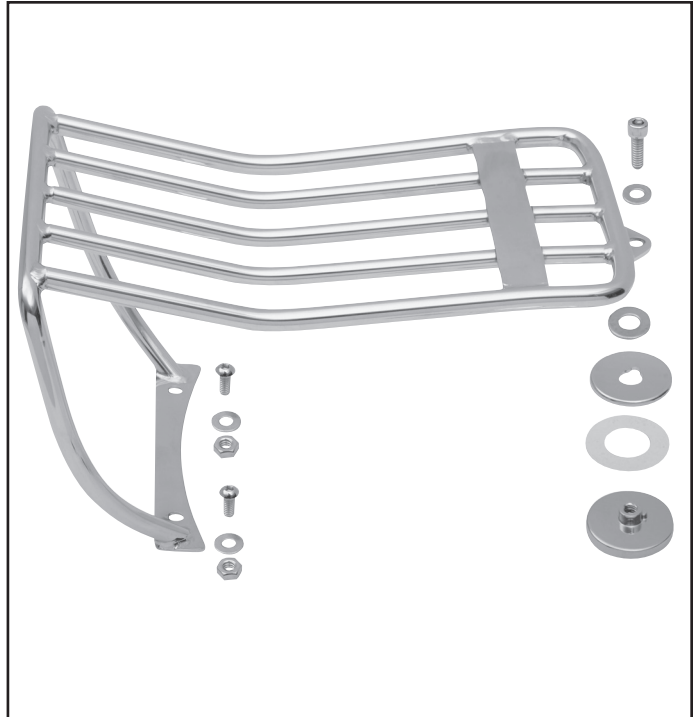
Review the instructions carefully before beginning, as they contain important information. Please retain for future reference.

Particularly important information is distinguished in these instructions by the following notations.

NOTE: A NOTE provides key information to make procedures easier or clearer.

CAUTION: A CAUTION indicates special procedures that must be followed to avoid damage to the motorcycle and/or accessories.

WARNING! A WARNING indicates special procedures that must be followed to avoid injury to a motorcycle operator or person inspecting or repairing the motorcycle.



TOOLS REQUIRED:

#2 Phillips-style screwdriver
5/32" and 3/16" hex key
5/32" drill bit, pilot bit, and drill motor
7/16" combination wrench
Torque wrench

1. Remove the seat from the bike. If the seat has the rear bracket style that features a captured screw, you must replace the bracket with either OEM seat bracket mounting kit 52030-98, Drag Specialties seat bracket DS-490015 or something similar.

NOTE: The bracket must have the large hole so it will fit over the seat retention nut.

CAUTION: Place a blanket, towel or masking tape over the rear fender during installation to prevent any damage to the painted surfaces.

2. Remove the stock seat retention nut and clip from the rear fender and set it aside. It will not be reused.

NOTE: If the bike features a solo seat, remove the plastic plug from the fender in the rear mounting hole location.

3. Remove the taillight lens and bulb and set aside.
4. Set the rack into position, so that the front tab is centered over the seat mounting nut hole, and the rear mount sits on the lip on the license plate mount.
5. Center the rack on the license plate mount, taking care to make sure the rack is centered on the fender from side to side.

6. Mark the two holes in the rack rear mounting plate onto the license plate mount.
7. Remove the luggage rack from the bike.
8. Drill pilot holes in the center of the two marks that you made in step 7.

NOTE: You may find it easier to drill the pilot holes if you loosen and drop the taillight/license plate bracket from under the fender. Please see the OEM service manual for details on removing the license plate bracket.

9. From the underside, drill out the two pilot holes to 5/16" diameter.
10. Remove the rack from the rear fender and set aside.
11. Remove the clear plastic protective tape (item #5) from the white square and install it on top of the fender, centering it on the rear seat mounting hole.
12. Insert the rear seat retainer (item #6) from the rear and underside of the fender; then install the thick spacer (item #4) on the top of the fender. Make sure the tab on the seat retainer fits into the notch in the fender hole, and the thick spacer also fits onto the tab on the seat retainer.

NOTE: One side of the thick spacer is contoured to match the rear fender. Place this side of the spacer towards the fender.

13. While holding the seat retainer nut in place, install the seat and place the seat mounting bracket over the seat retainer.

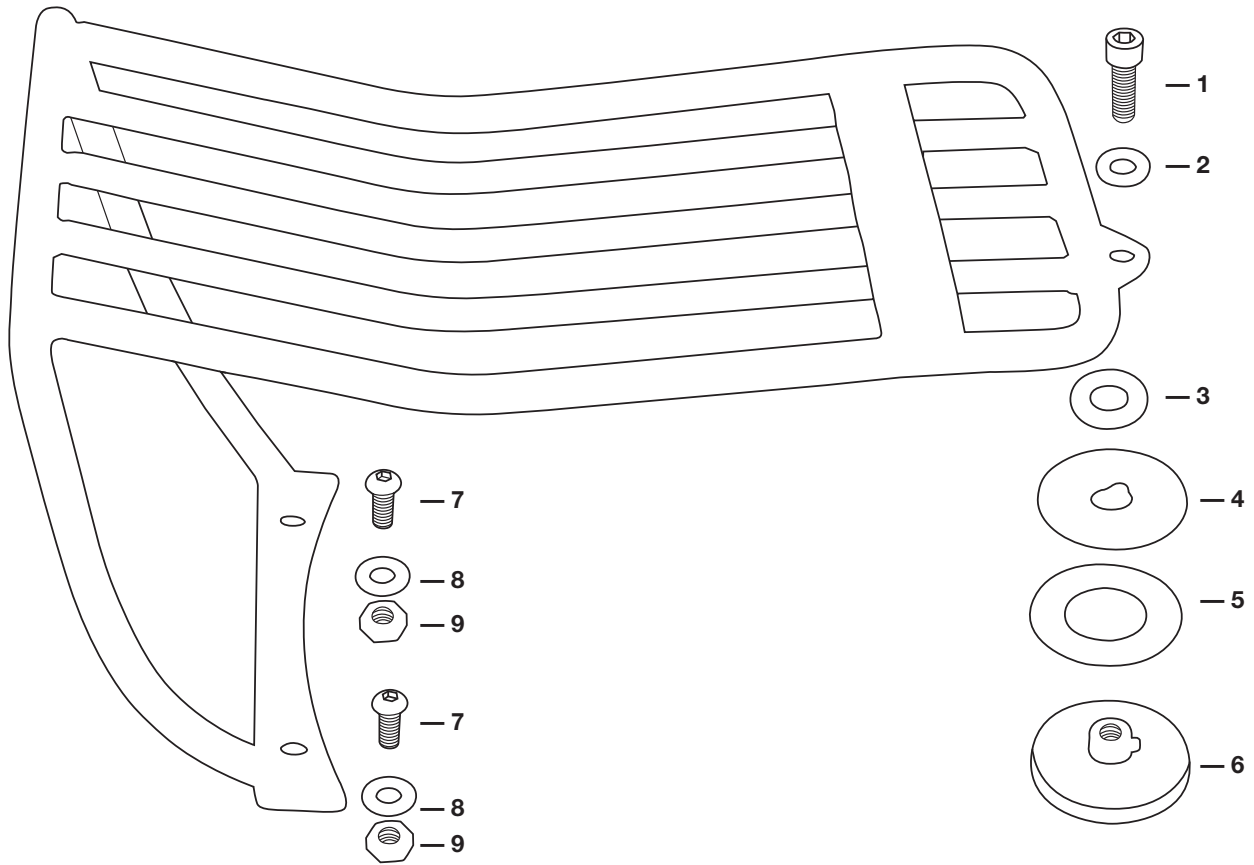
NOTE: If you are using a solo-style seat and it does not mount to the rear seat retainer nut, place the large washer (item #3) over the seat retainer nut to take up the space reserved for the rear seat mounting bracket. This spacer washer (item #3) is not used if the two-up seat mounting bracket is used.

DRAG SPECIALTIES

3501 Kennedy Rd, PO Box 5222, Janesville, WI 53547-5222
P/N 1510-0092

INSTALLATION INSTRUCTIONS

DRAG SPECIALTIES BOBTAIL LUGGAGE RACK P/N 1510-0092



14. Install the luggage rack into position, and insert the front socket head screw (**item #1**) and flat washer (**item #2**) through the luggage rack, then the flat washer (**item #3**) or seat mounting bracket, then through the thick spacer (**item #4**) and screw it into the seat retainer nut. Do not tighten at this time.

15. Insert the two 1/4-20 button-head screws (**item #7**) through the rear rack mount and the license plate mount. Install the two washers (**item #8**) and nuts (**item #9**) onto the button-head screws.

16. Inspect the luggage rack and seat to make sure all components are mounted correctly.

17. Tighten the rear two button-head screws to 14 in.-lbs.

18. Tighten the front mounting screw to 12 ft.-lbs.

19. Install the taillight bulb and lens. Check for proper operation of the tail and brake light.

WARNING!: Before operating the motorcycle, be sure all hardware is tight. Check and make sure the seat is secured tightly and cannot move.

DRAG SPECIALTIES

3501 Kennedy Rd, PO Box 5222, Janesville, WI 53547-5222
P/N 1510-0092