

INSTALLATION INSTRUCTIONS

DRAG SPECIALTIES FORWARD CONTROLS FOR 04-09 XL MODELS P/N 1622-0140, 1622-0141, 1622-0349, 1622-0350

ATTENTION INSTALLER (IF OTHER THAN OWNER):

Please forward this Instruction Sheet to the purchaser of this product. These instructions contain valuable information necessary to the end user.

INTRODUCTION: These instructions describe the procedure for properly installing these forward controls on 2004-2009 XL models. Review instructions carefully before beginning, as they contain important information. Please retain for future reference.

Particularly important information is distinguished in these instructions by the following notations:

NOTE: A NOTE provides key information to make procedures easier or clearer.

CAUTION: A CAUTION indicates special procedures that must be followed to avoid damage to the motorcycle and/or accessories.

WARNING!: A WARNING indicates special procedures that must be followed to avoid injury to a motorcycle operator or person inspecting or repairing the motorcycle.

TOOLS REQUIRED:

External Retaining Ring Plier

Torx T30 bit

3/16" hex bit

1/4" hex bit

1/2" open-end wrench

9/16" open-end wrench

WARNING!: Drag Specialties recommends using a thread-locking adhesive on all hardware being installed.

PROCEDURE:

NOTE: Installation of the forward controls will be easier if the exhaust is removed prior to starting installation.

REMOVAL OF STANDARD CONTROLS (Brake side)

1. Using a Torx T30 bit, remove the brake rod from the brake pedal and the master cylinder bell crank.
2. Remove the two hex socket screws that secure the footpeg support bracket to the frame. Remove the footpeg, support bracket and brake pedal from the frame.
3. Remove the two hex socket bolts that secure the J-clip to the frame at the forward control mounting location.

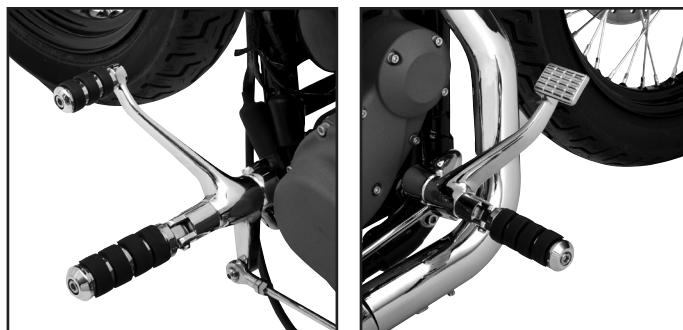
(Shifter side)

4. Remove pinch bolt from shift lever and remove shift lever from shaft. Rubber spacer should remain on the shift shaft.
5. Remove the footpeg support assembly from the frame and set aside.

INSTALLATION OF THE FORWARD CONTROLS

(Brake side)

6. Position J-clip against frame and mount right footpeg support bracket (10) using two bolts (3). Tighten bolts (3) to 45-50 ft.-lb.
7. Place brake lever (9) onto right-hand footpeg clevis (12).



8. Install right-hand footpeg clevis (12) into the footpeg support bracket (10), lining up the hole in the clevis with the hole in the footpeg support, making sure that the recess in the clevis is towards the top. Secure with hex socket screw (7) and external retaining ring (19). Tighten to 18-22 ft.-lb.
 9. Install footpeg (1) into footpeg clevis along with the "D" shaped spring washer (2). The spring washer should be installed with the flat side toward the motorcycle.
 10. Install footpeg clevis pin (8) to secure the footpeg.
 11. Install the footpeg clevis pin retaining ring (18) onto the footpeg clevis pin (8).
 12. Install brake rod (16) into the brake lever (9) and the rear brake bell crank. Tighten both bolts to 120-180 in.-lb.
- (Shifter side)**
13. Install shift lever (14) onto transmission shifter shaft. Make sure that the lever is pointing straight down. The shift lever should be mounted so the flat side is in toward the motor. Also make sure that the rubber spacer is between the engine and the shift lever. Secure with bolt (6), tighten to 16-20 ft.-lb.
 14. Install J-Clip and left-side footpeg support bracket (11) to frame with bolts (3). Tighten to 45-50 ft.-lb.

NOTE: If you are installing the standard length forward controls, skip step 15 and go directly to step 16. If you are installing the +2" forward controls, you must include step 15.

15. Install offset bracket mount (23) into footpeg support bracket (11). Line up the holes in both brackets and install bolt (7) and retaining ring (19). Tighten bolt to 18-22 ft.-lb.
16. Install shift lever (15) on footpeg clevis (13). Line up the hole in the footpeg clevis (13) with the hole in the offset bracket (23), making sure that the recess in the clevis is towards the top. Install the bolt (21) and retaining ring (19). Tighten bolt to 18-22 ft.-lb.
17. Install footpeg (1) into footpeg clevis along with the "D" shaped spring washer (2). The spring washer should be installed with the flat side toward the motorcycle.
18. Install footpeg clevis pin (8) to secure the footpeg. The pin should fit flush into the footpeg mount.
19. Install the footpeg clevis pin retaining ring (18) onto the footpeg clevis pin (8).
20. Install shift peg (20) onto the shift lever (15).
21. Install the two heim joints and nuts (22) onto the shifter rod (17). Tighten only finger tight at this time.
22. Install the shifter rod (17) to the transmission shift lever (14) with bolt (4). Tighten to 120-180 in.-lb.
23. Install the shifter rod (17) to the shift lever (15) with bolt (5). Also tighten this bolt to 120-180 in.-lb.



3501 Kennedy Rd, PO Box 5222, Janesville, WI 53547-5222
P/N 1622-0140, 1622-0141, 1622-0349, 1622-0350

INSTALLATION INSTRUCTIONS

DRAG SPECIALTIES FORWARD CONTROLS FOR 04-09 XL MODELS P/N 1622-0140, 1622-0141, 1622-0349, 1622-0350

24. Check adjustment of the shift lever by making certain that the shift lever is at a 45° angle. Lengthen or shorten the shift rod (17) to move the shift lever (14) to the correct location.
25. Tighten the jam nuts (22) on the shift rod (17), making sure that the heim joints can rotate freely.
26. Re-install the exhaust system.
27. Check all hardware, making sure it is tight.
28. After a short test ride, again re-check the hardware to make sure nothing has loosened.

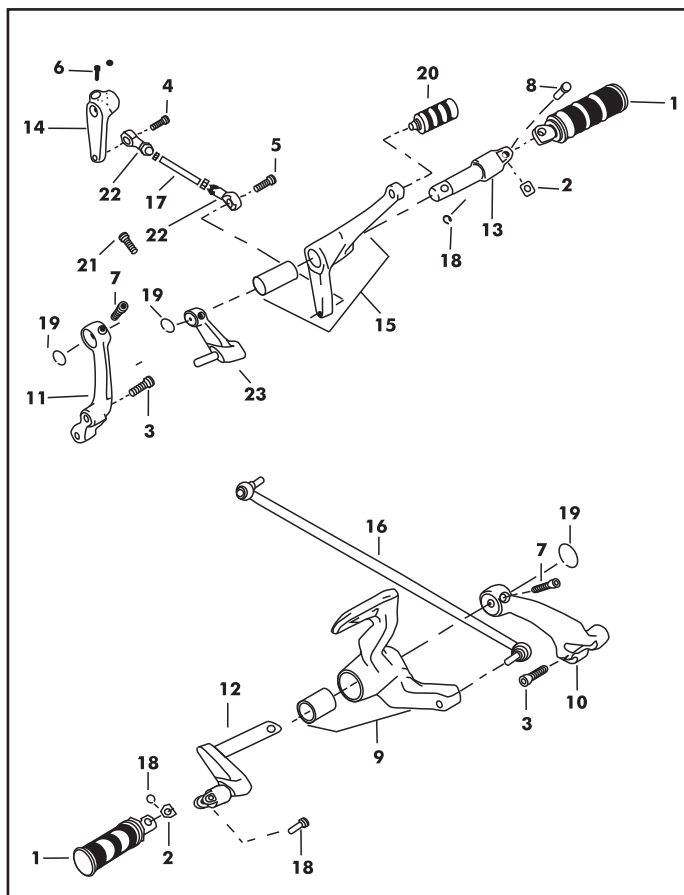
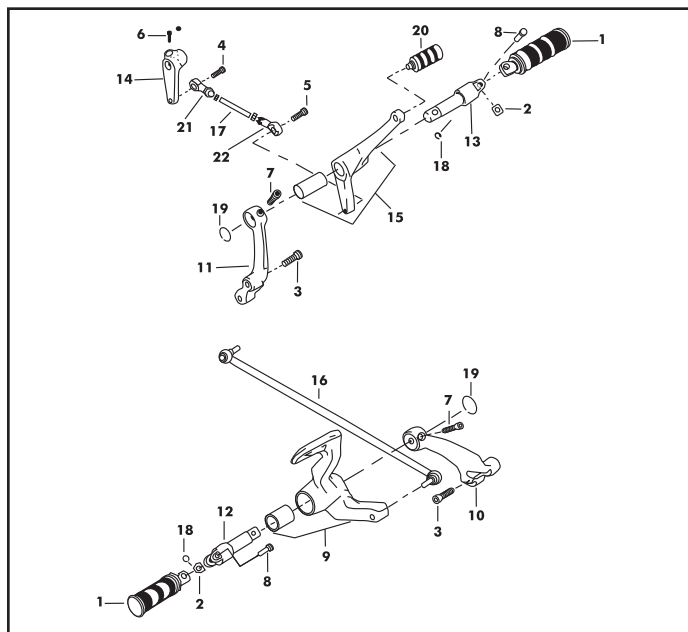
WARNING!: Before operating motorcycle, be sure all hardware is tight.

1622-0140, 1622-0349 FORWARD CONTROL KIT FOR 04-09 XL

ITEM	QUAN.	DESCRIPTION
1	2	Footpegs
2	2	Washer, footpeg spring (2)
3	4	Screw, 3/8"-16 x 1 1/4" (4)
4	1	Screw, 5/16"-18 x 7/8"
5	1	Screw, hex but (lock) 5/16"-18 x 1"
6	1	Screw, hex soc 1/4"-18 x 3/4"
7	2	Screw, hex soc 5/16"-18 x 1/4" (2)
8	2	Pin, footpeg clevis (2)
9	1	Assembly, brake pedal
10	1	Bracket, right rider footpeg support
11	1	Bracket, left rider footpeg support
12	1	Clevis, footpeg, right
13	1	Clevis, footpeg, left
14	1	Lever, shift shaft arm
15	1	Assembly, shift lever
16	1	Assembly, brake rod
17	1	Shift rod
18	2	Ring, footpeg clevis pin retaining (2)
19	2	Ring, footrest mount clevis retaining (2)
20	1	Shift peg
21	1	Screw, hex soc 5/16"-18 x 1" (1)
22	2	Heim joint and nut (2)

1622-0141, 1622-0350 2" EXT. FORWARD CONTROL KIT FOR 04-09 XL

ITEM	QUAN.	DESCRIPTION
1	2	Footpegs
2	2	Washer, footpeg spring (2)
3	4	Screw, 3/8"-16 x 1 1/4" (4)
4	1	Screw, 5/16"-18 x 7/8"
5	1	Screw, hex but (lock) 5/16"-18 x 1"
6	1	Screw, hex soc 1/4"-18 x 3/4"
7	2	Screw, hex soc 5/16"-18 x 1/4" (2)
8	2	Pin, footpeg clevis (2)
9	1	Assembly, brake pedal
10	1	Bracket, right rider footpeg support
11	1	Bracket, left rider footpeg support
12	1	Clevis offset, footpeg mount, right
13	1	Clevis, footpeg, left
14	1	Lever, shift shaft arm
15	1	Assembly, shift lever
16	1	Assembly, brake rod
17	1	Shift rod
18	2	Ring, footpeg clevis pin retaining (2)
19	3	Ring, footrest mount clevis retaining (3)
20	1	Shift peg
21	1	Screw, hex soc 5/16"-18 x 1" (1)
22	2	Heim joint and nut (2)
23	1	Bracket offset mount, left rider footpeg support



3501 Kennedy Rd, PO Box 5222, Janesville, WI 53547-5222
P/N 1622-0140, 1622-0141, 1622-0349, 1622-0350