

FEEL THE HEAT!

Harness Mounting Kit for Can-Am Maverick X3

Part # **14-2103** Can-Am Maverick X3

Congratulations on the purchase of the DragonFire Harness Mounting Kit for the Can-Am Maverick X3. This hardware not only allows you to safely install 4-point harnesses into your Maverick X3, but also gives you the benefit of being able to easily detach shoulder straps for adjustment or to remove the seat. Be sure to check out the full line of DragonFire Accessories for your Can-Am vehicle at your local authorized dealer or online at <http://www.DragonFireRacing.com>

WARNING

- Read and understand these instructions before installing product
- This product does not provide roll over protection
- Ensure harnesses are installed properly per the manufacturer's specifications
- Do not use product if there are any signs of damage

Disclaimer

Off road activities can be hazardous and could lead to injury, dismemberment, paralysis and death. No warranty of representation is made as to the products ability to protect the user from any injury or death. The user assumes that risk. The acceptance and /or use of this merchandise purchased from DragonFire by the customer hereby shall release DragonFire from any and all liability pertaining to the use of such merchandise.

Preinstallation: Layout components and compare to list and images below.

Tools Required

T27 Torx

Ratchet

13mm Socket & Wrench

18mm Socket & Wrench

5/8" Socket & Wrench



Hardware List

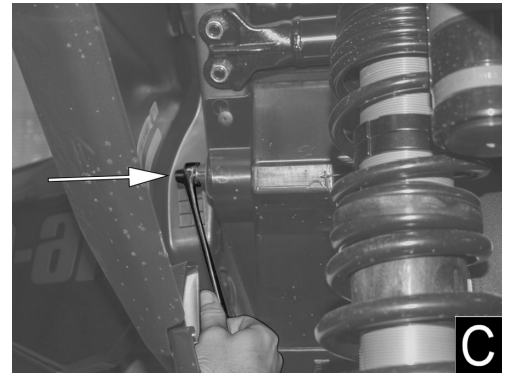
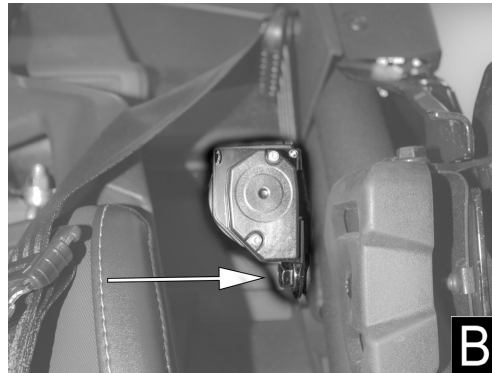
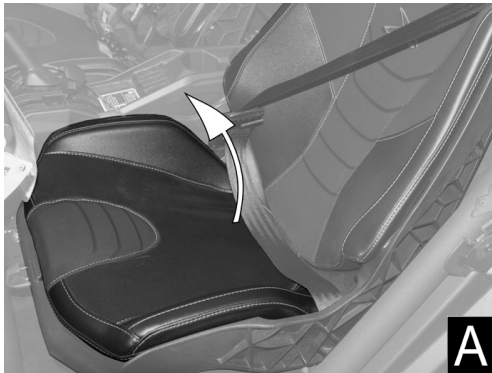
QTY	SIZE	LENGTH	TYPE	STEP USED
4	7/16"	3/4"	Hex Bolt, Fine Thread - Grade 8	12
4	7/16"	-	Nylon Lock Nut, Fine Thread - Grade 8	10
12	7/16"	-	SAE Flat Washer - Grade 8	10 & 12

Step 1: Place vehicle on a flat and level surface. Place gear selector in "Park" and remove keys from the ignition.

Step 2: Remove the bottom seat pad by lifting the back portion and lifting up. **(Figure A)** Set aside to be reinstalled in a later step.

Step 3: Locate the seatbelt retractor mechanism behind the seat and with the assistance of another person, remove the retractor from the vehicle. **(Figures B & C)** Discard hardware.

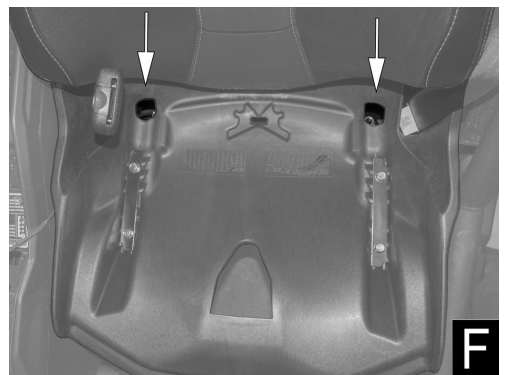
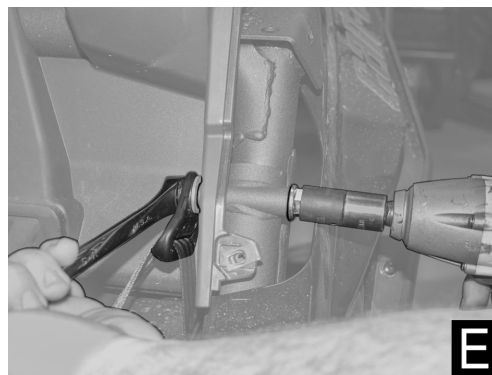
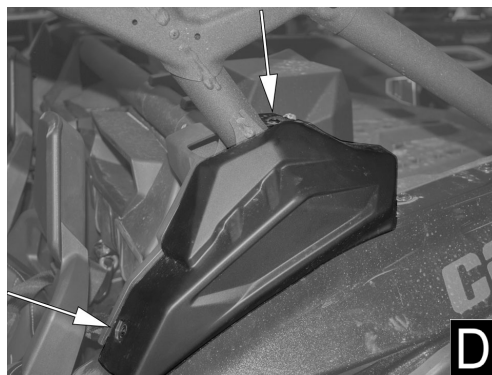
Note: If you plan to reuse the retractor for any reason, make sure the belt does not fully retract into mechanism.



Step 4: Remove the two screws retaining the plastic cover on the B-Pillar. **(Figure D)** Remove plastic cover and retain all parts and fasteners to be reinstalled in a later step.

Step 5: Remove factory seatbelt shoulder guide. **(Figure E)** Reinstall plastic cover removed in **Step 4**. Discard seatbelt hardware.

Step 6: Slide seat to allow access to rear mounting hardware through the holes in the seat bottom. **(Figure F)** Remove nuts and retain to be reinstalled in a later step.



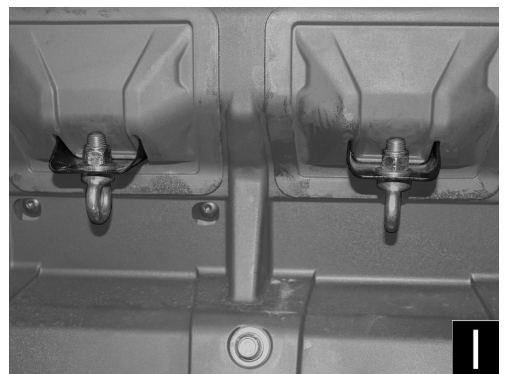
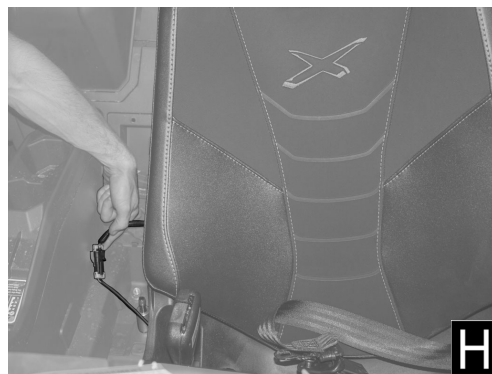
Step 7: Slide seat to the rear most position and remove the front mounting hardware. **(Figure G)** Retain all hardware to be reinstalled later.

***Step 8:** Lift seat out of the brackets and off of the rear studs and shift seat towards the outside of the vehicle to gain access to the seatbelt safety switch connector. **(Figure H)** Disconnect plug and pull retaining clip out of the vehicle plastic to allow seat to be removed.

Note: Connector shown in **Figure H** is where the DragonFire Harness OverRide Clip P/N: 14-2030 (sold separately) will be installed.

Step 9: Remove factory seat and set aside to be reinstalled in a later step.

Step 10: Place a washer on each eyelet bolt and install on the bottom side of the tabs located behind the seat, securing with a second washer and lock nut. Make sure eyelets are positioned so the sides of the ring are facing forward. **(Figure I)** Torque fasteners to 55 ft-lbs.

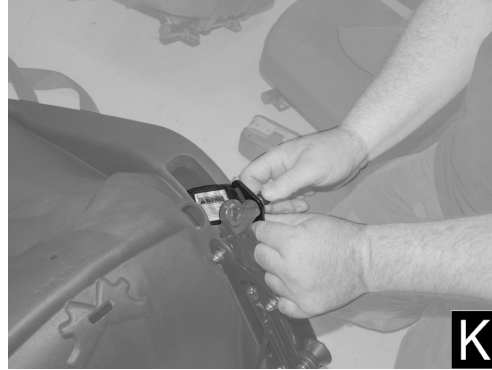


Step 11: Flip removed seat over and remove the bolts retaining the factory seat belt. **(Figure J)** Discard the seat belt and mounting hardware.

Step 12: Route the lap belts for the harnesses through the holes in the seat and attach using a supplied bolt with washer. **(Figure K)** Make sure the tab is rotated to keep the strap straight through the slot and torque bolts to 45 ft-lbs.

Step 13: Reinstall the factory seat using hardware removed in **Steps 6** and **7**. Torque fasteners to specifications in the factory service manual. Reverse **Step 2** to reinstall factory seat pad.

Step 14: Loop the harness shoulder straps through the quick release snap hooks. Route the straps through the cutouts on the headrest of the seats and attach the snap hooks to the eyelet bolts. **(Figure L)**



Step 15: Repeat Steps 2 through 14 for passenger side. ***Step 8** is only required for the driver side seat.

Step 16: This completes the installation. Time to ride and enjoy!

ProTip: Periodically check all hardware and re-tighten if needed.

For further assistance please contact us at customerservice@dragonfireracing.com or 1-800-708-9803.