

# POWER COMMANDER 6

Install guide for: PC6-22003

Model coverage: 2009-2020 Yamaha V-Max

## PARTS LIST

×

- |   |                    |   |                        |
|---|--------------------|---|------------------------|
| 1 | POWER COMMANDER 6  | 2 | POWER COMMANDER DECALS |
| 1 | INSTALLATION GUIDE | 2 | VELCRO STRIPS          |
| 1 | USB CABLE          | 1 | ALCOHOL SWAB           |
| 2 | DYNOJET DECALS     | 1 | POSI-TAP               |

**PLEASE READ ALL DIRECTIONS BEFORE STARTING INSTALLATION.  
THE IGNITION MUST BE TURNED OFF BEFORE INSTALLATION.**

×

IPC6-22003.01

**YAMAHA**

# INPUT ACCESSORY GUIDE



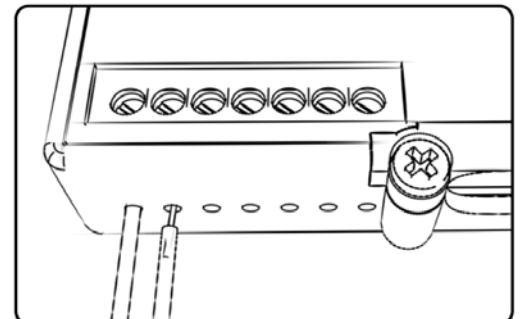
## OPTIONAL ACCESSORY INPUTS

- Map** (Input 1 or 2) The PC6 has the ability to hold 2 different base maps. You can switch on the fly between these two base maps when you hook up a switch to the MAP inputs. You can use any open/close type switch. The polarity of the wires is not important.
- Shifter** (Input 1 or 2) Used for clutch-less full throttle upshifts. Insert the wires from the Dynojet quick shifter into either Input 1 or Input 2. The polarity of the wires is not important. Set to Input 2 by default.
- Speed** If your application has a speed sensor then you can tap into the signal side of the sensor and run a wire into this input. This will allow you to calculate gear position in the Control Center Software. Once gear position is setup you can alter your map based on gear position and setup gear dependent kill times when using a quickshifter.
- Analog** This input is for a 0-5v signal such as engine temp, boost, etc. Once this input is established you can alter your fuel curve based on this input in the Power Core software.
- Launch** You can connect a wire to either Input 1 or Input 2 and then the other end to a switch. This switch when engaged (continuity) will only allow the RPM to be raised to a certain limit (set in the software). When released, you will have full RPM.

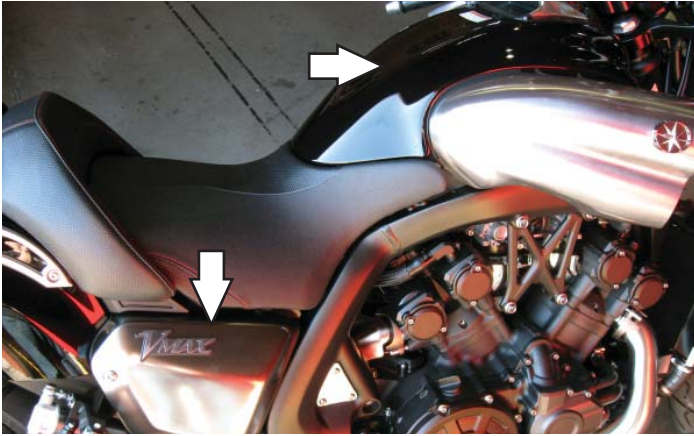
## WIRE CONNECTIONS

To input wires into the PC6 first remove the rubber plug on the backside of the unit and loosen the screw for the corresponding input. Using a 22-24 gauge wire, strip about 10mm from its end. Push the wire into the hole of the PC6 until it stops and then tighten the screw. Make sure to reinstall the rubber plug.

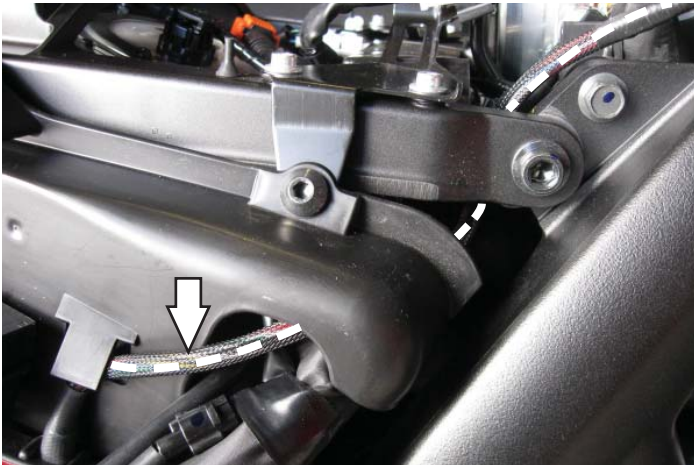
NOTE: If you tin the wires with solder it will make inserting them easier.



# INSTALLING THE POWER COMMANDER 6



- 1 Remove the main seat.
- 2 Remove the cosmetic air box cover and side panel.



- 3 Lay the PC6 under the right hand side cover temporarily.
- 4 Route the PC6 harness inside of the sub-frame and go up towards the battery.



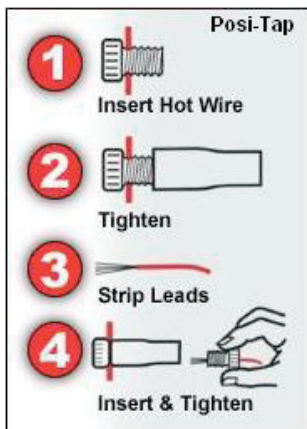
- 5 Unplug the connectors from the throttle bodies.  
These connectors are located to the right side of the ECU. One connector is a WHITE 3-pin and the other is a CLEAR 4-pin.

- 6 Plug the connectors from the PC6 in-line of the stock wiring harness and throttle bodies.



- 7 Using the supplied Posi-Tap attach the GREY wire of the PC6 harness to the stock WHITE wire of the small ECU plug.

This is pin #5.



- 8 Attach the ground wire of the PC6 to the negative side of the battery.

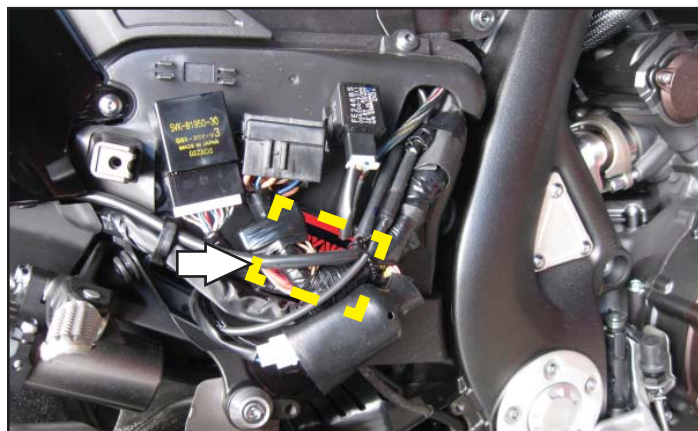


- 9 Using the supplied Velcro, secure the PC6 to the plastic cover under the right hand side cover. Mount the PC6 behind the stock electronics.

Make sure to clean both surfaces with the alcohol swab before attaching.

- 10 Install the covers and seat.

Download the latest map files from our web site at [dynojet.com/tunes](http://dynojet.com/tunes).





**PUSH  
THE  
LIMIT**

**2191 MENDENHALL DRIVE, NORTH LAS VEGAS, NV 89081 - 800-992-4993 - DYNOJET.COM**  
**© 2009-2022 DYNOJET RESEARCH ALL RIGHTS RESERVED**