

Thank you for purchasing this Dynojet kit. This kit has been developed for a motorcycle which is set to the parameters listed at the right in the "Stage" description. If your motorcycle does not meet any of these parameters please check with Dynojet before installation. For technical assistance contact your Dynojet distributor or call Dynojet U.S.A. (800)-992-4993

2191 Mendenhall Dr. Suite 105  
North Las Vegas, NV 89081  
TEL: 702-399-1423  
FAX: 702-399-1431  
8am-5pm Pacific Time  
Monday through Friday

Website Address  
<http://www.dynojet.com>

The manufacturer and seller make no warranties express or implied which extend beyond the description of the goods contained herein. Any description of this product is for the purpose of identifying it and shall not be deemed to create an express warranty.

# Dynojet

**3166.001**  
U.S Models Only

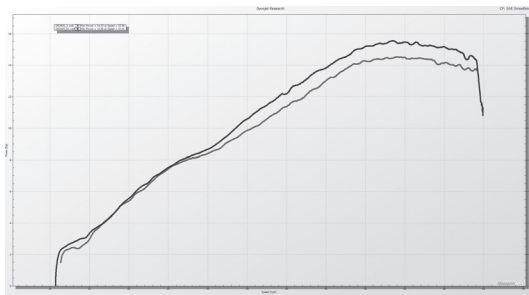
*1996 - 2016 Suzuki DR200 S & SE*  
**Stage 1 & 2**

## Stage 1

For mildly tuned machines using the stock airbox, with stock or K&N filter. May also be used with a good aftermarket exhaust system.

## Stage 2

For mildly tuned machines with the top of the airbox removed, with stock or K&N filter. May also be used with a good aftermarket exhaust system.



*This graph shows a typical gain with a Dynojet jet kit.*

# WARNING

**NO SMOKING!  
NO OPEN FLAME!  
WHILE INSTALLING  
YOUR DYNOJET KIT**

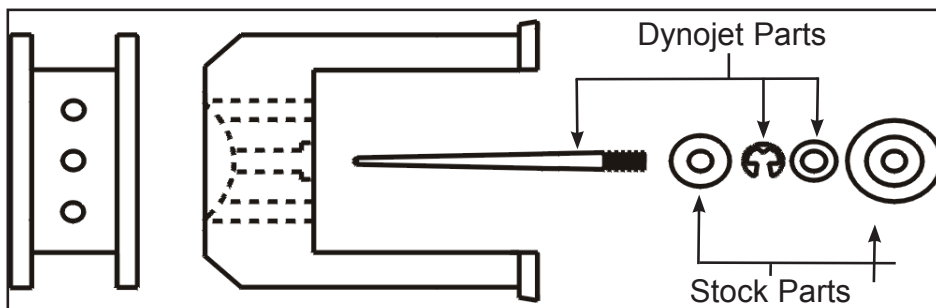
## PARTSLIST

1	Main Jet	DJ120
1	Main Jet	DJ124
1	Main Jet	DJ128
1	Main Jet	DJ132
1	Main Jet	DJ142
1	Main Jet	DJ146
1	Main Jet	DJ150
1	Main Jet	DJ155
1	Fuel Needle	DNO212
1	E-Clip	DE0001
1	Adjusting Washer	DW0001
1	Slide Spring	DSP007M
1	Screw	DS0001
1	Plug Drill	DD 5/32

## STAGE ONE INSTRUCTIONS

1. Remove the vacuum slide from carb. Remove stock needle and spacer, noting order of assembly (Fig. A).
2. Install the Dynojet needle on groove #4 from the top. Use all stock spacers (Fig. A). Install the Dynojet slide spring (DSP007M) in place of the stock slide spring. After installing the slide in the carb be sure to check slide movement manually before airbox installation.
3. Remove the stock main jet, there is a washer under the main jet. Reinstall the stock washer with the Dynojet main jet provided. If you are running the stock exhaust, install the DJ124 main jet. If you are running an aftermarket exhaust or slip-on with a high flowing baffle, use the DJ128 main jet.
4. Locate the fuel mixture plug (Fig. B). If you see a screw head at Fig. B proceed to adjusting procedure. With the 5/32 drill bit provided carefully drill through the plugs. **NOTE: The mixture screw is directly underneath this plug, be ready to pull back on the drill the instant you break through.** Use screw provided to secure and remove this plug. Carefully turn mixture screws clockwise until lightly seated, then back out 3 turns.

Fig. A



## STAGE TWO INSTRUCTIONS

- Note:** When using Stage 2 you must remove the top of the airbox.
1. Remove the vacuum slide from carb. Remove stock needle and spacer, noting order of assembly (Fig. A).
  2. Install the Dynojet needle on groove #4 from the top. Use all stock spacers (Fig. A). Install the Dynojet slide spring (DSP007M) in place of the stock slide spring. After installing the slide in the carb be sure to check slide movement manually before airbox installation.
  3. Remove the stock main jet, there is a washer under the main jet. Reinstall the stock washer with the Dynojet main jet provided. If you are running the stock exhaust, install the DJ146 main jet. If you are running an aftermarket exhaust or slip-on with a high flowing baffle, use the DJ150 main jet.
  4. Locate the fuel mixture plug (Fig. B). If you see a screw head at Fig. B proceed to adjusting procedure. With the 5/32 drill bit provided carefully drill through the plugs. **NOTE: The mixture screw is directly underneath this plug, be ready to pull back on the drill the instant you break through.** Use screw provided to secure and remove this plug. Carefully turn mixture screws clockwise until lightly seated, then back out 3 turns.

**Dynojet**

**3166.001**

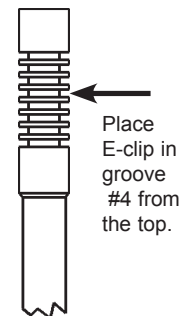
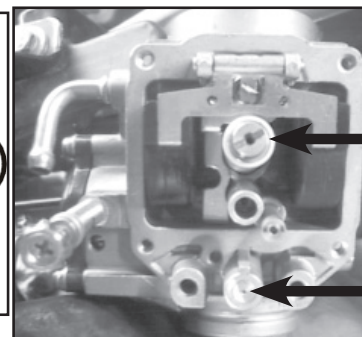


Fig. B



Main Jet Location.  
Re-use the stock main jet washer under the Dynojet main jet.

Mixture Screw Location.