

POWER COMMANDER V

2020 Yamaha MT-03 Installation Guide

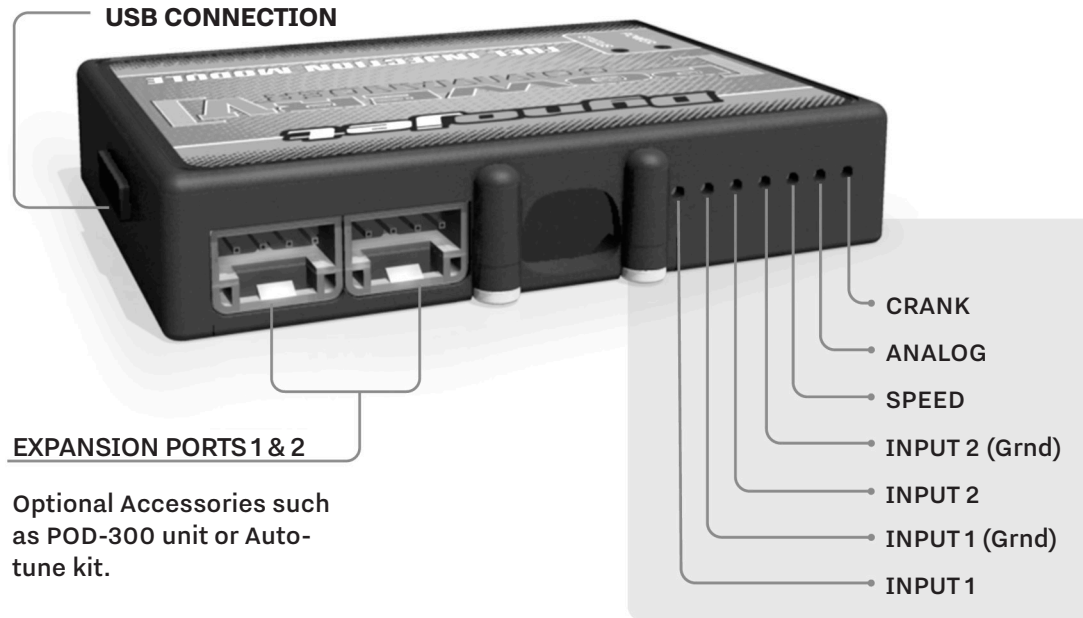
PARTS LIST

- | | |
|----------------------|--------------------------|
| 1 POWER COMMANDER V | 2 DYNOJET DECALS |
| 1 INSTALLATION GUIDE | 2 POWER COMMANDER DECALS |
| 1 USB CABLE | 1 ALCOHOL SWAB |
| 2 VELCRO STRIPS | |

PLEASE READ ALL DIRECTIONS BEFORE STARTING INSTALLATION



POWER COMMANDER V INPUT ACCESSORY GUIDE



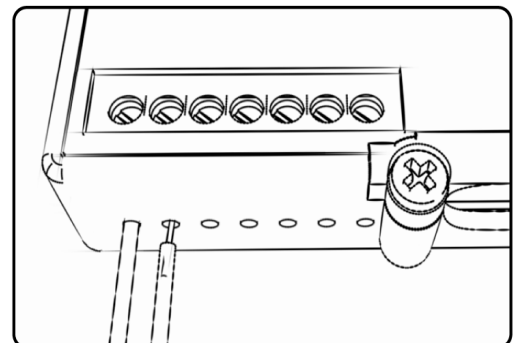
ACCESSORY INPUTS:

- Map -** (Input 1 or 2) The PCV has the ability to hold 2 different base maps. You can switch on the fly between these two base maps when you hook up a switch to the MAP inputs. You can use any open/close type switch. The polarity of the wires is not important. When using the Autotune kit one position will hold a base map and the other position will let you activate the learning mode. When the switch is "CLOSED" Autotune will be activated.
- Shifter-** (Input 1 or 2) These inputs are for use with the Dynojet quickshifter. Insert the wires from the Dynojet quickshifter into the SHIFTER inputs. The polarity of the wires is not important.
- Speed-** If your application has a speed sensor then you can tap into the signal side of the sensor and run a wire into this input. This will allow you to calculate gear position in the Control Center Software. Once gear position is setup you can alter your map based on gear position and setup gear dependent kill times when using a quickshifter.
- Analog-** This input is for a 0-5v signal such as engine temp, boost, etc. Once this input is established you can alter your fuel curve based on this input in the control center software.
- Crank-** Do NOT connect anything to this port unless instructed to do so by Dynojet. It is used to transfer crank trigger data from one module to another.

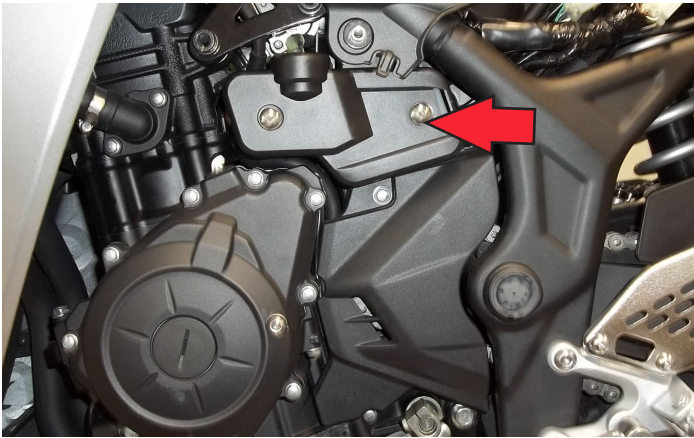
WIRE CONNECTIONS:

To input wires into the PCV first remove the rubber plug on the backside of the unit and loosen the screw for the corresponding input. Using a 22-24 gauge wire strip about 10mm from its end. Push the wire into the hole of the PCV until it stops and then tighten the screw. Make sure to reinstall the rubber plug.

NOTE: If you tin the wires with solder it will make inserting them easier.

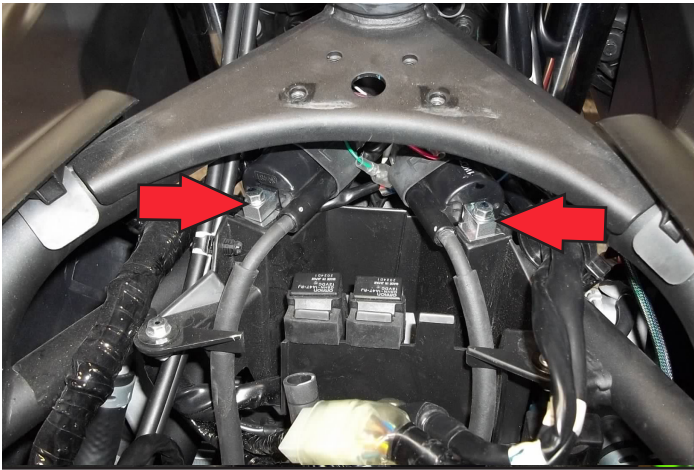


INSTALLING THE POWER COMMANDER V



REMOVE COOLANT RESERVE BOTTLE

- 1 Remove the seats, the fuel tank shell, the side panels below the fuel tank, and the fuel tank.
- 2 Loosen the coolant reserve bottle.



REMOVE THE COILS

- 3 Remove the bolts that hold the ignition coils in place.

This allows access to the wiring harness

- 4 Lay the PCV in the tail section and route the harness down the right side of the bike and go towards the coils.



CONNECT TO IGNITION COILS

- 5 Plug the PCV in-line of the ignition coils and wiring harness.

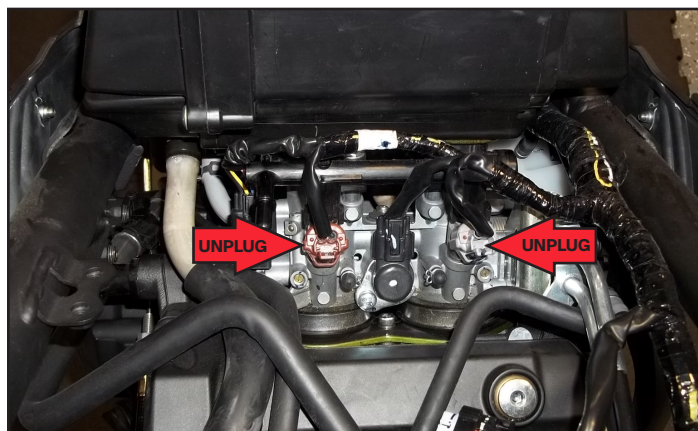
PCV GREEN wires - left coil - ORANGE stock wire

PCV RED/WHITE wires - left coil - RED/BLACK stock wire

PCV BLUE wires - right coil - GREY/RED stock wire

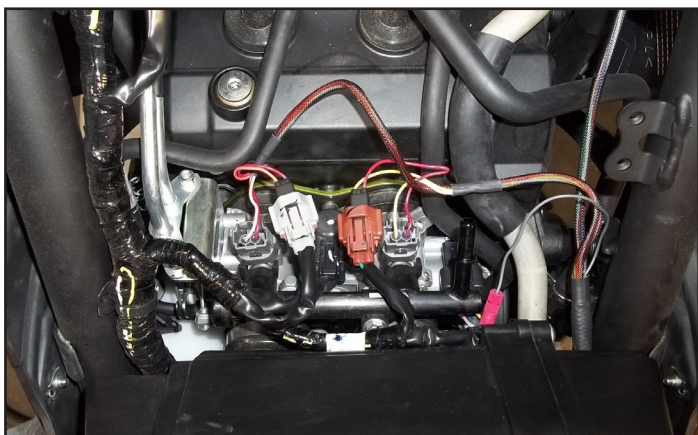
INSTALLING THE POWER COMMANDER V

- 6 Unplug the stock harness from the fuel injectors.



UNPLUG THE FUEL INJECTORS

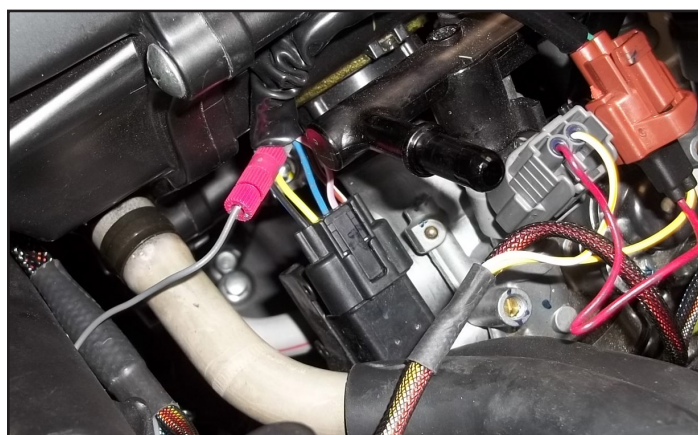
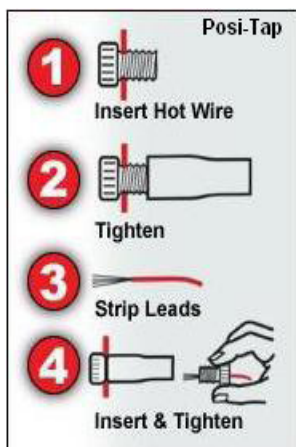
- 7 Plug the PCV in-line of the stock injectors and wiring harness
- PCV Orange wires - left, Grey stock connector
- PCV Yellow wires - right, Brown stock connector



CONNECT TO THE FUEL INJECTORS

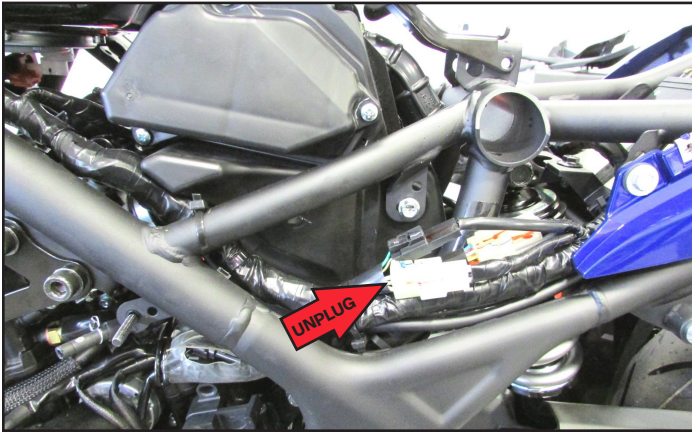
- 8 Using the supplied Posi-Tap attach the GREY wire of the PCV to the stock YELLOW wire of the bike's Throttle Position Sensor.

The TPS is located on the left side of the throttle body.



POSI-TAP TO TPS

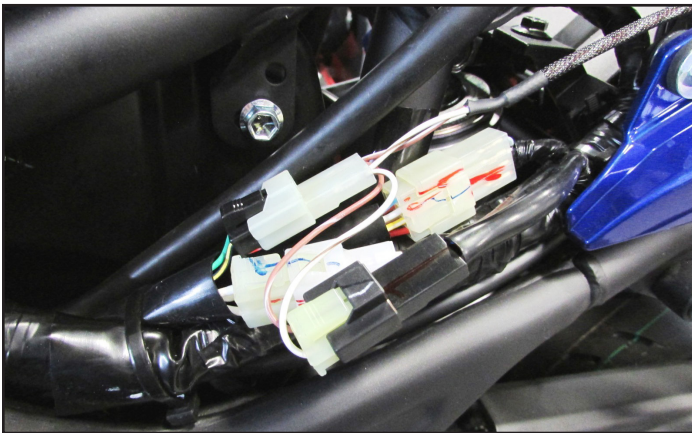
INSTALLING THE POWER COMMANDER V



UNPLUG THE CPS

- 9 Unplug the crank position sensor connector.

This is a BLACK connector pair on the left side of the motorcycle.



CONNECT TO THE CPS

- 10 Plug the PCV in-line of the CPS and wiring harness.



INSTALL AND GROUND

- 11 Secure the PCV in the tail section using the supplied Velcro.

Make sure to clean both surfaces with the alcohol swab before attaching

- 12 Attach the ground wire from the PCV to the negative (-) side of the battery.

- 13 Reinstall the coils, the fuel tank, the coolant reserve bottle, all of the bodywork, and the seats.



PUSH THE LIMIT

2191 MENDENHALL DRIVE, NORTH LAS VEGAS, NV 89081 - 800-992-4993 - DYNOJET.COM

© 2019 DYNOJET RESEARCH ALL RIGHTS RESERVED