

POWER VISION

Can-Am Outlander Installation Guide

PARTS LIST

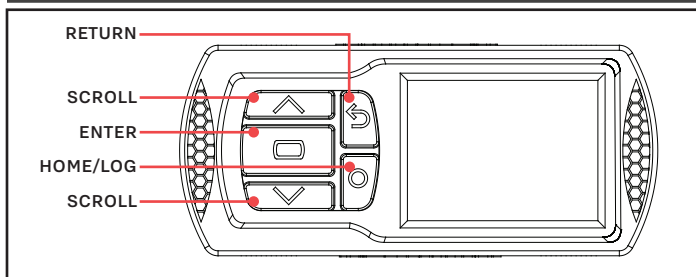


- | | | | |
|---|---------------|---|----------------|
| 1 | POWER VISION | 2 | VELCRO |
| 1 | VEHICLE CABLE | 2 | DYNOJET DECALS |
| 1 | USB CABLE | | |

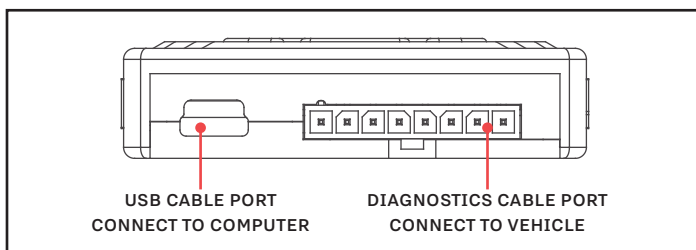
PLEASE READ ALL DIRECTIONS BEFORE STARTING INSTALLATION



INTRODUCTION



POWER VISION OVERVIEW—FRONT VIEW

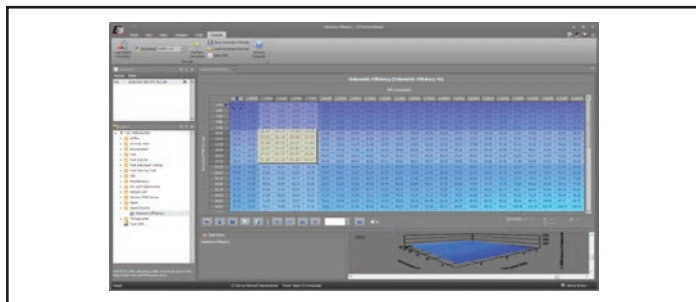


POWER VISION OVERVIEW—SIDE VIEW

Thank you for purchasing the Power Vision from Dynojet Research. The Power Vision is the device to interface between your computer and vehicle ECU allowing you to tune your stock ECU to achieve optimal performance from your vehicle.

Use the buttons to navigate the device menus, make selections, cycle through the four available gauge screens, and log data. Connect to the diagnostic port to flash a tune; use the USB connection to interface between the Power Vision and your computer.

INSTALLING THE POWER CORE SOFTWARE



Download the Power Core software and take tuning to a whole new level.

- 1 Go to www.dynojet.com/PowerVision.
- 2 From the top navigation menu, select **Support>Downloads**.
- 3 Select **Power Vision CX** from the drop-down menu.
- 4 Download the Dynojet Power Core software.
- 5 Double-click the saved file to begin installation. Follow the on-screen prompts. Refer to the Power Core Help for more information.

INSTALLING THE POWER VISION



DIAGNOSTIC PORT

- 1 Secure the Power Vision to the vehicle using the supplied Velcro. Make sure the Power Vision will not interfere with the operation and steering of the vehicle.

Note: The Power Vision does not need to be mounted to the vehicle.

- 2 Attach the diagnostic cable to the diagnostic port on the Power Vision and to the diagnostic port on the vehicle.
Outlander Models: located under the seat.

GETTING STARTED

Use the Tune File Wizard to prepare your Power Vision device with the stock (stk) and tune (djt) files needed to flash your vehicle.

- 1 Connect the Power Vision to the vehicle.
- 2 Turn the key on. The Power Vision will scan for files.

There are three possible file states:

File State 1: No compatible stock files.

File State 2: No compatible tune files.

File State 3: All required files found.

- 3 Gauges are displayed.

Connect the Power Vision to the vehicle diagnostic port to collect ECU information. Turn the key on.



File State 1:

Go to www.dynojet.com/pvtunes to download stock and tune files.

GETTING STARTED

NO COMPATIBLE STOCK FILES

To download tunes, visit:
WWW.DYNOJET.COM/PVTUNES
PRESS  TO SEARCH AGAIN

File State 2:

Go to www.dynojet.com/pvtunes to download tune files.

GETTING STARTED

NO COMPATIBLE TUNE FILES

To download tunes, visit:
WWW.DYNOJET.COM/PVTUNES
PRESS  TO SEARCH AGAIN

File State3:

All required files found. The Power Vision is ready to flash a tune to the connected vehicle.

READY TO FLASH

ALL REQUIRED FILES FOUND

PRESS  TO READ ECU
PRESS  TO EXIT WIZARD

FLASHING YOUR VEHICLE

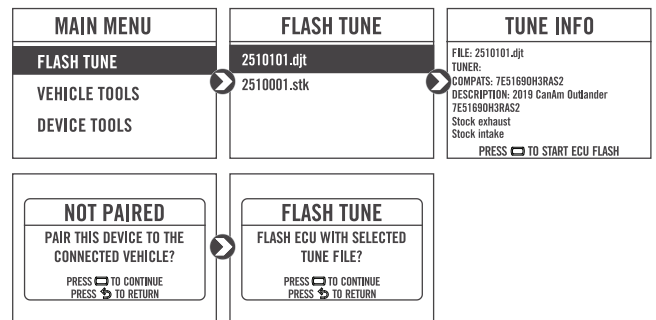
The Power Vision must be paired to the connected vehicle ECU to function properly.

Note: Once paired to the vehicle ECU, the Power Vision will not work on another vehicle without purchasing a tune license.

- 1 From the Main Menu, select **Flash Tune**.
- 2 Select the tune file and press **Enter** to view the Tune Info.
- 3 Press **Enter** to accept the tune and pair the Power Vision to the vehicle.

Note: Pair to vehicle will only happen on the first flash.

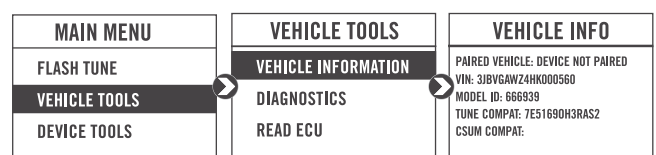
- 4 Press **Enter** to pair and lock the Power Vision to the ECU and to begin the flash. Do not turn off the key switch or disconnect the Power Vision during the flash.
- 5 After the flash is complete, turn the key off and wait 45 seconds before turning the key back on to start.



VIEWING THE VEHICLE INFORMATION

This menu allows you to view the device status (paired/not paired), VIN #, Model ID, ECU serial number, tune compat, and checksum compat.

Select **Vehicle Tools>Vehicle Information**.



VIEWING THE DIAGNOSTIC CODES

This menu allows you to read and clear diagnostic trouble codes.

- 1 To read codes, select **Vehicle Tools>Diagnostics>Active Codes**.
- 2 To clear codes, select **Vehicle Tools>Diagnostics>Clear Codes**.

MAIN MENU	VEHICLE TOOLS	DIAGNOSTICS
FLASH TUNE	VEHICLE INFORMATION	ACTIVE CODES
VEHICLE TOOLS	DIAGNOSTICS	HISTORIC CODES
DEVICE TOOLS	READ ECU	CLEAR CODES

DELETING DATA LOGS

This menu allows you to delete data logs.
Select **Vehicle Tools>Delete Data Log**.

MAIN MENU	VEHICLE TOOLS
FLASH TUNE	DIAGNOSTICS
VEHICLE TOOLS	READ ECU
DEVICE TOOLS	DELETE DATA LOG

CONFIGURING GAUGES AND LOGGING DATA

This menu allows you to configure up to four different gauge screens. Each gauge screen has four configurable channels.

- 1 From the Main Menu, select **Device Tools>Configure Gauges**.
 - 2 Select a gauge screen and press **Enter**.
 - 3 Select a channel and press **Enter**.
 - 4 Select a channel from the list and press **Enter**.
 - 5 Select the precision or units for that channel and press **Enter**.
 - 6 Continue setting up the remaining channels as desired.
 - 7 Continue configuring the remaining gauge screens as desired.
 - 8 Press the **Log** button to begin logging. Press the **Log** button again to stop logging.
 - 9 Use the Power Core software to view log files.
- Snapshot Log:** Press and hold the **Log** button for two seconds to record a two minute log.

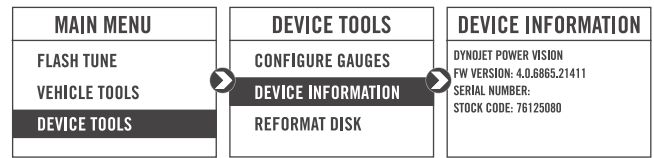
MAIN MENU	DEVICE TOOLS	CONFIGURE GAUGES
FLASH TUNE	CONFIGURE GAUGES	SCREEN 1
VEHICLE TOOLS	DEVICE INFORMATION	SCREEN 2
DEVICE TOOLS	REFORMAT DISK	SCREEN 3
		SCREEN 4

CONFIGURE SCREEN	SELECT UNIT	SELECT PRECISION
CHANNEL 1	RPM	0
CHANNEL 2	RPMx10	0.0
CHANNEL 3	RPMx100	0.00
CHANNEL 4	RPMx1000	0.000

VIEWING THE DEVICE INFORMATION

This menu allows you to view the device firmware version, serial number, and stock code.

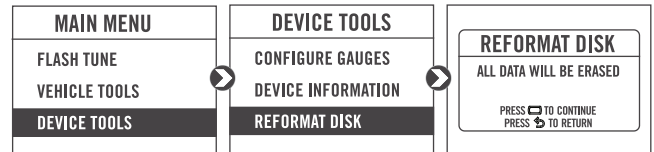
Select **Device Tools>Device Information**.



REFORMATTING THE DISK

This menu allows you to reformat the disk and erase all data.

Select **Device Tools>Reformat Disk**.

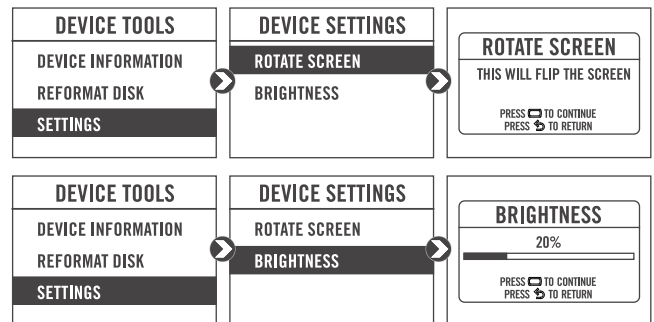


CHANGING THE SETTINGS

This menu allows you to rotate the screen allowing you to change the orientation of the Power Vision device along with adjusting the screen brightness.

Select **Device Tools>Settings>Rotate Screen** to flip the screen.

Select **Device Tools>Settings>Brightness** to change the screen brightness.



UPDATING THE DEVICE

This menu allows you to update the device with the latest firmware.

Select **Device Tools>Update Device**.



PUSH THE LIMIT

2191 MENDENHALL DRIVE, NORTH LAS VEGAS, NV 89081 - 800-992-4993 - DYNOJET.COM

© 2019 DYNOJET RESEARCH ALL RIGHTS RESERVED

INSTALLATION GUIDE