

POWER VISION

Honda CRF1000L Installation Guide

PARTS LIST



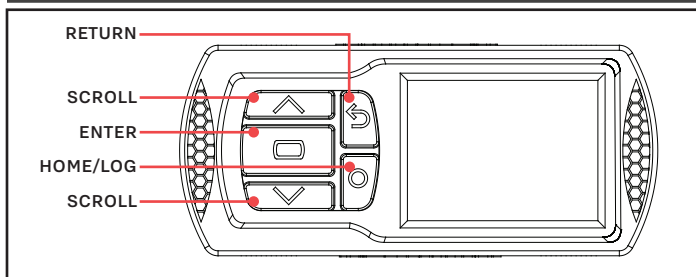
- | | | | |
|---|---------------|---|----------------|
| 1 | POWER VISION | 2 | VELCRO |
| 1 | VEHICLE CABLE | 2 | DYNOJET DECALS |
| 1 | USB CABLE | | |

PLEASE READ ALL DIRECTIONS BEFORE STARTING INSTALLATION

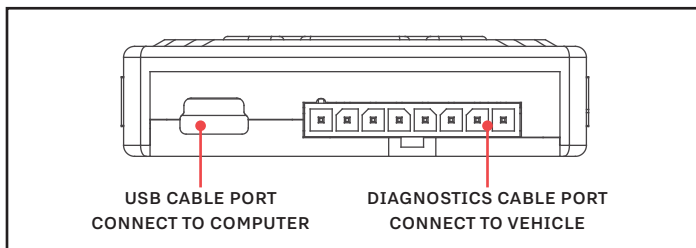
× 98200132



INTRODUCTION



POWER VISION OVERVIEW—FRONT VIEW

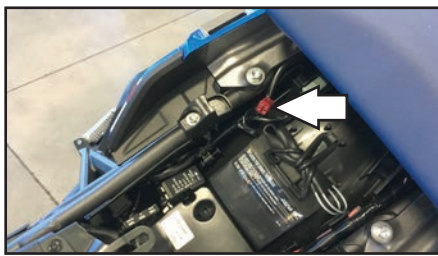


POWER VISION OVERVIEW—SIDE VIEW

Thank you for purchasing the Power Vision from Dynojet Research. The Power Vision is the device to interface between your computer and vehicle ECU allowing you to tune your stock ECU to achieve optimal performance from your vehicle.

Use the buttons to navigate the device menus, make selections, cycle through the four available gauge screens, and log data. Connect to the diagnostic port to flash a tune; use the USB connection to interface between the Power Vision and your computer.

INSTALLING THE POWER VISION



DIAGNOSTIC PORT

- 1 Secure the Power Vision to the vehicle using the supplied Velcro. Make sure the Power Vision will not interfere with the operation and steering of the vehicle.

Note: The Power Vision does not need to be mounted to the vehicle.

- 2 Attach the diagnostic cable to the diagnostic port on the Power Vision and to the diagnostic port on the vehicle.
CRF1000L Models: located under the seat.

Note: Leave the 4-pin CAN connector disconnected.

This connector is only used with the Wideband module for Honda (P/N WB-PV16-1).

GETTING STARTED

Use the Tune File Wizard to prepare your Power Vision device with the stock (stk) and tune (djt) files needed to flash your vehicle.

- 1 Connect the Power Vision to the vehicle.
- 2 Turn the key on. The Power Vision will scan for files.

There are three possible file states:

File State 1: No compatible tune or stock files.

File State 2: No compatible tune files.

File State 3: All required files found.

- 3 Gauges are displayed.

Connect the Power Vision to the vehicle diagnostic port to collect ECU information. Turn the key on.



File State 1:

Go to www.dynojet.com/pvtunes to download stock and tune files.

GETTING STARTED

NO COMPATIBLE STOCK FILES
An ECU read is required to begin the tuning process.

PRESS TO READ ECU
PRESS TO EXIT WIZARD

File State 2:

Go to www.dynojet.com/pvtunes to download tune files.

GETTING STARTED

NO COMPATIBLE TUNE FILES

To download tunes, visit:
WWW.DYNOJET.COM/PVTUNES
PRESS TO SEARCH AGAIN

File State 3:

All required files found. The Power Vision is ready to flash a tune to the connected vehicle.

READY TO FLASH

ALL REQUIRED FILES FOUND

PRESS TO READ ECU
PRESS TO EXIT WIZARD

FLASHING YOUR VEHICLE

The Power Vision must be paired to the connected vehicle ECU to function properly.

Note: Once paired to the vehicle ECU, the Power Vision will not work on another vehicle without purchasing a tune license.

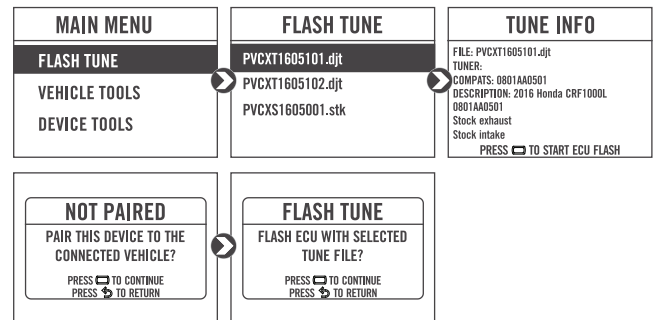
- 1 From the Main Menu, select **Flash Tune**.
- 2 Select the tune file (.djt) and press **Enter** to view the Tune Info.

Note: The Dynojet tune file (.djt) is a tune file which is different (better than stock performance or the necessary file when bolting on an exhaust, for example); the stock file (.stk) is the direct duplicate of what the OEM shipped.

- 3 Press **Enter** to accept the tune and pair the Power Vision to the vehicle.

Note: Pair to vehicle will only happen on the first flash.

- 4 Press **Enter** to pair and lock the Power Vision to the ECU and to begin the flash. Do not turn off the key switch or disconnect the Power Vision during the flash.
- 5 After the flash is complete, turn the key off and wait 45 seconds before turning the key back on to start.



VIEWING THE VEHICLE INFORMATION

This menu allows you to view the device status (paired/not paired), VIN #, Model ID, ECU serial number, tune compat, and checksum compat.

Select **Vehicle Tools>Vehicle Information**.



98200132

DYNOJET

VIEWING THE DIAGNOSTIC CODES

This menu allows you to read and clear diagnostic trouble codes.

- 1 To read codes, select **Vehicle Tools>Diagnostics>Active Codes**.
- 2 To clear codes, select **Vehicle Tools>Diagnostics>Clear Codes**.

| MAIN MENU | VEHICLE TOOLS | DIAGNOSTICS |
|---------------|---------------------|----------------|
| FLASH TUNE | VEHICLE INFORMATION | ACTIVE CODES |
| VEHICLE TOOLS | DIAGNOSTICS | HISTORIC CODES |
| DEVICE TOOLS | READ ECU | CLEAR CODES |

CONFIGURING GAUGES

This menu allows you to configure up to four different gauge screens. Each gauge screen has four configurable channels.

- 1 From the Main Menu, select **Device Tools>Configure Gauges**.
- 2 Select a gauge screen and press **Enter**.
- 3 Select a channel and press **Enter**.
- 4 Select a channel from the list and press **Enter**.
- 5 Select the precision or units for that channel and press **Enter**.
- 6 Continue setting up the remaining channels as desired.
- 7 Continue configuring the remaining gauge screens as desired.


| MAIN MENU | DEVICE TOOLS | CONFIGURE GAUGES |
|---------------|--------------------|------------------|
| FLASH TUNE | CONFIGURE GAUGES | SCREEN 1 |
| VEHICLE TOOLS | DEVICE INFORMATION | SCREEN 2 |
| DEVICE TOOLS | REFORMAT DISK | SCREEN 3 |
| | | SCREEN 4 |

| CONFIGURE SCREEN | SELECT UNIT | SELECT PRECISION |
|------------------|-------------|------------------|
| CHANNEL 1 | RPM | 0 |
| CHANNEL 2 | RPMx10 | 0.0 |
| CHANNEL 3 | RPMx100 | 0.00 |
| CHANNEL 4 | RPMx1000 | 0.000 |

LOGGING DATA

- 1 Press the **Log** button to begin logging. The Power Vision screen will illuminate a bright red banner across the top when logging.
- 2 Press the **Log** button again to stop logging.
- 3 Use the Power Core software to view log files.

Snapshot Log: Press and hold the **Log** button for two seconds to record the previous two minutes of operating time.

| | | |
|--|---|-----------------------------|
| DATA LOG DATA LOGGING HAS STARTED. PRESS AGAIN TO STOP |  Engine Speed 2550 RPM TPS 10.5 AFR 1 14.6 STFT -6.3 | SAVING LOG SAVING LOG... |
|--|---|-----------------------------|

| |
|---|
| DATA LOG 1605101_LOG_1.wp8 SAVED SUCCESSFULLY |
|---|

DELETING DATA LOGS

This menu allows you to delete data logs.

- 1 Select **Vehicle Tools>Delete Data Log**.
- 2 Select a specific log to delete or select ***Delete All Logs***.

| MAIN MENU | VEHICLE TOOLS | LOG FILES |
|---------------|-----------------|-------------------|
| FLASH TUNE | DIAGNOSTICS | *Delete All Logs* |
| VEHICLE TOOLS | READ ECU | 1605101_LOG_1.wp8 |
| DEVICE TOOLS | DELETE DATA LOG | 1605101_LOG_2.wp8 |
| | | 1605101_LOG_3.wp8 |

VIEWING THE DEVICE INFORMATION

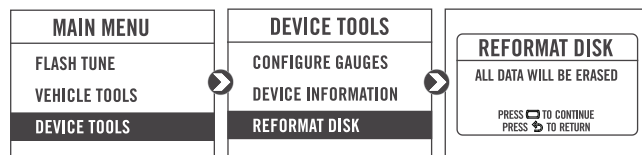
This menu allows you to view the device firmware version, serial number, and stock code.

Select **Device Tools>Device Information**.

| MAIN MENU | DEVICE TOOLS | DEVICE INFORMATION |
|---------------|--------------------|----------------------------|
| FLASH TUNE | CONFIGURE GAUGES | DYNOJET POWER VISION |
| VEHICLE TOOLS | DEVICE INFORMATION | FW VERSION: 5.0.8904.16507 |
| DEVICE TOOLS | REFORMAT DISK | SERIAL NUMBER: PV00029757 |
| | | STOCK CODE: 76125082 |

REFORMATTING THE DISK

This menu allows you to reformat the disk and erase all data. Select **Device Tools>Reformat Disk**.

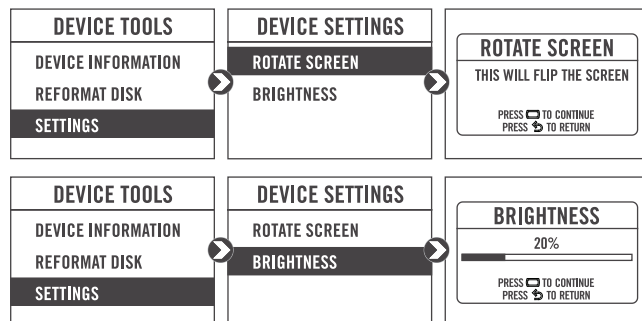


CHANGING THE SETTINGS

This menu allows you to rotate the screen allowing you to change the orientation of the Power Vision device along with adjusting the screen brightness.

Select **Device Tools>Settings>Rotate Screen** to flip the screen.

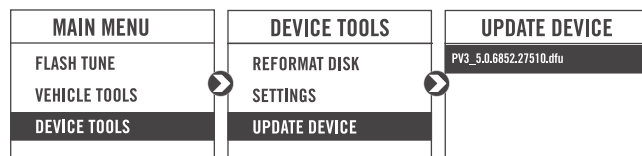
Select **Device Tools>Settings>Brightness** to change the screen brightness.



UPDATING THE DEVICE

This menu allows you to update the device with the latest firmware.

- 1 Go to <http://www.dynojet.com/PowerVision/power-vision-software-firmware-downloads.aspx?ProdType=Power%20Vision%203>.
- 2 Download the Power Vision 3 Firmware for Honda.
- 3 Save the file to your device.
- 4 Select **Device Tools>Update Device**.

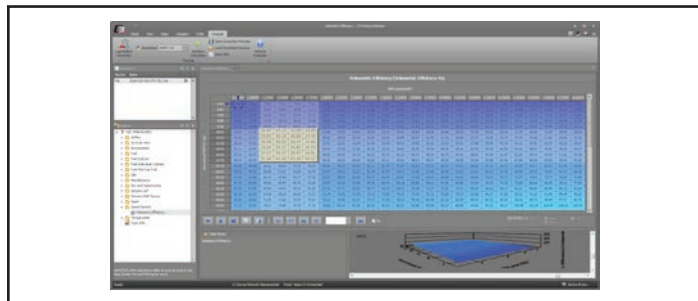


INSTALLING THE POWER CORE SOFTWARE

Download the Power Core software and take tuning to a whole new level.

Note: Downloading the Power Core software is optional and not necessary to use the Power Vision.

- 1 Go to www.dynojet.com/PowerVision.
- 2 From the top navigation menu, select **Support>Downloads**.
- 3 Select **Power Vision CX** from the drop-down menu.
- 4 Download the Dynojet Power Core software.
- 5 Double-click the saved file to begin installation. Follow the on-screen prompts. Refer to the Power Core Help for more information.





PUSH THE LIMIT

**2191 MENDENHALL DRIVE, NORTH LAS VEGAS, NV 89081 - 800-992-4993 - DYNOJET.COM
© 2019 DYNOJET RESEARCH ALL RIGHTS RESERVED**