



Flat Tire Defender – Foam Insert Glue Joint Procedure

FTD recommends watching the 'Glue Joint Procedure' and Installation videos and safety warranty documents at www.flattiredefender.com website before attempting gluing procedure & insert installation

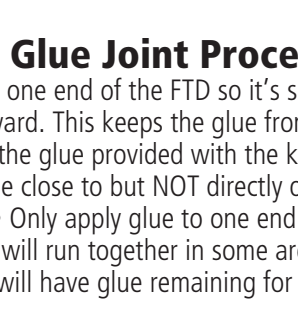
1. FTD Features;

- The insert you purchased is cut to the proper length so no need to trim.
- The Groove Area is designed to fit around the circumference of the rim bed area. This is the area where the valve stem goes, spoke nipples and rim tape.
- The Curved Top area is designed to absorb impact from the tire tread area.
- Foam is closed cell, does not absorb sealant.

CURVED TOP



GROOVE AREA



2. Glue Joint Procedure;

- Hold one end of the FTD so it's surface faces upward. This keeps the glue from running
- Using the glue provided with the kit, place small 'dots' of glue close to but NOT directly on the outer edge.
 - Only apply glue to one end of FTD
- The glue will run together in some areas which is OK. You will have glue remaining for future use.



- Let the glue dry for approximately 30 seconds

- Hold the FTD ends in each hand making sure the foam follows a smooth circle – NOT TWISTED

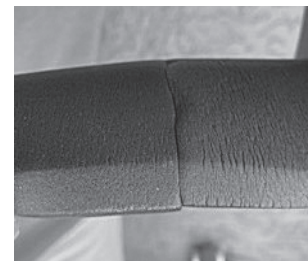
Smooth Circle—Good



Twisted Circle — Not Good



- Line up the shapes & groove so they match and stick the ends together
- With medium pressure, hold for approx. 2-3 minutes.



NOTE: If you experience small areas that did not bond, apply a small amount of glue in those areas, hold pressure until dry. Additional super glue can be purchased at any hardware or department store.

Final Step;

- Allow glue to dry for approx. 1 hour before installation.
- Apply Flat Tire Defender sticker over glue joint area. This helps bond joint together and keeps sealant away from the joint area.

