

# YAMAHA RHINO PLOW MOUNT

Plow Mount

PART # 105265

Hardware Kit: HK-122

## Kit Components:

Qty.	Part Description
1.....	Plow Mount Plate
2.....	Spacer Plate
2.....	Bolt Plate
4.....	3/8"-16 x 3 1/2" Bolt
2.....	3/8"-16 x 1 1/4" Bolt
4.....	3/8" Lock Washer
2.....	3/8" Flanged Lock Nuts

## INSTALLATION INSTRUCTIONS:

1. Place mount plate on machine as shown in Figure 2.
2. While holding mount plate up to machine loosely install bolt plates (A) using 3 1/2" bolts and lock washers as shown in Figure 3.
3. If installing a winch mount or 2" receiver do so now. If not skip to Step 4.

### *Note:*

*If installing a winch mount or 2" receiver refer to the mount specific installation manual. Use spacers (B) provided when installing winch mount and 2" receiver as shown in Figure 4.*

4. Install 1 1/4" bolts (C) using flanged lock nuts as shown in Figure 5.
5. Tighten down all bolts.
6. See UTV Plow Tube System instruction manual for tube attachment.

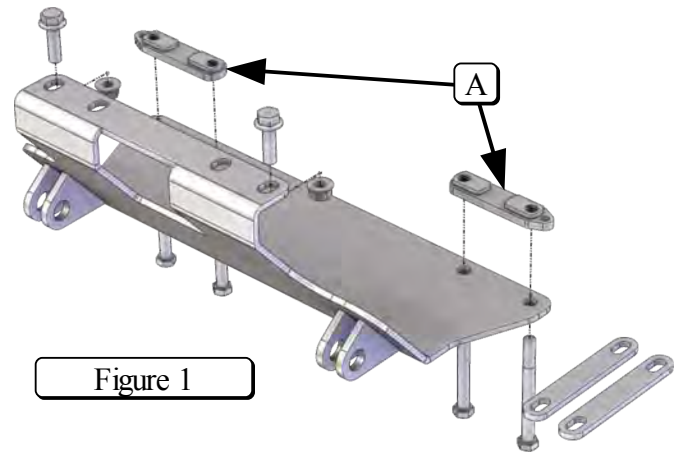


Figure 1

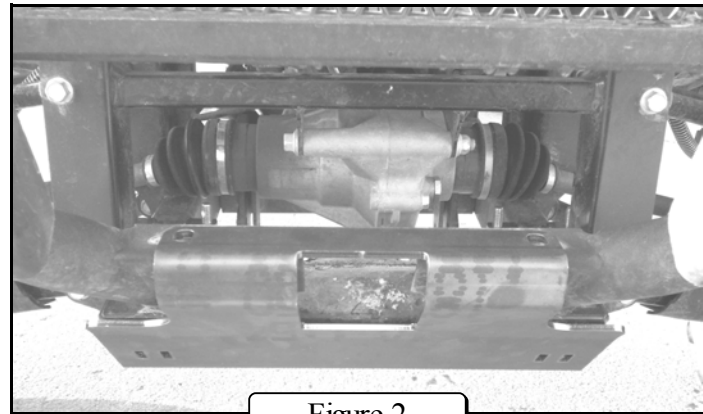


Figure 2

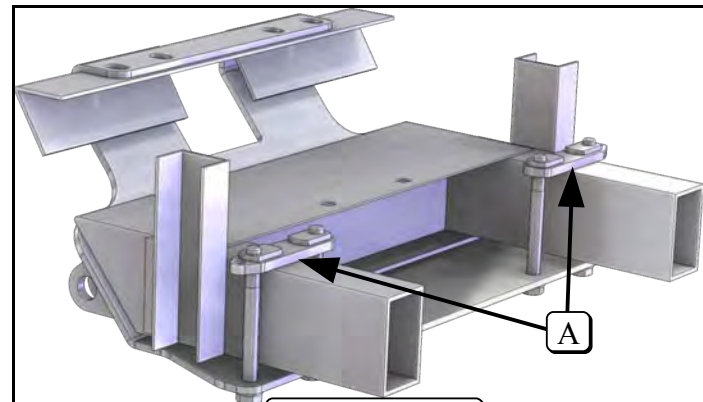


Figure 3

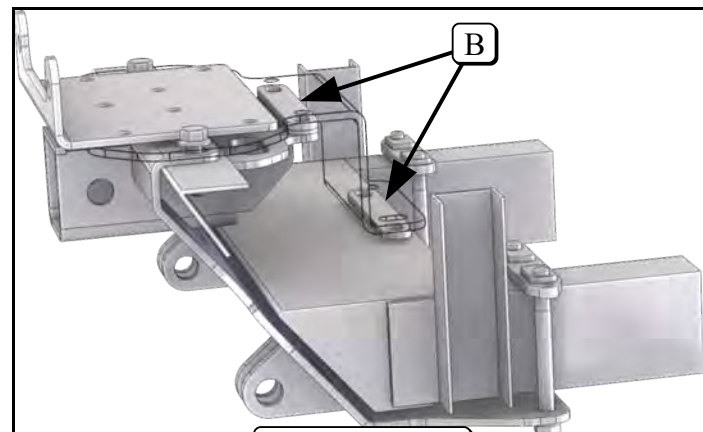
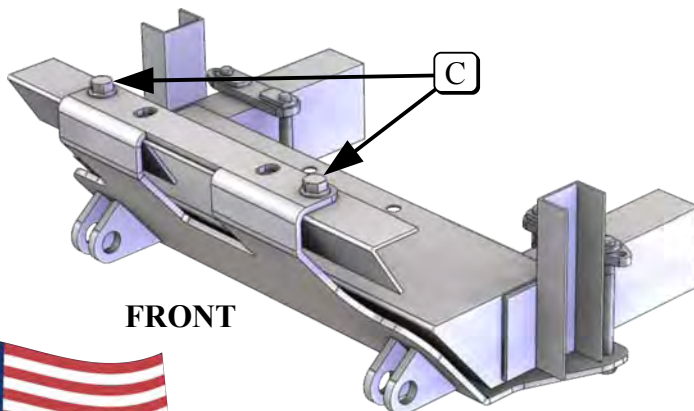


Figure 4



FRONT

Figure 5

