

Arctic Cat Wildcat Trail

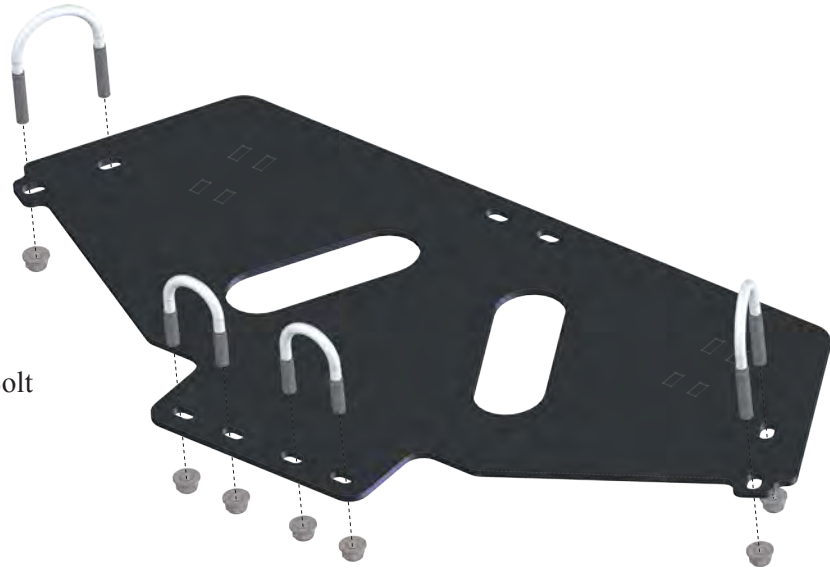
Plow Mount

PART # 105610

Hardware Kit: HK-153

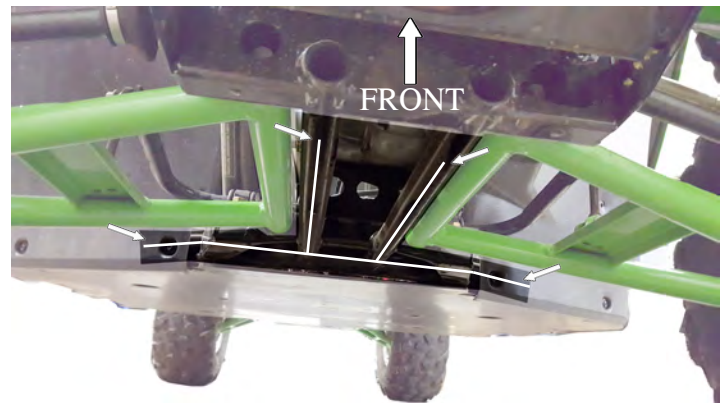
Kit Components:

Qty.	Part Description
1.....	Plow Mount Plate
2.....	5/16"-18 x 1-1/4" x 2" x 1" U-Bolt
2.....	5/16"-18 x 1-7/8" x 2-3/4" x 1-1/2" U-Bolt
8.....	5/16"-18 Hex Flanged Nylok Nut



"Figure 1" Exploded View

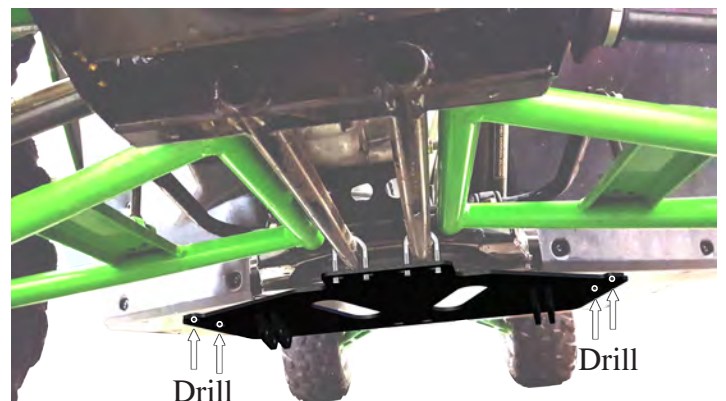
1. Remove the front section of the Skid Plate.
2. Place Mount up to your machine just behind the front A-arms. Loosely attach the two smaller U-Bolts around the frame tubes and through the slots on the front of the mount. Use the mount as a template to mark the locations on the skid plate to drill holes for the rear U-Bolts. (see *Figure 3*)



"Figure 2" Tubes used to attach mount

3. Remove hardware holding the inner floorboards in place and move them out of the way so they do not get damaged when drilling through the skid plate in the next step, and allow space to install U-Bolts.

4. Drill holes through the skid plate and plastic where marked. (see *Figure 3*)



"Figure 3" Mount location/ where to mark for rear U-Bolts

6. The inner fender/ body panel wraps over the skid plate slightly, it will get sandwiched between the mount and skid plate (see *Figure 4*). You can trim this piece if you find it necessary.

7. Thread nuts onto the rear U-Bolts so they are snug.



"Figure 4"

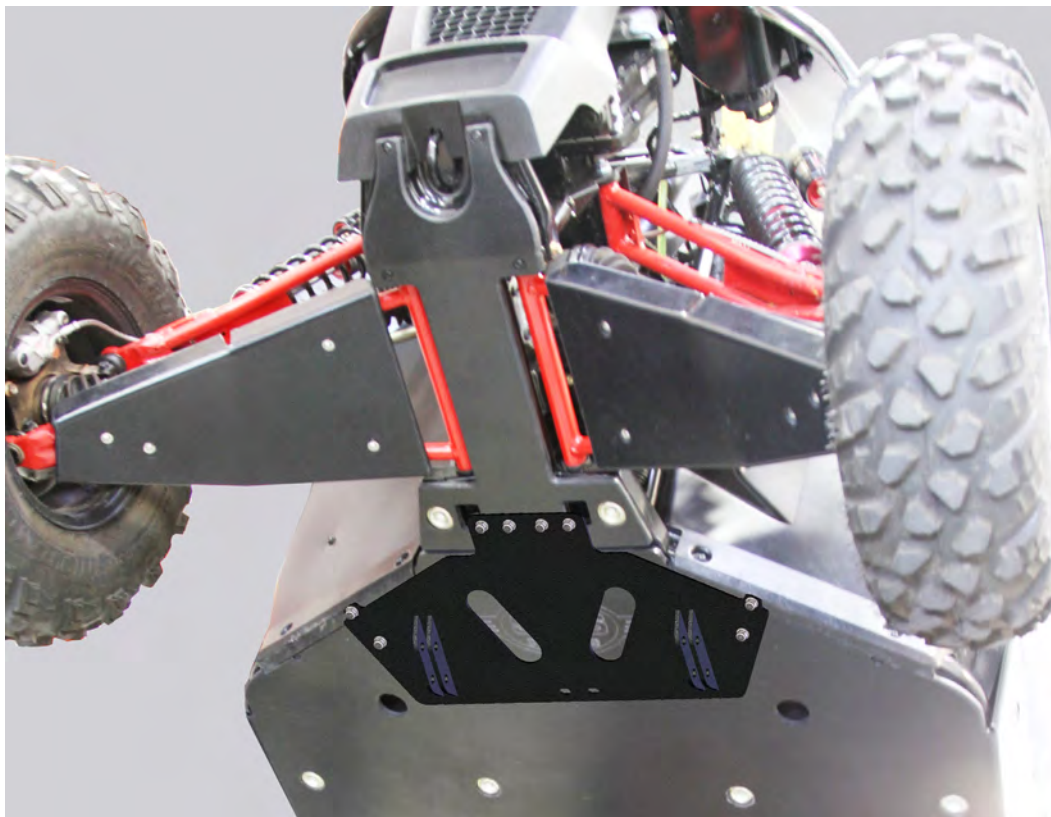
Arctic Cat Wildcat Trail

INSTALLATION INSTRUCTIONS CONTINUED:

8. Remove the front U-Bolts (Attached in step 2) and slide the front Skid Plate under the Plow Mount back to its original location. Re-attach the Skid Plate using hardware removed in step 1.
9. Using the plow mount as a template mark the drill locations on the skid plate and drill the U-Bolt holes.
10. Re-insert the U-Bolts and tighten all hardware evenly.



“Figure 5” *Rear U-Bolt locations (Inner-floor & Skid plate removed to show U-Bolts & mount location)*



“Figure 6” *Mount Installed*

