



SOFTAIL SLIM REAR FENDER FOR 2012+ SOFTAIL SLIM

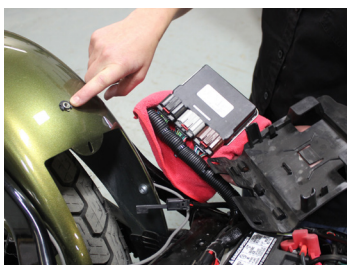
BEFORE YOU START:

If using the frenched fender with Klock Werks's lighted license plate frame, additional parts are needed from Harley-Davidson:
 1 - Standoff (69933-08) // 3 ft. - Fender Conduit (6920018A1)

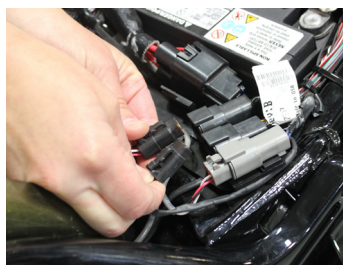
NOTE:

QUESTIONS?

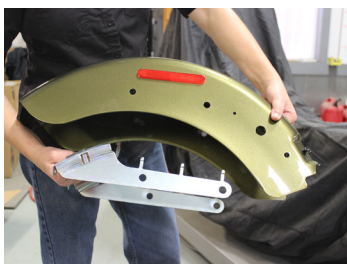
 **EMAIL:**
 info@getklocked.com
 **CALL:** (605) 996.3700



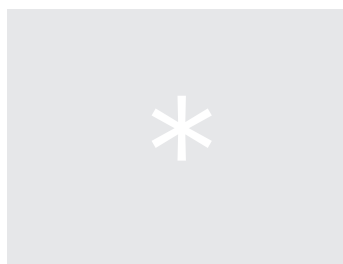
1. Protect painted surfaces
2. Remove stock rear fender
 - a. Remove the seat
 - b. Remove the ECU and ECU tray, but DO NOT unplug the ECU from the harness
 - c. Remove the seat nut



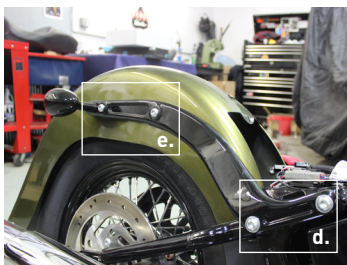
3. Disconnect the left side turn signal/brake light and the license plate light connector under the seat area and remove the terminals from the connector



NOTE: There is an inner fender support and bolt plates that can fall out upon disassembly, take care to remove them slowly. The inner fender support will not be reused.



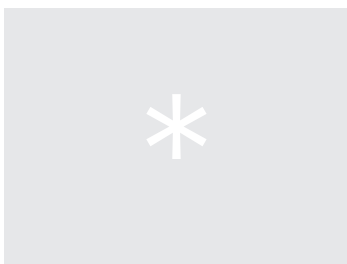
4. Remove the T40 bolt that secures the left side turn/brake light and side mount plate to the strut and pull wires all the way through



- d. Loosen, but do not remove, the four T45 fasteners that attach the strut to the frame
- e. Remove the four fender fasteners to remove the fender

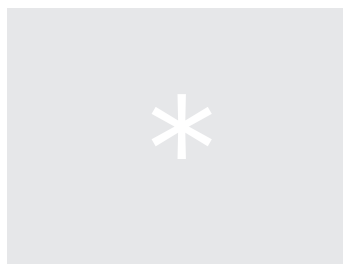


5. Separate the turn signal from the side mount plate and replace the plate with a new Harley Davidson turn signal standoff (part number 69933-08)



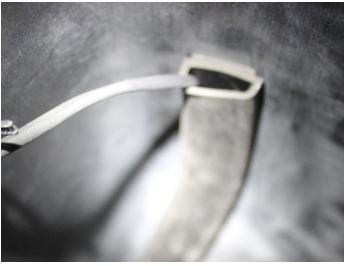
If you have a smooth rear fender, go ahead and install your Klock Werks Fender and torque to factory specification.

If you have a frenched rear fender, proceed to step 3.



6. Run left side light wiring back up to its original location and secure the standoff and light back onto the strut

INSTRUCTION SHEET



7. Install the rear fender conduit (Harley part number 6920018A1, quantity needed - 3 feet) under the right side of your new Klock Werks rear fender



9. Install your Klock Werks lighted license plate frame
 - a. Cut the small black connector off of the license plate wiring
 - b. Solder a length of the side mount plate harness to the license plate wires to make them long enough to reach the connector under the seat
 - c. Run the wires through the conduit and secure the plate frame with the supplied hardware
8. Install your new Klock Werks rear fender and torque to factory specifications
9. Reassemble the license plate light connector and check light function
10. Reinstall seat nut, ECU tray and ECU.
11. Reinstall the seat

CAUTION: Klock Werks cannot be held responsible for any damage to painted surfaces during removal or addition of Klock Werks parts.