

FLARE™ WINDSHIELDS



VISIT **KLOCKWERKS1** ON YouTube
FOR Flare™ INFORMATION, INSTALLATION
INSTRUCTIONS, AND MORE!

FLARE™ WINDSHIELDS

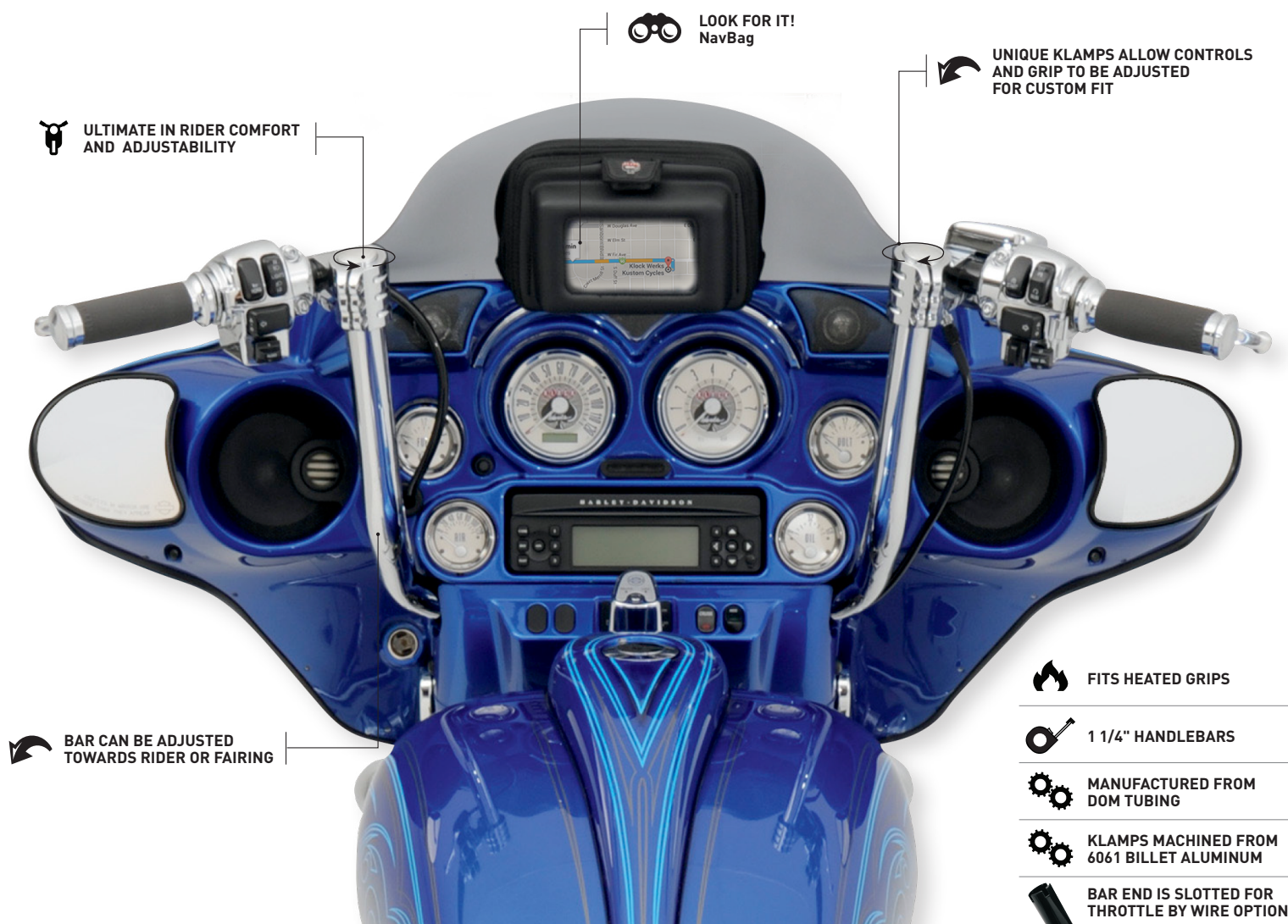
The **Flare™ Windshield** was developed at Klock Werks out of a desire and need for stability at highway speeds and for racing on the Bonneville Salt Flats. The Flare™ is the ORIGINAL windshield of its kind, and has surprised riders everywhere with not only how great it looks, but also with how well it performs. The innovative design features "hips" at the outer edge of the shield that re-route the air to add downforce to the front of the bike. This creates stability superior to riding with a stock shield. The "flip" at the top of the Flare™ is designed to kick the air up and back as "clean", less turbulent air for the rider and passenger. Made from hard-coated polycarbonate material for added durability. Made in the USA.

TRY IT BEFORE YOU BUY IT!

The Try-It Before You Buy It program is available for you to test ride the Flare™. To find a dealer near you that offers the program, check out our Dealer Locator found on kustombaggers.com. If your dealer is not part of the program, ask them to contact us at (605) 996-3700.

Watch for the Try-It program at an event near you!

KLIPHANGER BARS



KLIPHANGER HANDLEBARS

THE ULTIMATE IN RIDER COMFORT AND ADJUSTABILITY.

No two riders are the same. Klock Werks innovative, machined “Klamps” allow the control/grip portion of the KlipHanger Handlebar to be positioned exactly where you want your wrists to be, and then are locked into place with the same technology used with clip-on race bars. The manufactured bar portions are 1” and 1-1/4” DOM tubing, drilled/slotted for internal wiring, and work with heated grips. Bars are offered in several heights to fit a wide range of preferred riding positions and come in chrome and black combinations. KlipHangers truly are the ultimate in personal choice! Chrome hardware, chrome billet aluminum dome bar end caps, and complete installation instructions included.



BLACK | CHROME



BLACK | BLACK



CHROME | CHROME



ERGO BARS



ACHIEVE ERGONOMICALLY
CORRECT WRIST POSITION



AVAILABLE IN 3 STYLES FOR
PREFERRED RIDING POSITION



FITS HEATED GRIPS



1 1/4" HANDLEBARS



MANUFACTURED FROM
DOM TUBING



BAR END IS SLOTTED FOR
THROTTLE BY WIRE OPTION

ERGO BARS

FOR A MORE RELAXED AND COMFORTABLE WRIST POSITION.

Ergonomically correct wrist position not only reduces stress to your wrists, but may help reduce that pinched feeling between your shoulder blades after a day of riding! Klock Werks ERGO Bars are offered in three different styles to cover a large range of riders and preferred riding positions. ERGO bar options are designed specifically to adjust your wrist to a more natural relaxed position, vs. riding with stock bars. ERGO bars accept stock controls/housings, and are predrilled and slotted for internal wiring. They are designed to work with stock length cables, wires and heated grips.*

*NOTE: For easier installation of 2014+ Ergo Bars, Klock Werks recommends a wire extension kit. Drag Specialties Part #: 2120-0368.

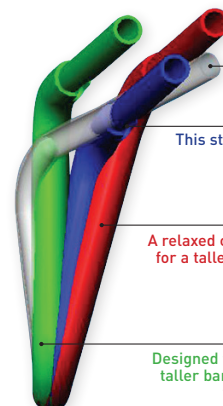
THE DIFFERENCE IN WRIST POSITION

Ergo Bars have been designed specifically to have a more relaxed, comfortable wrist position.



THE DIFFERENCES IN HEIGHTS

Various heights have been designed to fit every riding style.



STOCK BARS

STANDARD BARS

This style is close to stock bar height with a more relaxed wrist position and sportier stance.

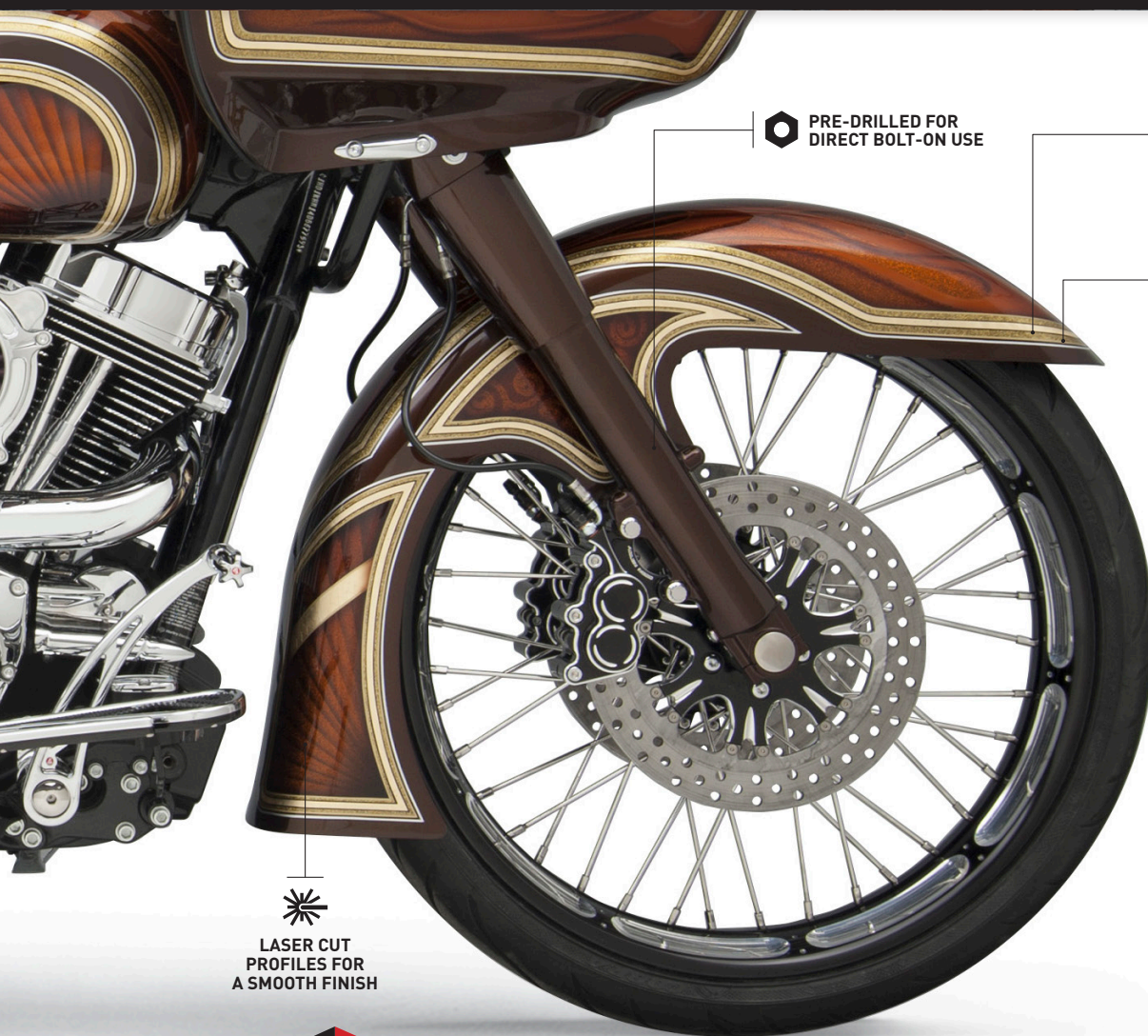
BACK BARS

A relaxed cruiser model, perfect for the shorter rider or even for a taller rider wanting to kick back. They allow for a more relaxed seating position.

UP BARS

Designed for the taller torso rider or someone who prefers a taller bar. Hand position is higher and closer to fairing, with your arms almost level rather than reaching down.

FRONT FENDERS



PRE-DRILLED FOR
DIRECT BOLT-ON USE



STAMPED
STEEL



E-COATED TO PREVENT
RUST AND CORROSION



LASER CUT
PROFILES FOR
A SMOOTH FINISH



PRECISION, DEEP-DRAW
STAMPING TECHNOLOGY



When you buy a fender from Klock Werks, you can count on quality and accurate bolt-on fitment. To make installation even easier, some of our fenders are packaged with mounting blocks and hardware in one box. Look for the FIT KIT logo!

In the **FRONT FENDER FIT KITS** we include:

- 1 Stamped Steel Front Fender
- 2 Chrome Billet Aluminum Mounting Blocks
- 3 All Necessary Hardware



SOME FRONT FENDER INSTALLATION REQUIRES USE OF MOUNTING BLOCKS. IF YOU ARE NOT BUYING A FIT KIT, MAKE SURE YOU HAVE THE RIGHT MOUNTING BLOCKS.

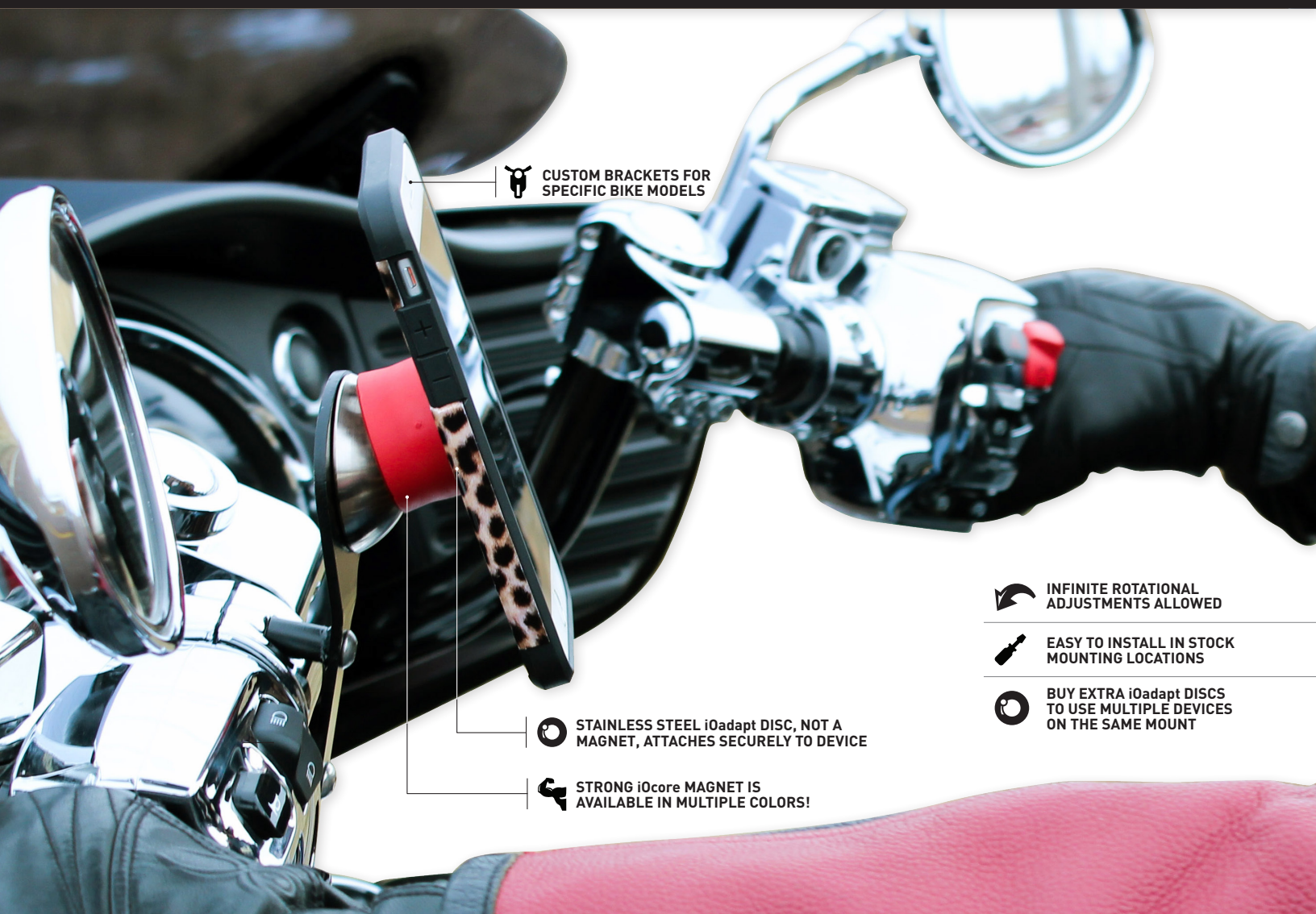
STAMPED STEEL FRONT FENDERS

Changing your front fender is an easy way to add some personal style! The Klock Werks design team has put together great options ranging from traditional bagger style, to tire hugging options, to one-piece front fenders for big wheel bagger projects.

All of Klock Werks Front Fenders are stamped from 14 gauge steel using precision, deep-draw stamping technology that ensures a consistently smooth and flawless finish, minimizing bodywork. Laser cut using 5-axis laser technology to ensure accurate fitment for direct bolt-on installation. Klock Werks then goes the extra mile to add e-coat, a process to prevent rust and corrosion. Painters love Klock Werks Fenders and you will too!

Klock Werks FRONT FENDER MOUNTING BLOCKS (Klock Blocks) are designed to provide perfect spacing for easy installation of any Klock Werks Front Fender. Machined from billet aluminum, available in chrome or raw finish, and are sold in pairs. If you are not buying a Front Fender Fit Kit, be sure you order blocks. Sold separately. Call with questions.

DEVICE MOUNTS



CUSTOM BRACKETS FOR
SPECIFIC BIKE MODELS



STAINLESS STEEL iOadapt DISC, NOT A
MAGNET, ATTACHES SECURELY TO DEVICE



STRONG iOcore MAGNET IS
AVAILABLE IN MULTIPLE COLORS!



INFINITE ROTATIONAL
ADJUSTMENTS ALLOWED



EASY TO INSTALL IN STOCK
MOUNTING LOCATIONS



BUY EXTRA iOadapt DISCS
TO USE MULTIPLE DEVICES
ON THE SAME MOUNT

KLOCK WERKS DEVICE MOUNTS powered by **iOmounts™**

Klock Werks has designed easy to install, motorcycle model specific mounts that incorporate the iOmounts™ system! You simply install the mount to your bike with included hardware, attach the razor-thin iOadapt stainless steel adaptor to your device, and instantly connect to the powerful iOcore magnetic carrier. No special case needed!

It's a simple, secure, universal system, and when you're done riding, remove your device and connect seamlessly to other Klock Werks powered by iOmounts™ products, including device mounts for your quad, dirt bike, car, home, office and more! Enjoy infinite rotational adjustment, sleek modern design, and it's forward compatible. If you upgrade to a new phone or GPS, you don't have to buy a new mounting system! Plus you can purchase additional iOadapt disks to use multiple devices on the same mount. It's quite possibly the best device mounting system on the market.



1. The iOadapt, a razor-thin (0.025") stainless steel adaptor, adheres to your device.

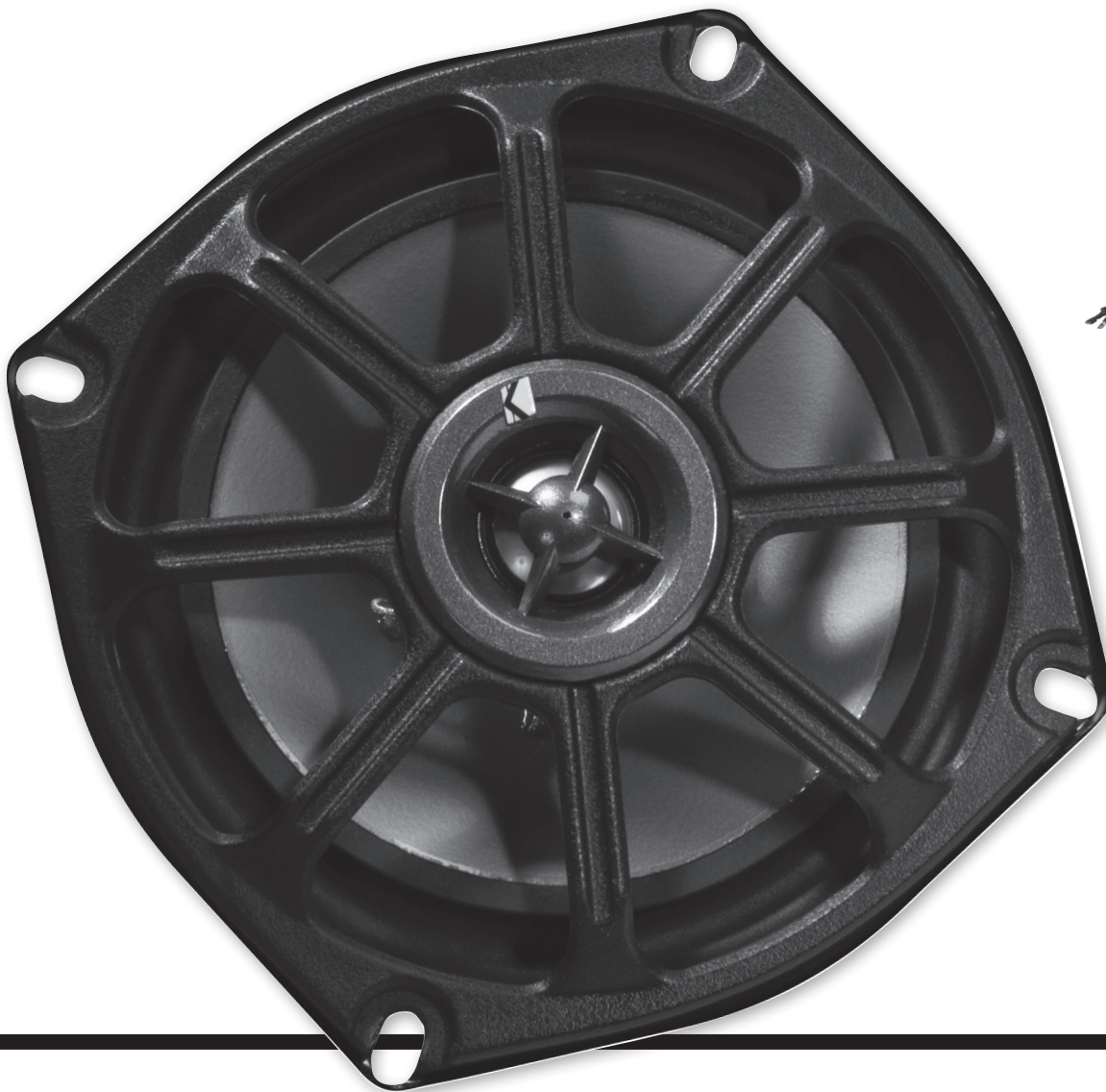


2. The magnetic iOcore is then connected to the kustom mount, and is ready to hold your device.



3. Your device is held securely in place by the strong iOcore magnet, and you can adjust the angle of your device.

KICKER AUDIO



KLOCK WERKS + KICKER AUDIO FIT KITS

KICKER Performance Audio and Klock Werks Kustom Cycles have teamed up to bring riders the clearest and loudest audio equipment available, specifically designed and tuned for power sports applications!

The FIT KIT includes speakers that fit into factory openings. The small footprint Amp mounts inconspicuously using the provided custom stainless steel bracket. The custom wiring harness offers 100% Plug-N-Play installation, and the FIT KIT also includes all necessary hardware and instructions. There is no need to cut wiring or chop up your fairing or trunk. Everything you need is included!



**KW + KICKER FIT
KITS INCLUDE:**

- 1** 5 1/4" Kicker Speaker Pair
- 2** Kicker Amp 100W/50W
- 3** Stainless Steel Mounting Bracket
- 4** Custom Wiring Harness
- 5** Step-by-Step Installation Guide
- 6** All Necessary Hardware