



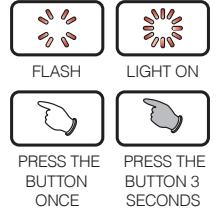
● Thank you for purchasing KOSO **MX-1 heated grips**. Before installation, please read the instructions carefully and retain them for future reference.

Attention!

- For installation, follow the steps on the instruction sheet. Any damage caused by faulty installation shall be imputed to the users.
- Do not break or modify the wires. To avoid a short circuit, do not pull the wires out of the terminals during installation.
- Do not disassemble, alter or change any parts.
- Maintenance or repairs should be executed by a certified Koso technician.

○ MARK MEANING:

- ⚠ Procedures must be followed to avoid damages occurring to the instrument.
- WARNING!** Procedures must be followed to avoid injuries to the user or others.
- CAUTION!** Procedures must be followed to avoid damages to the vehicle.
- READ CAREFULLY!** If any information in the manual remains unclear, seek professional assistance.



1 Accessories

1 Heated grip X2 	2 G switch X1 	3 Connecting wire X1 	4 Lower Clamp X1 	5 Lower Clamp 1" X1
6 Lower Clamp 1 1/8" X1 	7 Locking Mount X1 	8 M2X8 screw X2 	9 M3XP0.5X25L screw X1 	10 M3 nut X1
11 Bar-end cap X2 	12 Throttle Adaptor Spacer X1 	13 Throttle Adaptor-1 X1 	14 Throttle Adaptor-2 X1 	15 Throttle Adaptor-3 X1
16 Throttle Adaptor-4 X1 	17 Throttle Adaptor-5 X1 			

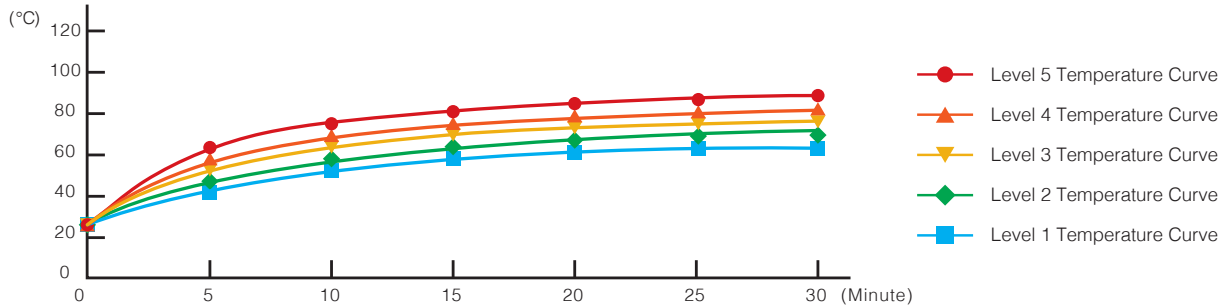
NOTE Contact your local distributor if the items received in the box are not the same as the items listed above.

2-1 Specifications

- Heating stage: 1st stage (low) ~ 5th stage (high)
- Fuse type: 4A (ASP)
- Effective temperature range: JIS D 0203
- Voltage: DC 12 V
- Switch size: W38.2 X L38.2 X H16.5 mm
- Switch weight (with wire): About 88 g

NOTE Design and specifications are subject to change without notice!

2-2 Heated grips testing data

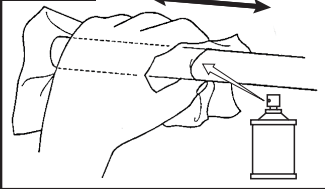


NOTE The testing environment is under 26 Degrees Celsius, with working voltage of 13.5 V.

3-1 Installation instructions

Heated grips installation procedure

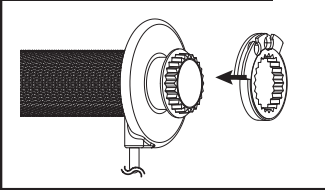
Figure 1



1. Use appropriate tools to remove the original handlebar grips.

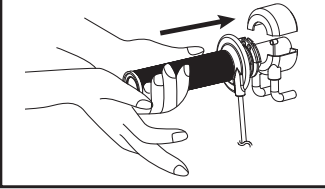
2. Apply a cleaning agent, wipe back and forth to remove glue residue from the handlebar.

Figure 2 (Right Hand Grip)



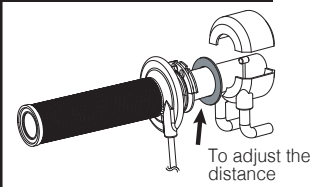
3. Use appropriate throttle adaptor (Accessory 13~17), and install the throttle adaptor according to the correct angle of the bike.

Figure 3 (Right Hand Grip)



4. Insert throttle adaptor as well as grip to right hand handlebar.

Figure 4 (Right Hand Grip)

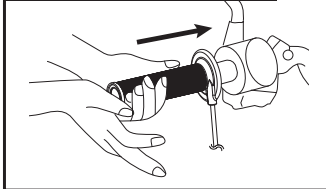


CAUTION!

When throttle have too much space left, then please use the spacer (Accessory 12) to adjust the space.

Use Allen key to tighten grips to handlebars.

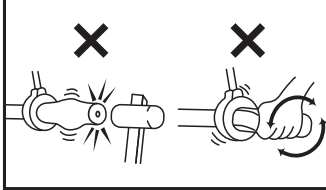
Figure 5 (Left Hand Grip)



5. Please reverse the disassemble order to install the grip back on.

Insert left hand grip onto left hand handlebar.

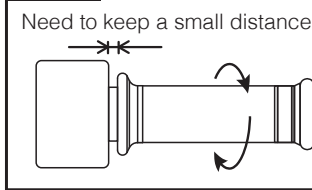
Figure 6



CAUTION!

To install, do not use a tool to knock the grip on. Do not twist the grip by hand or with a tool. By doing so, this will break or damage the wires inside the handlebar.

Figure 7



CAUTION!

To install the heated grip onto the throttle sleeve, the throttle must maintain a small distance with a surplus distance for wiring; You must test them by rotating back and forth to make sure they can twist.

Figure 8

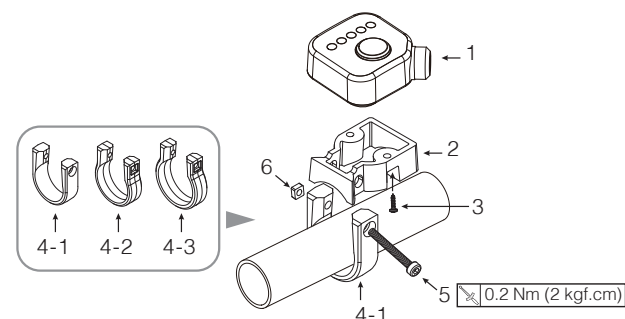


6. Install the end cap on the heated grips.

CAUTION!

When the end caps are installed, then the heated grips could have 125mm length inside the grips; when there is no end cap installed then the heated grips could have 130mm length inside.

3-2 Control box installation instructions



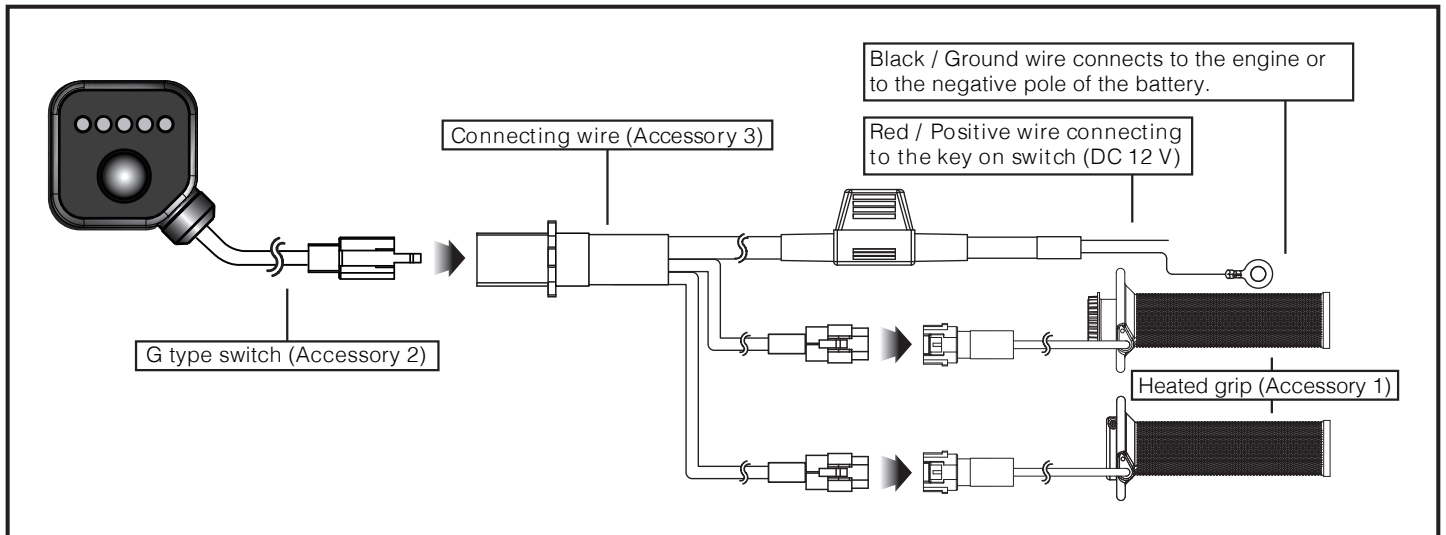
Installation steps

1. G switch (Accessory 2)
2. Locking Mount (Accessory 7)
3. M2X8 screw (Accessory 8)
- 4-1. Lower Clamp (Accessory 4)
- 4-2. Lower Clamp 1" (Accessory 5)
- 4-3. Lower Clamp 1 1/8" (Accessory 6)
5. M3XP0.5X25L screw (Accessory 9)
6. M3 nut (Accessory 10)

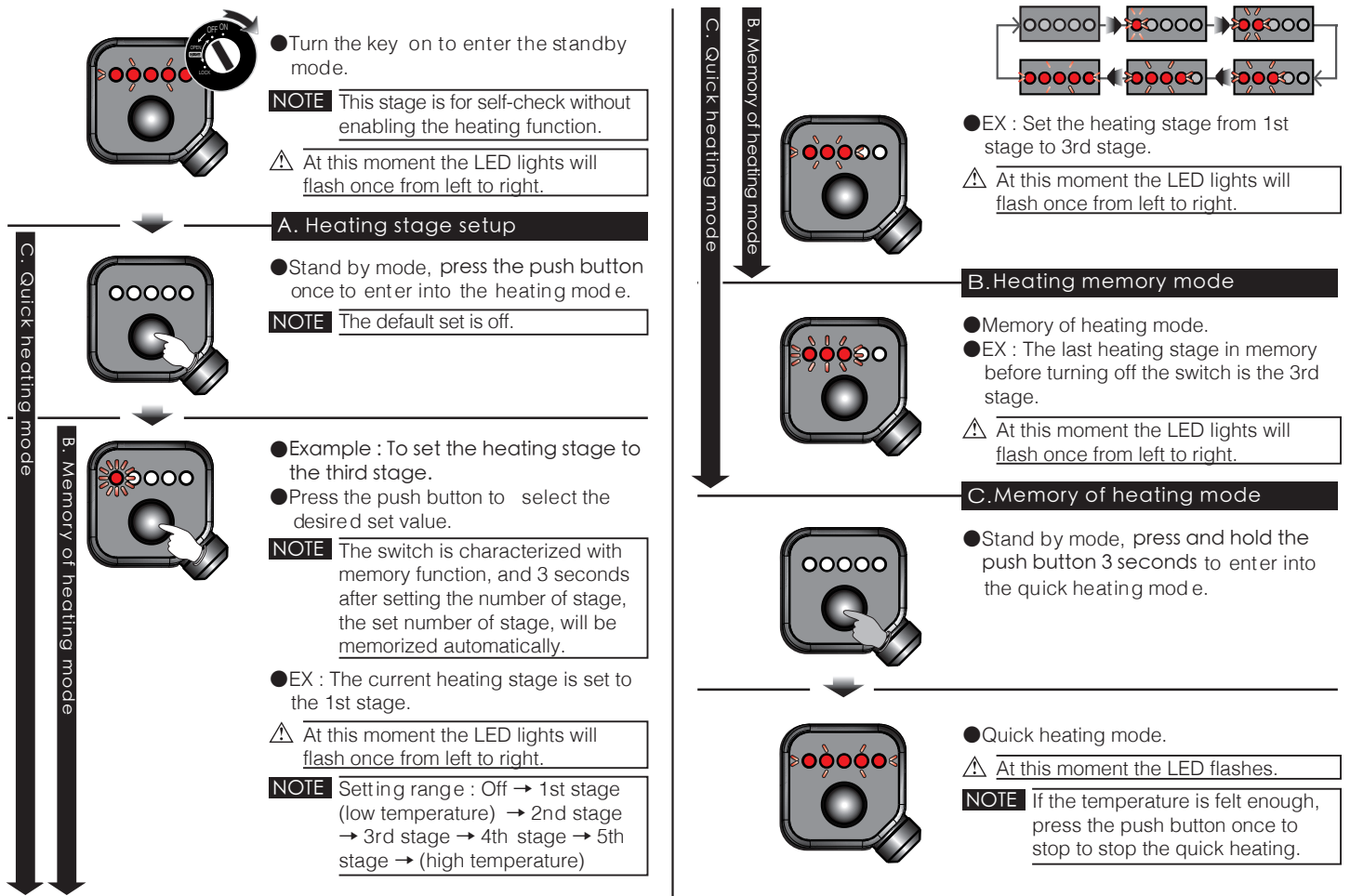
Please use the suitable clamp according to your handlebar size.

0.2 Nm (2 kgf.cm)

3-3 Wiring installation instructions



4-1 Specifications



4-2 Low-voltage mode Description



- The heating system will be turned off automatically when the voltage is lower than 11.5 V.
- ⚠ At this moment, LED flashes.
- Stand by mode will be enabled when the voltage over 11.5 V is restored.

5 Troubleshooting

The following situations do not indicate malfunctions of the grips. Please check the following before seeking assistance.

Trouble	Check item
LED indication does not activate.	<ul style="list-style-type: none"> ● Power supply cable disconnected. → Please check if power supply cable is broken or disconnected. → Please check if positive and negative poles are properly connected. ● It might be caused by the setting is not properly set up. → Please make sure and double check if setting is under the idle mode.

Trouble	Check item
Grips are not heating up.	<ul style="list-style-type: none"> ● It might be the battery is running out. → Please make sure and double check if setting is under the idle mode. ● It might be caused by no power supply. → Please check if power harness and fuse are broken or disconnected. → Please check if positive pole and negative pole is well connected. ● It might be caused by improper set up. → Please check if all function set up is properly proceeded. → Please refer to 6. → Specification and check with each step.

※ If still can't solve the problems according to the step above, please contact with distributors or us.