



◦ Thank you for purchasing the **KOSO Turbo / Boost Gauge**. Before operating the unit, please read carefully the instruction and retain it for the future reference.

⚠ Notice

- 1.The meter works for AC/DC 12V power.
- 2.For installation, please follow the steps described in manual. Any damage caused by wrong installation shall be imputed to the users.
- 3.Don't break or modify the wire terminal. To avoid a short circuit, do not pull the wires when installing.
- 4.Do not disassemble or change any parts.
- 5.The interior examination or maintenance of the instrument should be executed by our professionals only. Opening the instrument will void the warranty.
- 6.While riding the vehicle, do not attend to change the setting of the instrument to avoid injuries to yourself or others.

MARK MEANING:

⚠ Some procedures must be followed to avoid damage to the instrument.

⚠ **WARNING!** Some procedures must be followed to avoid injuries to yourself or others.

⚠ **CAUTION!** Some procedures must be followed to avoid damages to the vehicle.


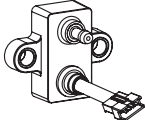

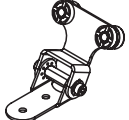



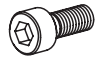






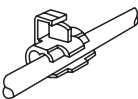


Press the
button one
time



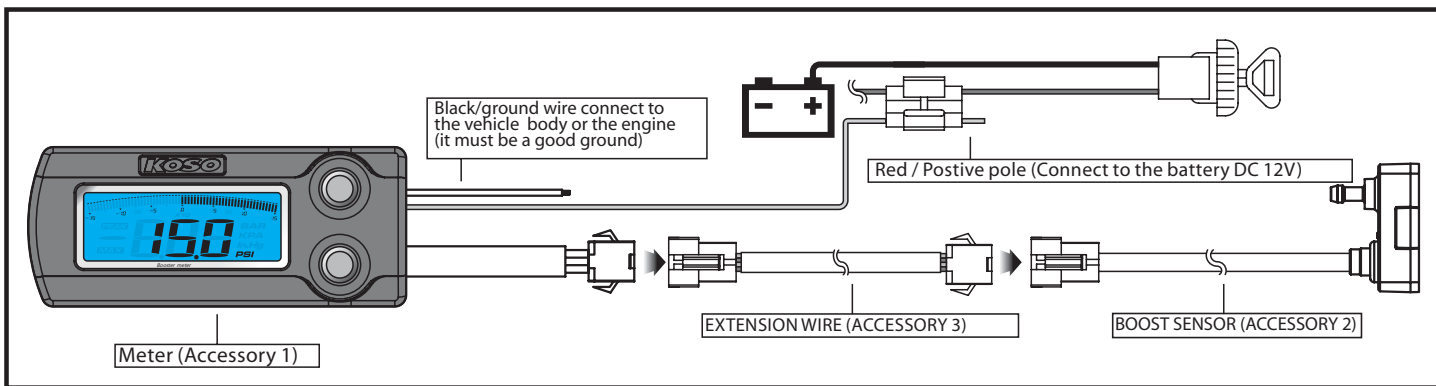
Press the
button
3 seconds

1-1 Accessory

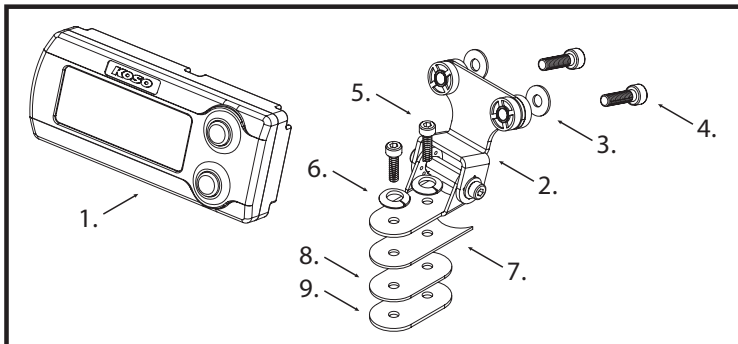
1 METER X1 	2 BOOST SENSOR X1 	3 EXTENSION WIRE X1 	4 METER BRACKET X1 
5 Rubber X 1 	6 Rubber X 1 	7 Steel gasket X 1 	8 M5X18L SCREW X2 
9 M4X12L SCREW X2 	10 M5 washer X2 	11 M4 gasket X2 	12 M5 gasket X2 
13 3mm Allen Key X1 	14 4mm Allen key X1 	16 Connection terminal X2 	

NOTE Please contact the local distributor if the items listed are not the same.

2-1 Wiring installation instructions



2-2 Installation instructions



When installing, please follow the steps below.

1. LCD meter (Accessory 1)
2. METER BRACKET (Accessory 4)
3. M5 gasket X 2 (Accessory 10)
4. M5 X 18L screw X 2 (Accessory 8)
5. M4 X 12L screw X 2 (Accessory 9)
6. M4 gasket X 2 (Accessory 11)
7. Rubber (Accessory 5)
8. Rubber (Accessory 6)
9. Steel gasket (Accessory 7)

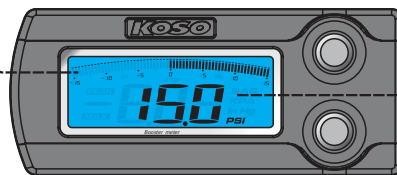
3-1 Description of basic functions

Boost Pressure scale (15PSI)

- Display range: 0~15PSI
- Display unit: 0.5 PSI

Boost Pressure scale (30PSI)

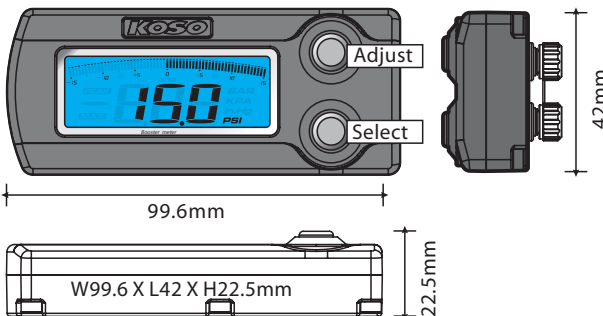
- Display range: 0~30PSI display range
- Display unit: 1 PSI



Boost Pressure digital display

- Display range: 0~30PSI, will blink to warn at overrange.
- Display unit: 0.5 PSI

3-2 Description of basic functions



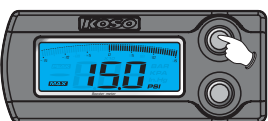
◦ Boost Pressure digital display	Display range: 0~30PSI, will blink to warn at overrange. Display unit: 0.5 PSI
◦ Boost Pressure scale	Display range: 0~15PSI Display unit: 0.5 PSI Display range: 0~30PSI Display unit: 1 PSI
◦ Power required	AC/DC 12V
◦ Unit body using temperature range	-10~+60°C
◦ Unit body specification	JIS D 0203 (S2)
◦ Unit body dimension	W99.6 X L42 X H22.5mm
◦ Unit body weight	85g approximately

NOTE Design and specifications are subject to change without notice!

4-1 Adjust Button



- In the boost screen, press the Adjust button once to enter into the Highest Positive Pressure screen.
- Press & hold the Adjust button for 3 seconds or the Select button for 3 seconds to switch over the stepwise display and the pressure display range.



- In the Highest Positive Pressure screen, press the Adjust key once to return the boost screen.



- Boost screen

4-2 Select button



- In the boost screen, press Select button once to enter into the Highest Negative Pressure screen.

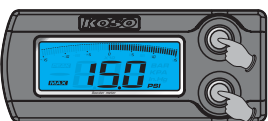


- In the boost screen, press Select button once to enter into the Highest Negative Pressure screen.



- Boost screen

4-3 Adjust and Select button x 3 second switchover




- In the Highest Pressure screen, press & hold the Adjust + Select key for 3 seconds to clear the highest pressure record.



5 Troubleshooting

If you encounter operational failure, please check the following steps. If the problem still occur, please contact your KOSO dealer.

Symptom	Cause/check	Symptom	Cause/check
No display on screen	<ul style="list-style-type: none">◦ Probably the power supply signal line was not well connected.	No display 	<ul style="list-style-type: none">◦ Check if the pressure sensor is disconnected or disengaged.