

Thanks for purchasing our GP style speedometer. Before operating this unit, please read carefully the instruction sheet and retain it for future reference.

Notice

1. The meter works on DC 12 volts applications only.
2. For proper installation, please follow the steps described in the instruction. Any damages caused by wrong installation shall be imputed to the users.
3. Don't break or modify the wire terminals. To avoid any short circuit, do not pull the wires out of the terminal when installing.
4. Do not disassemble or change any parts.
5. Opening the instrument will void any warranty. Maintenance or repair should be executed by our professionals only.

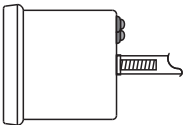




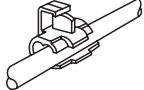
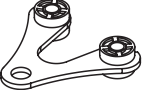
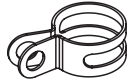







MARK MEANING:


 PRESS THE
BUTTON ONCE


 PRESS THE
BUTTON 3 SECONDS

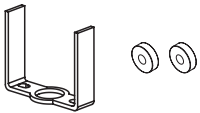
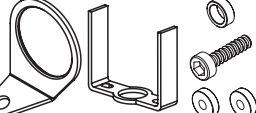



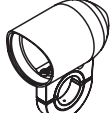

- ⚠** Some procedures must be followed to avoid damages to the instrument.
- ⚠ WARNING!** Some procedures must be followed to avoid injuries to the user or others.
- ⚠ CAUTION!** Some procedures must be followed to avoid damages to the vehicle.

1-1 ACCESSORIES

1 Meter X 1 	2 3.5 mm connector cover X 8 	3 3.5 mm connector X 8 	4 Wire set X 6 
5 Extension button X 1 	6 Mid-way connector X 6 	7 Meter bracket X 1 	8 Handle bar clamp X 1 
9 Rubber X 1 	10 M6 X 18L screw X 1 	11 M5 X P0.8 nut X 2 	12 M6 X P1.0 nut X 1 
13 M5 washer X 2 	14 M6 washer X 1 	15 Aluminum bushing X 1 	

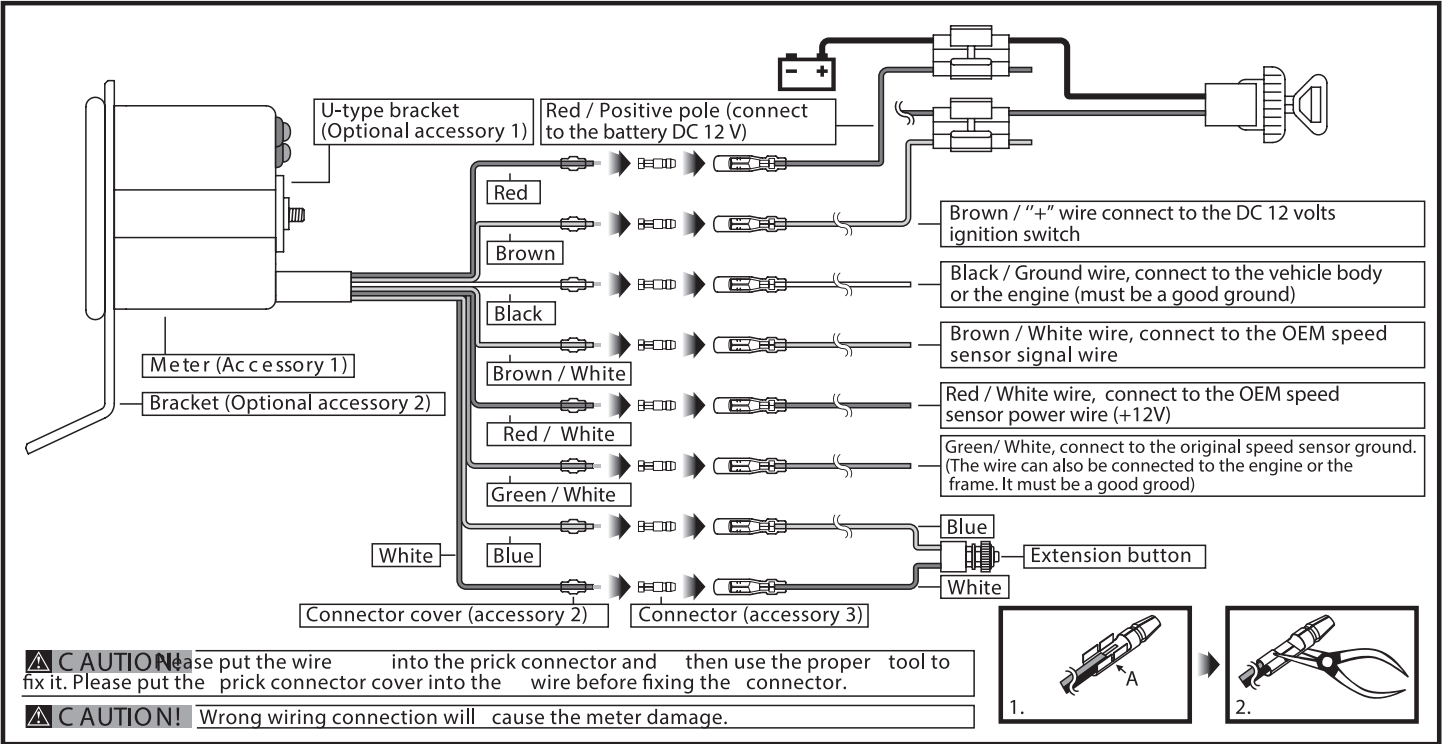
NOTE Please contact your local distributor if the items received are not the same as the one listed above.

1-2 Optional accessories

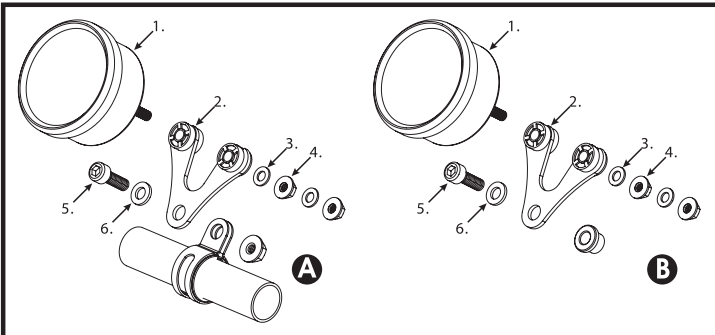
1 U-type meter bracket 	2 Mirror hole meter bracket 	3 Universal adhesive bracket 	4 7/8" bracket 
5 1" bracket 	6 1 1/4" bracket 	7 1 1/2" bracket 	

NOTE Some of the optional accessories might not be available in your country. Contact your local distributor to get more details.

2-1 Wiring installation instruction



2-2 Installation instruction



When installing, please follow the steps below.

1. Meter (Accessory 1)
 2. Meter bracket (Accessory 7)
 3. M5 washer X 2 (Accessory 13)
 4. M5 X P0.8 nut X 2 (Accessory 11)
 5. M6 X P1.0 screw (Accessory 12)
 6. M6 washer (Accessory 14)
- A** Use the meter bracket (Accessory 7), handle bar clamp (Accessory 8), rubber (Accessory 9) and the nut to install the speedometer on the handle bar.
- B** Use the aluminum bushing (Accessory 15) to install the speedometer on the handle bar stem.

3-1 Overview

Speedometer

- Display range: 0~140 MPH.
- Display unit: MPH.

Odometer

- Display range: 0~99999 miles, reset after 99999 miles.
- Display unit: 1 mile.

Trip meter

- Display range: 0~999.9 miles, reset after 999.9 miles.
- Display unit: 0.1 mile.

Adjust button

- In the main screen, press the Adjust button to choose the display of odometer or trip meter.

Reset the trip meter

- In the trip screen, press the Adjust button for 3 seconds to reset the trip meter.

140 MPH

42 mm

18 mm

55 mm

61 mm

Select button

Adjust button

Extension button (Adjust button)

3-2 Specifications

●Speedometer	Display range: 0~140 MPH Display unit: MPH	reset after 999.9 miles. Display unit: 0.1 mile.
○Display internal	<0.5 second	
○Odometer	Display range: 0~99999 miles reset after 99999 miles. Display unit: 1 mile.	
○Trip	Display range: 0~999.9 miles	
●Effective voltage	DC12V	
●Effective temperature range	-10~+60 °C	
●Meter standard	JIS D 0203	
●Meter size	D55 X 57 mm	
●Meter weight	Around 190 g	

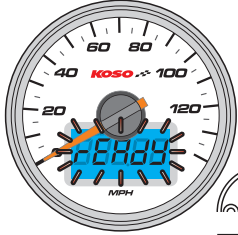
NOTE Design and specifications are subject to change without notice!

4 Operation



In the main screen (odometer is displayed), press the Adjust button for 3 seconds to enter the speed setting function.

CAUTION!
The motorcycle must be stopped in order to enter this function.



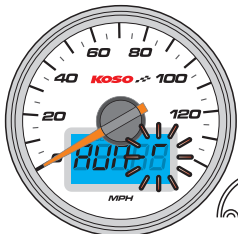
The meter will start analysing once the motorcycle start to move forward.

⚠ The *READY* symbol will start flashing



PS. *Try it!*

The meter will start analysing once the bike move. Once the motorcycle reach 1 mile, stop completely the motorcycle and press the adjust button for 3 seconds.



⚠ The LCD will show *READY* moving symbole during the analysing session.

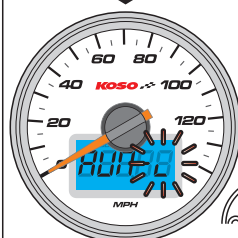


PS. *Try it!*

During the analysing session, presse the adjust button once to stop the session. The screen will display "ABORT" and flash 3 times.

PS. *Try it!*

If the driving distance is too long, the screen will display "Over" and flash. In this case, press the Adjust button once to stop anlysing and return to the main screen.

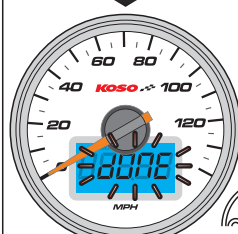


When the distance reach 1mile, press the adjust button for 3 seconds to stop analysing.



PS. *Try it!*

If the driving distance is too short, the screen will display "ERROR" and flash 3 times before returning to the main screen.



The setting is done.
⚠ The *DONE* symbole will flash 3 times.



Back to main screen.



5 Trouble shooting

If any problem occur, please check the following points.

Trouble	Verification points	Trouble	Verification points
The meter doesn't work when the power is on.	<ul style="list-style-type: none"> ● Power is not supplied properly to the meter. → Make sure the wires are connected correctly and the fuse is not broken. → The battery is too old or does not supply enough power (DC 12V) for the meter to work. 	The odometer and trip meter doesn't register the data properly.	<ul style="list-style-type: none"> ● The positive wire might not be install properly. → Check if the red wire is properly connected to the permanent power or the battery. The brown positive wire must be connected to the positive pole of the ignition switch.
The meter shows wrong information.	<ul style="list-style-type: none"> ● Check your battery voltage of and make sure the voltage is above DC 12 V. 	When the ignition the ignition is off, the needle doesn't return to 0.	<ul style="list-style-type: none"> ● The permanent power might not be install properly. → Check if the red positive wire is connected correctly
Speed does not appear or appear incorrectly.	<ul style="list-style-type: none"> ● Make sure the speed sensor is connected correctly ● Check the speed setting. → Refer to the point 4 of the instruction. 		

※If the problem still can solve after checker the points above, please contact your nearest distributor to get some technical support.