



- Thank you for purchasing our product. Before installing/operating the product, read the instructions carefully and retain them for future reference.

## ⚠ Attention!

- For installation, follow the steps described. Any damage caused by wrong installation shall be imputed to the users.
- To avoid a short circuit from occurring do not pull or modify the wires during installation.
- Do not disassemble or change any parts. Opening and disassembling this unit will void any warranty.
- Maintenance and repairs should be executed by our professionals only.

## NOTE

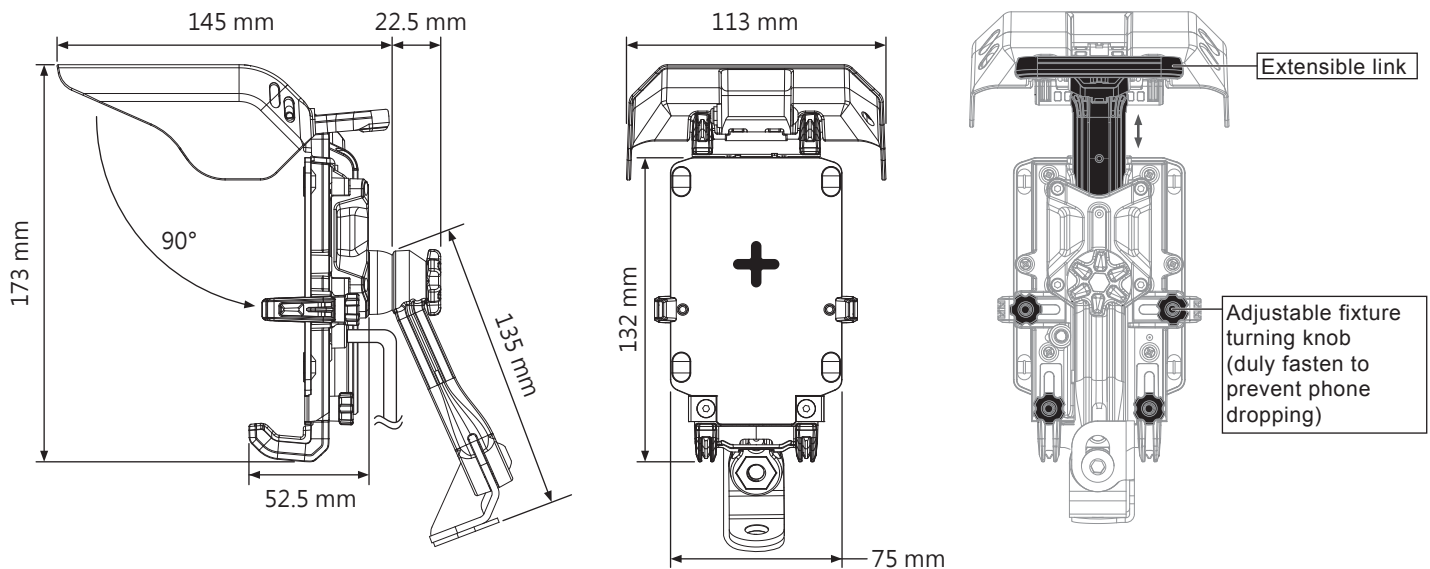
⚠ Some procedures must be followed to avoid damages to the product.

⚠ **WARNING!** Certain procedure must be followed to avoid damages to yourself, to the vehicle or others.

## 1 Accessory

<b>1</b> Phone holder X1	<b>2</b> Mounting stem X1	<b>3</b> Adapter X1	<b>4</b> M8 nut X1	<b>5</b> M8 washer X1
<b>6</b> M8 washer X1	<b>7</b> M8 allen screw X1	<b>8</b> Bracket X1	<b>9</b> Turning knob X1	<b>10</b> M5 Hex Head Bolt X1

## 2 General information



•Working Voltage	Voltage Range : DC 12.5 ~ 16 V
•Effective temperature range	-10 ~ 60 °C
•IP Level	JIS D 0203
•Size	110 x 85 x 199 mm
•Weight	± 336 g
•Phone size length	length 70~96mm / width 125~195mm / high 0~14mm
•Charging protocol	Qi-5w 、 Qi-10w 、 Qi-15w 、 Apple 7.5w 、 Samsung 10w

⚠ **WARNING!** We recommend using a phone case with a flat back casing for a better connection.

⚠ **WARNING!** Before using, confirm that the phone holder is fixed, then proceed with the installation.

⚠ **WARNING!** Avoid directly washing the phone holder.

⚠ **WARNING!** The sun shade may be adjusted for the shading angle but not for rain protection.

⚠ **WARNING!** The design of the phone holder is primarily to be used upright; avoid using the holder horizontally.

⚠ **WARNING!** Tightly lock the turning knobs to avoid phone dropping.

**NOTE** Design and specifications are subject to change without notice.

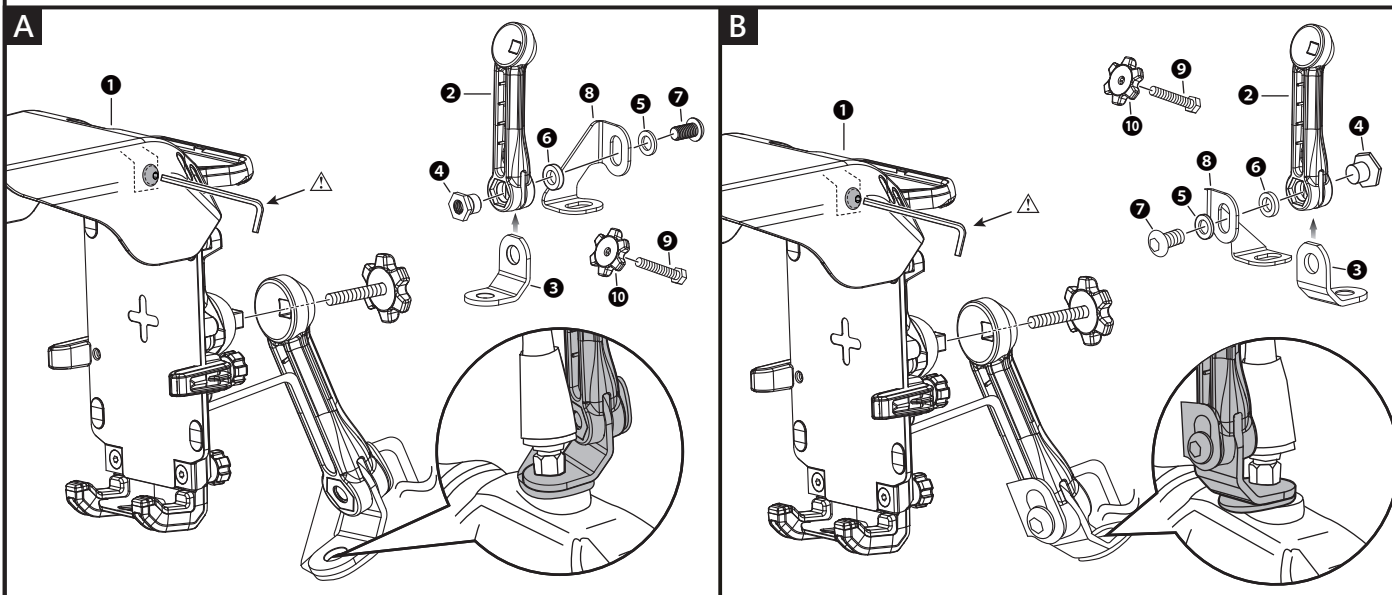
### 3 Installation instructions(A or B)

Follow the steps below during installation.

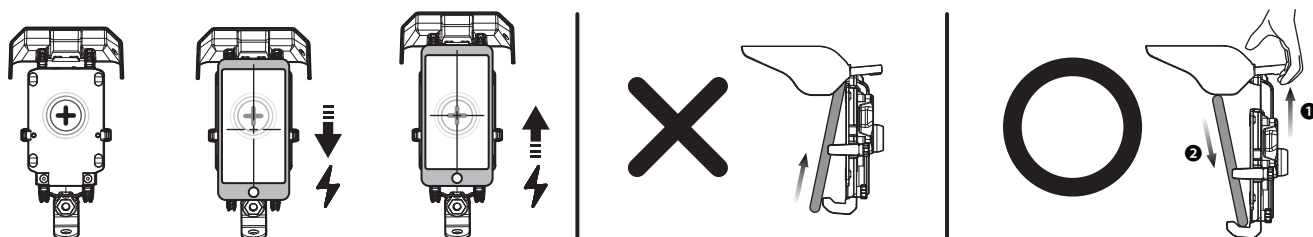
1. Fixture (Accessory 2~8)
2. Phone holder (Accessory 1)
3. Turning knob (Accessory 9~10)

**NOTE** It is recommended to install the fixture (Accessory 2~8) on the bottom of the rearview mirror before assembling with the phone holder (Accessory 1).

**⚠ WARNING!** Adjust the tightness of the sun shade by using the hex key ; the recommended fixing torque of screws shall be 2.5kgf-cm (0.245N-m)  $\pm 0.5$ ; under the condition that screws are fixed overtight, adjusting the sun shade may cause damages to the structure of the sun shade.

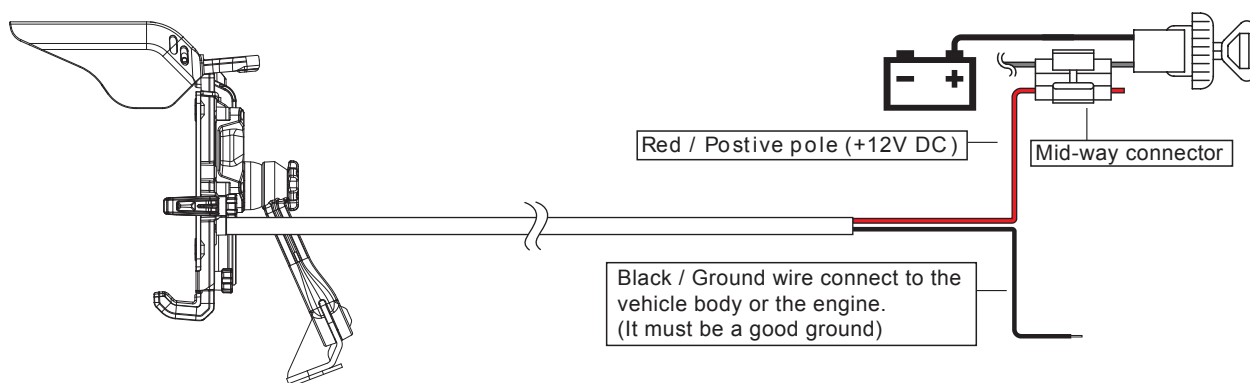


#### Phone Installation Description



**NOTE** The charging efficiency is better when the phone is closer to the charging location (+).

### 4 Wiring installation instructions



### 5 Trouble shooting

The following situations do not indicate malfunction of the unit. Check the following points before contacting us.

Trouble	Check item
No charging.	<ul style="list-style-type: none"> <li>• May be due to lack of power supply.                             <ul style="list-style-type: none"> <li>→ Confirm the wiring is connected.</li> <li>→ Check if positive (red) and negative (black) poles are properly connected.</li> </ul> </li> <li>• May be due to the malfunction of the phone.                             <ul style="list-style-type: none"> <li>→ Confirm whether the phone supports wireless charging.</li> <li>→ Confirm the distance between the phone and the charging location.</li> <li>→ Confirm whether the battery power is fully charged.</li> </ul> </li> </ul>

※If the problems still can't be solved, contact our technical departement.

wh005qr00b