



## ZOMBIE LEVERS '14-UP

# 1721

**THANK YOU FOR CHOOSING KÜRYAKYN!**

**PROTECT YOURSELF AND OTHERS FROM POSSIBLE INJURY AND PROPERTY DAMAGE OR LOSS. PAY CLOSE ATTENTION TO ALL INSTRUCTIONS, WARNINGS, CAUTIONS, AND NOTICES REGARDING THE INSTALLATION, USE, AND CARE OF THIS PRODUCT.**

<b>WARNING</b>	<b>THIS INDICATION ALERTS YOU TO THE FACT THAT IGNORING THE CONTENTS DESCRIBED HEREIN CAN RESULT IN POTENTIAL DEATH OR SERIOUS INJURY.</b>
<b>CAUTION</b>	<b>This indication alerts you to the fact that ignoring the contents described herein can result in minor or moderate potential injury.</b>
<b>NOTICE</b>	<b>This indication alerts you to the fact that ignoring the contents described herein may negatively affect product performance and functionality or damage the product itself or the product to which it is being attached.</b>

### MAKE SURE THE FOLLOWING PARTS HAVE BEEN INCLUDED IN THE KIT:

- 1 Zombie Clutch Lever
- 1 Zombie Brake Lever
- 2 Zombie Emblems
- 2 Grooved Emblems
- 1 Installation instructions

### TOOLS SUGGESTED:

Snap-ring pliers, needle-nose pliers, grease, set of Torx drivers

**NOTICE** These installation instructions contain important information. Ensure that the end user receives this copy and is aware of its importance for future reference.

**STEP 1** Read and understand all steps in the instructions before starting the installation. Park the motorcycle on a hard, level surface and turn off the ignition. Remove the main fuse.

**WARNING** ACCIDENTAL VEHICLE START-UP COULD CAUSE DEATH OR SERIOUS INJURY, REMOVE THE MAIN FUSE BEFORE PROCEEDING.

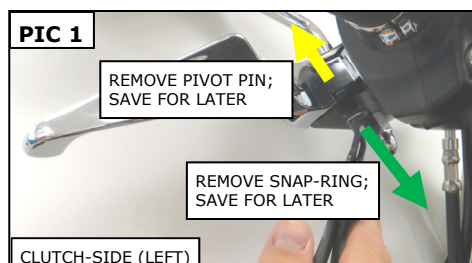
**NOTICE** Avoid damage to the motorcycle. Protect painted surfaces with a soft cloth or blanket.

### CLUTCH-SIDE INSTALLATION:

**STEP 2** Refer to **PIC 1**. Remove the snap-ring securing the clutch lever pivot-pin in the perch assembly; save it for later.

**STEP 3** Refer to **PIC 1**. Carefully remove the pivot pin; save for later.

**STEP 4** Carefully remove the existing clutch lever.



1721-21HD-0814

**-cont.-**

**CUSTOMER SERVICE**  
877.370.3604 (toll free)

**INSTALLATION QUESTIONS**  
techsupport@kuryakyn.com  
or call 715.247.2983

### LIMITED WARRANTY

Kuryakyn warrants that any Kuryakyn products sold hereunder, shall be free of defects in materials and workmanship for a period of one (1) year from the date of purchase by the consumer excepting the following provisions:

- Kuryakyn shall have no obligation in the event the customer is unable to provide a receipt showing the date the customer purchased the product(s).
  - The product must be properly installed, maintained and operated under normal conditions.
  - Kuryakyn makes no warranty, expressed or implied, with respect to any gold plated products.
  - Kuryakyn shall not be liable for any consequential and incidental damages, including labor and paint, resulting from failure of a Kuryakyn product, failure to deliver, delay in delivery, delivery in nonconforming condition, or for any breach of contract or duty between Kuryakyn and a customer.
- Kuryakyn products are often intended for use in specific applications. Kuryakyn makes no warranty if a Kuryakyn product is used in applications other than intended.
- Kuryakyn electrical products are warranted for one (1) year from the date of purchase by the consumer. L.E.D.'S contained in components of Kuryakyn products will be warranted for defects in materials and workmanship for 3 years from the date of purchase where as all other components shall be warranted for one(1) year. This includes, but is not limited to; control modules, wiring, chrome & other components.
- Kuryakyn makes no warranty of any kind in regard to other manufacturer's products distributed by Kuryakyn. Kuryakyn will pass on all warranties made by the manufacturer and where possible, will expedite the claim on behalf of the customer, but ultimately, responsibility for disposition of the warranty claim lies with the manufacturer.

### ABOUT OUR CATALOG

For purchasing Kuryakyn® products, you can receive a complete catalog free of charge. Send the Proof-of-Purchase below with your address to: Kuryakyn  
454 County Road V V  
Somerset, WI 54025-9031  
Please indicate either Accessories Catalog for Harley-Davidson® or GL & Metric Cruisers.

Be sure to ask your local dealer about other Kuryakyn® products, the motorcycle parts and accessories designed for riders by riders.

©2005 Kuryakyn USA® All Rights reserved.



## STEP 5

Refer to **PIC 2 and 4**. Remove the roller bushing; ensure that the plastic alignment-cap remains in place. **DO NOT LOSE THE ALIGNMENT CAP**. Replace the alignment-cap if it is broken (H/D P/N. 46246-01).

**Kuryakyn**

### **WARNING**

**DO NOT INSTALL THE LEVER IF THE ALIGNMENT CAP/ROLLER BUSHING IS DAMAGED OR MISSING! REPLACE DAMAGED OR MISSING CAP/BUSHING KIT WITH H/D P/N. 46246-01.**

**OPERATING THE MOTORCYCLE WITH A FAULTY CLUTCH/BRAKE LEVER CAN LEAD TO LOSS OF CONTROL RESULTING IN DEATH OR SERIOUS INJURY.**

## STEP 6

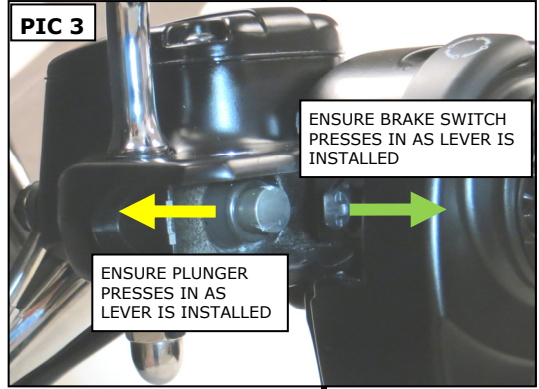
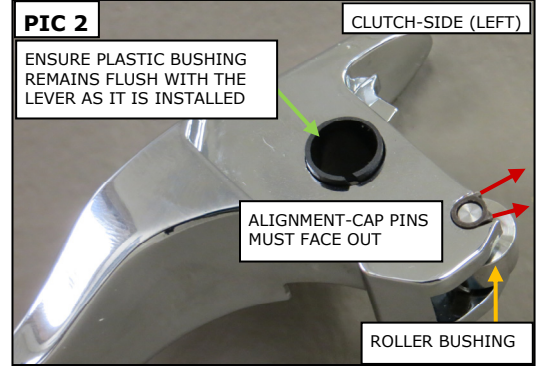
Install the roller bushing in the new Clutch Lever; apply a bit of grease to the roller; ensure that the pins on the plastic alignment-cap locate in the new lever as shown in **PIC 2**.

## STEP 7

Refer to **PIC 2 and 4**. Ensure that the plastic bushing stays flush as the new Clutch Lever is installed; ensure that the clutch switch and clutch plunger are pressed in and do not bind as the new Lever is installed.

## STEP 8

Reinstall the pivot pin and secure with the snap-ring; compress the lever a few times to ensure that it is working properly **BEFORE** starting the motorcycle.



## **BRAKE-SIDE INSTALLATION:**

## STEP 9

Remove the snap-ring securing the brake lever pivot-pin in the perch assembly; set it aside for now it will be reused.

## STEP 10

Remove the two screws securing the outside half of the brake-side perch-clamp.

Secure the master cylinder/lever assembly as the screws are removed to prevent damage.

## STEP 11

With the master cylinder/lever assembly removed from the handlebar, remove the pivot pin and lever; set the pivot pin aside, it will be reused.

## STEP 12

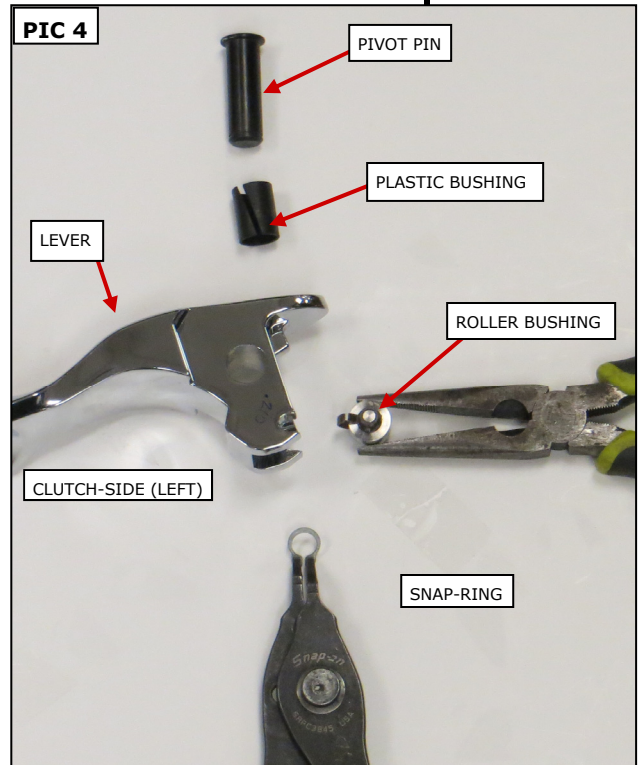
Install the new Brake Lever in the reverse order the existing lever was removed.

Ensure that the plastic bushing remains in the new Brake Lever as it is installed.

Ensure that the brake switch and brake plunger are compressed as the lever is installed.

## STEP 13

Compress the Brake Lever a few times to ensure that the brakes work properly **BEFORE** starting the motorcycle. Reinstall the main fuse.



### NOTE:

**Adhere your choice of emblem after removing all grease, oil, dirt, and debris from the lever. Rub the adhesive backing; remove and discard the backing; press the emblem into place for at least 60 seconds. Proper adhesive bonding ONLY occurs above 50°F (10°C).**

### **NOTICE**

*Ride On!*

**It is the end user's responsibility to ensure that all of the fasteners (including pre-assembled) are tightened before operation of the motorcycle. Kuryakyn will not provide warranty coverage on products or components lost or damaged due to improper installation or lack of maintenance. Periodic inspection and maintenance are required on all fasteners.**

**PAGE  
2**

**ZOMBIE LEVERS '14-UP**

**INSTALLATION**