



INSTALLATION

TOUR TECH CRUISE MOUNTS

4528

PARTS INCLUDED

- 2 Tour Tech Long Offset Arm/Mount/ISO Wing Assemblies—Chrome
- 1 Anti-Seize Packet
- 1 Installation Instructions

Please read and understand entire instructions before starting installation.

THANK YOU FOR CHOOSING KÜRYAKYN!

IN ORDER TO PROTECT YOU AND OTHERS FROM POSSIBLE INJURY AND/OR PROPERTY DAMAGE OR LOSS, PLEASE PAY CLOSE ATTENTION TO ALL INSTRUCTIONS, WARNINGS, CAUTIONS AND NOTICES REGARDING THE USE AND CARE OF THIS PRODUCT.

WARNING

THIS INDICATION ALERTS YOU TO THE FACT THAT IGNORING THE CONTENTS DESCRIBED HEREIN CAN RESULT IN POTENTIAL DEATH OR SERIOUS INJURY.

NOTICE

This indication alerts you to the fact that ignoring the contents described herein may negatively affect product performance and functionality.

NOTICE

IF INSTALLING THIS PRODUCT FOR ANOTHER PARTY, PLEASE MAKE SURE THEY RECEIVE THIS COPY OF THE INSTALLATION INSTRUCTIONS SO THEY ARE AWARE OF THE IMPORTANT INFORMATION CONTAINED IN THEM.

TOOLS SUGGESTED

Set of Hex Wrenches

STRICTLY OBSERVE THE FOLLOWING GUIDELINES IN ORDER TO USE THE PRODUCT PROPERLY AND AVOID POTENTIALLY DANGEROUS ACCIDENTS.

STEP 1

Read and understand all steps in the instructions before starting the installation. Park the motorcycle on a hard, level surface and turn off the ignition.

WARNING

YOU WILL BE WORKING AROUND THE ENGINE AND EXHAUST SYSTEM DURING INSTALLATION. ENSURE THAT THE ENGINE AND EXHAUST SYSTEM HAVE FULLY COOLED TO PREVENT INJURY.

NOTICE

Determine the mounting location and orientation of the Tour Tech mounting clamp before fully tightening the clamp bolt. The Tour Tech mounting clamp may leave marks when tightened down.

STEP 2

While looking at the engine guard, determine your preference of the final height of the Tour Tech mounts.

CUSTOMER SERVICE

877.370.3604 (toll free)

INSTALLATION QUESTIONS

techsupport@kuryakyn.com
or call 715.247.2983

LIMITED WARRANTY

Küryakyn warrants that any Küryakyn products sold hereunder, shall be free of defects in materials and workmanship for a period of one (1) year from the date of purchase by the consumer excepting the following provisions:

- Küryakyn shall have no obligation in the event the customer is unable to provide a receipt showing the date the customer purchased the product(s).
- The product must be properly installed, maintained and operated under normal conditions.
- Küryakyn makes no warranty, expressed or implied, with respect to any gold plated products.
- Küryakyn shall not be liable for any consequential and incidental damages, including labor and paint, resulting from failure of a Küryakyn product, failure to deliver, delay in delivery, delivery in nonconforming condition, or for any breach of contract or duty between Küryakyn and a customer.
- Küryakyn products are often intended for use in specific applications. Küryakyn makes no warranty if a Küryakyn product is used in applications other than intended.
- Küryakyn electrical products are warranted for one (1) year from the date of purchase by the consumer. L.E.D.'S contained in components of Küryakyn products will be warranted for defects in materials and workmanship for 3 years from the date of purchase where as all other components shall be warranted for one(1) year. This includes, but is not limited to; control modules, wiring, chrome & other components.
- Küryakyn makes no warranty of any kind in regard to other manufacturer's products distributed by Küryakyn. Küryakyn will pass on all warranties made by the manufacturer and where possible, will expedite the claim on behalf of the customer, but ultimately, responsibility for disposition of the warranty claim lies with the manufacturer.

ABOUT OUR CATALOG

For purchasing Küryakyn® products, you can receive a complete catalog free of charge.

Send the Proof-of-Purchase below with your address to: Küryakyn, P.O. Box 339, Somerset, WI 54025.

Please indicate either Accessories Catalog for Harley-Davidson® or GL & Metric Cruisers.

Be sure to ask your local dealer about other Küryakyn® products, the motorcycle parts and accessories designed for riders by riders.

©2005 Küryakyn USA® All Rights reserved.



kuryakyn.com

STEP 3

On the mounts, remove the large main mounting bolt, this is the point where the arm pivots on the clamp. PIC 1

STEP 4

Fold the clamp around the engine guard in your desired location. Be sure the head of the hinge pin is facing up. The "cogged" face of the clamp should face outward from the bike. PIC 1 and PIC 2

STEP 5

Re-install the offset arm on the clamp. Be sure the 1/2" nylon washer is in place between the two clamp "ears." PIC 2 and PIC 3

NOTE: This washer is cosmetic only. When the clamp is tightened, the "ears" of the clamp may not touch the washer.

STEP 6

Position the offset arm to your liking. Tighten the main mounting bolt securely. PIC 3

STEP 7

Position the footpeg as desired. Using a hex wrench, tighten the 5/16"-18 socket head cap screw located on the end of the peg. The male mount will seat itself into the peg and keep it from rotating.

NOTE: Make sure that when the footpeg is in the "folded up" position, that it is not resting or rubbing on the fairing lower.



WARNING POSITION THE TOUR TECH ARMS AND PEGS SO THEY DO NOT INTERFERE WITH THE OPERATION OF THE FOOT CONTROLS. INTERFERENCE WITH THE FOOT CONTROLS MAY CAUSE LOSS OF CONTROL RESULTING IN SERIOUS INJURY OR DEATH.



WARNING CHECK TO MAKE SURE THAT THERE IS PROPER GROUND CLEARANCE FOR CORNERING. LOSS OF CONTROL OF THE MOTORCYCLE AND SERIOUS INJURY MAY OCCUR IF THE PEG/ARM IS NOT POSITIONED PROPERLY. REPOSITION THE TOUR TECH MOUNT IF NECESSARY SO THAT THERE IS ADEQUATE CORNERING CLEARANCE.

STEP 8

Position the peg as desired and tighten the 5/16"-18 socket head cap screw located on the end of the peg. To assist in holding the ISO Wing in the desired position, tighten the set screw on the side of the peg. PIC 4

STEP 9

Note the two small tapped holes in the backside of the foot peg clevis area. The setscrew should be positioned in the lower of the two holes. By running the setscrew in or out, the angle of the foot peg may be adjusted. PIC 5

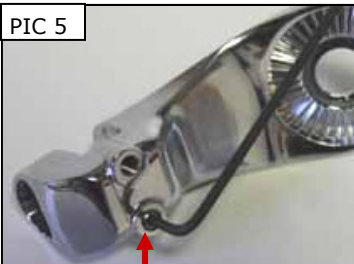
STEP 10

Periodically check the tightness of all fasteners.

NOTICE

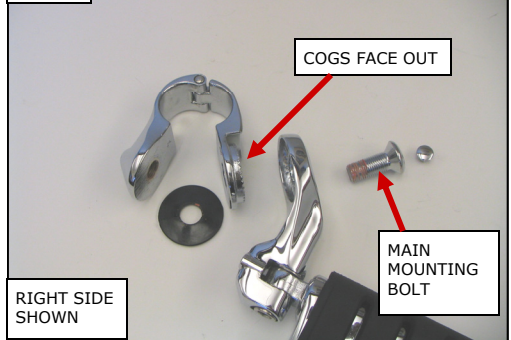
It is the installer's responsibility to ensure that all of the fasteners (including pre-assembled) are tightened before operation of the motorcycle. Kuryakyn will not provide warranty coverage on products or components lost due to improper installation or lack of maintenance. Periodic inspection and maintenance are required on all fasteners.

PIC 5



ADJUST PEG ANGLE HERE WITH SET SCREW IN BOTTOM HOLE

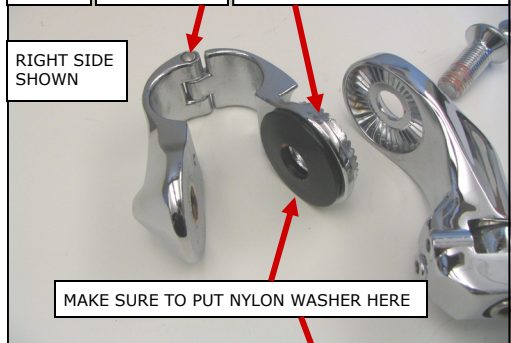
PIC 1



PIC 2

PIN HEAD UP

COGGED PORTION FACES OUT



PIC 3



PIC 4



PAGE
2

Ride On!

TOUR TECH CRUISE MOUNTS

INSTALLATION