



Part No. 2321-0275

MEK1960

REVISION 0

Trigger Lock Mounting Kit, Polished Aluminum
Memphis Fats
Honda Fury

Aluminum parts are electrocoated (E-coated)
for durability and weather resistance.

Before assembly, read Warnings inside



WARNING

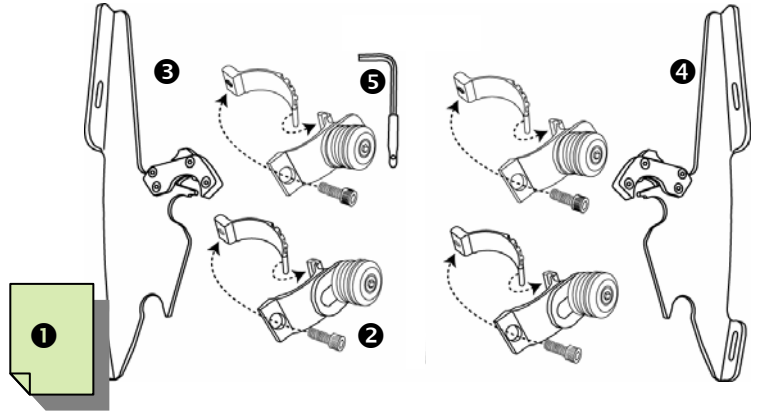
1. During installation, make sure that the windshield and hardware do not interfere with any cables or wiring when the forks are turned all the way in either direction. Also make sure , through the full range of adjustment, that the windshield and hardware do not hit the gas tank.
2. This is a detachable windshield, ALWAYS make sure the locking mechanism is fully engaged after installing the windshield.
3. The improper installation of this kit and related components could result in serious injury or death.



CAUTION

1. Memphis Shades windshields are made from Lucite® acrylic, and will last for years with proper care. Clean your windshield with plenty of soapy water (mild dish-washing liquid is best) and a soft cotton cloth. Use your bare hands to feel and dislodge bugs, or cover with a wet, soapy towel and let it soak. Don't use paper towels and scrape with anything. Small scratches can be removed with NOVUS #2.
2. Never use any glass cleaning products, petroleum based chemicals, or cleaning agents with ammonia, bleach or any other harsh chemicals. This includes (but not limited to) RainX, brake fluid, acetone, paint thinner, benzene and gasoline. "If it hurts your nose, it will hurt the plastic."
3. Glass cleansing agents will cause severe damage to your windshield, and will void your warranty. For care and cleaning we recommend using **Memphis Shades All Kleer**, a unique cleaner/polish, bug remover and rain repellent that leaves a super slick surface that makes the next cleaning even easier.
4. At certain times of the day the Sunlight can reflect off the curvature of a windshield and cause extreme heat build-up on motorcycle instruments and instrument panel. Take care when parking. Park facing the sun, place an opaque object over the instruments or adjust the windshield to avoid reflections.

1. Kit Contents



Ref	Code	Description	Qty
1	I1960	Mounting Instructions	1
2	S1167EC	Fork clamp assembly	4
3	M1133EC	Clutch side plate assembly	1
4	M1134EC	Throttle side plate assembly	1
5	M310	3/16" short arm allen wrench	1
6			
7			
8			
9			
10			

2. Mounting Instructions

Additional tools required: 8mm and 10mm wrench for bracket removal.

1. **Cover gas tank and front fender with a towel to avoid damage during installation.**
2. Install the two mounting plates onto the windshield, using the bottom and third bolt up. Leave the nylon washers off. The small tab goes to the bottom, big one at the top. *Tabs point in towards the Headlight.* (see fig. 1)
3. Remove the bolt from both turn signal clamps using the 8mm and 10mm wrench. (Fig 2)
4. Remove the turn signal bracket. (Fig 2)
5. Remove the clutch side wire loom and twist it off of the wiring harness to free the turn signal wires and then reinstall the wire loom. The throttle side wire loom does not require removal to slip out the turn signal wires

Continued overleaf.....

Memphis Shades warrants all product components, metal and plastic, against defects in materials and workmanship for 24 months.

For Parts and Warranty Help, Contact:

Memphis Shades, Inc.

P.O. Box 429

Rossville, TN 38066

(901) 853 0293

Visit us on the web at www.memphisshades.com or you can also reach us by email:

customerservice@memphisshades.com

**Trigger Lock Mounting Kit, Polished Aluminum
Memphis Fats
Honda Fury**

2. Mounting Instructions, continued

6. Take the turn signal bracket from the clutch side fork, invert it, and use on the throttle side fork. Repeat on other side.
 7. Slide the turn signal clamps down the forks until the alignment tab slips into the pinch bolt slot. Allow enough room for the wiring harness to pass underneath.
 8. Dress and align the turn signal cables, making sure they will not interfere with operation of the motorcycle.
 9. Align the turn signal clamp with the turn signal bracket and fix in place with the bolt.
 10. Loosely install the four Fork Clamps on the forks, approximately 2" apart. (Fig 3)
 - 11 Start with Fork Clamp Bushing adjusted to rear of slot. Then adjust as needed and check for clearance.
 12. Slip the windshield mounting plates and windshield onto the fork clamps, and secure the left and right side locking mechanism (Fig 4 & Fig 5)
 13. Adjust the height, angle and alignment of the windshield and tighten **ALL** bolts.
- Note: This is a detachable windshield, ALWAYS make sure the Locking Mechanism is Fully Engaged after installing the windshield!**

Fig. 1

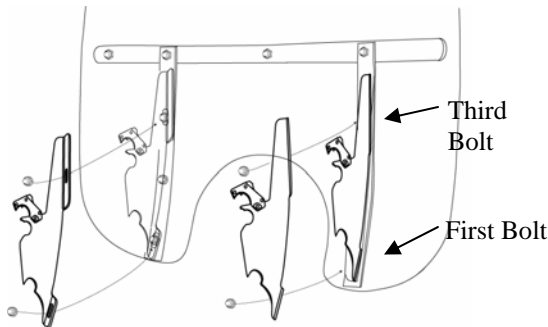


Fig. 2

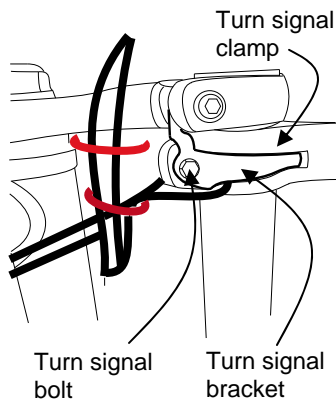


Fig. 3

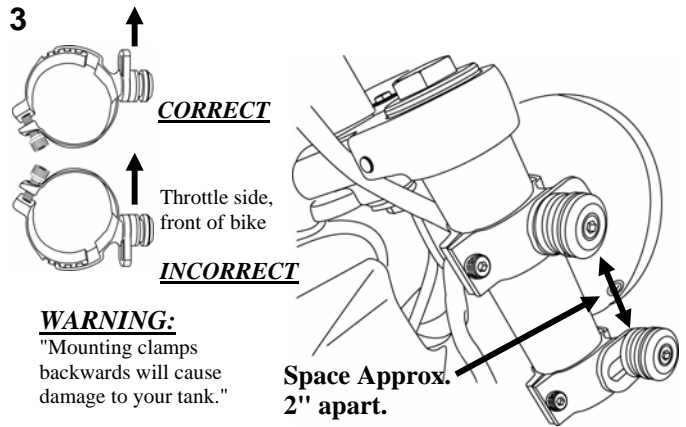


Fig. 4

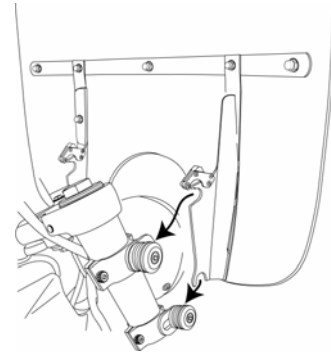
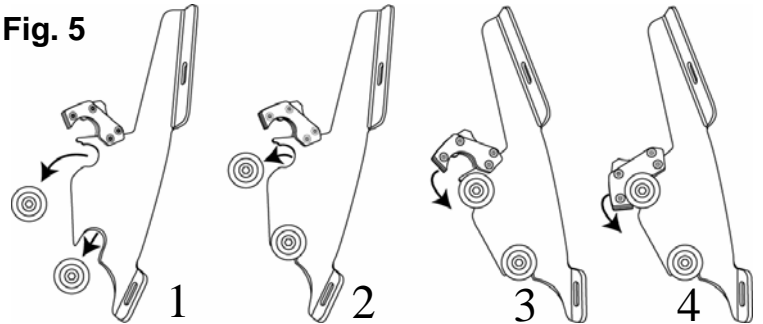


Fig. 5



1. Place lower slot into lower bushing.
2. Rotate top slot into place.
3. Secure locking Mechanism.
4. Loosen Allen Bolt to adjust angle, then re-tighten Allen Bolt.

