



Part No. 2321-0283

MEK1969

REVISION 0

**Honda VT1300CS Sabre**  
**Sportshield**  
**Mounting kit, Polished Aluminum**

**Detachable system allows easy removal.**  
**Stylish and Functional**

Before assembly, read Warnings inside



## WARNING

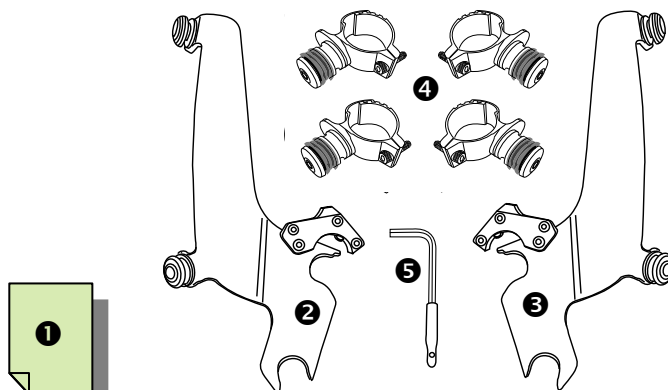
1. During installation, make sure that the windshield and hardware do not interfere with any cables or wiring when the forks are turned all the way in either direction. Also make sure, through the full range of adjustment, that the windshield and hardware do not hit the gas tank.
2. This is a detachable windshield, ALWAYS make sure the locking mechanism is fully engaged after installing the windshield.
3. The improper installation of this kit and related components could result in serious injury or death.



## CAUTION

1. Memphis Shades windshields are made from Lucite® acrylic, and will last for years with proper care. Clean your windshield with plenty of soapy water (mild dish-washing liquid is best) and a soft cotton cloth. Use your bare hands to feel and dislodge bugs, or cover with a wet, soapy towel and let it soak. Don't use paper towels and scrape with anything. Small scratches can be removed with NOVUS #2.
2. Never use any glass cleaning products, petroleum based chemicals, or cleaning agents with ammonia, bleach or any other harsh chemicals. This includes (but not limited to) RainX, brake fluid, acetone, paint thinner, benzene and gasoline. "If it hurts your nose, it will hurt the plastic."
3. Glass cleansing agents will cause severe damage to your windshield, and will void your warranty.
4. At certain times of the day the Sunlight can reflect off the curvature of a windshield and cause extreme heat build-up on motorcycle instruments and instrument panel. Take care when parking. Park facing the sun, place an opaque object over the instruments or adjust the windshield to avoid reflections.

## 1. Kit Contents



Ref	Code	Description	Qty
❶	I1969	Mounting Instructions	1
❷	M1158EC	Throttle side plate assy	1
❸	M1159EC	Clutch side plate assy	1
❹	S1230EC	Small detachable fork clamp assy	4
❺	M310	3/16 Short arm allen wrench	1

## 2. Mounting Instructions

Additional tools required: 8mm, 10mm and 12mm wrench for bracket removal.

**1. Cover gas tank and front fender with a towel to avoid damage during installation.**

2. Install the two mounting plates ❷ ❸ onto the windshield, using the bolts which are pre-assembled to the mounting plates. The santoprene grommets should be inserted through the holes in the windshield so that the flat part of the grommet lies flat on each side of the plastic. The tabs point in towards the headlight when installed correctly. (See Fig 1)

3. Remove the bolt from both turn signal clamps using the 8mm and 10mm wrench. (Fig 2)

4. Remove the turn signal bracket. (Fig 2)

5. Remove the clutch side wire loom using a 12mm wrench and twist it off of the wiring harness to free the turn signal wires and then reinstall the wire loom. The throttle side wire loom does not require removal to slip out the turn signal wires.

6. Take the turn signal bracket from the clutch side fork, invert it, and use on the throttle side fork. Repeat on other side.

7. Slide the turn signal clamps down the forks until the alignment tab slips into the pinch bolt slot. Allow enough room for the wiring harness to pass underneath.

**continued over....**

Memphis Shades warrants all product components, metal and plastic, against defects in materials and workmanship for 24 months.

### **For Parts and Warranty Help, Contact:**

Memphis Shades, Inc.

P.O. Box 429

Rossville, TN 38066

(901) 853 0293

Visit us on the web at [www.memphisshades.com](http://www.memphisshades.com) or you can also reach us by email:

[customerservice@memphisshades.com](mailto:customerservice@memphisshades.com)



Part No. 2321-0283

Honda VT1300CS Sabre  
Sportshield  
Mounting kit, Polished Aluminum

## 2. Mounting Instructions, continued

8. Remove the throttle side turn signal from the fork. Pass it through the opening between the fork and headlight from the back side to the front.

Now pass it around the throttle cable and reinstall near the lower triple tree making sure the turn signal wires do not interfere with the throttle cable. Check wires on both sides to make sure they do not interfere with the operation of the motorcycle.

9. Align the turn signal clamp with the turn signal bracket and fix in place with the bolt.

10. Loosely install the four Fork Clamps<sup>4</sup> on the forks, approximately 2" apart, approximately 1/2" from the upper triple tree (Fig 3)

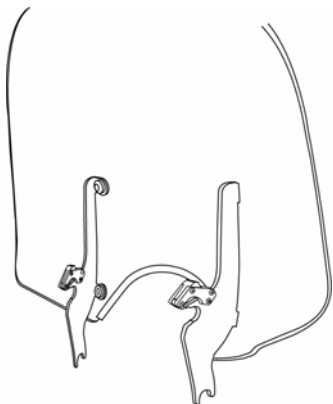
11 Start with Fork Clamp Bushing adjusted to rear of slot, then adjust as needed and check for clearance.

12. Slip the windshield mounting plates and windshield onto the fork clamps, and secure the left and right side locking mechanism (Fig 4)

13. Adjust the height, angle and alignment of the windshield and tighten **ALL** bolts.

**Note: This is a detachable windshield, ALWAYS make sure the Locking Mechanism is Fully Engaged after installing the windshield!**

Fig. 1



Tabs face in towards headlight.

Fig. 2

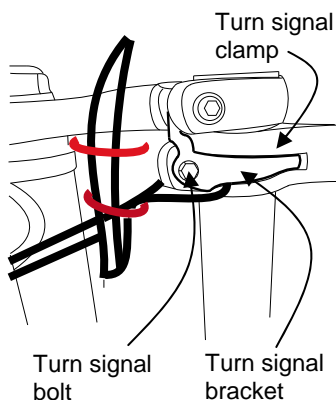
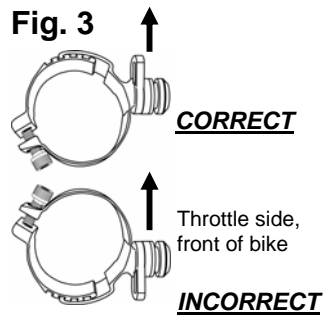


Fig. 3



### **WARNING:**

"Mounting clamps backwards will cause damage to your tank."

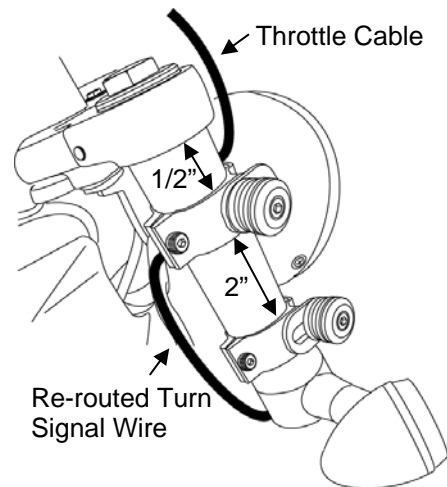
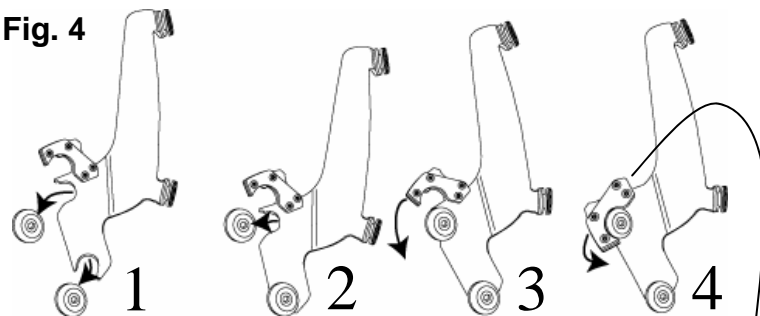


Fig. 4



1. Place lower slot into lower bushing.
2. Rotate top slot into place.
3. Secure locking mechanism.
4. Loosen Allen Bolt to adjust angle, then re-tighten Allen Bolt.

