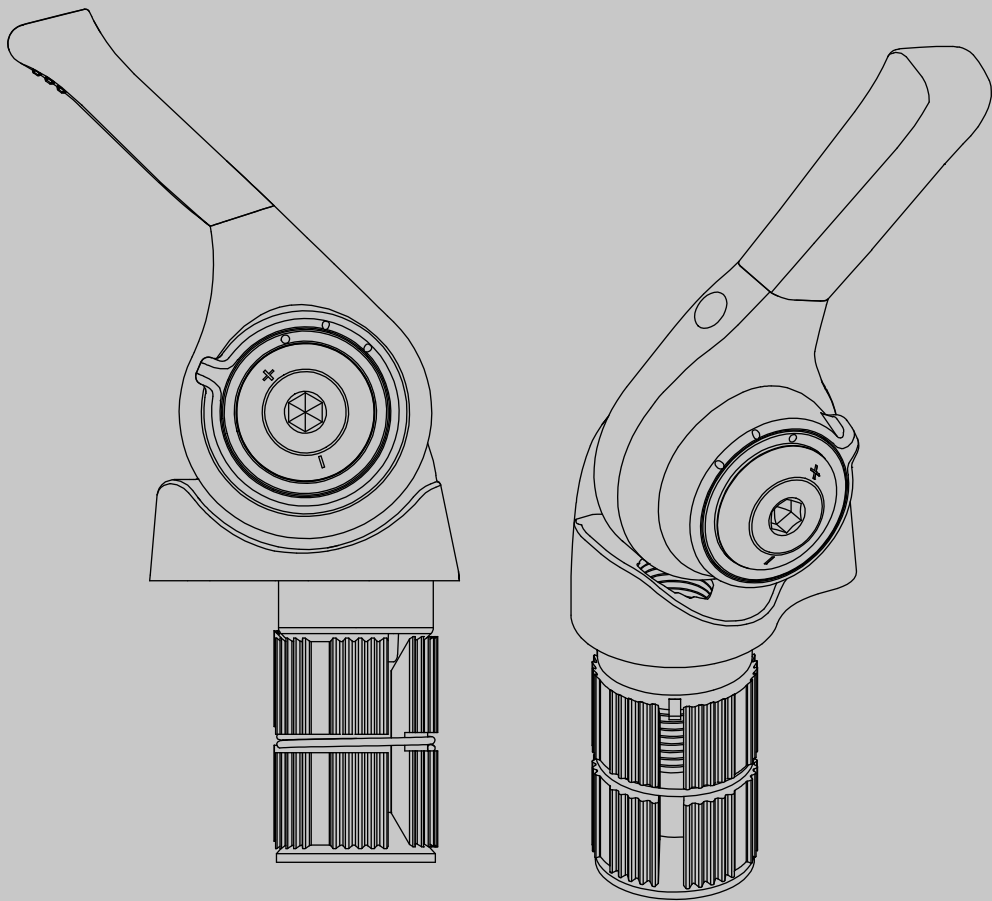


microSHIFT

Bar End Shifter User Manual

BAR END SHIFTER



Important Notice



REMINDER

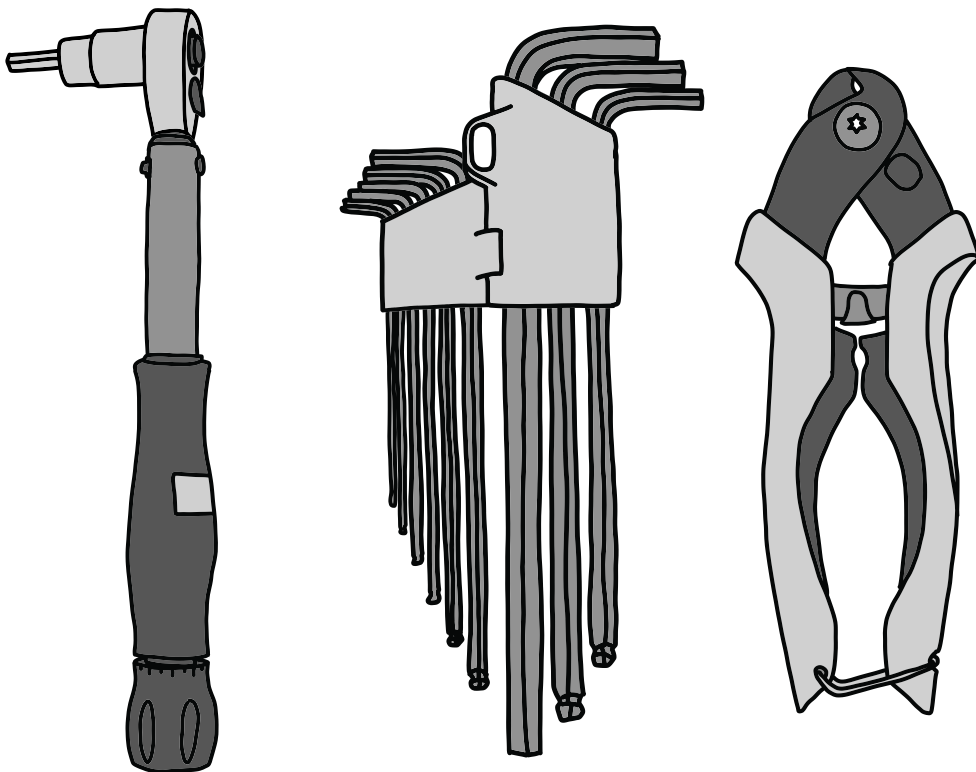
Before installing the products, please read and understand the installation procedures. Improper installation can lead to premature product failures or even injuries. If you have any questions on how to install, please contact us or consult with a professional bicycle mechanic.

INDEX

Tools and Supplies	3
Installation Procedures	4
Base Unit Installation	4
Lever Assembly	5
Housing Routing and Sizing	8
Cable Routing (Right Shifter)	10
Rear Derailleur Cable Attachment	11
Torque Cap Adjustment (Right Shifter)	13
Rear Derailleur Shifting Adjustment	16
Cable Routing (Left Shifter)	17
Front Derailleur Cable Attachment	18
Torque Cap Adjustment (Left Shifter)	19
Front Derailleur Shifting Adjustment	23
Right Shifter Friction Mode	24
Exploded Diagram & Service Parts	26

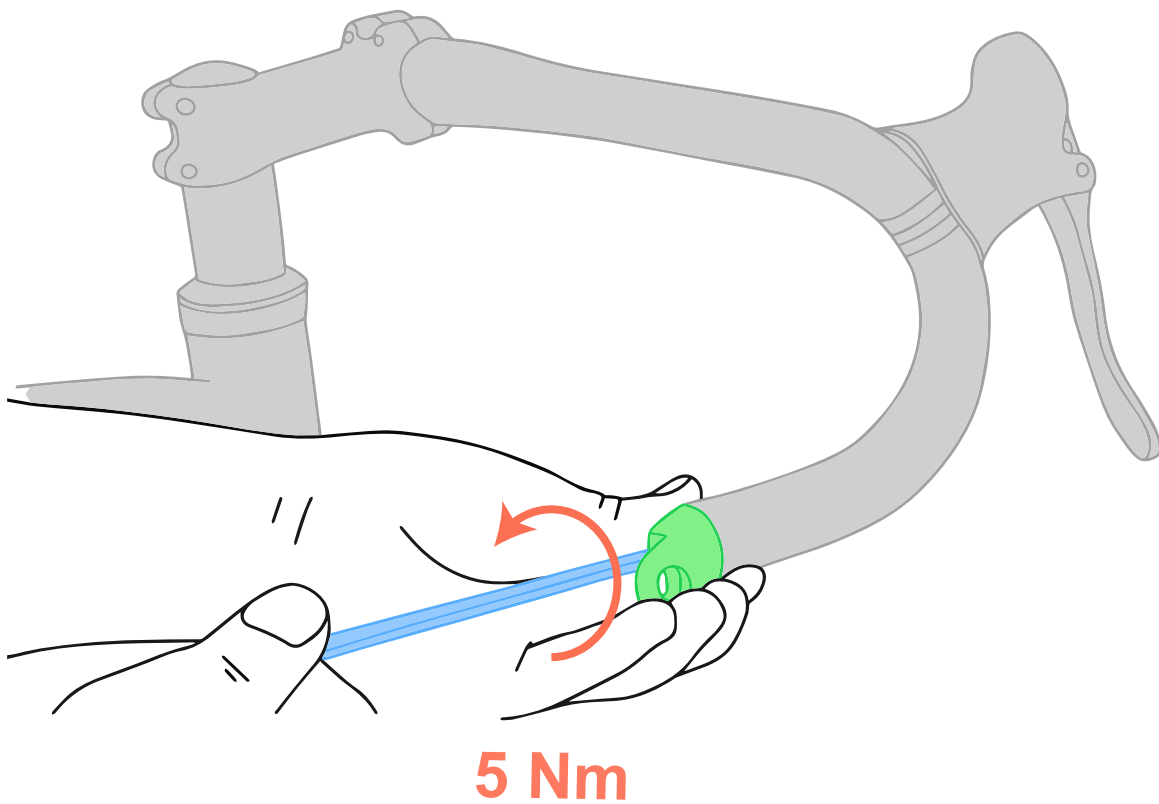
Tools and Supplies

1. Torque wrench
2. 4mm & 5mm Hex bits
3. Allen keys
4. Cable & housing cutter



1. Base Unit Installation

Insert **the base unit** into the end of handlebar, and use a **5mm Allen key** to turn the base fixing bolt counterclockwise to tighten it to **5 Nm**.



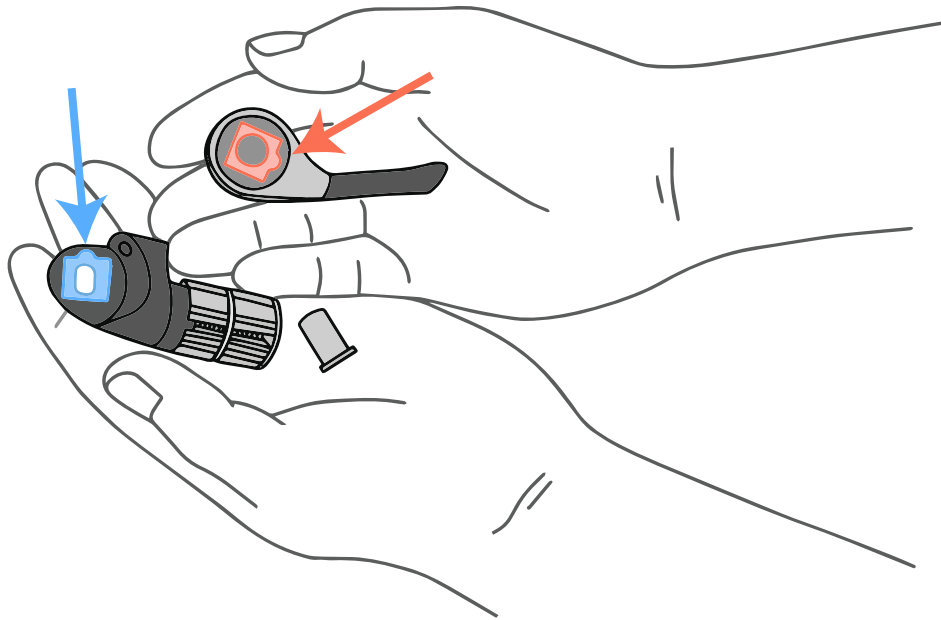
2. Lever Assembly

Part I

Line up **the half circle indent** on the shifter body with **side of the square** facing the bottom of the handlebar .



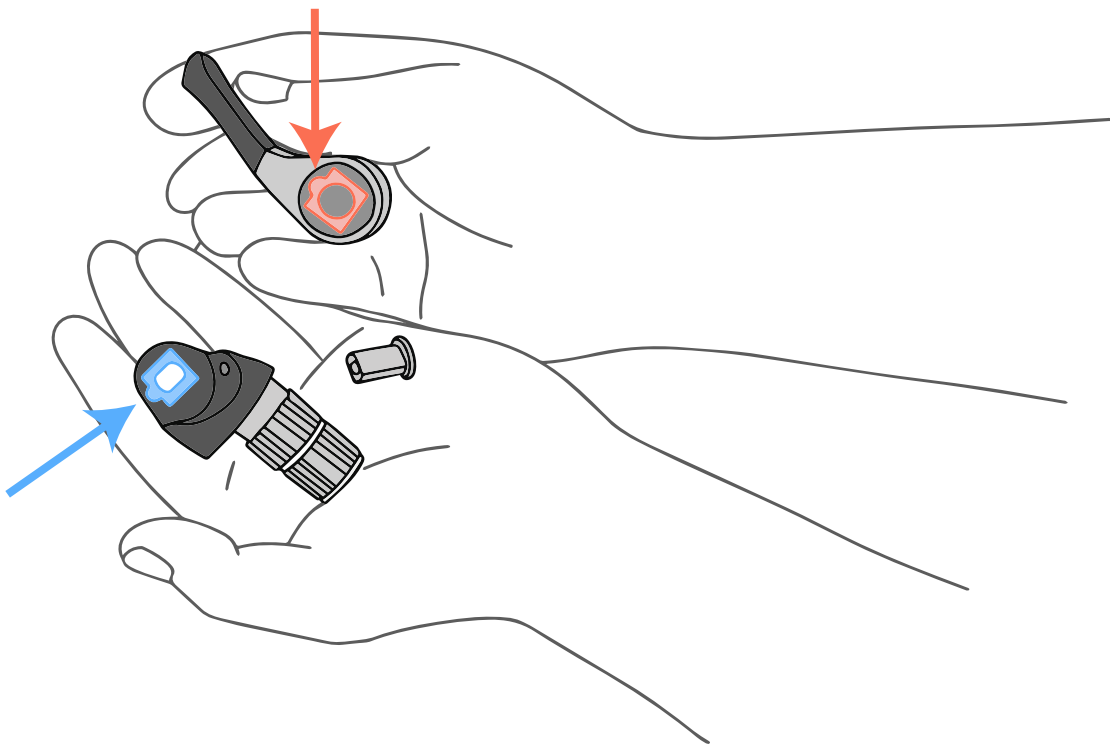
Right Shifter



2. Lever Assembly

Part II

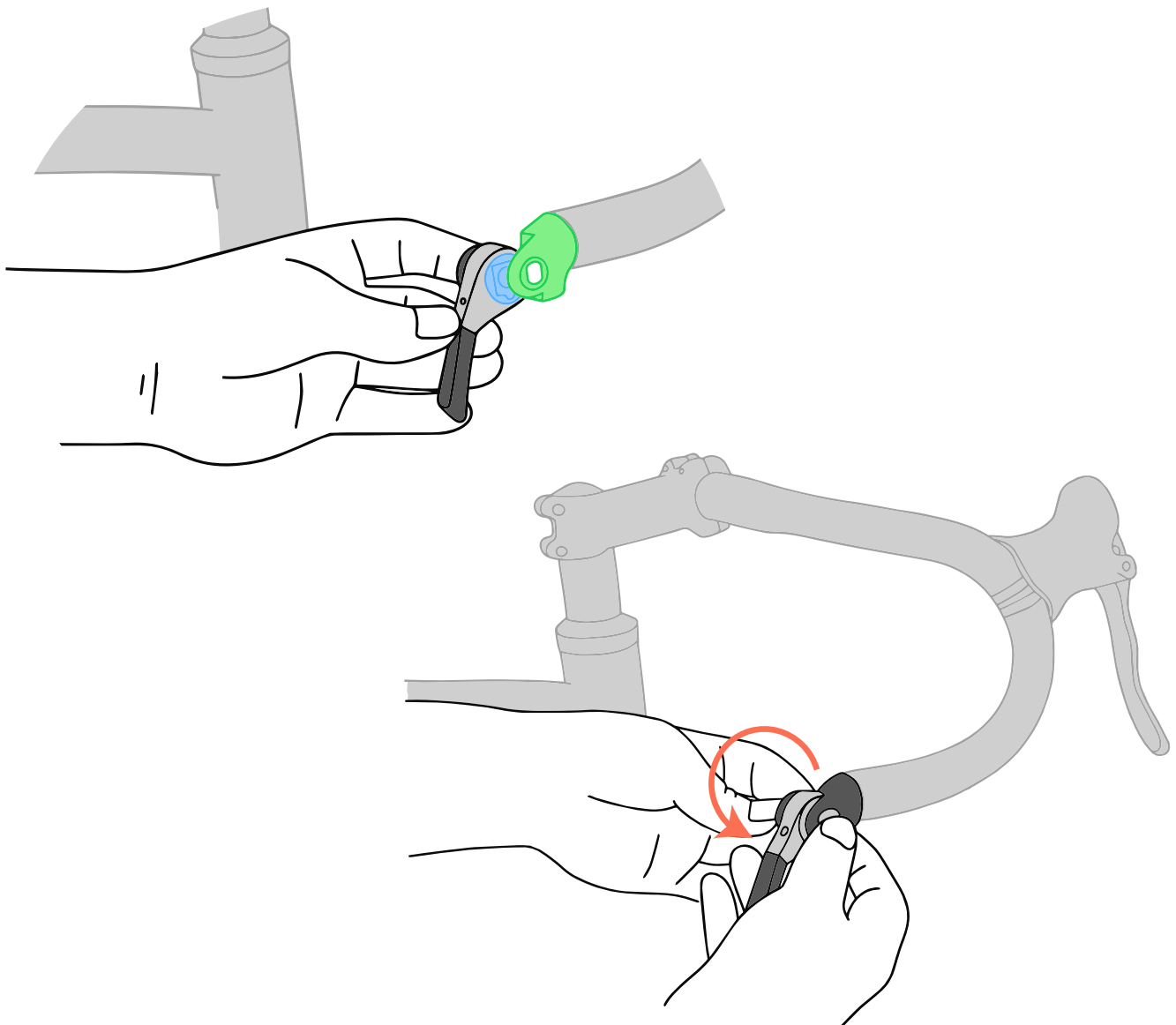
Left Shifter



2. Lever Assembly

Part III

Match the lever body to the base unit, then insert the nut and turn the fixing bolt clockwise to tighten.



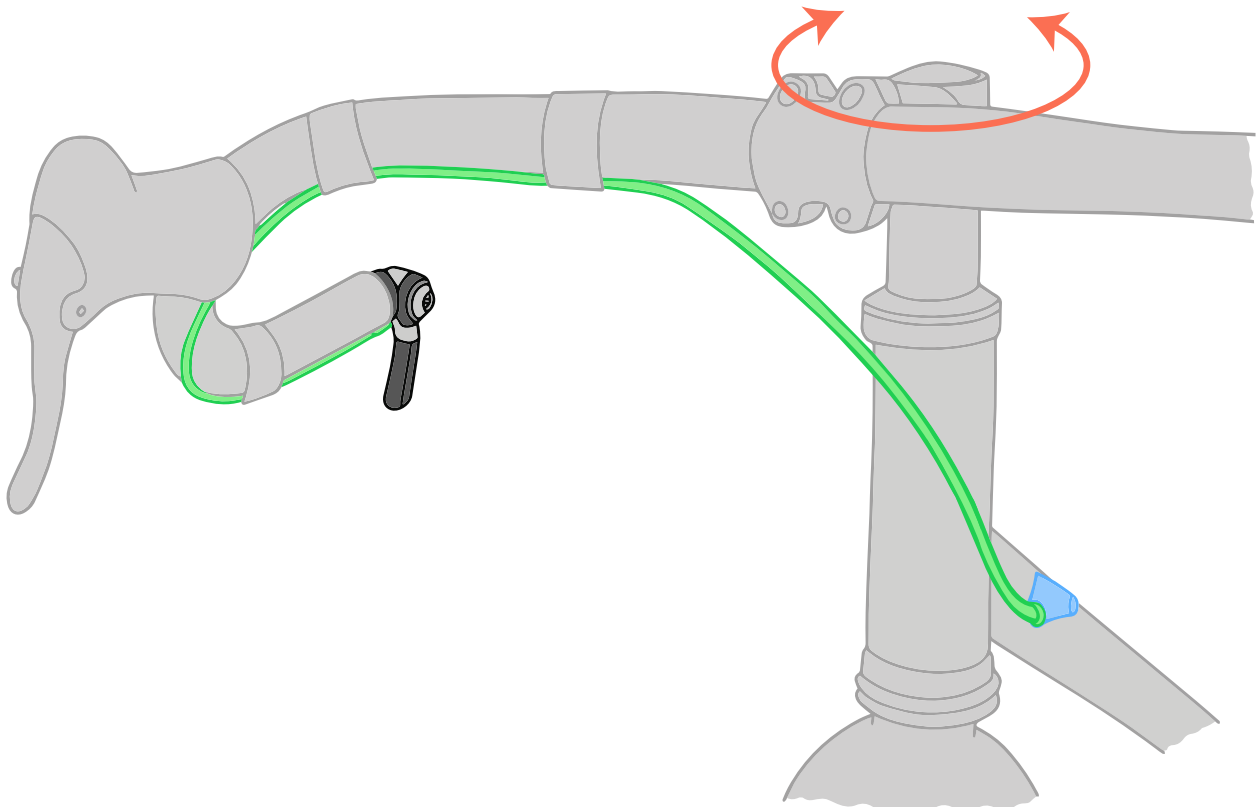
3. Housing Routing and Sizing

Part I



Every bike is different - refer to your bike's instructions for proper cable routing.

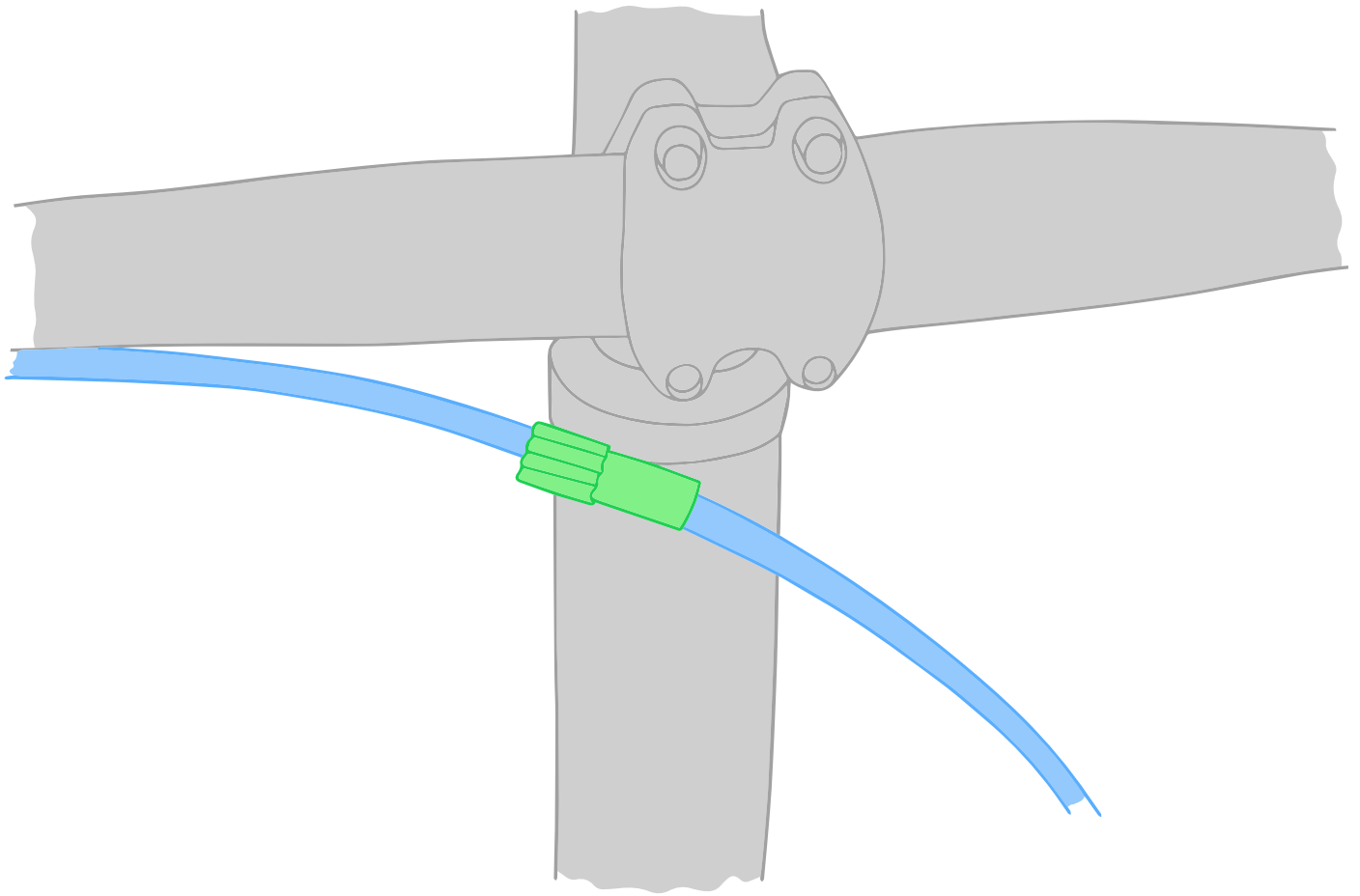
Cut **the housing** so that it's long enough to reach from the shifter to **the first housing stop** with the **handlebars turned**. Minimize sharp curves for better shifting performance.



3. Housing Routing and Sizing

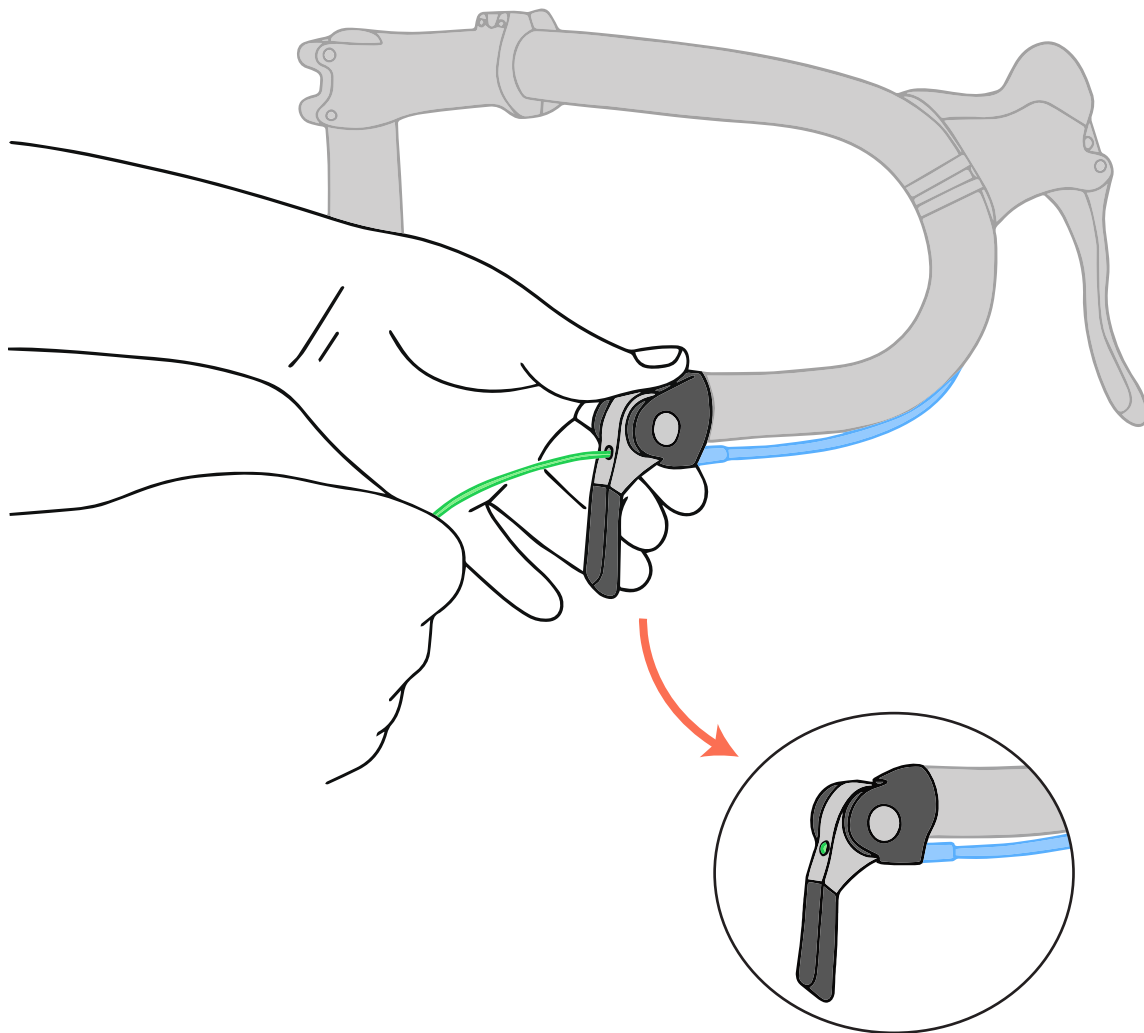
Part II

If you're using a mountain derailleur that doesn't have a barrel adjuster and your frame does not have an integrated barrel adjuster, you will want to install **an inline barrel adjuster** in **the housing**.



4. Cable Routing (Right Shifter)

With the lever shifted to its lowest setting, insert **the cable** through the hole on the back of the shifter, and out through the base unit into **the housing**.

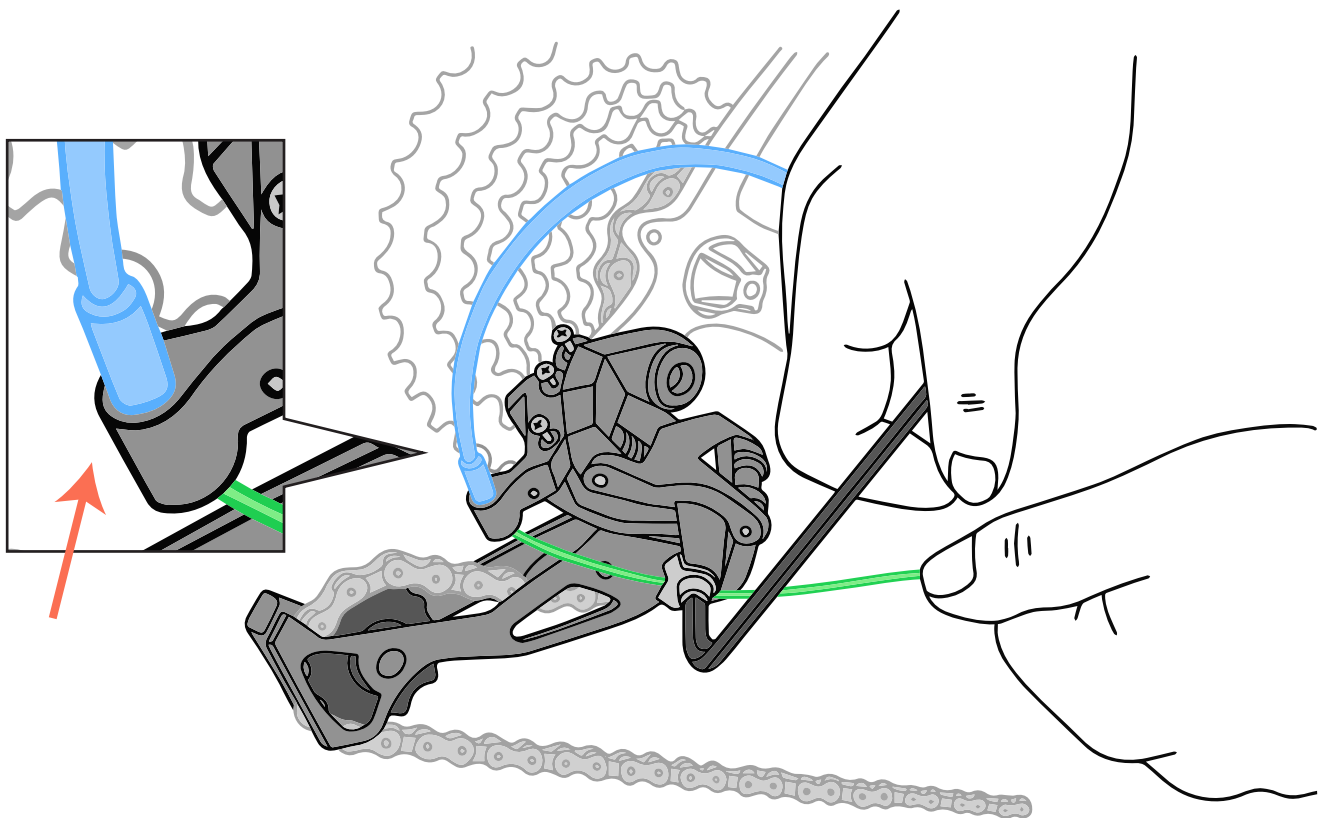


5. Rear Derailleur Cable Attachment

Part I

Route **the cable** through the rear derailleur housing stop, making sure that **the housing** is **fully inserted in the stop**.

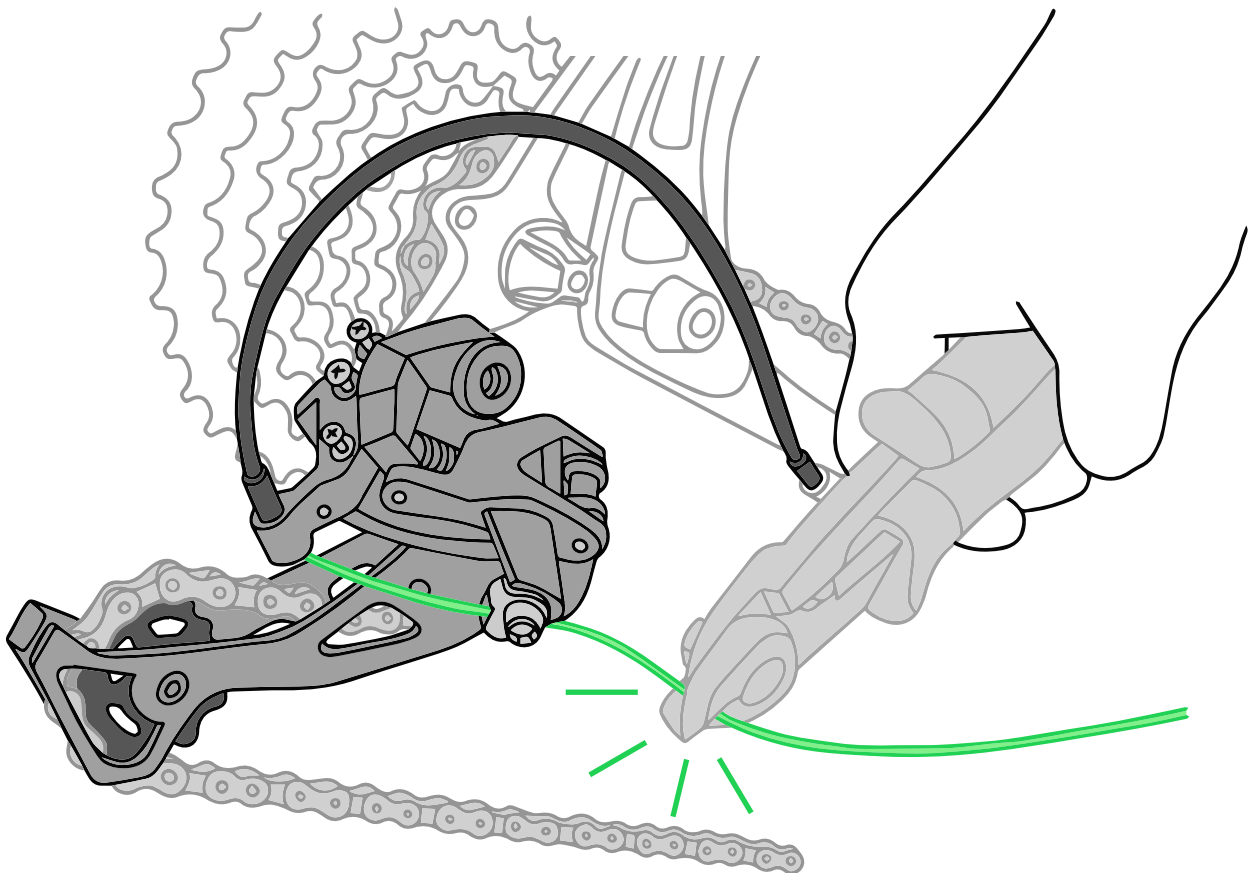
Pull **the cable** tight through the cable fixing point and tighten to the derailleur's torque spec.



5. Rear Derailleur Cable Attachment

Part II

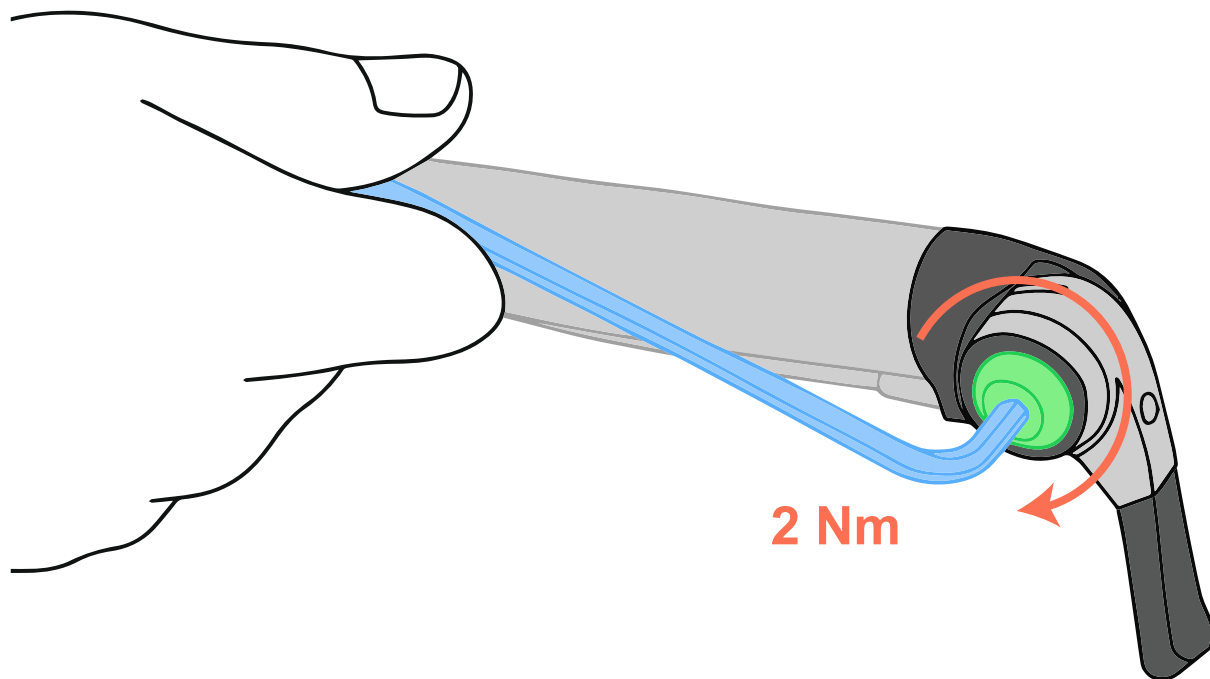
Trim the end of **the cable** and attach a cable end.



6. Torque Cap Adjustment (Right Shifter)

Part I

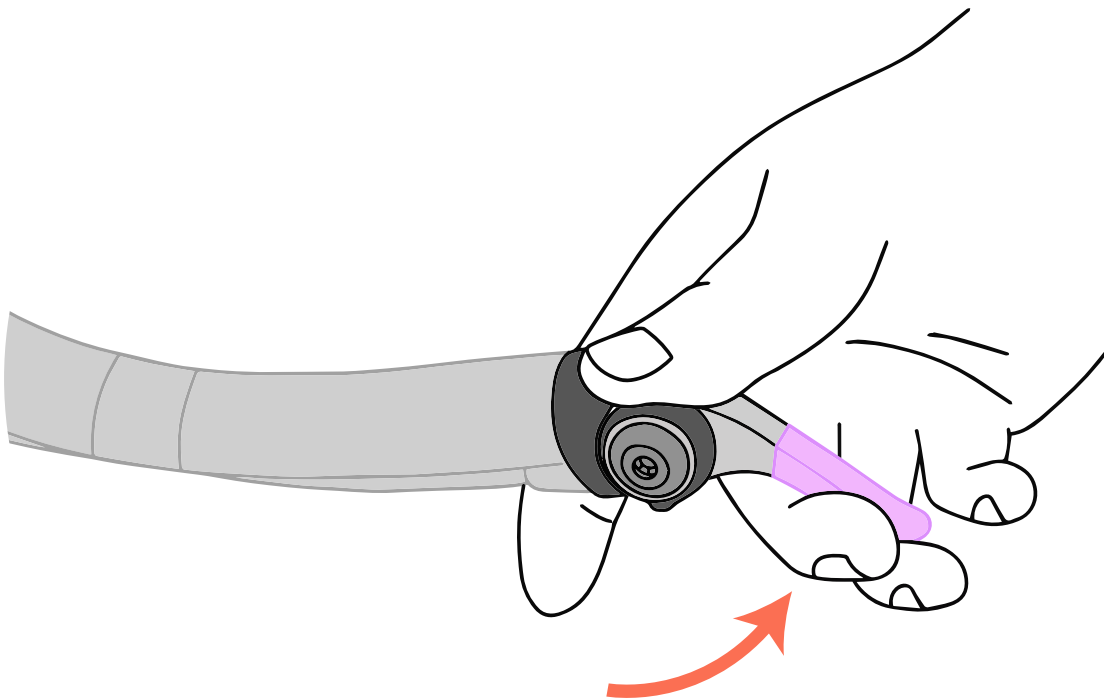
Tighten **the torque cap** on the shifter to **2 Nm** using a **4mm hex wrench**.



6. Torque Cap Adjustment (Right Shifter)

Part II

Shift **the lever counterclockwise** to the next gear without moving the pedals.



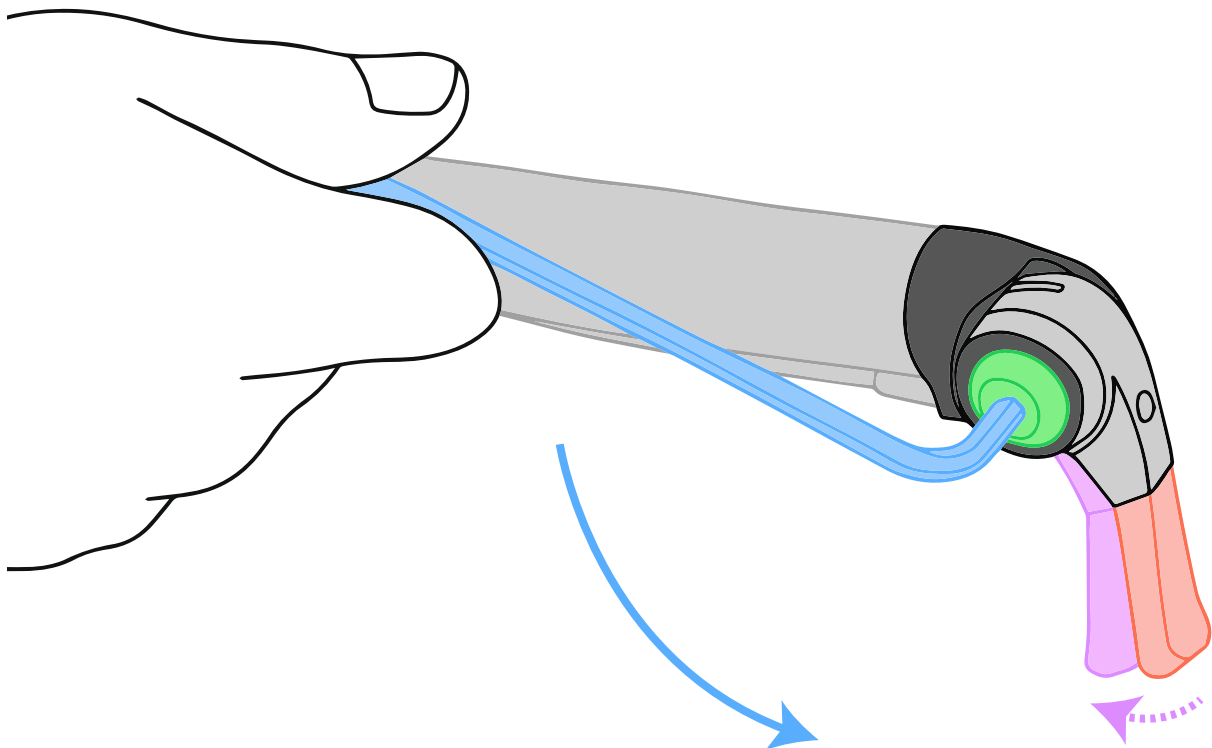
6. Torque Cap Adjustment (Right Shifter)

Part III

Shift the lever one gear up from the lowest position without pedaling to advance the chain. Then, loosen **the torque cap** with **the 4mm hex wrench** until **the lever returns to the index position**.

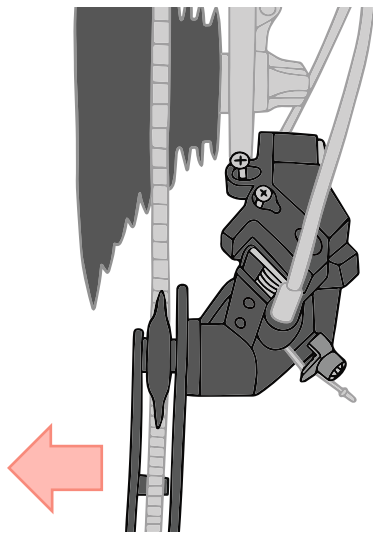


If further adjustment of shifting effort is needed, tighten or loosen the torque cap as necessary.

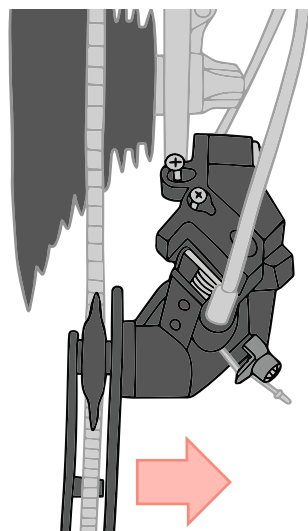
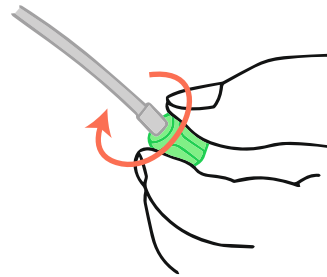


7. Rear Derailleur Shifting Adjustment

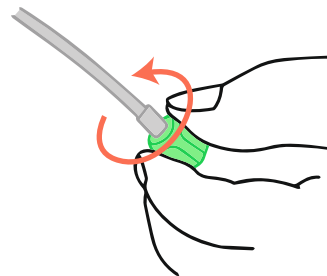
Now make several shifts up and down the cassette. If shifting the slow to move to a larger cog, turn the **barrel adjuster** counter-clockwise. If the shifting is slow to move to a smaller cog, turn the **barrel adjuster** clockwise.



Slow to shift to larger cogs

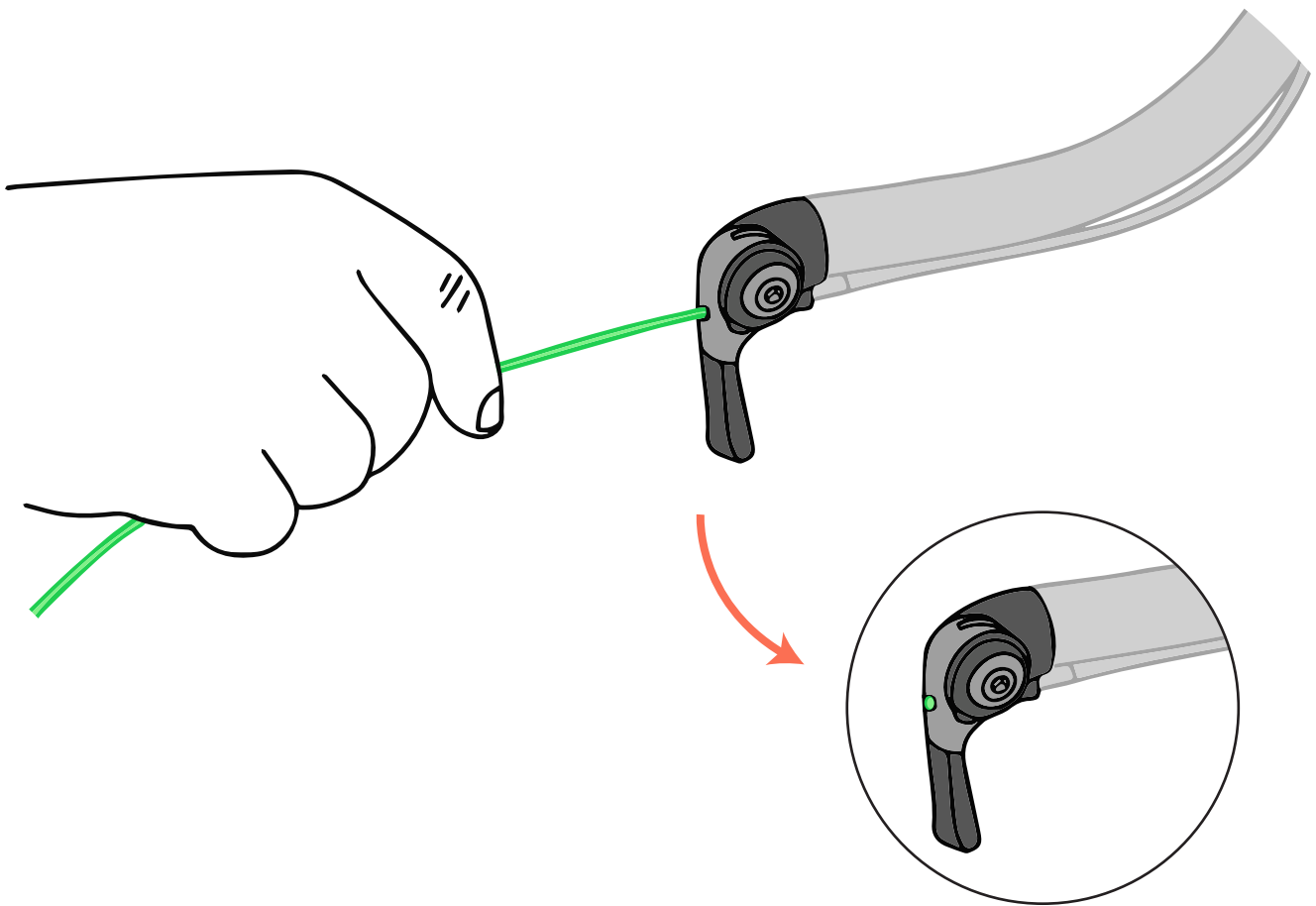


Slow to shift to smaller cogs



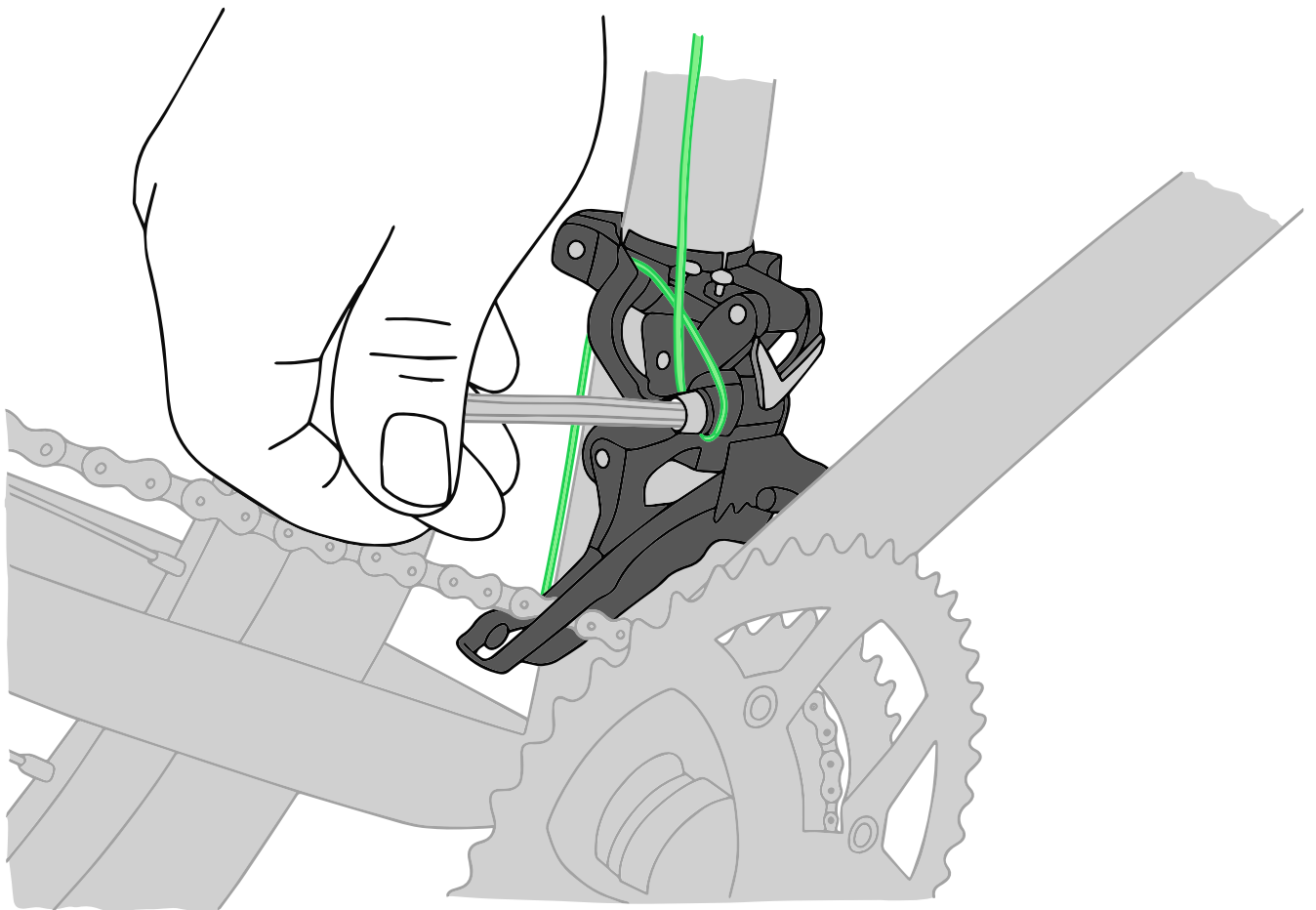
8. Cable Routing (Left Shifter)

With the lever shifted to its lowest setting, insert **the cable** through the hole on the back of the shifter, and out through the base unit into the housing.



9. Front Derailleur Cable Attachment

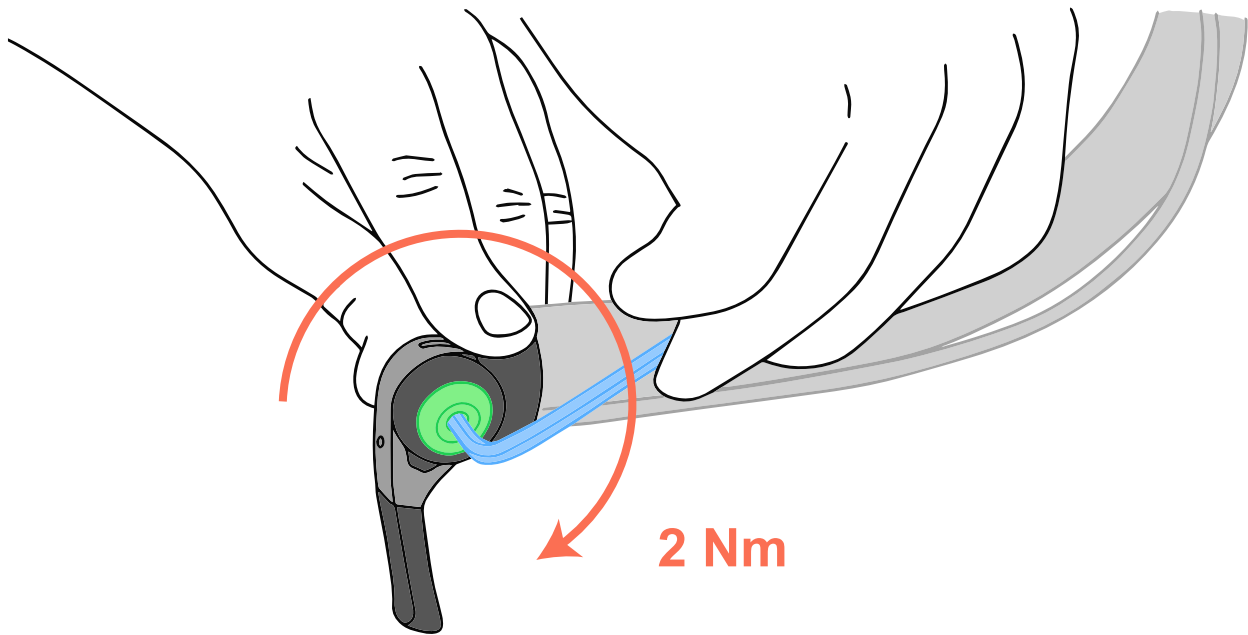
Route the housing and attach **the cable** to the front derailleur according to the derailleur's instruction. Cut the excess **cable** and attach a cable end.



10. Torque Cap Adjustment (Left Shifter)

Part I

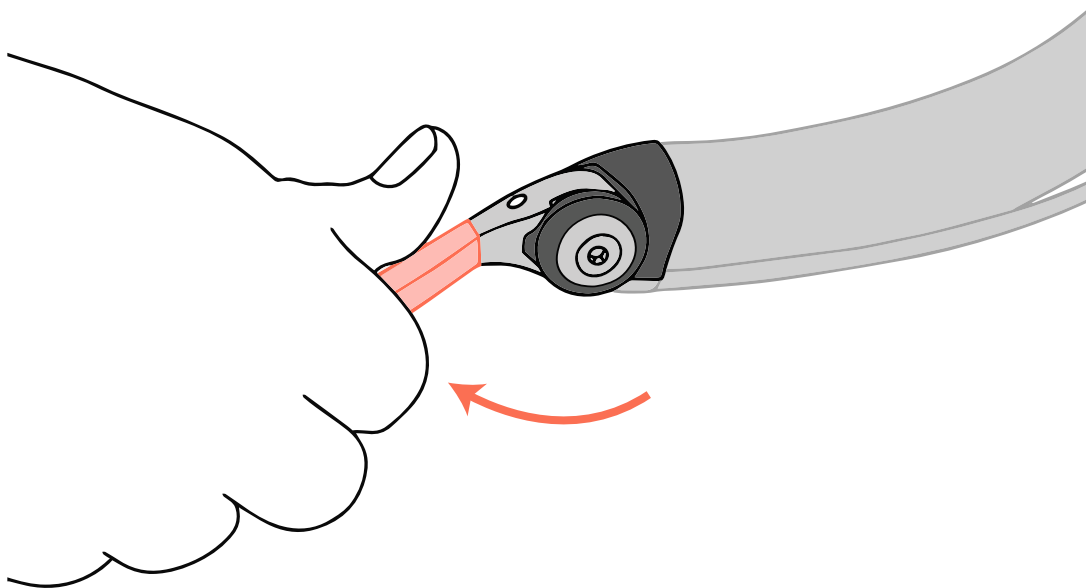
Tighten **the torque cap** with a **4mm hex wrench** to **2 Nm**.



10. Torque Cap Adjustment (Left Shifter)

Part II

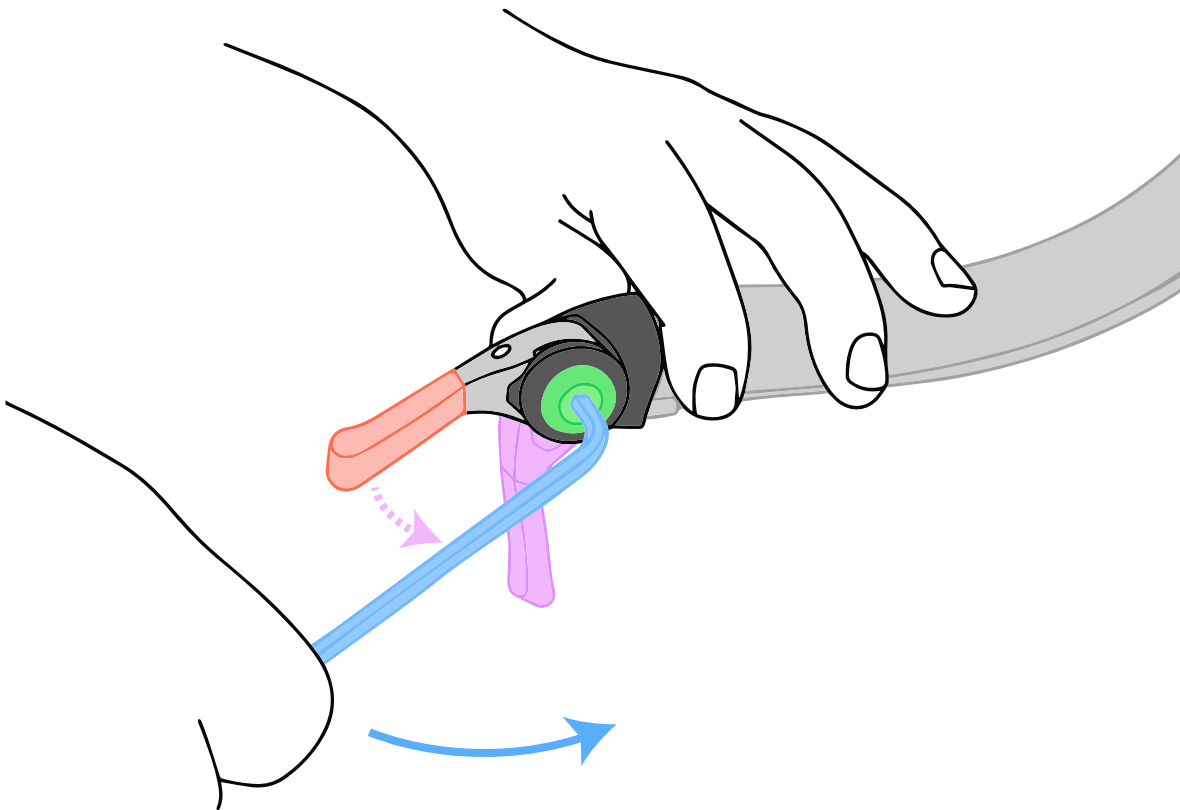
Turn **the lever** clockwise to shift to a larger chainring without moving the pedals.



10. Torque Cap Adjustment (Left Shifter)

Part III

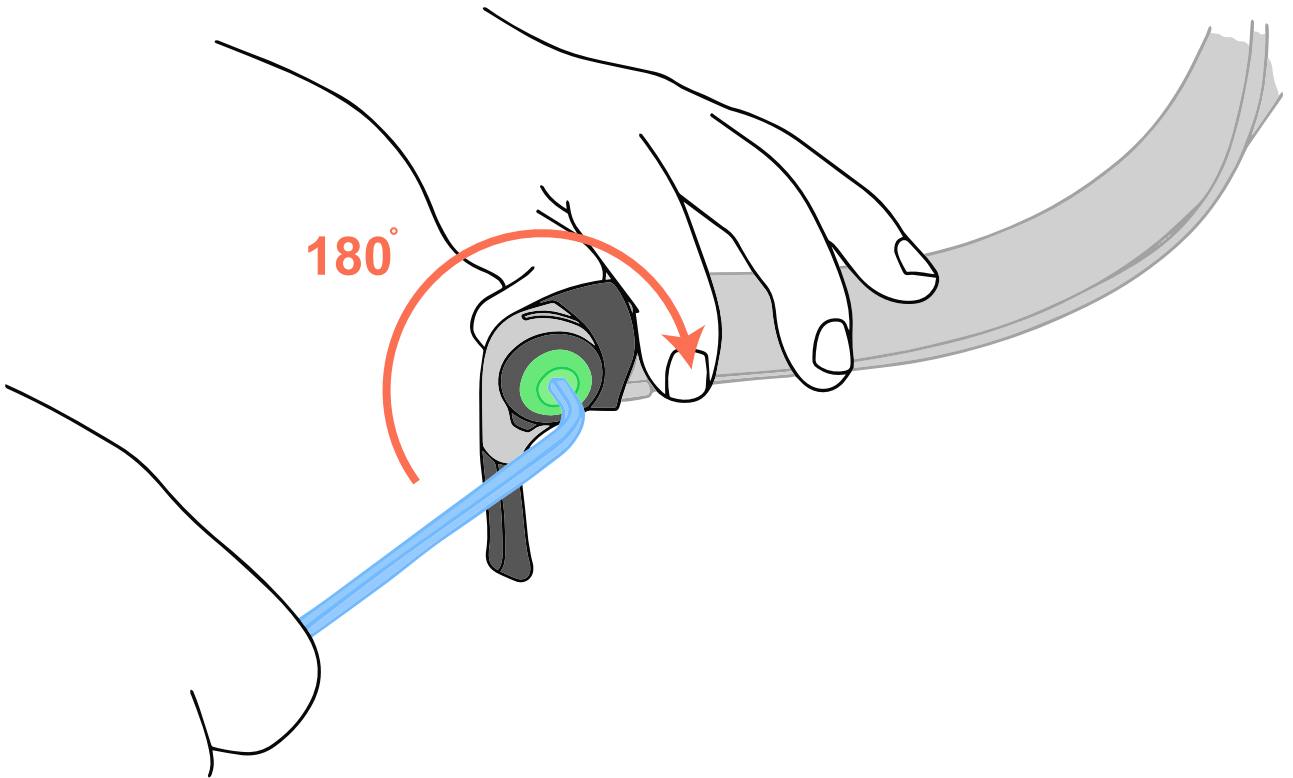
Loosen **the torque cap** with a **4mm hex wrench** until **the lever begins to move**.



10. Torque Cap Adjustment (Left Shifter)

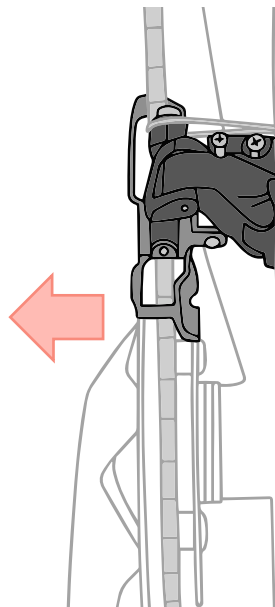
Part IV

Retighten **the torque cap** with a **4mm hex wrench** by **half a rotation**.

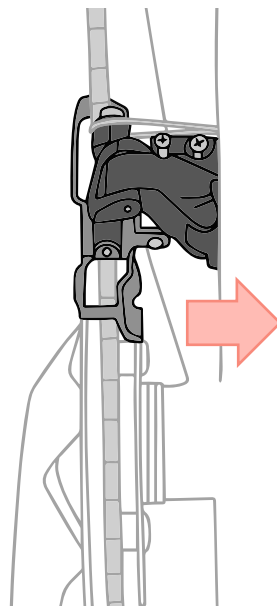
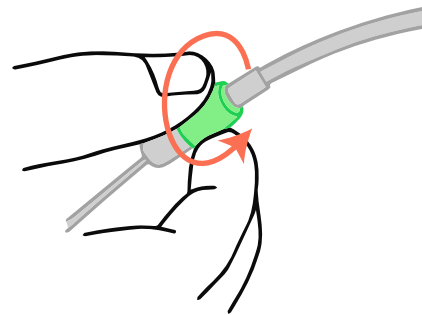


11. Front Derailleur Shifting Adjustment

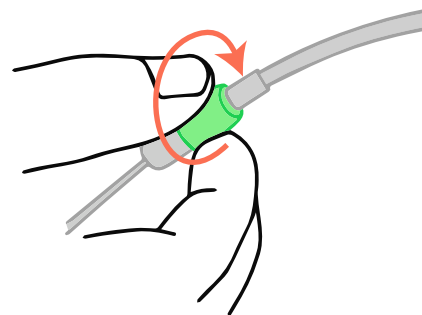
If shifting is slow to move to a larger chainring, turn the **barrel adjuster** counter-clockwise. If the shifting is slow to move to a smaller chainring, turn the **barrel adjuster** clockwise.



Slow to shift to larger chainrings



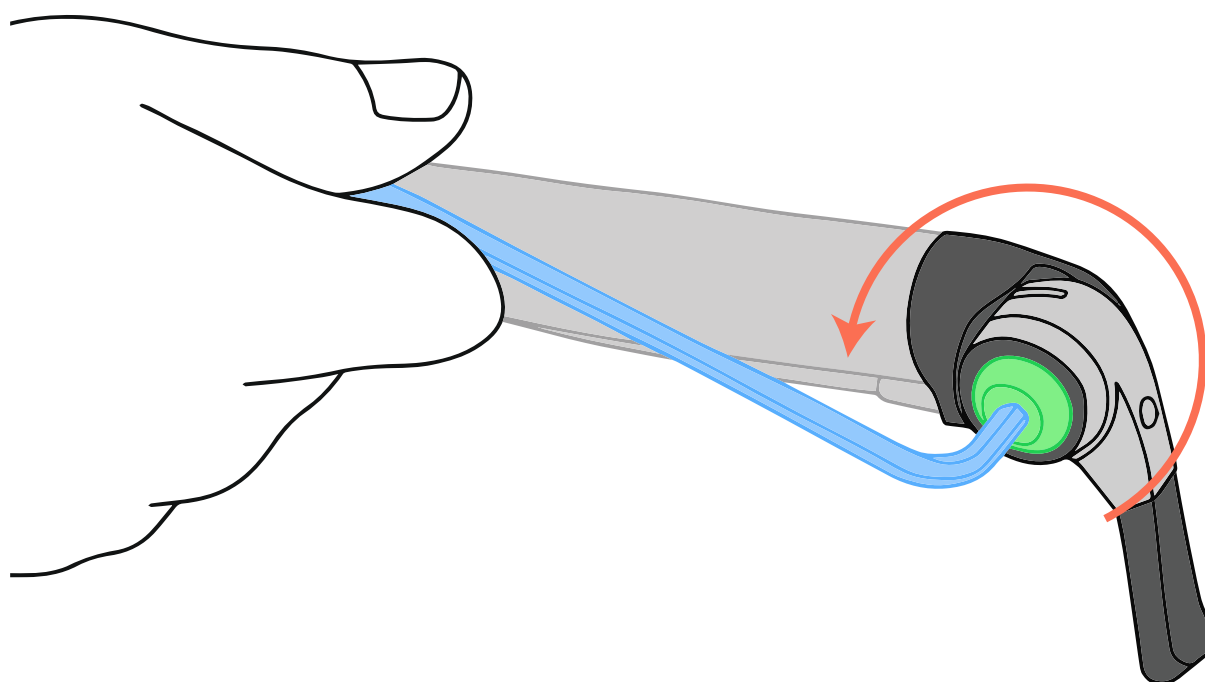
Slow to shift to smaller chainrings



Right Shifter Friction Mode

Part I

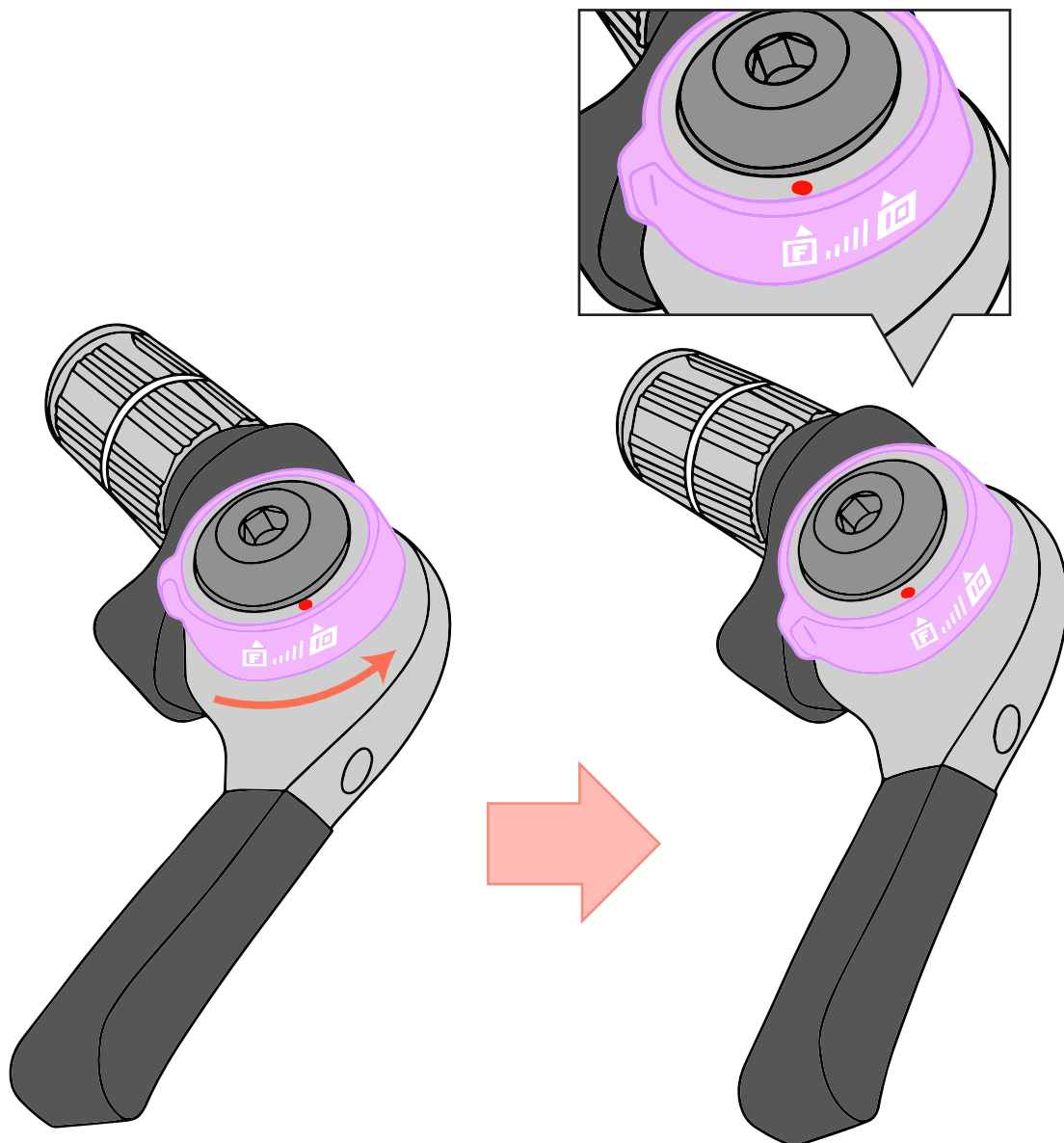
To change the shifting from index to friction mode on the right shifter, loosen **the torque cap** with **a 4mm hex wrench**.



Right Shifter Friction Mode


Part II

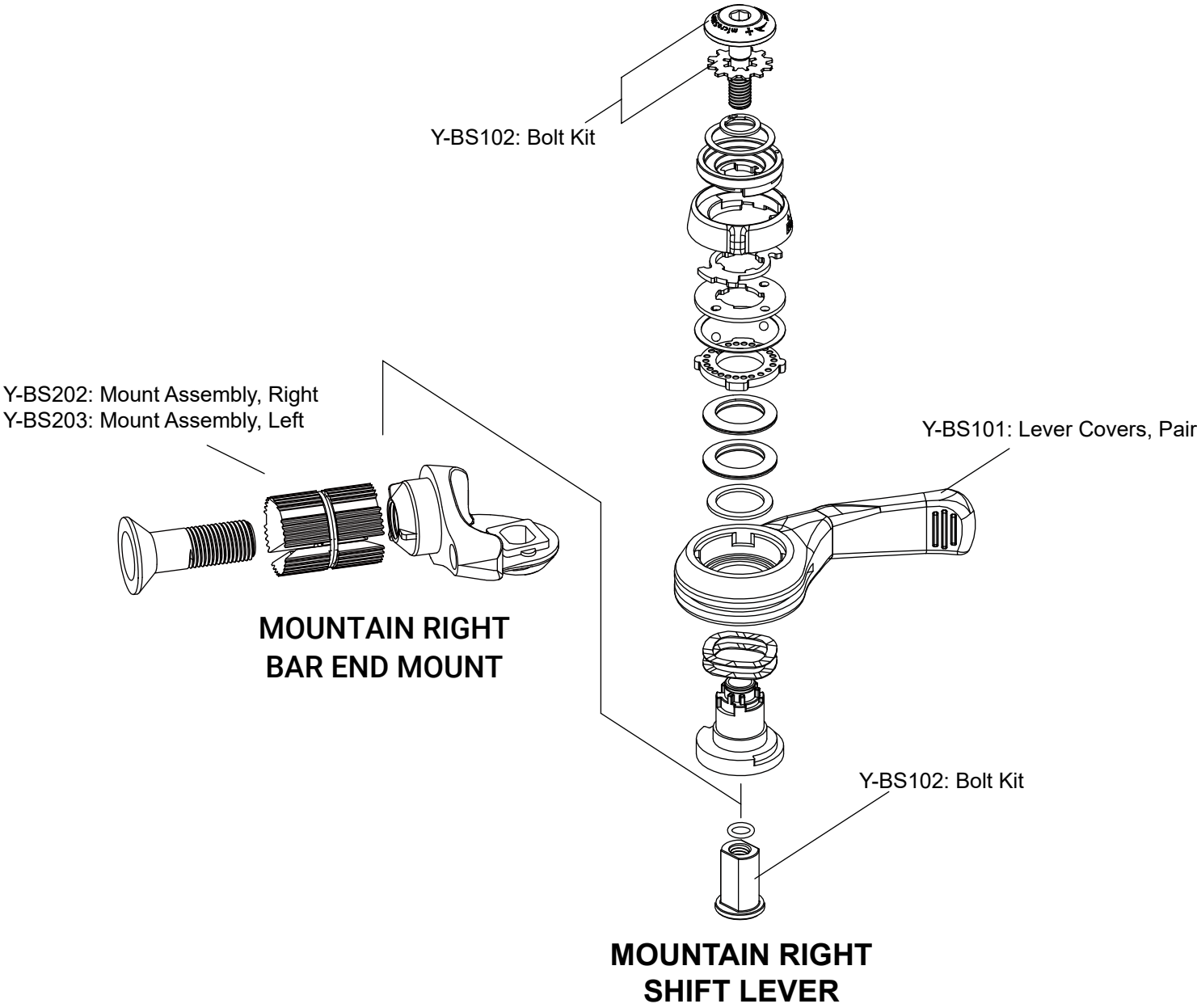
Turn **the dial** under the torque cap until the friction icon lines up with the red dot. Perform installation step 6 (page 13). Tighten the torque cap to 2 Nm, loose until the lever moves, then retighten by a half turn.



Exploded Diagram & Service Parts


Part I

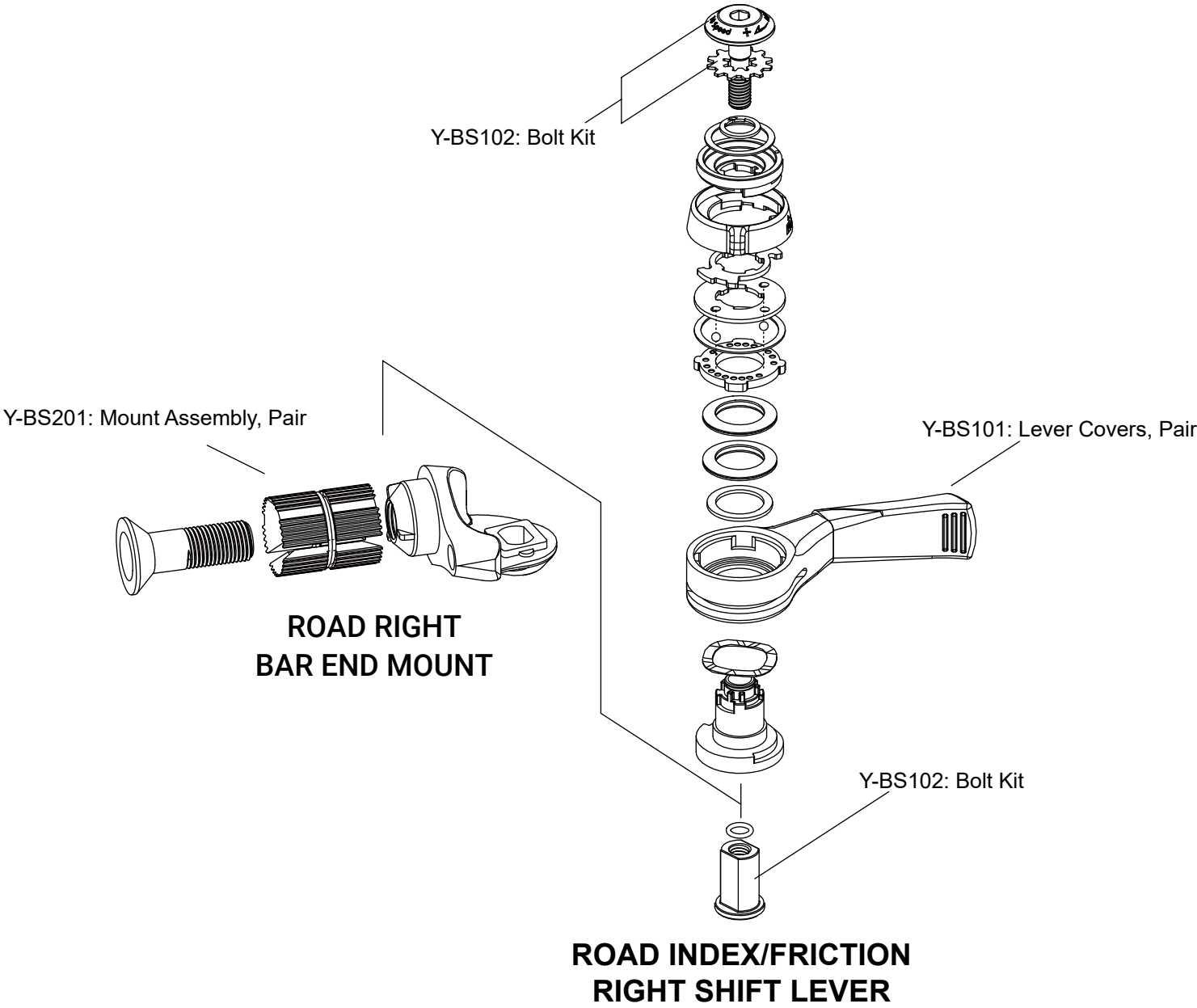
 Applicable models: BS-M12, BS-M11, BS-M10, BS-M19, BS-SR-M12, BS-SR-M11




Exploded Diagram & Service Parts

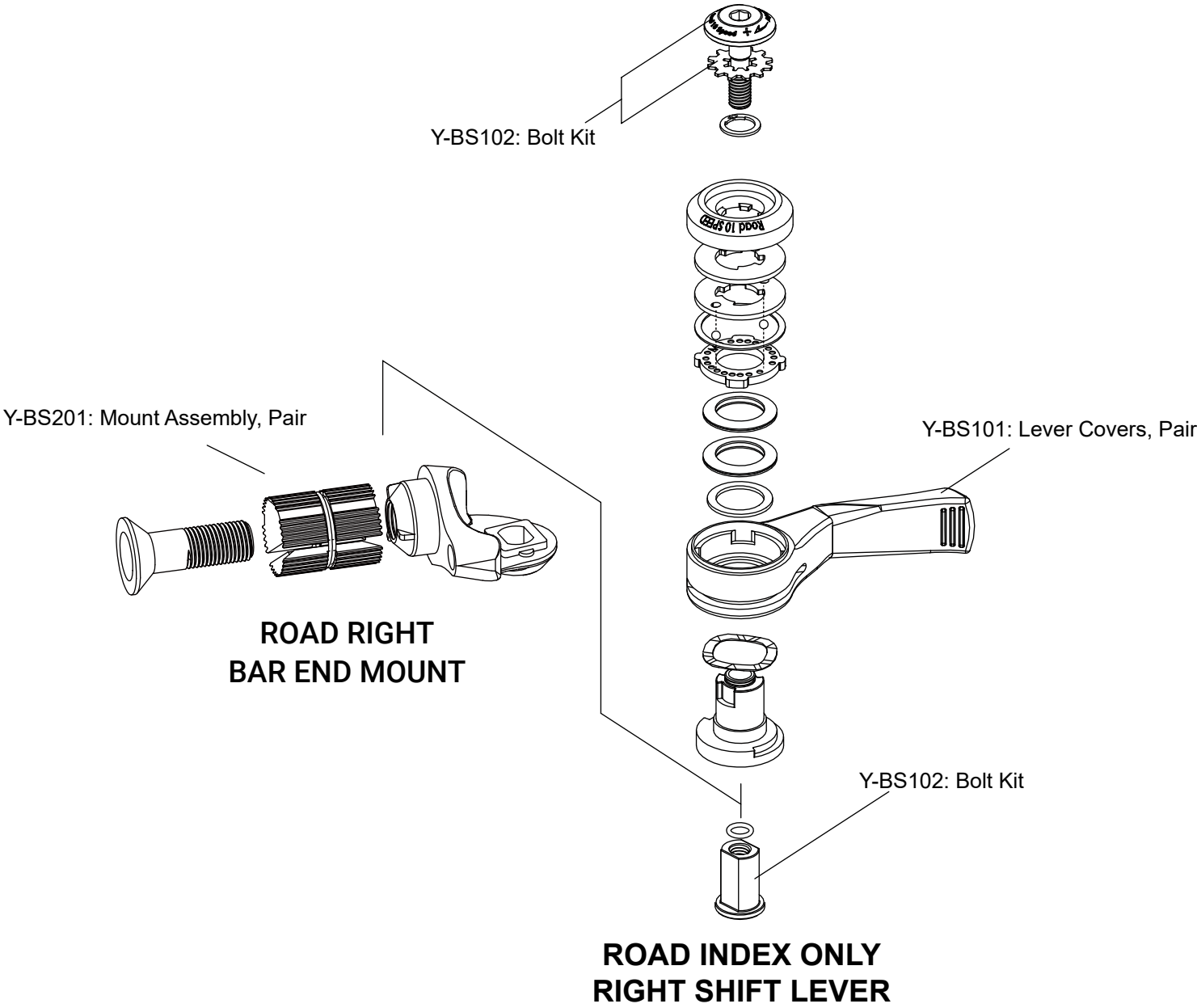
Part II

 Applicable models: BS-T11, BS-T10B, BS-T10, BS-T09, BS-T08



Exploded Diagram & Service Parts

 Applicable models: BS-A11, BS-A10B, BS-A10, BS-A09, BS-A08



microSHIFT

www.microSHIFT.com

International
service-tw@microSHIFT.com

North America
service@microSHIFT.com