



BOTTOM MOUNT

2011 JOHN DEERE GATOR XUV 825i

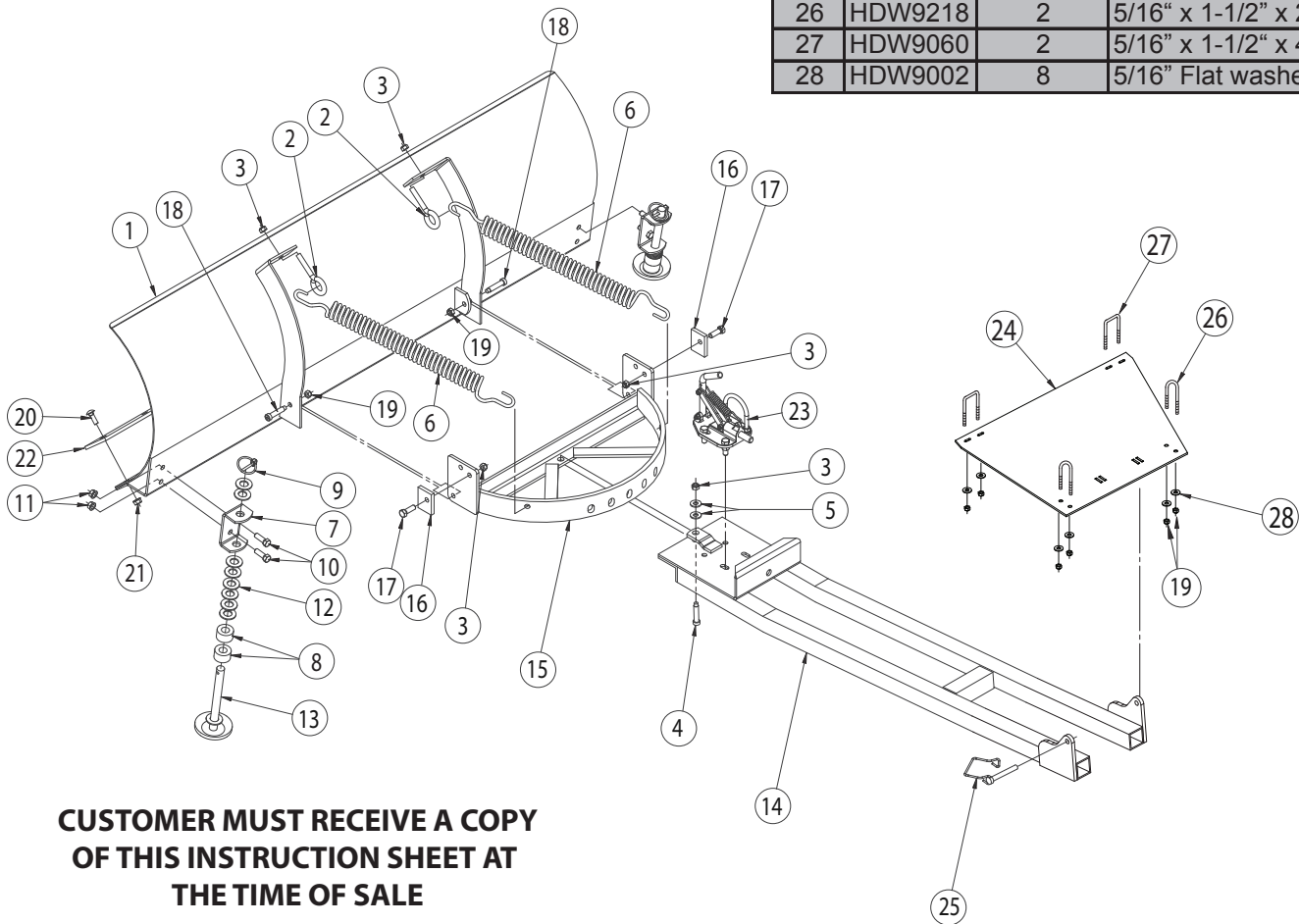
P/N: 4501-0423

NOTE: All shaded items will be located in the bottom mount box.

NOTE: Part numbers and diagrams not applicable when installing a V-Plow.

NOTE: Skids and all hardware for the skids are located in the plow blade box.

Item	Part #	Qty.	Description
1	2552	1	50" Blade
	2560	1	Optional 60" blade
2	HDW2117	2	3/8" X 6" eye bolt
3	HDW7061	5	3/8" Nylock nut
4	HDW2160	1	1/2" x 1" shoulder bolt
5	HDW9025	2	1/2" flat washer
6	HDW2369	2	Spring
7	FG2590	2	Skid bracket
8	HDW2356	4	1.3" x 5/8" x 3/4" spacer
9	HDW2315	2	3/16" x 1-1/4" Lynch pin
10	HDW2106	4	3/8" x 3/4" hex head bolt
11	HDW7060	4	3/8" flanged nut
12	HDW9005	18	5/8" flat washer
13	FG2592	2	Skid
14	2710-70	1	Push tube runner
15	KD60	1	Blade swivel
16	FG2417	2	Blade hinge adjusting stop
17	HDW2100	2	3/8" x 1" hex head bolt
18	HDW2161	2	3/8" x 3/4" shoulder bolt
19	HDW7058	8	5/16" Nylock nut
20	HDW2064	7	5/16" x 1" Carriage bolt
21	HDW7056	7	5/16" flanged nut
22	2568	1	50" wear bar
	2570	1	60" wear bar
23	KD64	1	Blade position pin
24	2758-100	1	Bottom mount
25	HDW2323	2	3/8" x 1-3/4" wire loop pin
26	HDW9218	2	5/16" x 1-1/2" x 2-3/4" U-bolts
27	HDW9060	2	5/16" x 1-1/2" x 4" Sq. U-bolts
28	HDW9002	8	5/16" Flat washers



CUSTOMER MUST RECEIVE A COPY OF THIS INSTRUCTION SHEET AT THE TIME OF SALE

FOR QUESTIONS OR COMMENTS PLEASE CALL: **763-689-4800**

All images used are copyrighted property of CMP and may not be used without permission.

Inst2758

10/28/2011

Push tube/ Swivel/ Blade Assembly Instructions

1. Install the blade swivel (15) onto the front of the push tube (14) using the 1/2" shoulder bolt (4), two 1/2" washers (5), and a 3/8" Nylock nut (3) from the bolt bag per diagram #1. Make sure the flat washers seat properly on the bottom of the shoulder bolt while tightening the nut. Make sure the blade turns freely.
2. Remove the 2 bottom flanged nuts (I) from the u-bolt (D) and 2 from the 3/8" bolts (H) on the blade position pin assembly (23). Run the 2 top flanged nuts up the threads of the u-bolt. Place the blade position pin assembly on the push tube as shown in the Diagram, sliding the blade position pin through one of the oval holes on the swivel and through the rear blade position pin support bracket on the push tube.
3. Re-install the u-bolt and 3/8" bolts and flanged nuts per the Diagram. On the u-bolt, thread the bottom nuts up until they are flush with the bottom of the threads then run the top ones down, making sure the bottom nuts remain flush with the bottom of the u-bolt. Tighten all 4 bottom nuts.
4. Remove the two shoulder bolts (18) from the pivot point brackets on the back of the blade (1). Attach the blade to the swivel by sliding the ears on each side of the swivel into the pivot point brackets on the blade, reinstall the two shoulder bolts and Nylock nut (3) and tighten.
5. Hook the blade springs (6) to the two round holes on either side of the 5 oval holes on the swivel. Hook the eyebolts through the other end of the springs, push the eyebolts through the spring attaching points on the back of the blade and install 3/8" Nylock nuts (3). Spring tension may be increased by tightening both Nylock nuts on the eyebolts evenly.
6. Install the blade stops (16) with the two 3/8" x 1" bolts (17) and 3/8" nuts (3) per the Diagram. Rotating the stops allows you to change the blade pitch to suit changing conditions or materials.

Item	Part #	Qty.	Description
A	PC137	1	Blade position handle
B	PC136	2	Blade position handle/pin straps
C	HDW2250	3	#8 X 1-1/2" Phillips screw
	HDW7088	3	#8 Nylock nut (not visible)
D	HDW2145	1	3/8" X 2" X 3" U-bolt
E	PC138	1	1/2" X 3-1/4" blade position pin
F	HDW2367	1	Blade position pin spring
G	FG3081	1	Blade position pin bracket
H	HDW2106	2	3/8" X 3/4" hex bolt
I	HDW7060	6	3/8" flanged nut

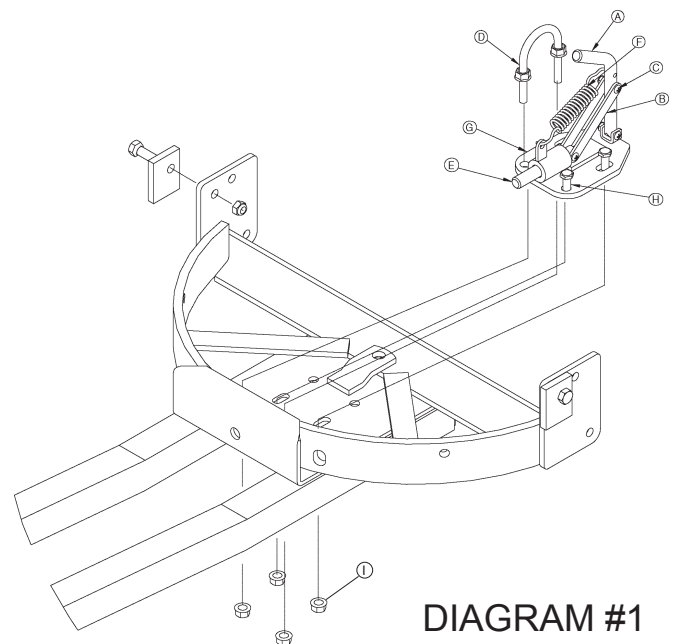
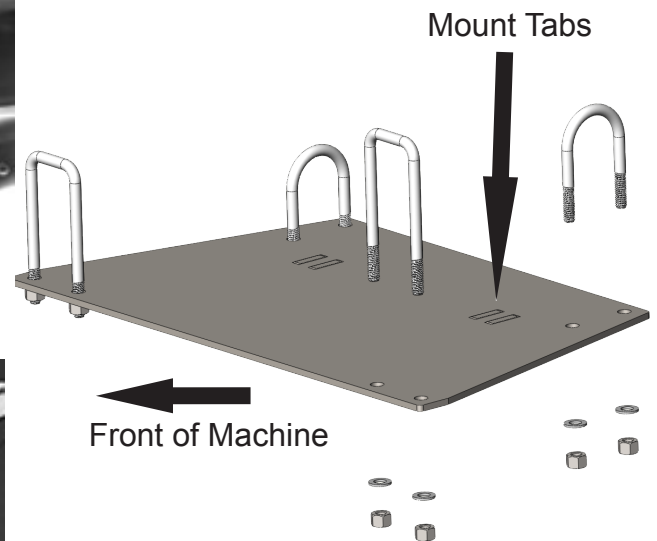
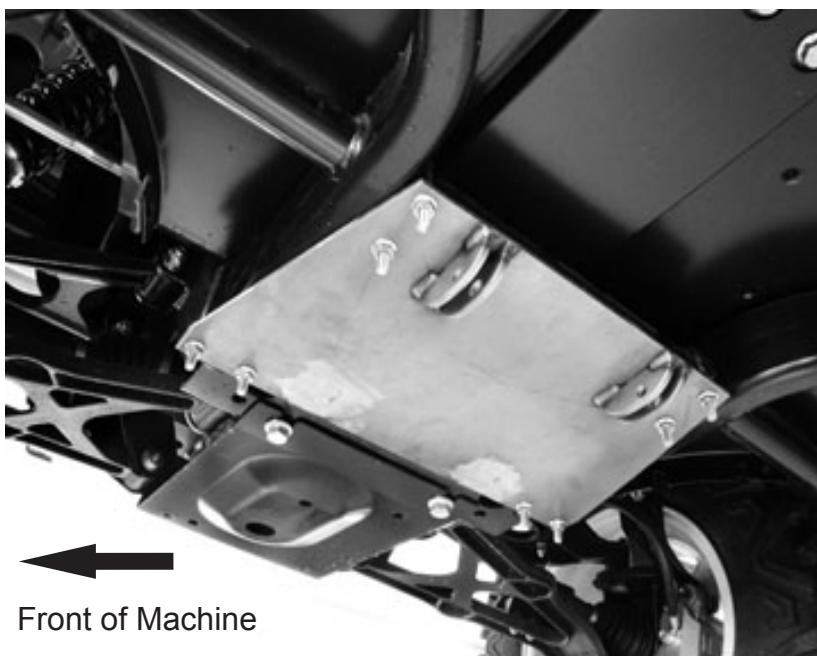


DIAGRAM #1

BOTTOM MOUNT INSTALLATION INSTRUCTIONS

2011 JOHN DEERE GATOR XUV 825i

1. The narrow side of the mount goes toward the REAR of the machine. The tabs on the bottom mount will also be towards the rear of the machine. The front of the mount will use two 1-1/2" x 4" square u-bolts (#27). Hang the front u-bolts in place over the main frame tubes as illustrated below.
2. The rear of the mount will use two 1.5" x 2 - 3/4" round u-bolts (#26). Hang the u-bolts in place over the round horizontal crossmember just INSIDE the main frame rails.
3. Install the bottom mount (#24) onto the u-bolts and install flat washers (#28) and nylock nuts (#19). Tighten firmly. Cut off the excess threads if desired.
4. Slide the blade/push tube assembly under the ATV. Lift the rear of the assembly up and align the holes in the bottom mount tabs and push tube and install the wire loop pins (#25).



*****Operating Instructions*****

Read Before Operating

CUSTOMER MUST RECEIVE A COPY OF THESE OPERATING INSTRUCTIONS AT THE TIME OF SALE

*****DANGER*****

Remove bottom mount before trail riding! There is reduced ground clearance with bottom mount installed.

TO AVOID SERIOUS INJURY OR DEATH:

1. Do not exceed a speed of 5 mph (8 kph) when the blade is installed.
2. Use extreme caution when operating the plow on rough terrain, slopes, steep grades or on slippery surfaces.
3. Stay away from the blade and all moving parts during operation.
4. When plowing snow or dirt into a pile, slow down before reaching the pile. DO NOT ram the pile with the blade. Start backing up before raising the blade.
5. Be aware of objects that may be hidden beneath the snow.
6. ATV braking and stability may be affected by the addition of an accessory or attachment. Be aware of changing conditions on slopes and wet or slippery surfaces.

*****WARNING*****

Remove bottom mount before trail riding! There is reduced ground clearance with bottom mount installed.

TO AVOID PERSONAL OR OTHER INJURY:

1. Read the Blade Hardware Mounting Instructions, the ATV operator's manual and all safety labels before operating.
2. Wear safety glasses, protective head gear and shoes as recommended in the ATV operator's manual.
3. Do not allow riders on the blade or ATV.
4. Keep bystanders away from the blade and ATV at all times.
5. Before adjusting the blade angle, stop the ATV engine, set and lock the brakes and raise and lock the blade into the up position. Do not lift the blade by hand. Always use the lift handle or the electric lifting device.
6. Before adjusting the blade height, lower the blade to the down position.
7. When the blade is not in use, stop the ATV engine, lock the brakes and lower the blade to the down position.

*****OPERATION*****

FOR SAFE OPERATION:

1. The blade and hardware were designed with safety in mind. To protect you and your ATV, certain parts were designed to fail when the equipment is over stressed. For this reason, wire loop pins are not warranted.
2. To adjust the blade angle, lock the blade in the up position, push (or pull) the blade position pin handle and turn the blade to the desired position. Release the handle and make sure the pin engages a position hole in the swivel.
3. The blade is raised by pulling back on the lift handle and lowered by letting the lift handle go forward or using the up and down switch for electric lifts or winches. The blade skids are adjustable to allow the blade to be a constant distance off the ground.
4. The blade is designed to trip when it strikes an object or digs in too deeply. When the pressure is eased, the blade springs back into position. Blade trip tension is adjusted by tightening or loosening the lock nuts on the top of the eyebolts on the back of the blade. The spring tension should be the same for both springs. This can be achieved by measuring the distance from the swivel to the eye bolt. They should be the same.
5. Do not exceed a speed of 5 mph (8 kph) when the blade is installed.
6. Use extreme caution when operating the blade on rough terrain, slopes, steep grades or on slippery surfaces.
7. Stay away from the blade and all moving parts during operation.
8. Be aware of objects that may be hidden beneath the snow.
9. Wear safety glasses, protective headgear and shoes as recommended in the ATV operator's manual.
10. Do not allow riders on the blade or ATV.
11. Keep bystanders away from the blade and the ATV at all times.
12. When the blade is not in use, stop the ATV engine, lock the brakes and lower the blade to the down position.
13. When plowing snow or dirt into a pile, slow down before reaching the pile. DO NOT ram the pile with the blade. Start backing up before raising the blade.

www.cmp-wwm.com

For questions or comments, please call: 763-689-4800