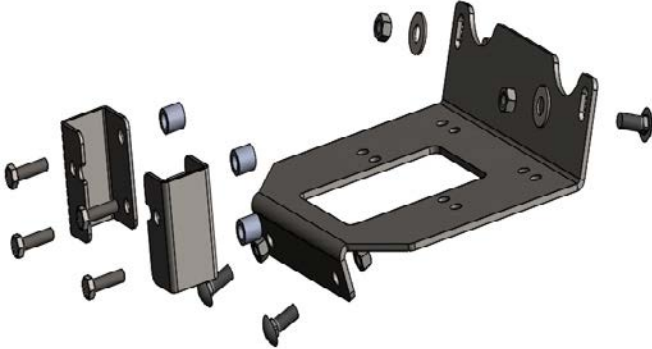




WINCH MOUNT INSTRUCTIONS
POLARIS RZR 900/1000/TURBO
 PART# 4505-0699



QTY.	PART#	DESCRIPTION
1	1631-1	Winch Mount Plate
1	1608-2	Right Fairlead Bracket
1	1608-3	Left Fairlead Bracket
4	HDW2122	3/8 x 1 Carriage Bolt
4	HDW7061	3/8 Nylock Nut
2	HDW9001	3/8 Flat Washer
4	HDW1061	8mm x 30mm Hex Bolt
4	HDW9406	5/8 x 5/8 Steel Spacer

Remove the front plastic cover over the fairlead opening.

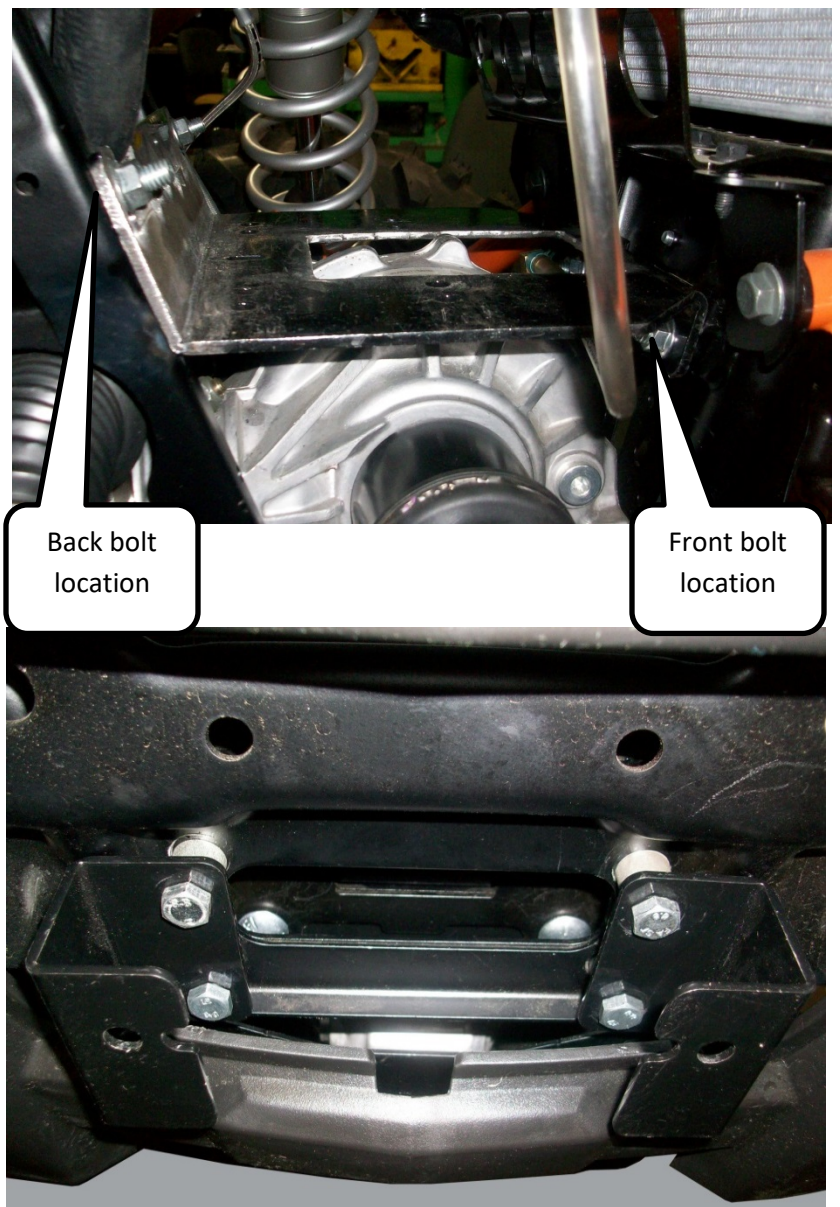
The mount will bolt to existing holes in machine. Slide mount into place as shown with the tall end toward the back of machine going upward. This will align with the square holes in the frame upright. Use the 3/8" x 1" carriage bolts, washers and nylock nuts to hold in place. Attach the front to the holes in the front cross member and secure with the remaining 3/8" x 1" carriage bolts and nylock nuts.

Attach the fairlead bracket to front cross member with the four steel spacers going between the front end and brackets. Use the four 8mm x 30mm hex bolts to secure bracket in place as illustrated.

NOTE: Some models will not require the spacer for the fairlead bracket.

Tighten all bolt securely.

Wire winch to winch manufacturer's instructions. Bolt fairlead in place with bolts provided with winch.



FOR QUESTIONS OR COMMENTS PLEASE CALL: 320-964-1616 (7:00 to 4:30 CST Monday through Thursday).

INST1631PF