



WINCH MOUNT INSTALLATION INSTRUCTIONS

HONDA PIONEER 1000-5

PART# 4505-0702

PART#	QTY.	DESCRIPTION
1682-1	1	Winch Mount
HDW2050	2	5/16 x 3/4 Hex Bolt
HDW9002	2	5/16 Flat Washer
HDW7058	2	5/16 Nylock Nut
HDW1041	2	8mm Nylock Nut

Remove the front bumper.

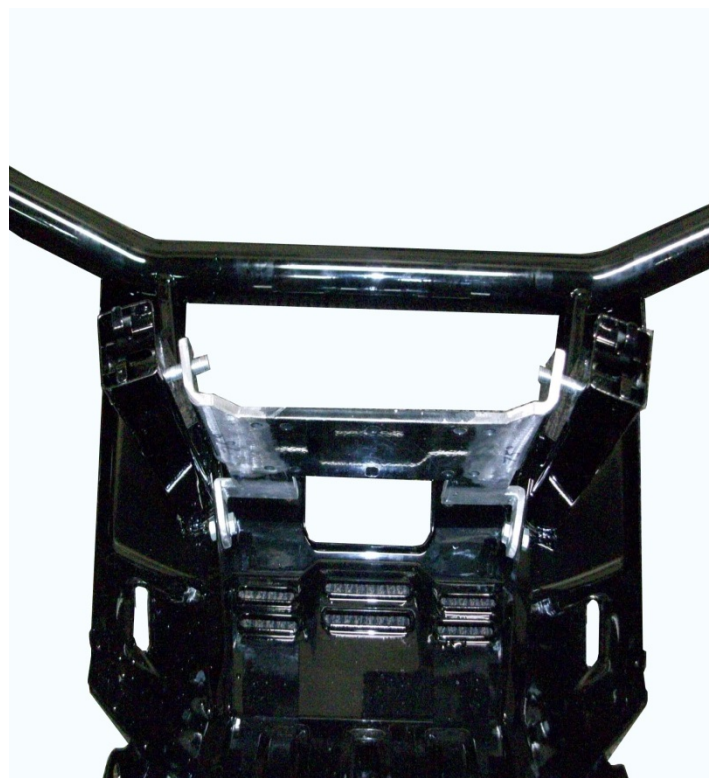
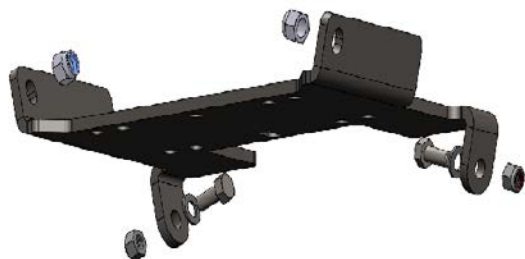
(NOTE: The machine only has a bolt pattern for a large fairlead that has a 6" bolt pattern. Winch will bolt on the bottom side of mount plate.)

First remove front bumper and attach winch mount to the front bumper. Bolt the front portion of the winch mount to the front bumper using the 5/16" x 3/4" hex bolts, washers and nylock nuts. Leave loose.

Place the rear portion up in place using the bolts previously removed. Place the bolt through the bumper tube frame holes and through winch mount. This aligns the winch mount.

Tighten the front bolts. **(NOTE: At this point you may attach the winch.)**

Next remove the back bolt you put in to align the winch mount. Slide the bumper with winch mount in place carefully to keep winch mount in line. After bumper with winch mount is back in place, replace the front leg bolt going through the bumper leg. As you tighten it, it will go through the winch mount. Place nylock nuts on bolts and tighten. Repeat on other side. The back-bumper bolt will go back in place. Tighten. **(NOTE: To tighten nylock nuts on forward bolts it is easiest if you use a ratchet with long extension and swivel knuckle and reach in from opposite side.)**



FOR QUESTIONS OR COMMENTS PLEASE CALL: 320-964-1616 (7:00 to 4:30 CST Monday through Thursday).

INST1682PF