



MOTORCYCLE LIGHTING

www.namzccp.com

NAMZ Custom Cycle Products, Inc

1440 Ulmer Avenue
Oreland, PA 19075

Technical Support is available Monday-Friday, 9am-5pm EST via email at tech@namzccp.com or call us at 1-877-277-NAMZ.

Part Number: LLC-LRH-BC, LLC-LRH-BB, LLC-LRHP-BB, LLC-LRHP-CC, LLC-LRHP-BC & LLC-LRHP-CB



Fitment: LLC-LRH-BC, LLC-LRH-BB, LLC-LRHP-BB, LLC-LRHP-CC, LLC-LRHP-BC & LLC-LRHP-CB - Road Glide dual 5.75" hi/low beam **Chrome or Black** LED Headlamps with **Chrome or Black** Housings and fits Road Glide models 1998 through 2013.

This product is intended: Before LED headlamps there were H4 Halogen Lamps. They were bright, but generated a lot of heat and the projection of light was not the best. Our LED headlamps pack some serious light all for a very affordable price. Boasting over 3000-lumens and a 6000k color, these are a close match to the warmth of Halogen with a broader projection and no heat. A medium level of difficulty and requires outer fairing removal.

What is included in this kit?

- (2) Chrome or Black LED headlamps
- Chrome or Black bezel
- Installation hardware

Recommended Tools:

- #2 Phillips Screwdriver
- T27 Torx Bit
- Socket set
- Open end wrenches
- Pry tool

WARNING!

This product should be installed by a professional motorcycle technician or reputable shop/ dealership.

Improper installation may result in loss of headlight and rear running light functions.

1. Be sure the ignition switch is in the OFF position!
NOTE: Before you install our LED headlight, be prepared to take your time and have the space need to do the job properly. Also set aside a moving blanket or towel for the outer fairing once removed.
2. Begin by removing the outer fairing using the T27 Torx Bit. There will be (2) screws on either side, right below the storage compartments and (1) more on each side under the top triple tree.
3. Once removed, the outer fairing is being held in place by the (3) windscreen screws.
NOTE: These screws are generally a T27 Torx Bit but may also be 5/32" Allen Head.
4. With an extra set of hands, remove the last screw with someone supporting the outer fairing. Once removed, reach behind the headlamp and disconnect the headlamp harness.
5. The outer fairing can be removed and stored on the towel or moving blanket for safe keeping.
6. Now remove the OEM Headlight. *(Refer to your service manual for more detailed information)*
7. In our headlamp box, find the mounting clips and Ball End Adjuster screws. Install adjusters on back of LED light using supplied brackets and self-tapping screws. Do not over tighten screws. Install Headlight Mounting Clips on Adjuster screws.
8. Position Inner Support Bracket on fairing aligning the L-Shaped notches. Mark and drill the two holes for the support bracket using 9/32" bit. Using the supplied hardware install support plates.
9. Align Mounting Clips with fairing and support plate and press firmly into place.
NOTE: Be sure to check headlamp alignment before re-installing the outer fairing.
10. Install fairing and ensure all proper connections are made.
11. Once the fairing is back in place securely, install headlamp bezel by simply snapping into place.
12. Aim headlight using adjuster screws as outlined in your service manual.

Letric Lighting Co.

MOTORCYCLE LIGHTING

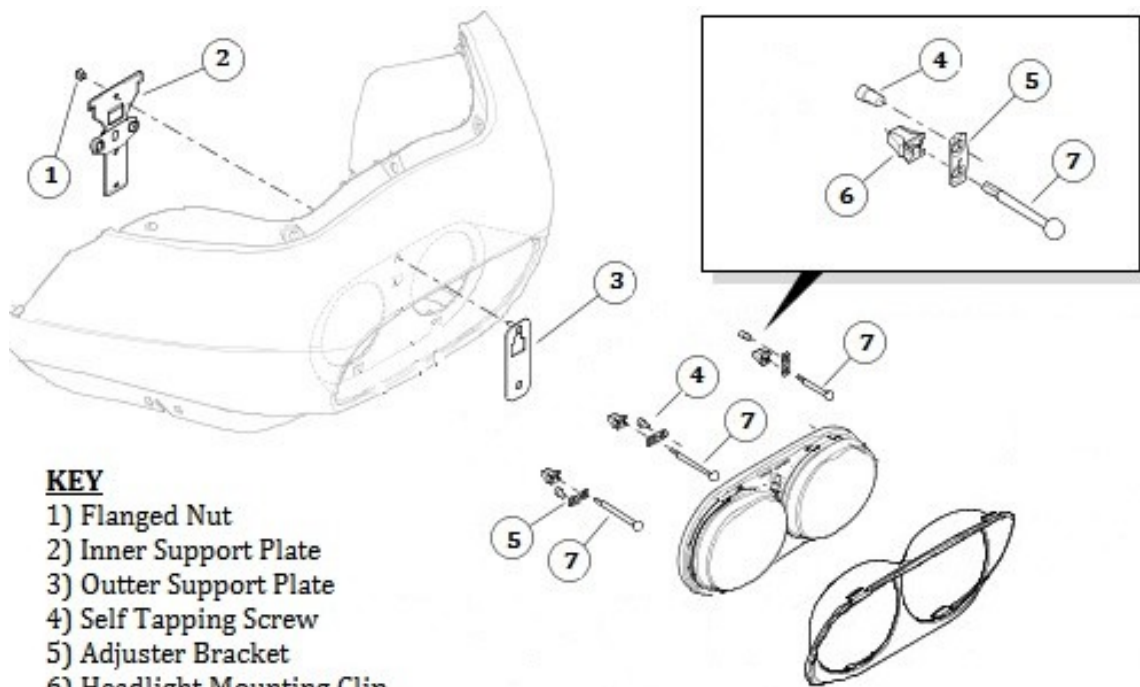
www.namzccp.com

NAMZ Custom Cycle Products, Inc

1440 Ulmer Avenue
Oreland, PA 19075

Technical Support is available Monday-Friday, 9am-5pm EST via email at tech@namzccp.com or call us at 1-877-277-NAMZ.

See installation reference pictures below.



KEY

- 1) Flanged Nut
- 2) Inner Support Plate
- 3) Outer Support Plate
- 4) Self Tapping Screw
- 5) Adjuster Bracket
- 6) Headlight Mounting Clip
- 7) Ball End Adjuster Screw