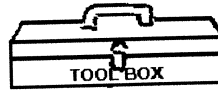
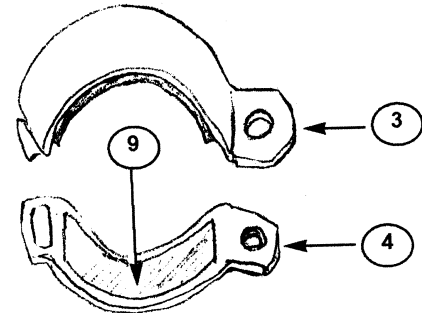


**PARTS LIST**

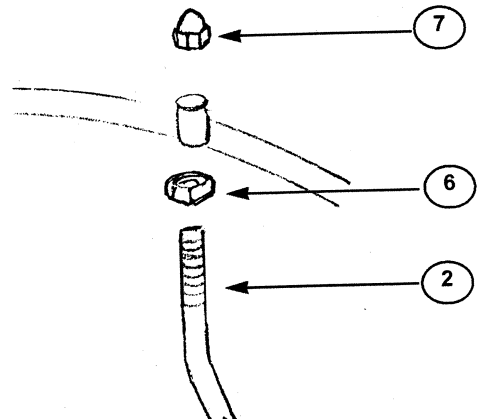
Index No.	Description	Part No.	Qty.
1.	Windshield Assembly, N2350		1
<b>KIT CHI</b>			
2.	Upright Chrome		2
<b>BAG 118</b>			
3.	Clamp Half, Male Chrome		2
4.	Clamp Half, Female Chrome		2
5.	Bracket, Right Angle Chrome		2
6.	Hex Nut, 3/8-16, Chrome		2
7.	Acorn Nut, 3/8-16, Chrome		2
8.	Cap Screw, 3/8-16x3/4", Chr		2
9.	Clamp Spacer, Rubber		2
<b>BAG 119</b>			
10.	Eyebolt, Chrome		2
11.	Flange Nut, 3/8-16, Chrome		2
12.	Lock Washer, 3/8", Chrome		2
13.	Cup Spacer, Chrome		2



**Tools used in all installations:**  
Wrench, Combination, 9/16" 2  
Heavy Scissors or Snips 1


**A. PREPARATION**

1. With the heavy Scissors, cut the Rubber Clamp Spacers in half. Leaving 4 pieces 2.5" long by 1.5" wide.
2. Adhere the Rubber Clamp Spacers to the inside of the Clamp Halves. Make sure the Spacers do not cover the attachment hooks.
3. Install the 3/8-16 Hex Nuts onto the Uprights, all the way to the end of the thread.
4. Insert the Uprights through the mounting lugs on the windshield so the Uprights point toward the bottom of the shield.
5. Install (2) 3/8-16 Acorn Nuts onto the end of the Uprights, loosely securing the Uprights to the shield.

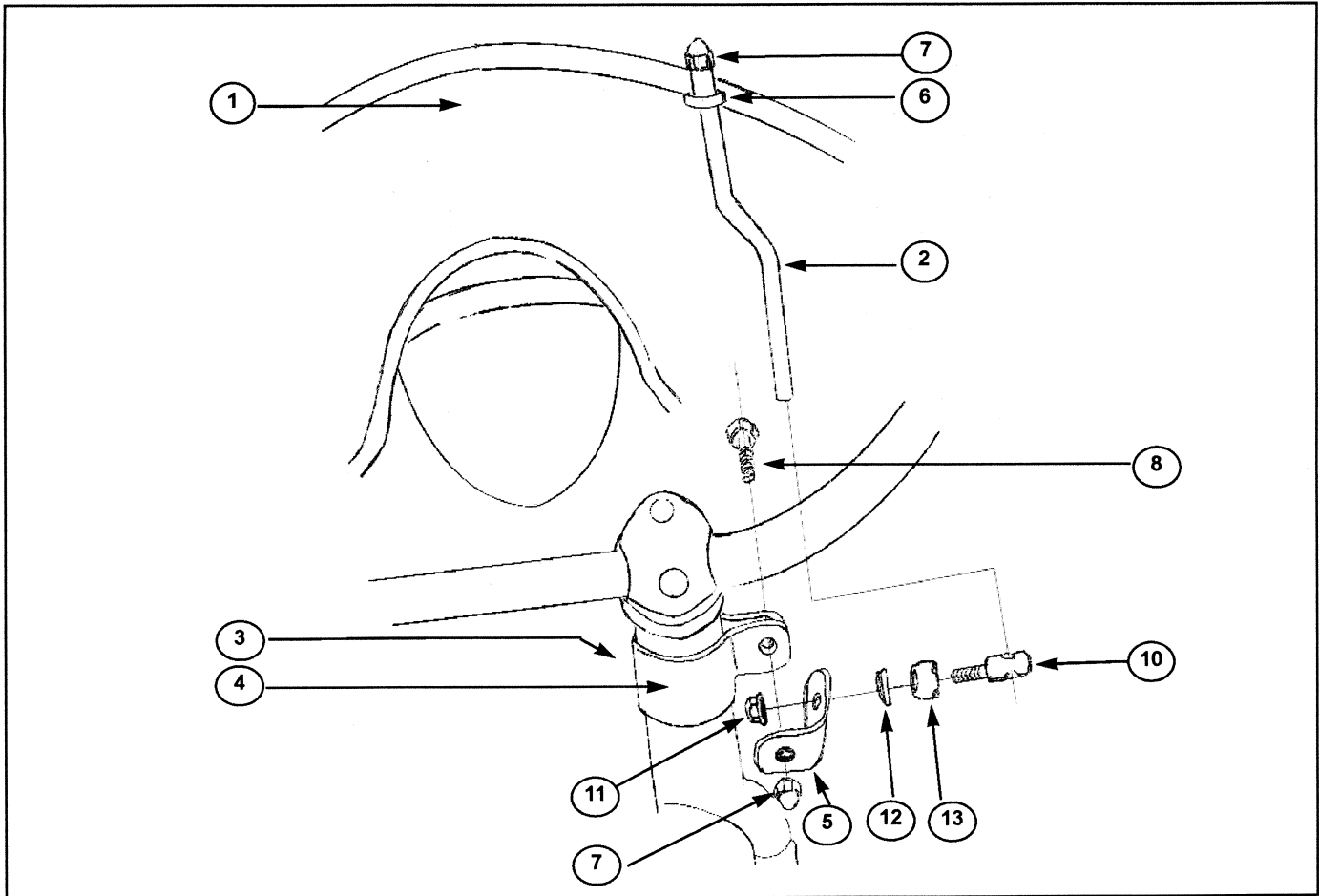


Installation continued on page 2.

**MAINTENANCE**

To clean the windshield, wash with a clean soft cloth, plenty of warm water and, if necessary, a non-abrasive soap such as dishwashing liquid. Flannel or soft chamois make good cleaning cloths. Paint, glue residue or grease removal: Moisten cotton with Naphtha or Turpentine followed by a wash as above. Apply a high quality plastic cleaner, such as McGuiar's Mirror-Glaze MG-17 or Novus #2, to the screen. This will leave a protective coating in the screen making future cleanings easier.

Maintain the chrome finish with any quality chrome cleaner and / or polish.



## B. INSTALLATION

**Note:** an assistant will be very helpful in installing and adjusting the Windshield.

1. Install the Clamp Halves (3) and (4) onto the handlebar risers, at the top of the smooth section of the riser. The clamps will point straight out to the side. Place a 3/8-16 x 3/4 Cap Screw (8) through the clamp bolt holes from the front of the vehicle. Hold the clamp in place.
2. Place an angle bracket (5) against the rear of the clamp, pointing forward, and attach using a 3/8-16 Acorn Nut (7). Check the alignment of the Angle Bracket to the Clamps. Tighten the Acorn Nuts and Cap Screws to 10 ft lbs torque.
3. Repeat steps B1 and B2 with on the other handlebar riser.
4. Install the Eyebolts (10) onto the Angle Brackets (5). Place a Cup Spacer (13) on an Eyebolt, then a Lock Washer (12). Place the Eyebolt through its mounting hole on the Angle Bracket, then install a 3/8-16 Flange Nut (11). Leave loose.
5. Repeat the Eyebolt installation on the other Angle Bracket.
6. Position the Windshield in front of the handlebar. Insert the Uprights through the "eye" of the Eyebolts.
7. Adjust the Windshield so it is centered right to left. Tighten the Flange Nuts (11) on the Eyebolts. Tighten the Acorn Nuts (7) on the Uprights.

## C: ADJUSTMENT;

1. To adjust the height of the Windshield, slide the Uprights up or down in the Eyebolts.
2. To adjust the rake of the Windshield, rotate the Eyebolts and Uprights forward or back.
3. Tighten all fasteners to 10 ft lbs torque.