



Shimano T47 E.B.

Threaded External Bearing BB
For Shimano cranks only

SAFETY INFORMATION - READ BEFORE RIDE

Since specific tools and experience are necessary for proper installation, it is recommended that the product be installed by a qualified bicycle technician.

Read the service instructions of your crank carefully prior to installing the parts. Loose, worn or damaged parts may cause riding problems and serious injury may occur as a result. If installation and adjustments are not carried out correctly, the chain may come off and this may cause you to fall off the bicycle which could result in serious injury. **Read these instructions carefully, and keep them for later use.**

- Ensure that the frame BB shell is clean.
- Before riding the bicycle, check that there is no play or looseness in the bottom bracket connection. Also, be sure to retighten the crank arms and pedals at periodic intervals.
- If you feel any looseness or ‘play’ in the bearings, the bottom bracket should be inspected/replaced.
- Be sure to read the instructions for your front chainrings/crank in conjunction with these service instructions.
- **Do not wash the bottom bracket with high-pressure jets of water.**
- For maximum performance it is required to remove and periodically inspect/clean your Praxis Works bottom bracket.
- **Parts are not guaranteed against natural wear or deterioration resulting from normal use.**
- For any questions regarding methods of installation, adjustment, maintenance or operation, please contact a professional bicycle dealer or call Praxis Works.
- Praxis Works assumes no responsibility for damages or injury related to improperly installed components.

READ THE STEP-BY-STEP INSTALLATION INSTRUCTIONS THAT ARE PROVIDED ON THE OTHER SIDE.

WARRANTY

- Praxis Works Bottom Bracket products are warrantied to be free from defects in materials or workmanship for two years after original purchase. The warranty is non-transferable and valid to the original purchaser of the product only.
- Any attempt to modify the product in any way such as drilling, grinding or painting will void the warranty.
- This warranty is not valid for “abused” or neglected products, or products that are damaged by improper installation.
- If a defect is found, our entire liability and your sole remedy shall be, at our option, free repair or replacement of the Praxis product.
- Except as expressly required by law, Praxis Works shall not be held liable for any indirect, special, or consequential damages.

THIS WRITTEN EXPRESS WARRANTY IS IN LIEU OF ALL OTHER WARRANTIES, IMPLIED OR EXPRESSED. This warranty gives you specific legal rights, and you may also have other rights which vary state to state. **For more information on warranty policy and instructions for completing a warranty claim, check out the Full Warranty Policy found at our website. www.praxis-works.com**

Shimano T47 E.B. Compatibility and Spec

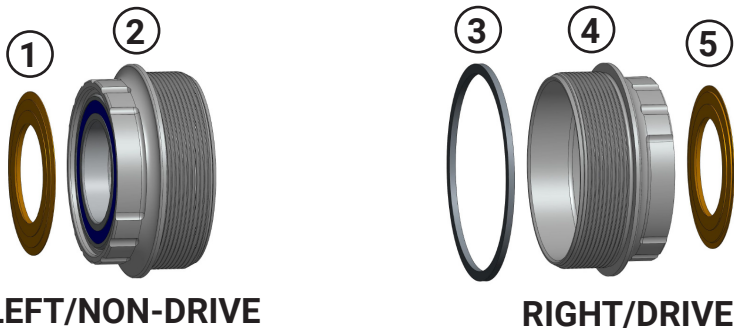
CRANKSET	Compatible with Shimano Hollowtech II cranksets	
FRAME SHELL	T47 68mm Road Frames	T47 73mm MTB Frames
FRONT DERAILLEUR	Braze-on, Clamp-on, or Direct Mount	

REQUIRED TOOLS

- One Shimano 16-Notch BB Tool
- 3/8" Drive Torque Wrench
- Anti-Seize Compound
- Waterproof Grease

Included Parts

Number	Part	Qty
①	Shimano Dust Cover	1
②	LEFT/NON-DRIVE Cup with 24mm ID Bearing	1
③	1.5mm Spacer for MTB use	1
④	RIGHT/DRIVE Cup with 24mm ID Bearing	1
⑤	Shimano Dust Cover	1

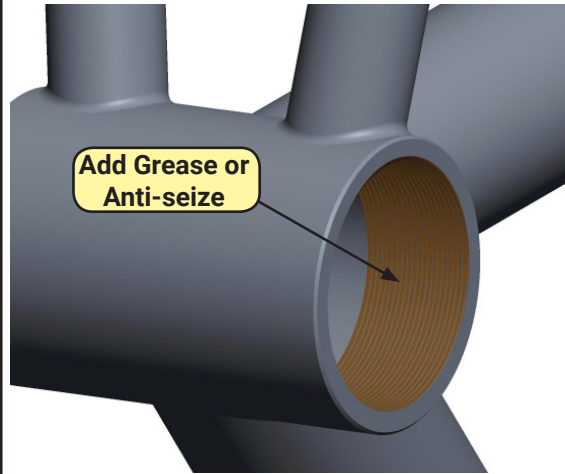


Dust Cover Setup Chart

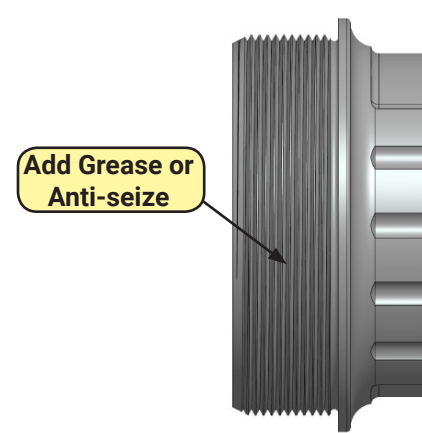
CRANK TYPE	LEFT/NON-DRIVE	RIGHT/DRIVE	RH CUP SPACER
Shimano Road 68mm	Shimano Dust Cover	Shimano Dust Cover	None
Shimano MTB 73mm	Shimano Dust Cover	Shimano Dust Cover	1.5mm Spacer

1. PREP

- 1** Add grease or anti-seize to the frame threads

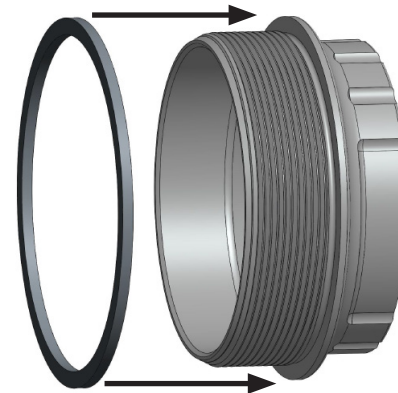


- 2** Add grease or anti-seize to the BB cup threads



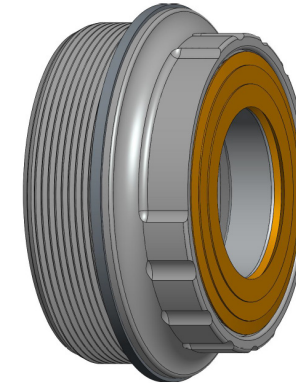
T47 73mm Mountain Only!

- 2b** Slide the 1.5mm Spacer onto the Drive Side (RH) Cup

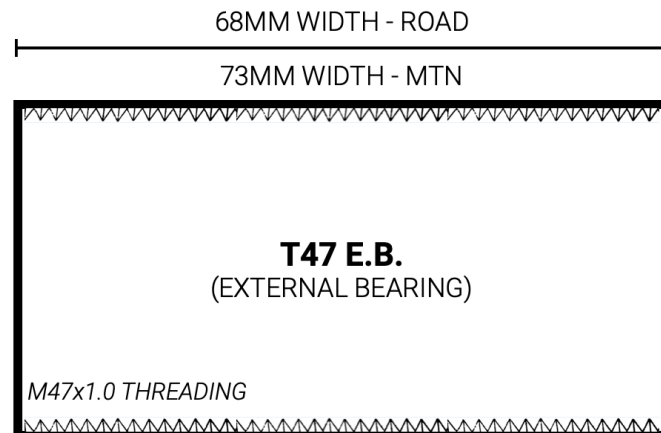


No cup spacer for 68mm Road!

- 3** Place orange dust covers over the bearings in the BB cups



REFERENCE - FRAME BB SPECS



2. INSTALL



- 1** For installation, **note the directional arrows on the cups**
- 2** Thread the Right-hand cup into the Right-hand (Drive) side of the frame
- 3** Thread the Left-hand cup into the Left-hand (Non-drive) side of the frame
- 4** Tighten each cup to **40Nm of torque**

Now install your Shimano crankset using Shimano's crankset instructions