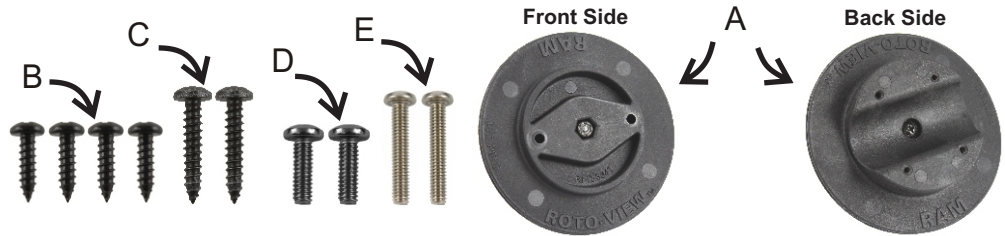


# RAM® Roto-View™ Assembly Instructions

For a video demonstration of this installation, visit [www.rrammount.com/part/RAM-HOL-ROTO1U](http://www.rrammount.com/part/RAM-HOL-ROTO1U)

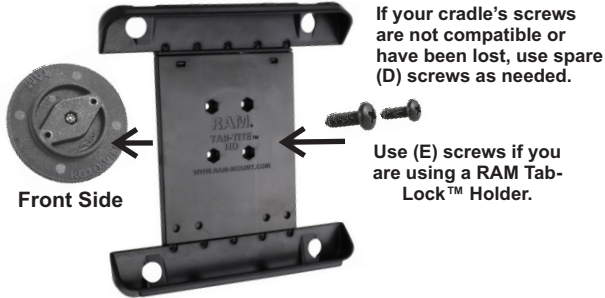
## PARTS INDEX:

- A. RAM Roto-View™ Sub Assembly (QTY. 1)
- B. #6 X 1/2" Sheet Metal Screw (QTY. 4)
- C. #6 X 3/4" Sheet Metal Screw (QTY. 2)
- D. #8-32 X 1/2" Machine Screw (QTY. 2)
- E. #8-32 X 1" Machine Screw for Tab-Lock™ (QTY. 2)



### Attaching Roto-View™ to RAM® Cradle

Use the screws that came with your RAM® cradle to attach to the **Front Side** of Roto-View™. Screw heads will pass through front side of your cradle. If your cradle has a 4-hole pattern, the 2-hole pattern of the Roto-View™ will line up diagonally.



RAM Mounting Systems  
8410 Dallas Ave S  
Seattle, WA 98108  
Phone: (206) 763-8361  
Fax: (206) 763-9615  
[www.rrammount.com](http://www.rrammount.com)  
[support@rrammount.com](mailto:support@rrammount.com)

If attaching to large RAM X-Grip® (RAM-HOL-UN9U or RAM-HOL-UN11U), see reverse side for instructions.

### Tension Adjustment

Adjust tension of Roto-View™ by loosening/tightening the center screw located on the **Back Side**. RAM Mount must be removed when adjusting tension.



### Attaching Roto-View™ to RAM Mount

Use provided sheet metal screws to attach your RAM Mount to Back Side of Roto-View™.

Use (B) screws for attaching metal or round plates



Use (C) screws for attaching composite diamond plate



**RAM**  
MOUNTS  
RMR-INS-ROTO1

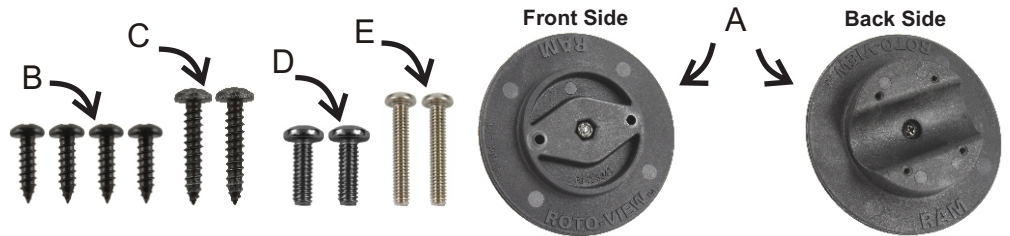
This document, including images, may not be reproduced partly or fully without the expressed written consent of National Products, Inc.

# RAM® Roto-View™ Assembly Instructions

For a video demonstration of this installation, visit [www.rrammount.com/part/RAM-HOL-ROTO1U](http://www.rrammount.com/part/RAM-HOL-ROTO1U)

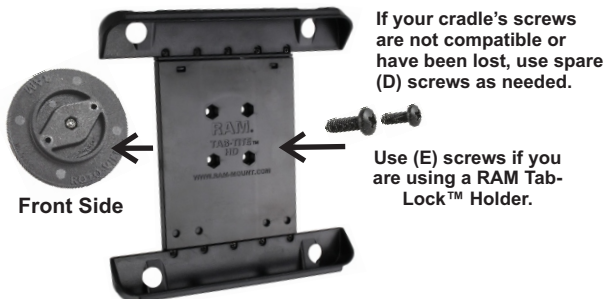
## PARTS INDEX:

- A. RAM Roto-View™ Sub Assembly (QTY. 1)
- B. #6 X 1/2" Sheet Metal Screw (QTY. 4)
- C. #6 X 3/4" Sheet Metal Screw (QTY. 2)
- D. #8-32 X 1/2" Machine Screw (QTY. 2)
- E. #8-32 X 1" Machine Screw for Tab-Lock™ (QTY. 2)



### Attaching Roto-View™ to RAM® Cradle

Use the screws that came with your RAM® cradle to attach to the **Front Side** of Roto-View™. Screw heads will pass through front side of your cradle. If your cradle has a 4-hole pattern, the 2-hole pattern of the Roto-View™ will line up diagonally.



RAM Mounting Systems  
8410 Dallas Ave S  
Seattle, WA 98108  
Phone: (206) 763-8361  
Fax: (206) 763-9615  
[www.rrammount.com](http://www.rrammount.com)  
[support@rrammount.com](mailto:support@rrammount.com)

If attaching to large RAM X-Grip® (RAM-HOL-UN9U or RAM-HOL-UN11U), see reverse side for instructions.

### Tension Adjustment

Adjust tension of Roto-View™ by loosening/tightening the center screw located on the **Back Side**. RAM Mount must be removed when adjusting tension.



### Attaching Roto-View™ to RAM Mount

Use provided sheet metal screws to attach your RAM Mount to Back Side of Roto-View™.

Use (B) screws for attaching metal or round plates



Use (C) screws for attaching composite diamond plate



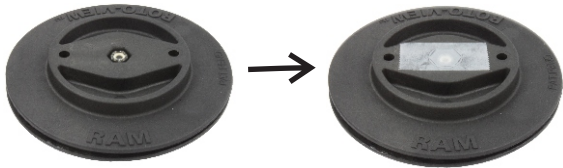
**RAM**  
MOUNTS  
RMR-INS-ROTO1

This document, including images, may not be reproduced partly or fully without the expressed written consent of National Products, Inc.

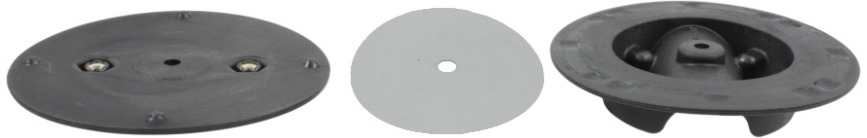
## (Reverse Side) Attaching Roto-View™ to Large RAM X-Grip®

These steps are only to be taken when assembling the RAM® Roto-View™ to the large RAM X-Grip® (RAM-HOL-UN9U and RAM-HOL-UN11U). These steps do not apply to any other RAM® cradle or holder.

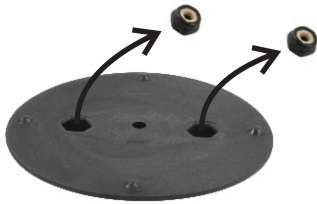
1. Apply a small piece of tape to the center nut on the front side of Roto-View™ assembly.



2. Turn Roto-View™ upside down. Remove center screw to open up both halves of the assembly. **Caution: Inside assembly contains grease. Only touch outside edges of Roto-View™ assembly.**



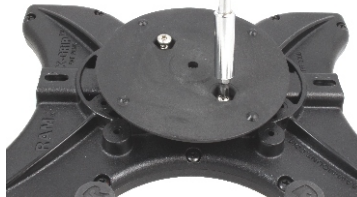
3. Remove both inside nuts from the nut pockets.



4. Align this half portion over the back holes of the X-Grip®.



5. Attach to holder using the sheet metal screws included with the X-Grip®.



6. Reassemble Roto-View™, positioning clear disc in the center, and re-tighten the center screw.



When completed, continue instructions on reverse side.

**RAM Mounting Systems**  
8410 Dallas Ave S  
Seattle, WA 98108  
Phone: (206) 763-8361  
Fax: (206) 763-9615  
www.rammount.com  
support@rammount.com

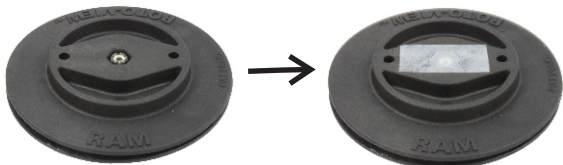


This document, including images, may not be reproduced partly or fully without the expressed written consent of National Products, Inc.

## (Reverse Side) Attaching Roto-View™ to Large RAM X-Grip®

These steps are only to be taken when assembling the RAM® Roto-View™ to the large RAM X-Grip® (RAM-HOL-UN9U and RAM-HOL-UN11U). These steps do not apply to any other RAM® cradle or holder.

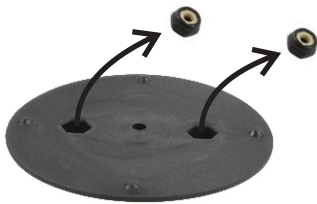
1. Apply a small piece of tape to the center nut on the front side of Roto-View™ assembly.



2. Turn Roto-View™ upside down. Remove center screw to open up both halves of the assembly. **Caution: Inside assembly contains grease. Only touch outside edges of Roto-View™ assembly.**



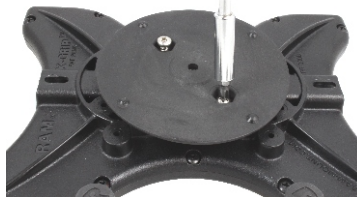
3. Remove both inside nuts from the nut pockets.



4. Align this half portion over the back holes of the X-Grip®.



5. Attach to holder using the sheet metal screws included with the X-Grip®.



6. Reassemble Roto-View™, positioning clear disc in the center, and re-tighten the center screw.



When completed, continue instructions on reverse side.

**RAM Mounting Systems**  
8410 Dallas Ave S  
Seattle, WA 98108  
Phone: (206) 763-8361  
Fax: (206) 763-9615  
www.rammount.com  
support@rammount.com



This document, including images, may not be reproduced partly or fully without the expressed written consent of National Products, Inc.