

SADDLEMEN®

W W W . S A D D L E M E N . C O M

USER GUIDE & INSTALLATION INSTRUCTIONS

DESCRIPTION: PC3200C Convertible Pet Carrier

PART NUMBER: 3515-0131

FITMENT: Universal

OVERVIEW:

- The best way to carry your small pet on your motorcycle in comfort, this carrier also doubles as an effective cargo bag.
- Multiple vents and access flaps let you vent fresh air to your pet while providing easy access to either pet or cargo.
- Spacious pet compartment (16" wide x 14" long x 14" tall) includes a removable and washable bottom tray and resting pad for your pet's comfort. Includes food and water trays that stow neatly in their own compartment.
- Two mounting systems are included - a Saddlemen Versa-Mount seat harness or adjustable sissy bar strap system that easily attaches the bag to your motorcycle's seat, luggage rack, or sissy bar.
- Quick disconnect mounting straps and sissy bar sleeve allow the bag to be removed from your motorcycle in seconds.
- Convenient liner bag with carry handles lets you store clothes or cargo away from your pet or other bag contents.
- Includes a plush back rest pad you can position for your - or your passenger's - riding comfort.
- Sturdy grip handle for convenient carrying + included backpack straps allow ease of carrying the bag off your bike.
- Sliding leash mount allows pets freedom of movement while keeping them secured in the bag. Included are both a short internal leash and a long walking leash for pet pit stops.

CONTENTS / PARTS INCLUDED:

Qty	Item	Qty	Item	Qty	Item	Qty	Item
1	Carrier bag	1	Mounting harness (R)	1	Mounting harness (L)	4	Pull-down straps
4	Security straps	1	Backpack strap	1	Backrest pad	1	Cargo liner bag
1	Short (retention) leash	1	Long (walking) leash	2	Food/water trays	1	Instruction sheet

IMPORTANT:

Please read these instructions completely before starting installation. All "NOTE," "CAUTION" and "WARNING" notations are serious safety issues and should be read carefully. Possible injury to riders or damage to the motorcycle and/or accessory may result if improperly installed.

NOTICE TO DEALERS:

These instructions contain important information for future reference and should be given to the customer.

⚠ WARNING:

READ THESE INSTRUCTIONS THOROUGHLY BEFORE INSTALLATION!

Because of the variety of motorcycle configurations, other accessories, and the features and intended use of this Saddlemen accessory, there could be many different mounting options. You are responsible for the proper installation of this accessory bag on your motorcycle. Your attention to these installation instructions and recommendations will permit safe and proper use of this accessory. You must mount this accessory properly and securely before riding your motorcycle. If you lack the ability to safely and properly install this accessory, seek out a qualified motorcycle technician for assistance. During installation, support the motorcycle with a suitable stand or lift so it will not tip over and injure you, or damage the vehicle.

You must secure or stow this accessory properly before riding your vehicle. If you lack the ability to safely and properly install this accessory, seek out a qualified motorcycle technician for assistance. Using or mounting this accessory improperly could result in a loss of control of the motorcycle which could result in damage to your motorcycle or other personal property, the property of third parties, and/or personal injury to yourself or others, up to and including death.

11-400244 Pet Carrier (Rev.5 12-21)

⚠ WARNING:

BE SURE TO THOROUGHLY READ AND CLOSELY FOLLOW THE MOUNTING INSTRUCTIONS THAT ARE INCLUDED WITH THIS ACCESSORY

- The bag must be installed and securely fastened onto the seat or the rack of the motorcycle. For your and your pet's safety, install the bag securely so it will not shift or move while riding. Make sure the mounting hardware will not contact the wheels, suspension or any other moving parts of your vehicle.
- If you do not understand these instructions DO NOT mount the bag. Remove the mounting straps or any related components you may have already installed on your motorcycle.
- Thoroughly inspect your bag before every ride. Do not use this bag if the mounting system has been modified, or has deteriorated, loosened or is beginning to fail.
- Before riding, take steps to secure and protect any cargo inside the bag. Do this even if you are not transporting your pet.
- Continually check the security of the bag at each stop as you ride. Hardware on a motorcycle can loosen during operation, so be sure to check it frequently - the health of your pet depends on your attention to safety.
- Do not use this accessory if you have any doubts as to whether it is properly mounted to your motorcycle.
- When using this accessory, do not exceed your vehicle's Maximum Gross Vehicle Weight as listed on your motorcycle or in the manufacturer's owner's manual.
- Do not exceed 20 pounds of total weight, including the weight of your pet and the bag itself, along with any other cargo.
- If mounted to a luggage rack, do not exceed the weight rating of the rack, including the weight of the bag itself, along with its contents.
- This accessory is designed to carry cargo or a small animal (pet), DO NOT use it to transport a child or a larger animal.
- Do not transport or store flammable or potentially explosive materials in your bag.
- When removing the bag, disconnect and remove any mounting straps. Do not operate the motorcycle if the mounting straps are still in place after removing the bag, as the straps could interfere with the safe operation of the vehicle.
- If your bag is ever damaged, do not use it until it has been inspected by your local professional motorcycle dealer. Replace the bag immediately if it has damage that will prevent it from being properly secured to your vehicle or if it is unable to safely and securely hold your pet or other contents.

YOU ARE RESPONSIBLE FOR THE HEALTH AND SAFETY OF YOUR PET

- Verify that transportation of your pet within the carrier bag is legal in the jurisdictions that you intend to ride in.
- Never leave your pet unattended in the carrier bag.
- Make sure your pet can get sufficient breathable air at all times. If your pet is inside the carrier bag, the air vent flaps MUST be open. Failing to open the vent flaps or covering the bag with a rain cover or another material could suffocate your pet.
- Make sure your pet does not experience extreme heat or cold within the carrier bag.
- You must take extra precautions so your pet will not leap or escape from the carrier bag as they can be strangled or fatally injured.
- If your pet will not calmly rest within the carrier, especially if the motorcycle's engine is running or the vehicle is in motion DO NOT transport your animal in the carrier.
- Before transporting your pet in the bag, make sure your animal is comfortable being placed within the carrier and being secured to the collar/harness retention system.
- When using the supplied leashes to tether your pet to the bag's internal D-rings, make sure your animal's collar or harness is secure on their body and will not move in a way that could injure them.
- Your pet must fit completely within the carrier bag. No part of their body can protrude from the carrier bag so you must make sure all solid or mesh openings are securely closed after loading and before riding.
- If you do not understand the accessory's instructions or this warning label DO NOT use this accessory. Contact your local professional motorcycle dealer for assistance, or call the Saddlemen support line at (310) 638-1222.

DO NOT ATTEMPT TO USE THIS BAG IF:

- You do not understand these installation and use instructions,
- You do not understand any part of the accessory mounting system,
- You have any doubts as to the security of the mounting system.

Remember: Motorcycling can be a dangerous activity. Installation of any accessory can increase your risk if it is not installed properly. You are responsible to install this accessory so it will not contact any portion of the drive train, suspension or steering, or if it will in any way interfere with the operation of your motorcycle.

INSTALLATION:

Your Saddlemen Convertible Pet Carrier & Cargo Bag has been designed to be mounted on a variety of motorcycles using the included mounting system options: a sissy bar mounting strap system, or a seat harness to attach the bag to a sissy bar, rear rack, or seat. You (or your professional motorcycle technician) will need to determine the best mounting configuration for your motorcycle or scooter.

SISSY BAR MOUNTING STRAP & SECURITY STRAPS

Your bag has an adjustable rod mounting strap system which creates a sleeve (1) that will allow you to slip the bag over your motorcycle's sissy bar. In most applications, the bag is commonly mounted behind the sissy bar where it can rest on a rear rack.

IMPORTANT Attaching the supplied security straps (2) to solid mounting points is essential in order for the bag to stay attached to the motorcycle during rough riding conditions.



11-400244 Pet Carrier (Rev.5 12-21)

INSTRUCTIONS *(continued)*

The default size of the inner mounting strap matches the width of most Harley-Davidson® sissy bars equipped with a back rest pad. For these types of sissy bars, lift the retention flaps (3), pull out the two plastic mounting rods (4), remove the outer mounting strap cover (5), and expose and use just the inner mounting strap (6).

Adjusting the mounting strap to fit other sissy bar widths is covered below.

For your, or your passenger's riding comfort, a back rest pad is supplied with your bag that can attach to the hook & loop fastener strip on the mounting strap. To attach the pad (7), press it into place on the strap.

The bag can also be mounted over the front of the sissy bar to rest on the passenger seat. Some riders elect this configuration so they can use the bag as a back rest.

NOTE: When mounting the bag in front of a sissybar, consider using the seat harness mounting method (explained later in this instruction sheet) with the bag mounted backwards on the passenger seat so the rider can use the supplied back rest pad.

IMPORTANT: Regardless of how you orient the bag, attaching the supplied security straps (9) to solid mounting points on the chassis is essential for the bag to stay securely attached to the motorcycle during rough riding conditions. After installing the bag, cut off or secure any excess security strap material so it will not interfere with the motorcycle's controls, suspension, wheels or other components. Do not mount the bag behind the sissy bar unless the motorcycle has a rear rack, as the bag could damage the rear fender and/or interfere with the motorcycle's lights, suspension, wheels or other components.

SISSY BAR MOUNTING STRAP ADJUSTMENT

Your bag has an adjustable rod mounting strap system which creates a sleeve that allows you to slip the bag over your motorcycle's sissy bar. The bag has upper (1) and lower loops (2) to hold the rods (3) so you can adjust how the mounting strap (4) will fit onto your motorcycle's sissy bar and pad.

IMPORTANT Make sure the rods (3) are inserted into both the upper (1) and lower (2) loops on the bag when you are adjusting the size of the mounting strap. After putting a rod into both the upper and lower loops and the mounting strap loop, make sure the rod flap (5) is pressed down, to full engage the hook & loop fasteners. The security straps attach to the upper or lower D-rings (6) located on each corner of the bag.



11-400244 Pet Carrier (Rev.5 12-21)

INSTRUCTIONS *(continued)*

VERY WIDE SISSY BAR MOUNTING SUGGESTION

To set the mounting strap for the widest sissybar, lift the retention flaps, pull out the two plastic mounting rods, and remove the outer mounting strap cover to expose and use just the inner mounting strap.

WIDE SISSY BAR MOUNTING SUGGESTION

Set the rods through the outer loops and on the back of the pack and the mounting strap to create a sleeve that snugly fits around a wide sissy bar and pad.

NARROW SISSY BAR MOUNTING SUGGESTION

Set the rods through the inner loops and on the back of the bag and the mounting strap to create a sleeve that snugly fits around a narrow sissy bar and pad.

TAPERED SISSY BAR MOUNTING SUGGESTION

To set the shape of the mounting strap sleeve to fit a tapered or an angled sissy bar, set the rods through the inner loops and the outer loops on the back of the bag and the mounting strap to create a triangular sleeve that matches your sissy bar and pad.

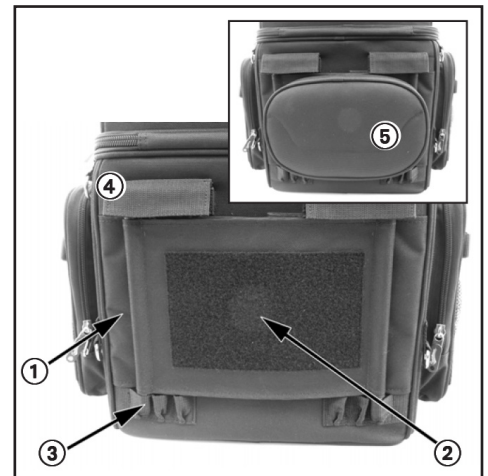


OUTER MOUNTING STRAP PROTECTIVE COVER

If you are not using the mounting strap to create a sleeve to attach your bag to a sissybar, cover and protect the inner mounting strap (1) with the outer protective strap (2). Route the adjustment rods through the outer protective cover and into the outer adjustment loops (3) on the back of the bag.

IMPORTANT Make sure the rods are properly inserted into both the upper and lower loops (3) on the bag when you installing the outer mounting strap protective cover. After installing the rods and strap, make sure the rod flap (4) is pressed down, securing its hook & loop fasteners.

NOTE Make sure to have the hook & loop fastener side of the protective cover facing outwards if you plan to use the supplied back rest pad (5).



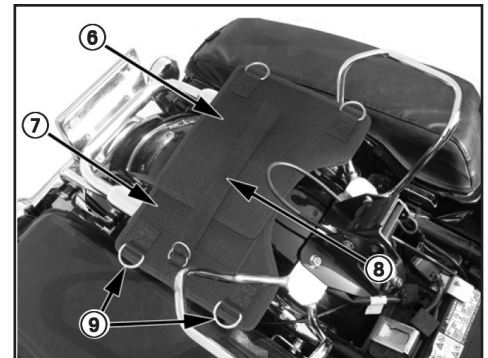
SEAT MOUNTING HARNESS & SECURITY STRAPS

The Saddlemen Convertible Pet Carrier & Cargo Bag is supplied with an under seat mounting harness and strap system that enables you to securely mount your bag to your motorcycle. This system will hold your bag in place better than using straps or elastic cords alone.

Remove the seat from your motorcycle. Adjust and set the left side (6) of the mounting harness with the right side (7) of the harness on the top of the rear fender.

NOTE: The "UP" side of the harness halves are connected with a D-ring and adjustment strap (8). Keep this side up, towards the seat, to prevent damaging the finish on the fender. Adjust the width of the connected harness halves using the adjusting strap (8) and the hook and loop fasteners on each mounting harness. Set the width of the harness so the four D-rings (9) will protrude just past the edge of the seat (after it is reinstalled).

Reinstall the seat.



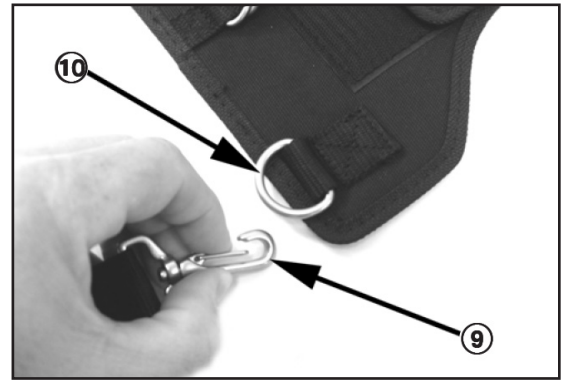
11-400244 Pet Carrier (Rev.5 12-21)

INSTRUCTIONS *(continued)*

Connect the snap-hook ends (9) of the security straps to the D-rings (10). The other end of the four security straps are also equipped with metal snap-hooks that will connect to D-rings on the bag.

NOTE:

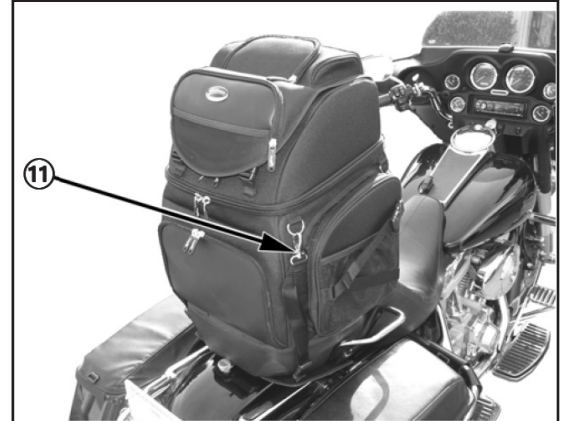
To protect your vehicle's surface, position the security straps so the snaphooks with the protective backing connect to the mounting pad's D-ring.



Set the bag onto the seat and connect the snap-hook (11) of the security straps to the D-rings on each corner of the bag. Cinch the straps to tighten the bag to the seat. Secure any loose or extra strap material.

NOTE Connecting the straps to the four upper D-rings on the bag will aid in the stability of the bag on the seat.

IMPORTANT Do not overtighten the mounting straps. Over cinching the straps can damage the D-ring mounts and damage the fabric walls of your bag. Damage of this type is not a defect and repair or replacement will not be covered by the Saddlemen Limited Warranty.



NOTE If you plan to use the bag as a back rest, install the bag "backwards" on the seat so you can attach the back rest pad (12).

IMPORTANT Make sure the bag does not block or touch the vehicle's tail light, turn signals, fender, suspension, wheels, or other components. Do not mount the bag near hot surfaces, such as the motorcycle's exhaust. Cut off or secure any excess security strap material so it will not interfere with the motorcycle's controls, suspension, wheels or other components.



When removing the bag, disconnect the bottom snap-hooks so that the straps are removed with the bag. Do not operate the motorcycle if the straps are still in place after removing the bag, as the straps could interfere with the safe operation of the vehicle.

BAG FEATURES

Your Saddlemen Convertible Pet Carrier & Cargo Bag has several features that enable you to carry your pet and cargo in a safe and organized manner.

- (1) Food & water tray storage (mesh underneath)
- (2) Main compartment zipper opening (mesh separator underneath)
- (3) Leash storage pocket
- (4) Top access flap (mesh opening underneath)
- (5) Upper side mesh flap (mesh underneath)
- (6) D-ring for bag mounting (eight on bag)
- (7) Lower side access flap (mesh opening underneath)

Not shown:

- Padded paw pad in main compartment floor
- Removable & washable vinyl tray in main compartment floor
- Inner leash retention system
- Short internal & long walking leashes
- Cargo liner bag



11-400244 Pet Carrier (Rev.5 12-21)

INSTRUCTIONS *(continued)*

CARING FOR YOUR PET WITH THE CARRIER

The Saddlemen Convertible Pet Carrier & Cargo Bag includes many features that will help you hold and transport your pet.

IMPORTANT Each animal is different and your pet may or may not be well suited to being transported in the carrier. The temperament of your pet is an important factor as some animals will not tolerate being inside a carrier. Some animals may have claws, beaks or teeth that can damage the carrier so be sure to take that into consideration. You must research your pet's needs and make the decision whether to use this carrier with your pet.

Ventilation flaps & mesh: The carrier has several flaps that unzip and roll open to expose the ventilation mesh sections. Once open, secure the rolled up flap (3) with the strap (4) and buckle attached to the carrier. The upper flap also allows access to your pet by unzipping (1) the center section of the ventilation mesh (2).

IMPORTANT NOTE: Your pet requires breathable air at all times when in the carrier. Open as many ventilation flaps as possible when your pet is in the carrier.

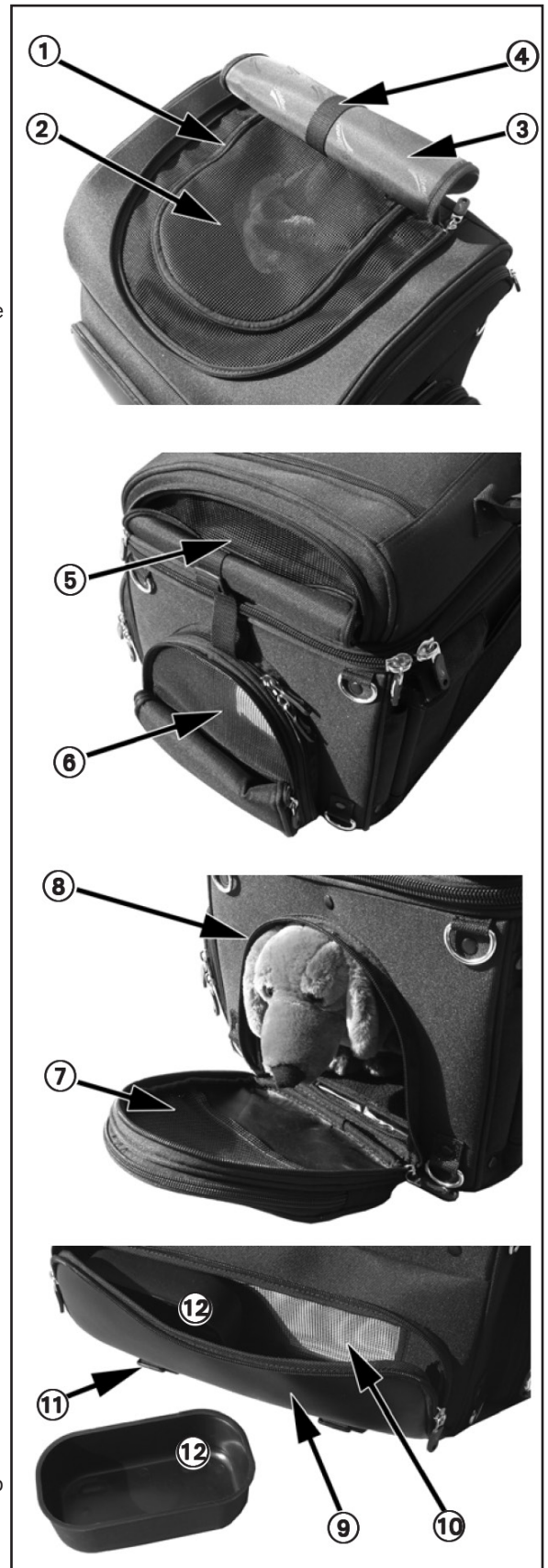
On each side of the carrier are upper (5) and lower (6) ventilation sections. Once open, secure the rolled up flaps with the straps and buckles attached to the carrier.

The flap (7) on the lower, right side of the carrier is also a access door. Unzip the inner zipper (8) to access your pet from the side.

There is a large ventilation flap (9) and mesh (10) at the front of the carrier. Use the two straps and buckles (11) located on the bottom edge of the carrier to secure this flap when it is opened and rolled up.

Food trays: The front ventilation flap also doubles as a storage pouch for the included food and water trays (12).

NOTE:
Clean and stow the trays in another location if you need to open the front ventilation flap to maximize breathable air flow to your pet.



11-400244 Pet Carrier (Rev.5 12-21)

INSTRUCTIONS *(continued)*

Pet compartment: To access the main compartment for placing your pet inside of the carrier, unzip the large zipper (1) that goes around the bag's circumference.

The lid of the carrier bag has a mesh ceiling (2) which can have the center section unzipped to provide your pet more headroom. If you unzip this section, roll the mesh back and secure the rolled up flap (3) with the strap and buckle attached to the carrier lid.

NOTE You can also stow the included cargo liner bag in the lid's mesh compartment. If you place the liner bag in the mesh compartment, be sure to open as many other ventilation vents on the carrier bag so your pet will get a good supply of breathable air.

Pet retention leash: There is a pet retention system built into the inner wall of the carrier bag. This system will help you keep your pet secure and comfortable within the bag by preventing unnecessary movement or the possibility of the pet jumping out of the carrier when it is open. The retention system uses a horizontal strap (4) with a sliding D-ring (5) to allow the pet some lateral movement and freedom to stand or lie down.

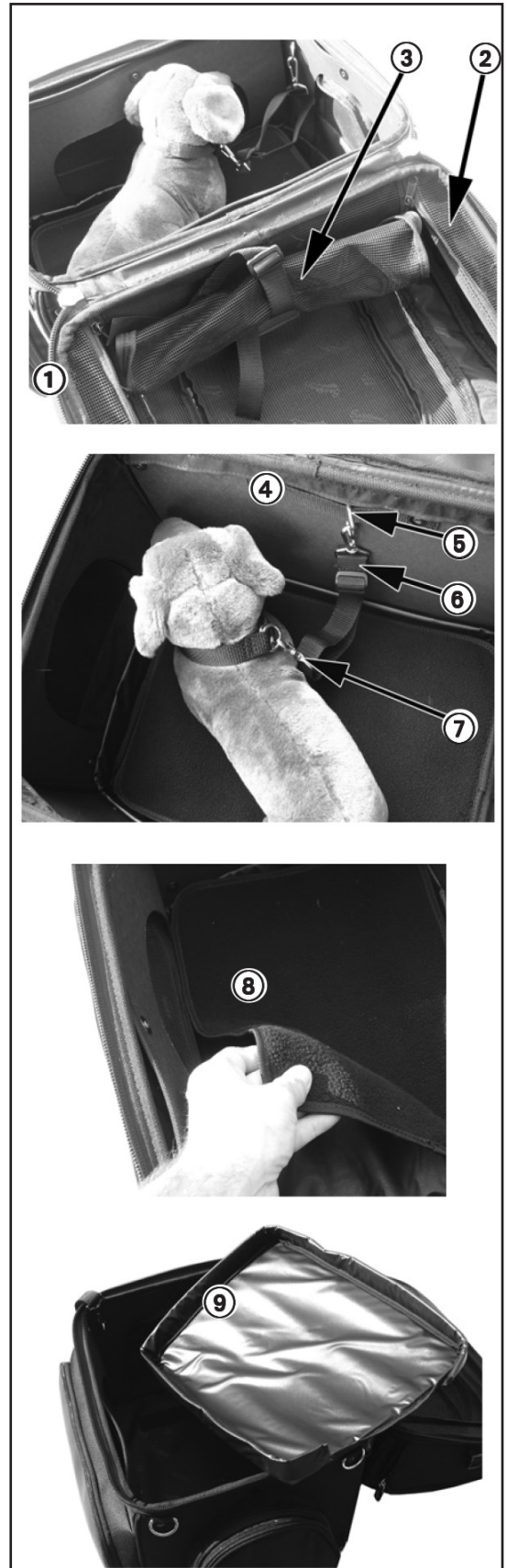
Use the included, short retention leash (6) to connect your pet to the retention strap. Connect one end of the retention leash to your pet's collar (7) and the other end to the D-ring (5) on the retention strap.

IMPORTANT NOTE:

The short leash is adjustable. Set the length so your pet has some freedom of movement within the carrier bag, but the leash remain short enough to keep the animal from jumping high enough to get out of the carrier bag if it is open. Make sure your pet's collar is sized properly and will not injure the animal.

Paw pad: There is a washable, synthetic carpet (8) on the bottom of the pet carrier. This paw pad is required to provide your pet comfort and a surface to which they can secure their position with their feet. The paw pad rests on top of the bag's bottom tray (see below).

Carrier bag bottom tray: A washable, vinyl covered tray (9) is sized to fit snugly to the bottom of the carrier bag. This tray will help you keep the inside of the carrier bag tidy by capturing debris, moisture and "accidents" that could soil the bag. After cleaning, dry the tray before you reinstall it in the bag and place the paw pad on top of it.



INSTRUCTIONS *(continued)*

TAKING YOUR CARRIER BAG WITH YOU AFTER YOU STOP

Your Saddlemen Convertible Pet Carrier & Cargo Bag is equipped with a rugged carrying handle and includes a strap for carrying the bag over your shoulder or as a backpack.

- (1) Upper backpack strap D-ring
- (2) Carry handle
- (3) Upper and lower bag D-rings

To use the backpack strap, connect the metal hasp in the center of the strap (4) to the upper backpack strap D-ring.

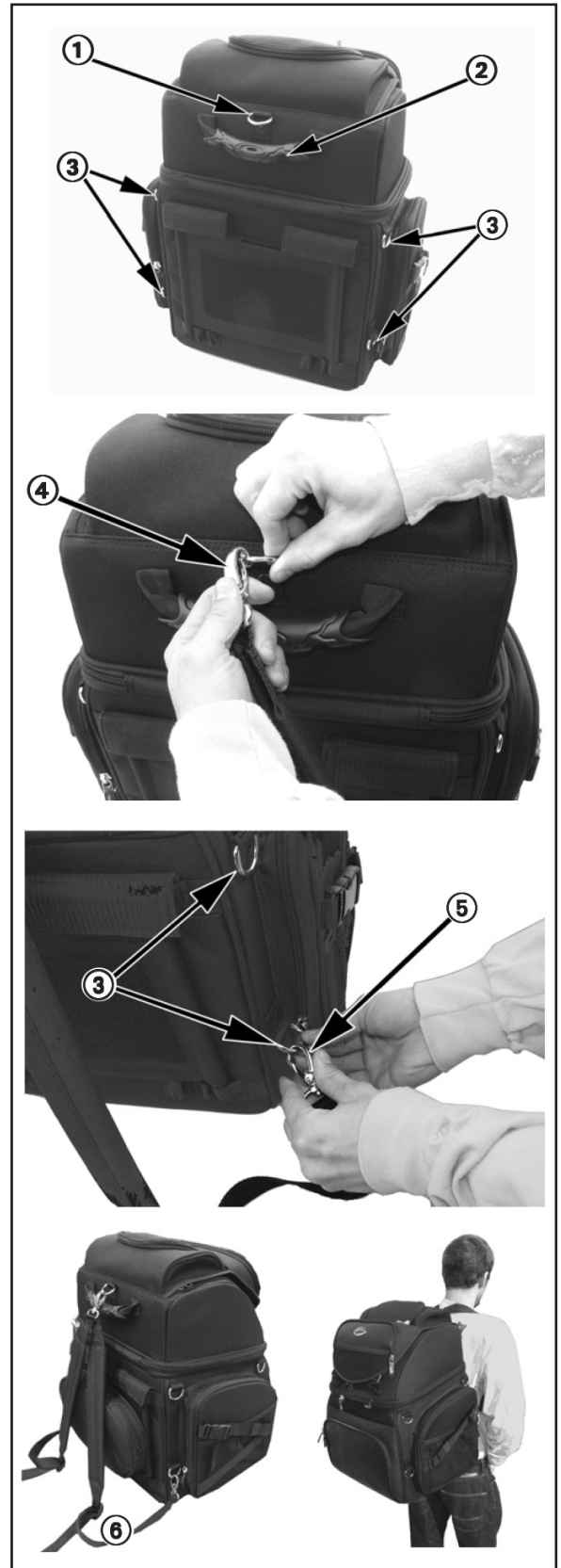
Complete connecting the backpack strap using the metal clips at the ends of the strap (5) to the upper or lower bag D-rings (3).

NOTE:

Use the adjustment buckles on the backpack strap (6) to set the length of the strap to the length that will be the most comfortable when you carry your bag. You can create other carrying configurations by connecting the backpack strap to any of the bag's D-rings.

IMPORTANT NOTE:

Whenever your pet is inside the carrier make sure the ventilation flaps are open. Be aware of the temperatures that will occur inside the carrier and how that will affect your pet's well being.



NOTE:

CARE OF YOUR SADDLEMEN PET CARRIER Your Convertible Pet Carrier & Cargo Bag requires almost no maintenance, other than periodic cleaning.

CAUTION:

Failure to install this Convertible Pet Carrier & Cargo Bag properly may allow portions of the carrier bag or its mounting materials to contact the vehicle's moving parts. It is vital that you verify that the carrier bag and/or any of its parts will not touch, or interfere with other components while the vehicle suspension moves through its entire stroke.

Make sure that your bag does not touch the exhaust or other non-moving components, as well, as they may be damaged from contact with the carrier bag.

Occasionally, the configuration of this accessory with certain motorcycles may require relocation and/or adjustment of certain components on the vehicle. Check to be sure that all lights and safety reflectors are visible once the carrier bag is in place. If the bag blocks any side reflectors, place reflectors on the exterior sides of the bag (reflectors with self-adhesive backing are available from motorcycle or automobile supply stores). It is your responsibility to make sure the installation does not create an unsafe or illegal situation.

After 50 miles (80 kilometers), recheck all of the mounting straps and the bag to make sure they are still tight and secure. Inspect the bag and related hardware before and during each ride. A loose bag or hardware can interfere with the vehicle's operation and cause an unsafe riding condition.

Whenever your pet is inside the carrier bag make sure the ventilation flaps are open. Be aware of the temperatures that will occur within the carrier and how that will affect your pet's well being. Like you, your pet will need food and water frequently as you travel. If you have any questions about transporting your pet, consult a veterinarian.

LIMITED WARRANTY POLICY

SADDLEMEN LIMITED ONE-YEAR WARRANTY Saddlemen warrants its products for defects in materials, design or workmanship for a period of one year after retail purchase. Items that are defective will be repaired or replaced by Saddlemen at its sole discretion. Damage caused by improper use or improper installation is not a defect; therefore repair, replacement or shipping of a damaged accessory will not be covered under this warranty. This limited warranty contains other provisions and conditions, so please refer to the Warranty Policy that was provided with your Saddlemen luggage or visit www.saddlemen.com for additional information. You can count on Saddlemen's quality, innovation, service and style. If for any reason you are not satisfied with the performance of your Saddlemen luggage, please contact the Saddlemen support line at (310) 638-1222.

11-400244 Pet Carrier (Rev.5 12-21)



17801 SOUTH SUSANA ROAD, RANCHO DOMINGUEZ, CA 90221

PH: 310.638.1222