

Installation & Operations Manual Honda Pioneer X10D

Installation Information:

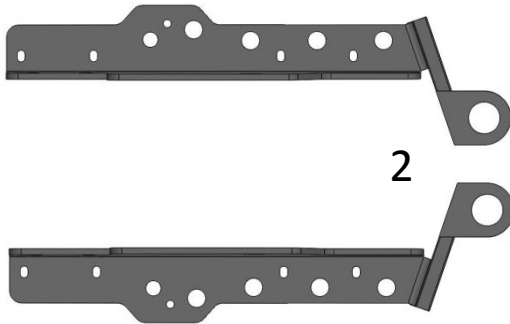
This product does not require any modifications to your vehicle. Please familiarize yourself with all the steps before beginning assembly.

Seizmik makes Windshields, Mirrors, Door Kits, Light Bars, Hood Racks, and other great accessories for UTV's to maximize the vehicles usefulness and to help you do what you do better.

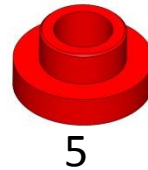
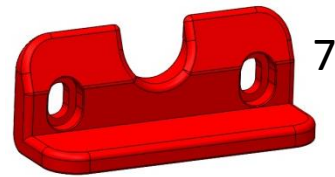
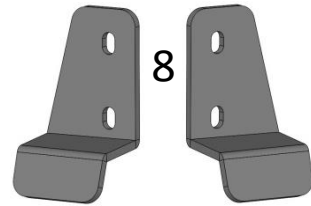
If you have any questions, comments, need assistance, or are missing parts, please visit our website <http://seizmik.com/customer-support> Or email us at service@seizmik.com. Visit www.seizmik.com for more information on our product or call 1-866-838-3366 between 9:00AM and 5:00PM EST.

Parts List:

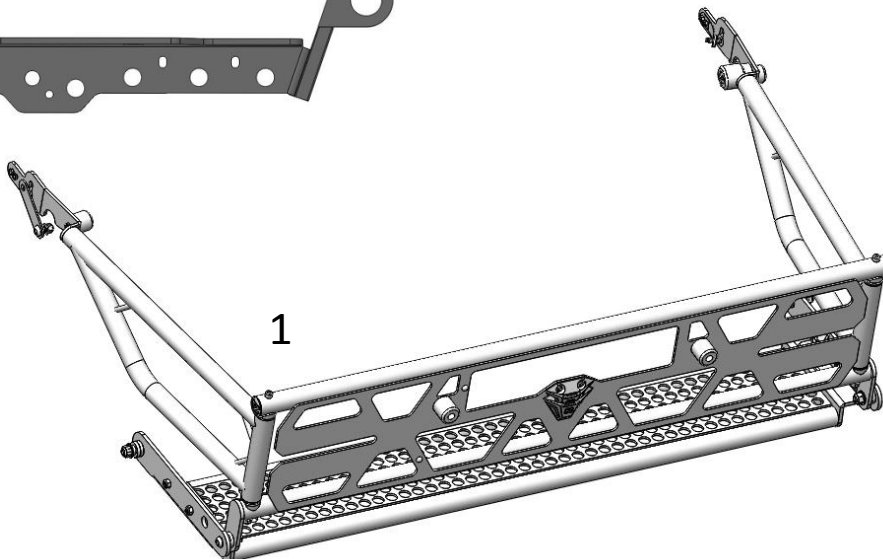
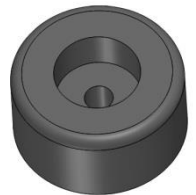
1. Bed extender assembly
2. Tailgate Brace (Left and Right)
3. Cable Extender (2)
4. Large Rubber Bumper (2)
5. Plastic Bushing (4)
6. Plastic Spacer (2)
7. Rub Blocks (6)
8. Brace Hook (Left and Right)
9. Hardware Bag



3



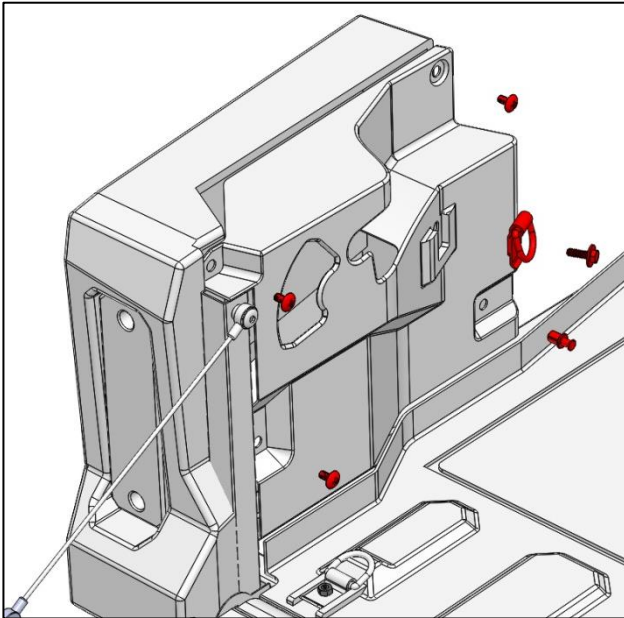
4



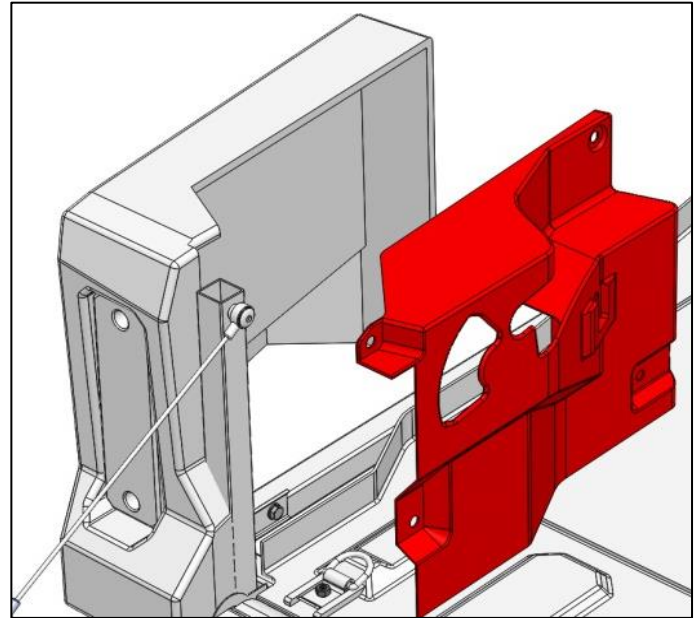
1. Tailgate removal



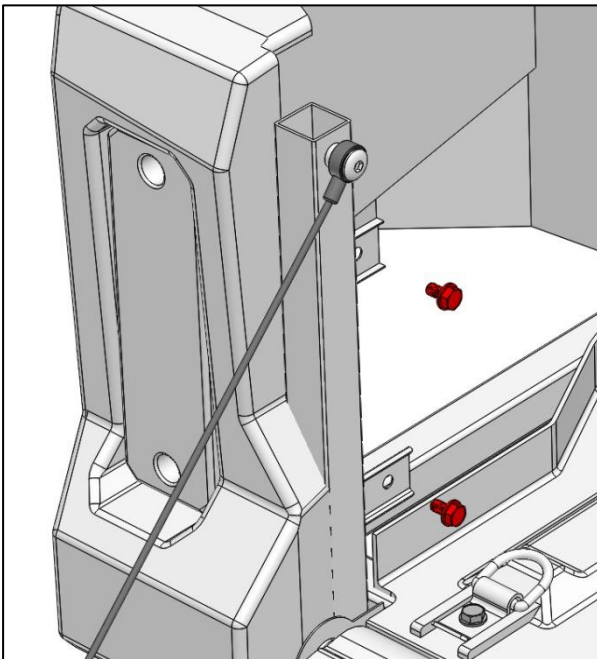
Note: The procedure shown is for the Pioneer 1000-5. The installation is similar for the 700-4



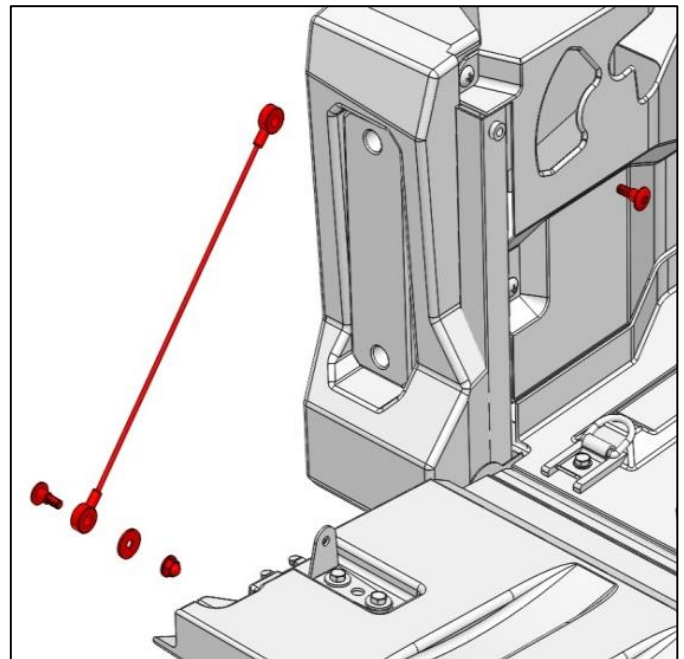
1. Steps 1-3 only need to be done on one side. It doesn't matter which. Begin tailgate removal by removing 3 phillips head screws, 1 plastic push pin fastener, and the 6mm bolt holding the cargo D ring from the rear inner trim panel.



2. Remove inner panel. You will need to open the rear door to remove it completely.

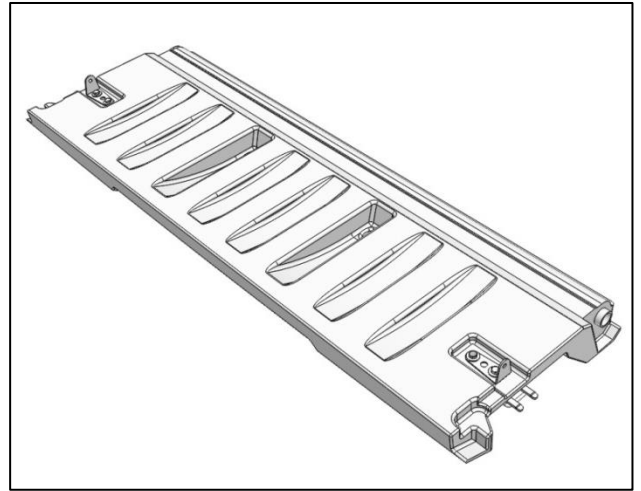
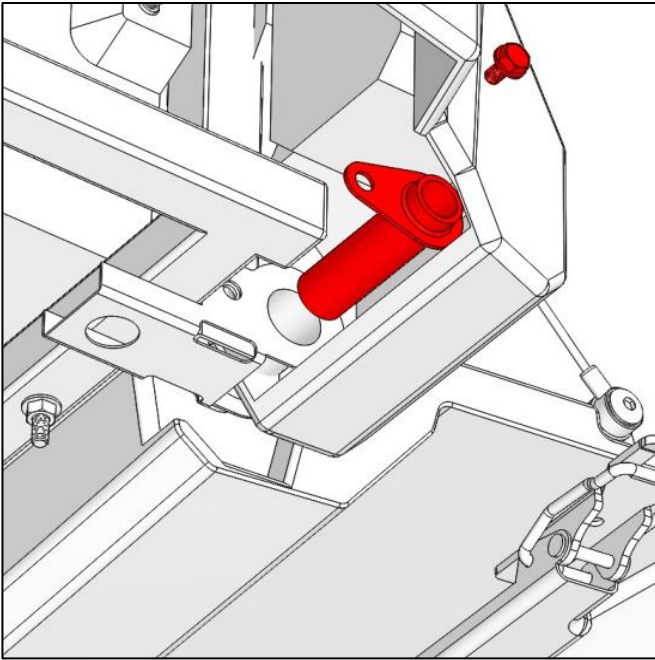


3. Remove the two 6mm bolts from the rear steel upright. Removal of these bolts will allow you to pull the rear body away from the vehicle enough to pull the tailgate pivot out after the next step.



4. Remove the cable stays from **BOTH SIDES**. When removing the allen head bolts from the top of the cables, make sure your wrench fits well as these will be very tight from the factory. Set all these parts aside as you will reuse some of them.

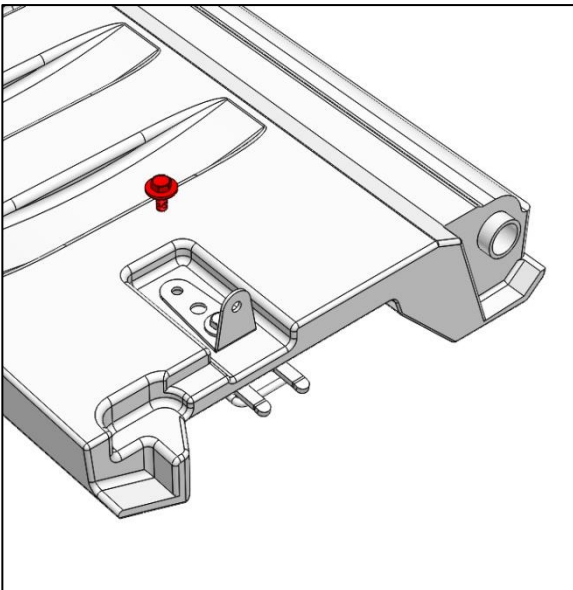
1. Tailgate removal



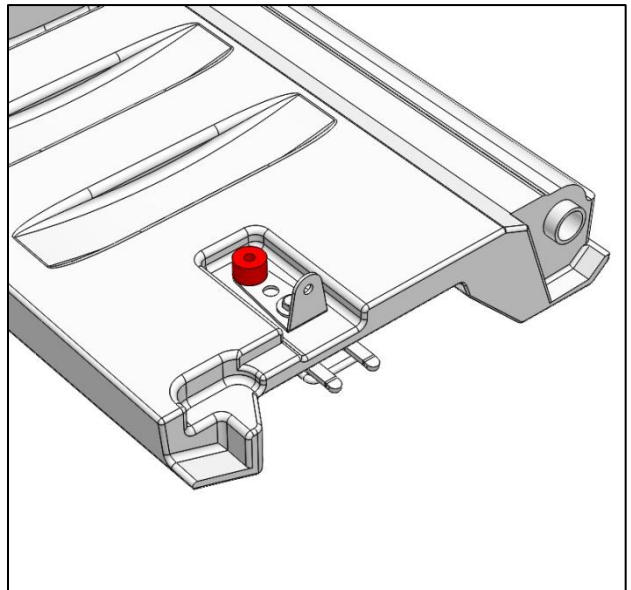
6. Remove the tailgate and set it on a work surface for the next steps.

5. This only needs to be done on whichever side you removed the rear body bolts from. Locate the tailgate pivot underneath the vehicle and remove the 6mm bolt holding it in place. By pulling the rear body slightly away from the vehicle you can pull the pivot out far enough to release the tailgate.

2. Tailgate Brace installation

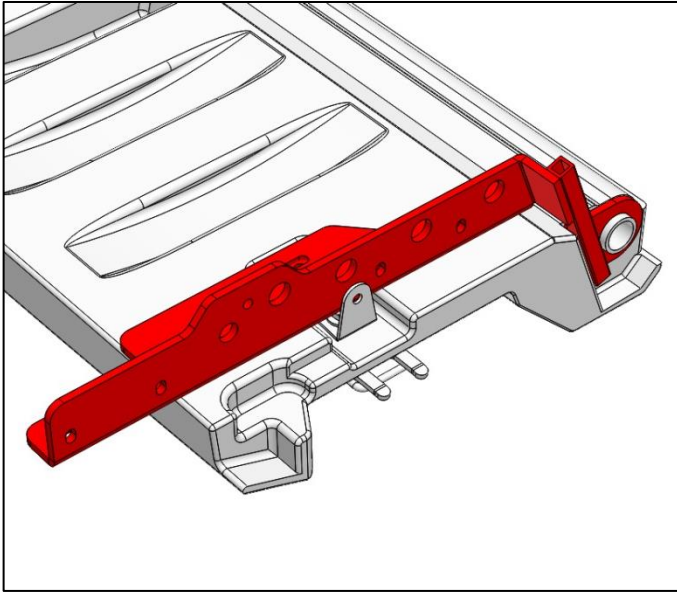


1. Perform all steps on both sides. Remove innermost of the two bolts holding on the bracket that used to hold the tailgate cables. There is a small aluminum spacer in the hole that will fall out if you turn the tailgate over. Make sure this stays in the hole

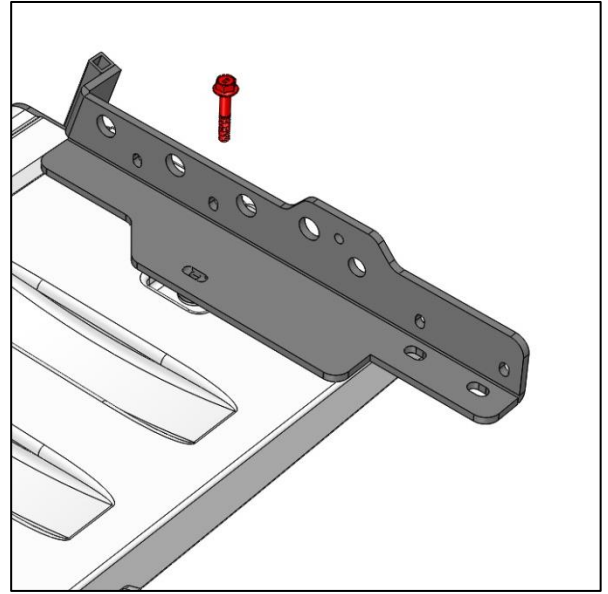


2. Place one of the plastic spacers over the hole that the bolt was in.

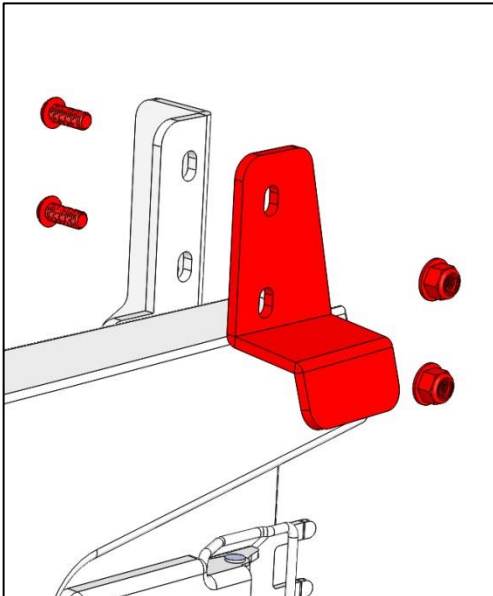
2. Tailgate Brace installation



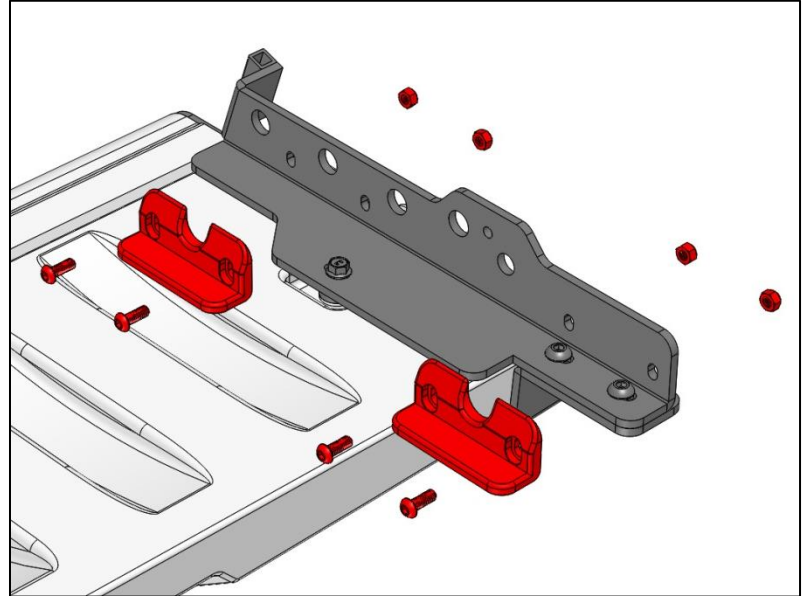
3. Install the tailgate brace (right side shown). It will be a tight fit over the tailgate pivot tube.



4. Install the provided M6x35 flange bolt through the tailgate brace and plastic spacer. **Do not tighten completely at this time.**



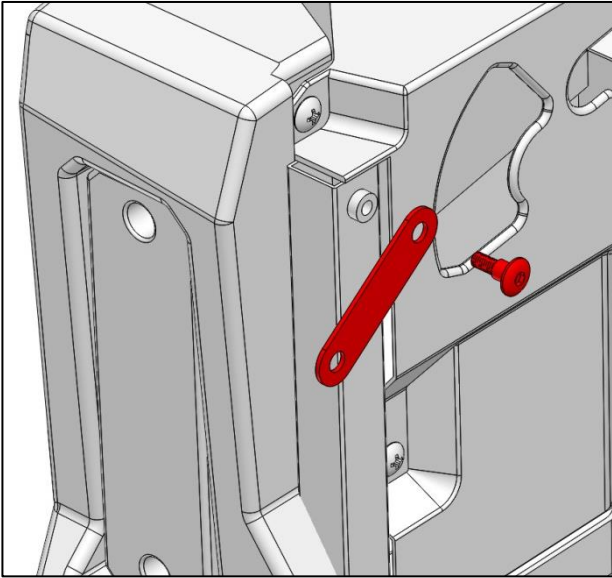
5. Install the rear brace hooks using the M8x20 Button head bolts and M8 nyloc flange nuts. **Make sure the bolts face the direction shown.**



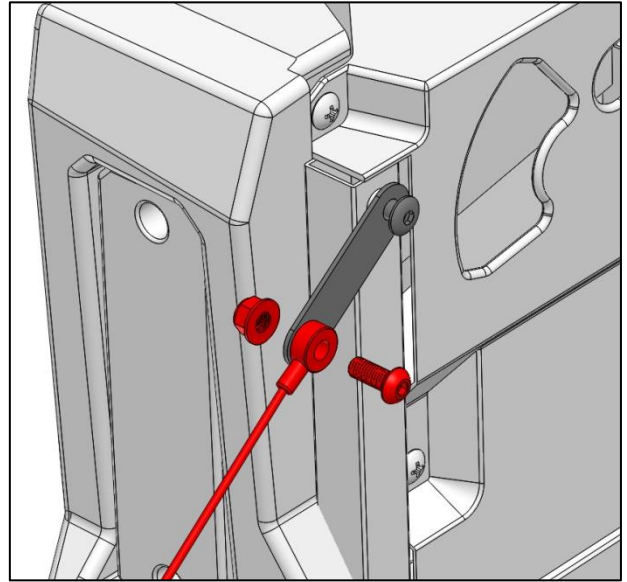
6. Install two plastic rub blocks using the M6x16 button head bolts and M6 nyloc nuts. **Make sure the bolts face the direction shown.**

You may re-assemble the rear inner trim panel and re-install the tailgate at this time. Do not re-install the cables.

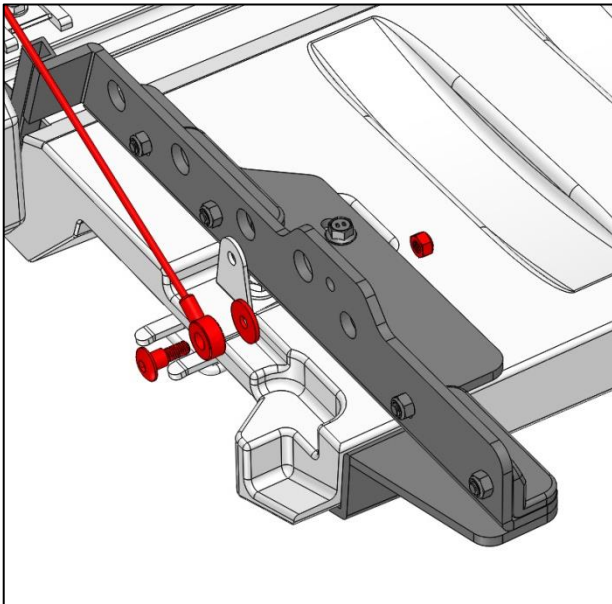
3. Cable and Bumper installation



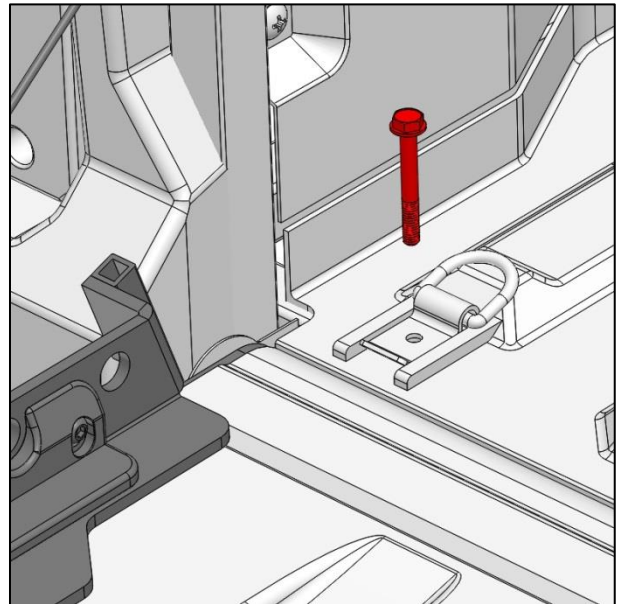
1. **Perform all steps on both sides.** Install the cable extender and fasten at the top using the original Honda bolt removed in step 4 of tailgate removal. Make sure this bolt is tight as most of the cargo weight will be supported here.



2. Install one end of the cable to the cable extender using a M8x20 button head bolt and M8 nyloc flange nut. **Make sure the parts are oriented as shown.** **IMPORTANT:** Tighten the nut just enough to remove most of the gap but allows the cable to still swivel freely.

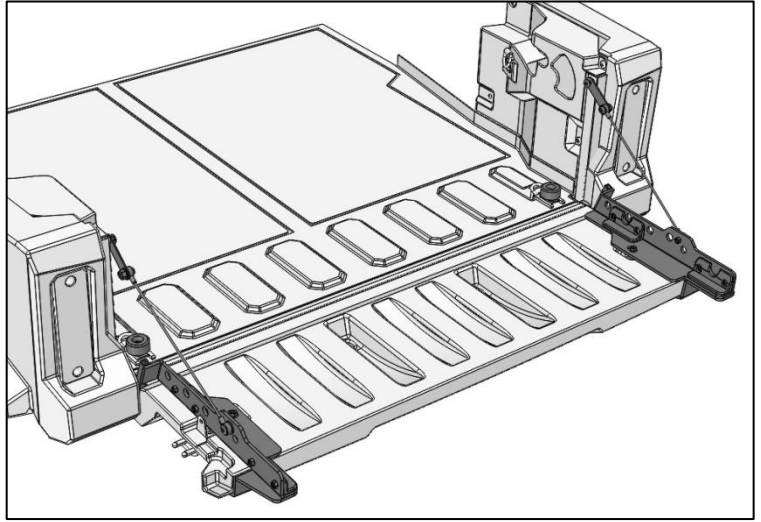
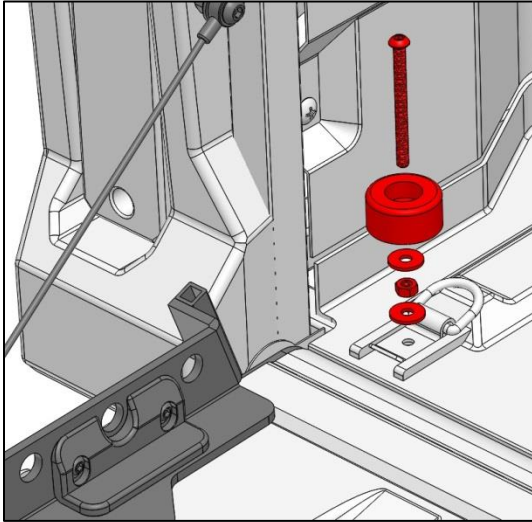


3. Install lower end of the cable to the tailgate brace using the other Honda cable bolt, washer, and an M6 non-flange nyloc nut. If the bolt does not go into the nut far enough to go through the plastic locking part of the nut, you can remove the washer. **Do not use the originally removed Honda acorn nut.**



4. Begin the bumper installation by removing the bolt holding the cargo tie down ring closest to the tailgate on the bed floor. **There is a nut on the other end of this bolt underneath the vehicle that must be removed.**

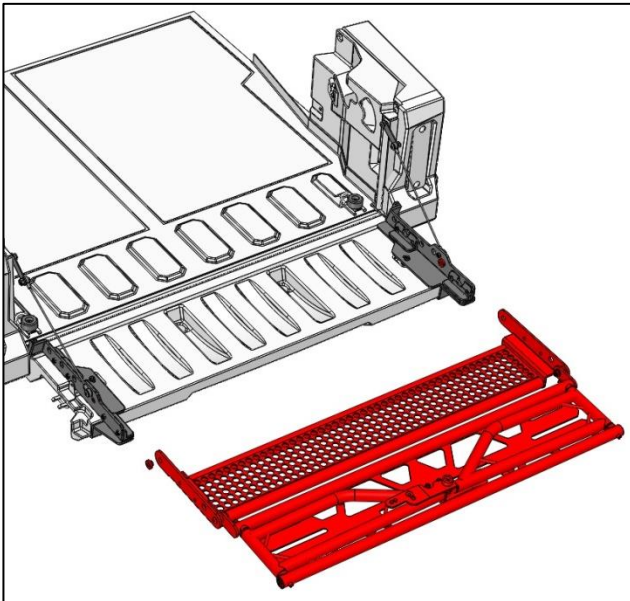
3. Cable and Bumper installation



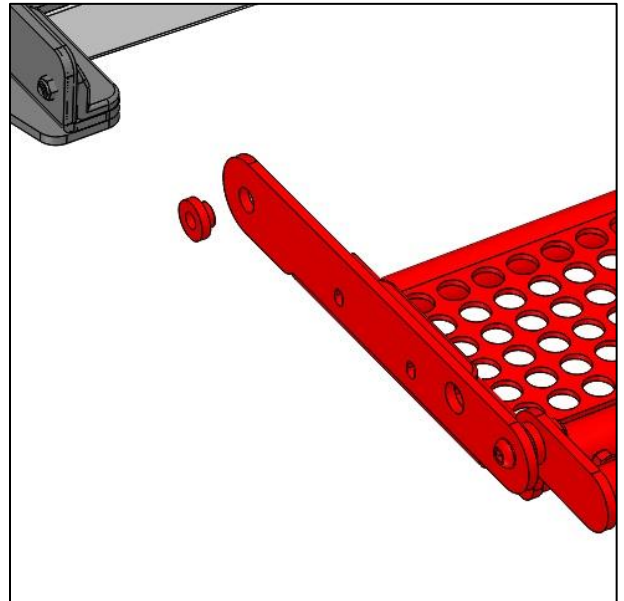
5. Install the large bumpers using an M6x70 button head bolt, washer, nut, and washer. Re-install and tighten the previously removed nut underneath the vehicle.

Your tailgate should now look like this.

4. Bed Extender installation

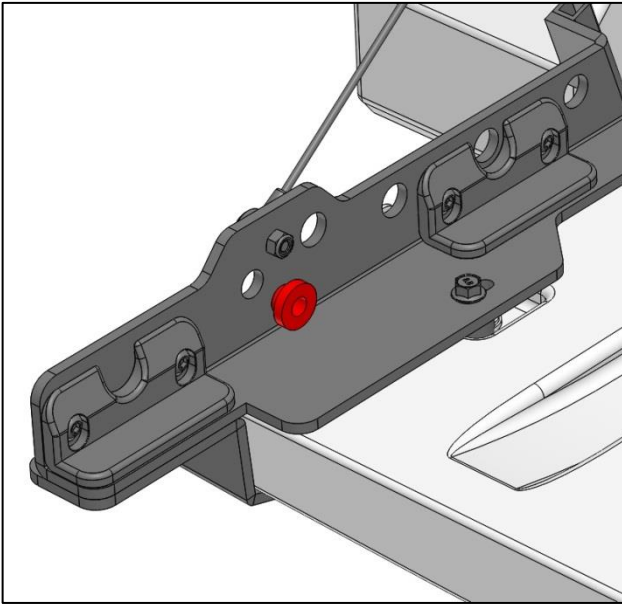


1. Orient the bed extender as shown with the flanges on each side pointing up. It may be useful to have a helper for these steps.

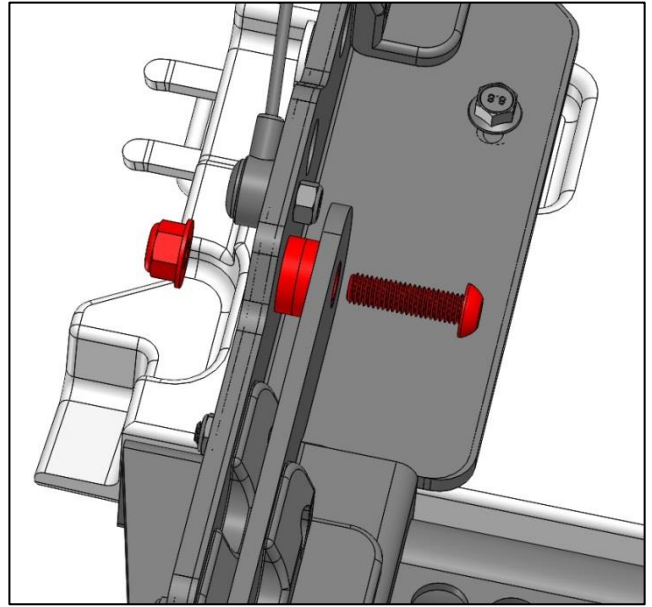


2. Insert a plastic bushing in the hole at the front of the mounting flange on each side.

4. Bed Extender installation

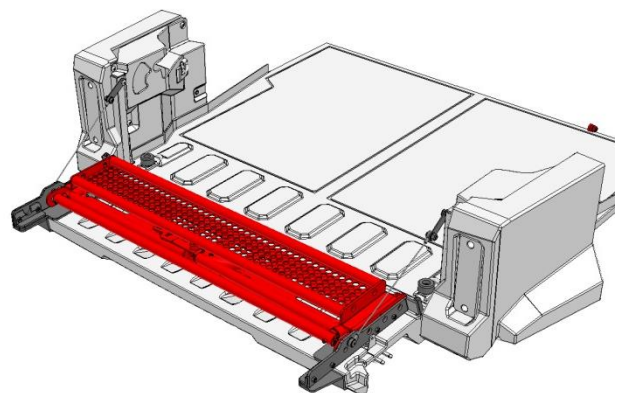
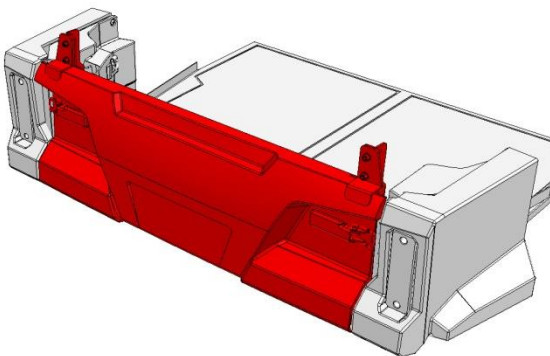


3. Install a plastic bushing into each tailgate brace in the location shown.



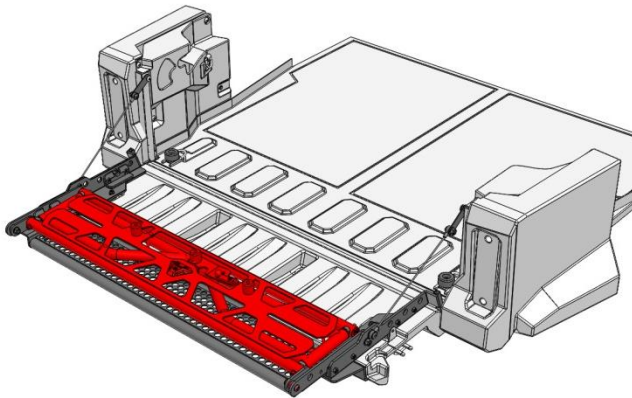
4. With a helper holding the extender in place and the two bushings on each side facing each other, fasten with an M8x30 button head bolt and M8 nyloc flange nut. The bolt must be oriented as shown. You may need to wiggle the tailgate braces around a bit to get the extender to fit between them. **Tighten the nut just enough to remove the play but allowing the extender to pivot freely.** You may now fully tighten the brace bolts you left loose in step 4 of tailgate brace installation.

5. Operation

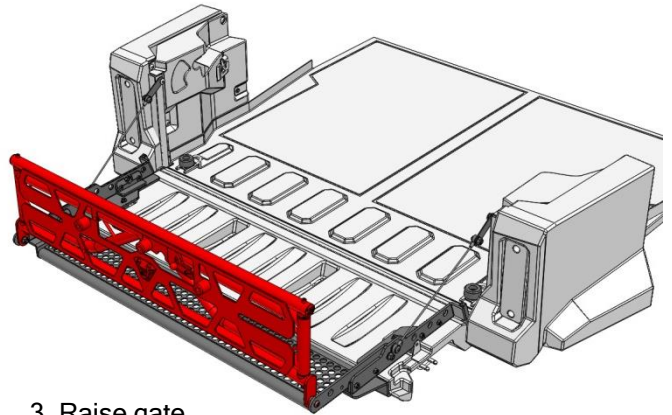


1. Open tail gate

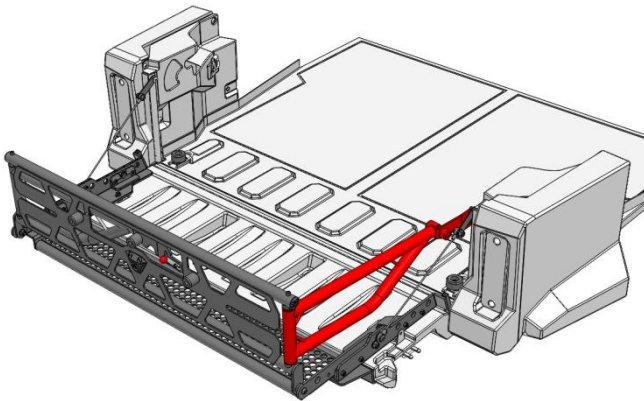
5. Operation



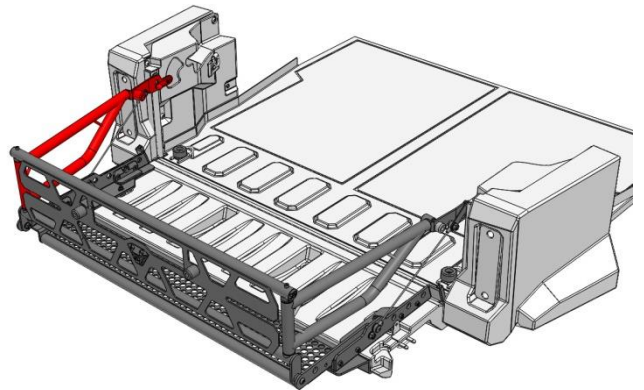
2. Unfold extender floor



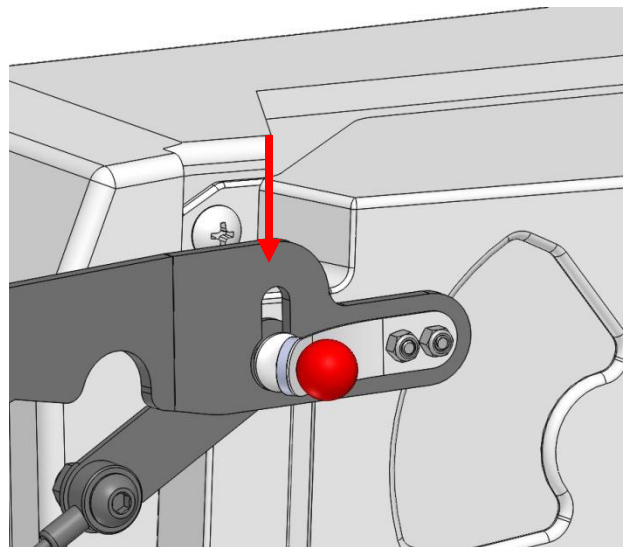
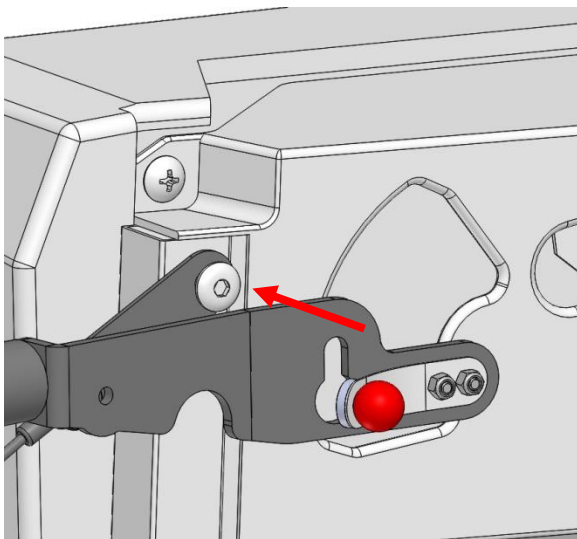
3. Raise gate



4. Unfold right side



5. Unfold left side. The left side will always unfold last and fold first.



5. To lock the extender, push the arm until the Honda cable bolt goes through the hole where the red knob on the spring tab is. The bolt head will push the tab out of the way allowing you to push the arm down, capturing the bolt head in the slot. The red knob will then snap back in the hole locking the arm in place on the bolt. To release the arm, pull the knob until you can lift the arm up and swing it away. The spring tab alignment may need to be adjusted occasionally.