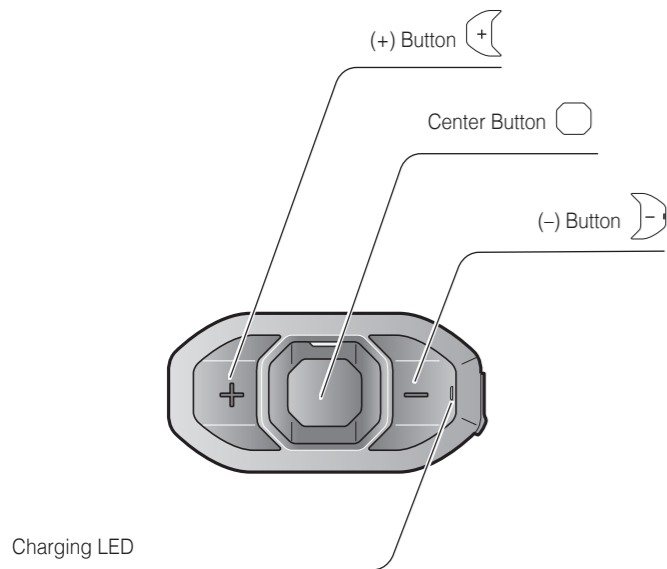
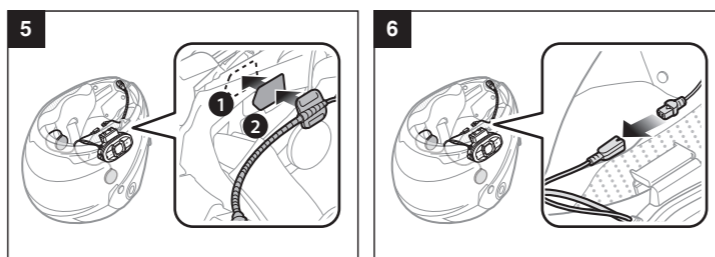
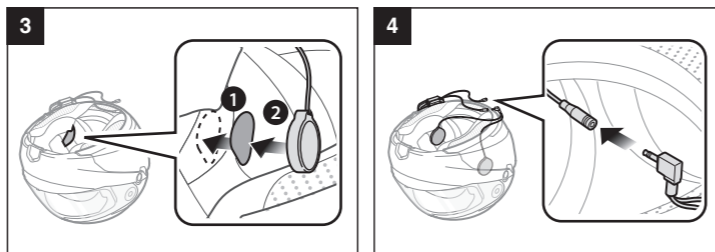
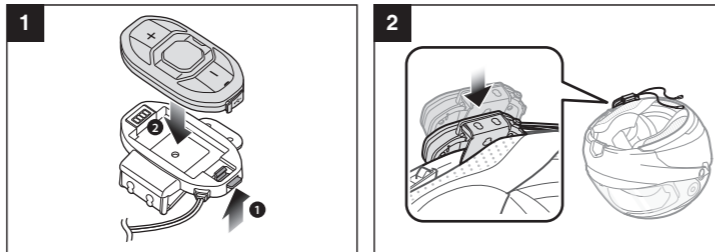


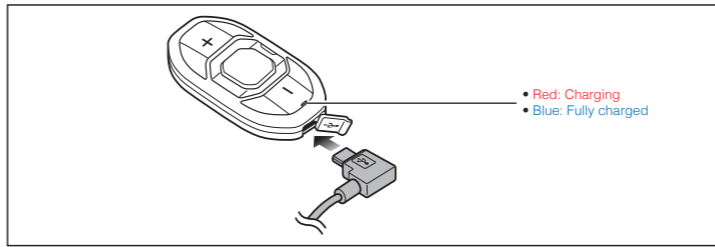
# Sena SF1 Quick Start Guide



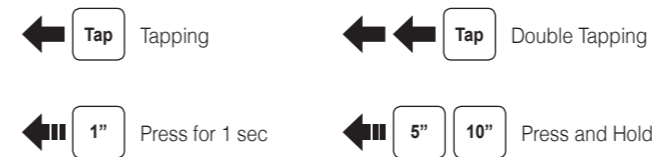
## Installation



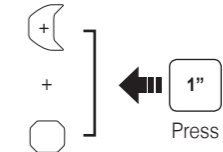
## Charging



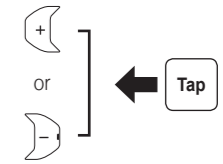
## Button Operation



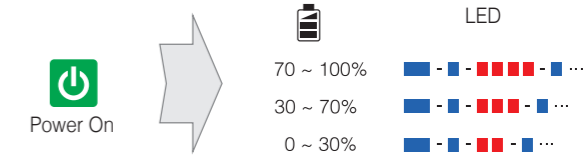
## Power On/Off



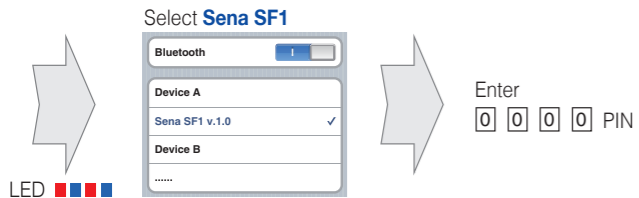
## Volume Adjustment



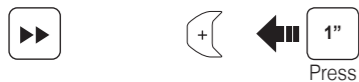
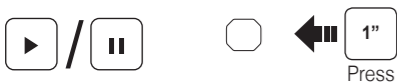
## Battery Check



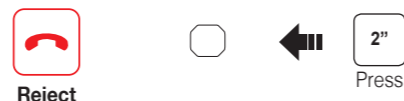
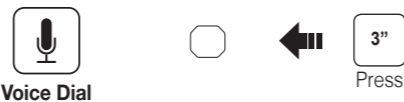
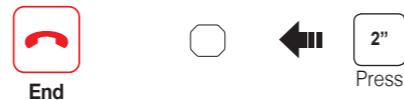
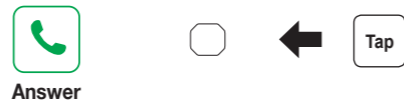
## Phone, Music Pairing



## Music Operation



## Mobile Phone Call Making and Answering



## Setting

### Configuration Menu



### Using the Sena Device Manager

Connect the headset to your computer via a USB cable. Launch the Sena Device Manager and click **DEVICE SETTING** to configure the headset settings.

For details about downloading the Sena Device Manager, please refer to the leaflet included in the package.

### Using the Sena SF Utility App

1. On your smartphone, download the **Sena SF Utility App** for Android or iPhone from Google Play or App Store. Please refer to [Sena.com/SF-app](http://Sena.com/SF-app) for more details.
2. Pair your smartphone with the headset.
3. Run the **Sena SF Utility App**. Swipe the screen to the right and tap Setting to configure the headset settings.

## Troubleshooting

### Factory Reset

If you want to restore the Sena SF1 to factory default settings, use the Factory Reset in the configuration menu. The headset automatically restores the default settings and turns off.

### Fault Reset

If the Sena SF1 is not working properly for any reason, reset by gently pushing the pin-hole reset button on the back of the main unit.

