

SENA

SENA



OUTRUSH

BLUETOOTH® HELMET

USER'S GUIDE

1.0.0

ENGLISH

RIDE CONNECTED

Blast your favorite tunes, talk over the intercom with your buddies, hear directions from your GPS and more, all through your OUTRUSH Bluetooth® System Helmet. With built-in Bluetooth® capabilities, HD Intercom, technology has never felt so minimal or freeing.



Bluetooth® 3.0



800 meters (880 yards)



One-to-One Intercom



Versatile Jog Dial



FM Radio



Firmware Upgradeable

GETTING STARTED

1. Update this product for free with the latest firmware to fully enjoy the new advanced features built into this product. Visit **sena.com** to see how to update your product.
2. Users can follow Sena on Facebook, YouTube, Twitter and Instagram to receive the most up to date information on products, helpful tips and all other announcements regarding Sena products.

SENA



SENA Technologies, Inc.

sena.com

Customer Support: support.sena.com

TABLE OF CONTENTS

1. ABOUT THE OTRUSH BLUETOOTH HELMET	7
<hr/>	
1.1 General Information	7
1.2 Product Details	8
1.2.1 Bluetooth System Button	9
1.2.2 Detachable Inner Parts	10
1.3 Package Contents	10
1.4 Wearing the Helmet	11
1.4.1 Putting on the Helmet	11
1.4.2 Removing the Helmet	11
1.4.3 Removing the Shield Visor	12
1.4.4 Installing the Shield Visor	13
1.4.5 Opening the Chin Guard	14
1.4.6 Removing the Breath Guard	15
1.4.7 Installing the Breath Guard	15
1.4.8 Removing the Cheek Pads	16
1.4.9 Installing the Cheek Pads	16
1.4.10 Removing the Inner Pad	17
1.4.11 Installing the Inner Pad	18
1.4.12 Removing the Sun Visor	19
1.4.13 Installing the Sun Visor	19
1.5 Pre-Ride Helmet Inspection	20
1.5.1 Checking the Exterior	20
1.5.2 Checking the Chinstrap	20
2. GETTING STARTED: BLUETOOTH SYSTEM	21
<hr/>	
2.1 Powering On and Off	21
2.2 Charging	21

2.3	Checking the Battery Level	22
2.4	Volume Adjustment	22
2.5	Downloadable Sena Software	23
2.5.1	Sena Device Manager	23
3.	PAIRING THE BLUETOOTH SYSTEM WITH OTHER BLUETOOTH DEVICES	23
3.1	Mobile Phone Pairing	23
3.1.1	Initially Pairing the OTRUSH	24
3.1.2	Pairing When the OTRUSH is Turned Off	24
3.2	Second Mobile Phone Pairing	25
4.	MOBILE PHONE USAGE	25
4.1	Making and Answering Calls	25
4.2	Speed Dialing	26
4.2.1	Assigning Speed Dial Presets	26
4.2.2	Using Speed Dial Presets	26
5.	BLUETOOTH INTERCOM	27
5.1	Intercom Pairing	27
6.	STEREO MUSIC	29
6.1	Playing Music with Bluetooth Devices	29

7. USING THE FM RADIO	29
7.1 FM Radio Operation	29
8. GENERAL SETTINGS	30
8.1 Function Priority	30
8.2 Configuration Menu	30
8.2.1 Assigning Speed Dial	31
8.2.2 VOX Phone (Default: Enable)	31
8.2.3 Voice Prompt (Default: Enable)	31
8.2.4 Delete All Pairings	32
8.3 Firmware Upgrades	32
9. TROUBLESHOOTING	32
9.1 Fault Reset	32
9.2 Factory Reset	32
10. MAINTENANCE AND CARE	33
10.1 Outer Shell	33
10.2 Inner Lining	33
10.3 Storing the Helmet	33
QUICK REFERENCE	34

1. ABOUT THE OTRUSH BLUETOOTH HELMET

1.1 General Information

This product is a motorcycle helmet.

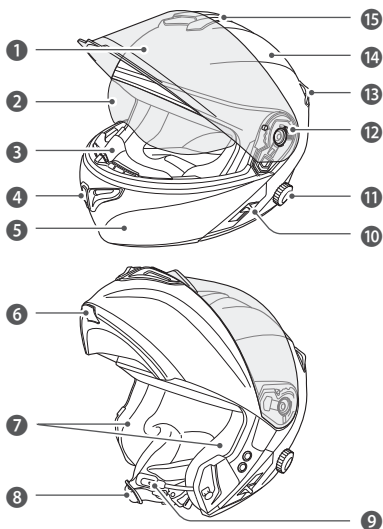
Do not use it for any other purpose than riding a motorcycle. If you use the helmet for anything else, it may not provide sufficient protection in an accident.

No helmet can protect the wearer against all possible impact scenarios.

For maximum protection, the helmet must fit properly on the head and its retention strap securely fastened under the chin. With the retention system comfortably but firmly adjusted, the helmet should allow sufficient peripheral vision when secured. If the helmet is too large, it may move on your head while riding. If the helmet can be removed when pulled from the back in an upward and forward direction, it's not fitted properly. This could cause the helmet to obstruct your vision while riding or come off in an accident, resulting in personal injury or death. Please refer to **Section 1.4: "Wearing the Helmet"** for more details about properly securing and wearing your helmet.

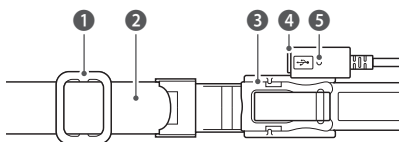
The contents of this helmet User's Guide are subjected to change without notice. Its illustration may differ from the actual product. The copyrights for the User's Guide belong to Sena Technologies, Inc. Reproduction or copying of the **User's Guide** without permission is strictly prohibited.

1.2 Product Details



No.	Name
1	Shield Visor
2	Sun Visor
3	Breath Guard
4	Chin Vent
5	Chin Guard
6	Chin Guard Lever
7	Speakers
8	Chinstrap

No.	Name
9	Microphone
10	Sun Visor Lever
11	Jog Dial
12	Shield Ratchet
13	Rear Vent
14	Shell
15	Top Vent



No.	Name
1	Strap Adjuster
2	Chinstrap
3	One-touch Bracket

No.	Name
4	DC Power Charging & Firmware Upgrade Port
5	Status LED

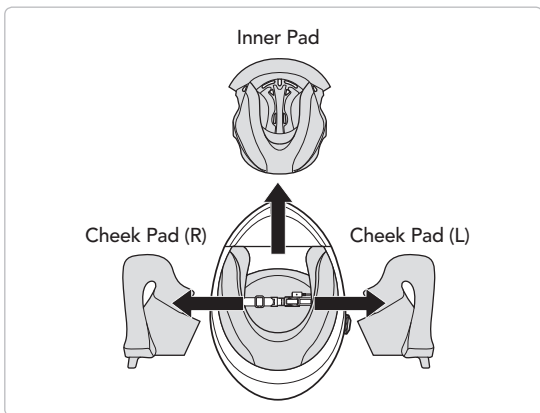
1.2.1 Bluetooth System Button

Rotate/Rotate
while Pressing



Tap/Press and Hold

1.2.2 Detachable Inner Parts



1.3 Package Contents



Helmet



Helmet Pouch



USB Power &
Data Cable



Boom Microphone
Sponges (2)

1.4 Wearing the Helmet

1.4.1 Putting on the Helmet

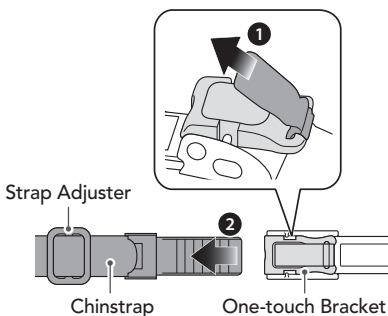
1. Unfasten the chinstrap by using the retention system.
2. Expand the helmet opening with your hand, and slide your head into the helmet.
3. Fasten the chinstrap as tight as possible without causing you pain.

1.4.2 Removing the Helmet

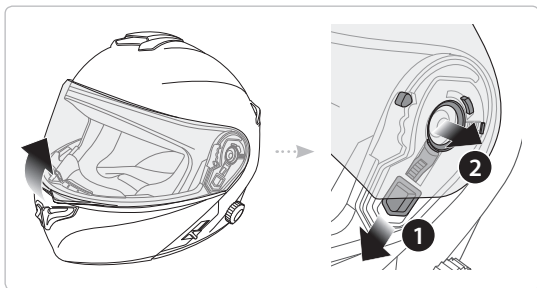
1. Unfasten the chinstrap by using the retention system.
2. Gently pull the padded chinstrap outward and slide the helmet off your head.

Note: Fastening the chinstrap after removing the helmet will help avoid scratching surfaces it's placed upon.

Quick-release retention system

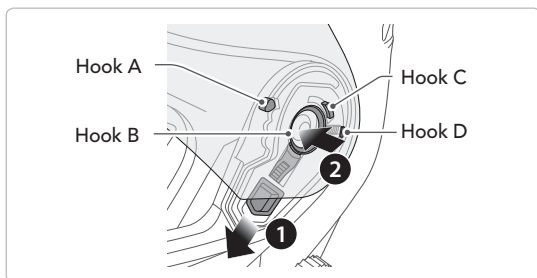


1.4.3 Removing the Shield Visor



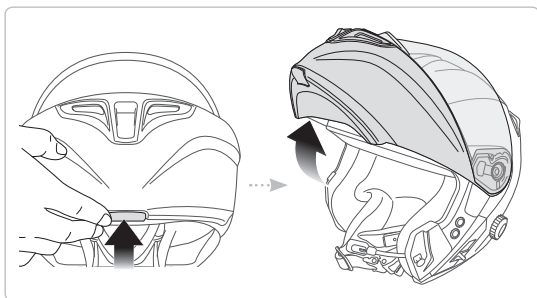
1. Open the shield visor to the fully opened position.
2. Pull the shield visor outward while pushing the shield ratchet lever downward.
3. Repeat Step 2 on the opposite side.

1.4.4 Installing the Shield Visor



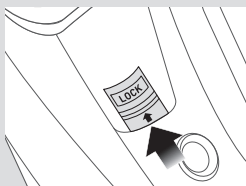
1. Align hook A, hook B, hook C, and hook D to the shield ratchet as shown in the illustration above.
2. Insert hooks A-D into the shield ratchet while pushing the shield ratchet lever downward.
3. Release the shield ratchet lever to lock the shield visor into place.
4. Repeat the process on the opposite side.

1.4.5 Opening the Chin Guard

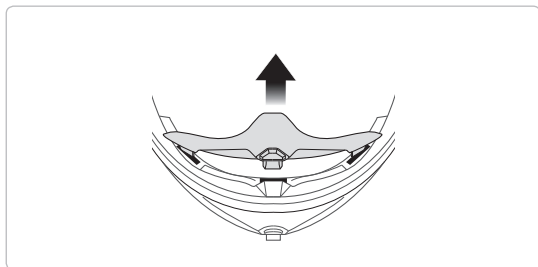


Pull the chin guard lever outward and lift the chin guard upward to the fully opened position.

Note: You can keep the chin guard up by pushing the chin guard lock lever upward on the left side of the helmet.

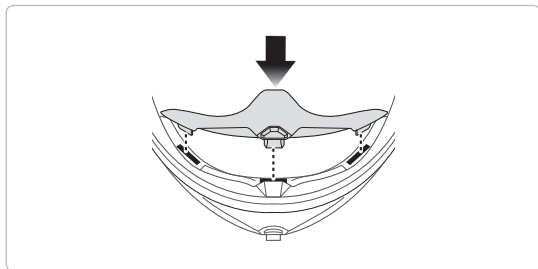


1.4.6 Removing the Breath Guard



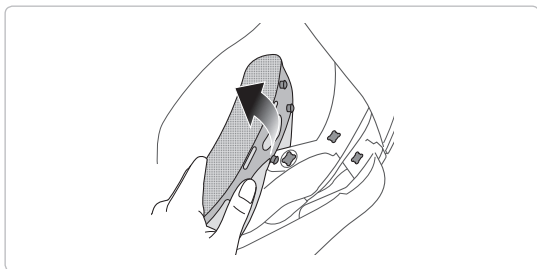
Pull the breath guard away from the chin guard until it separates completely.

1.4.7 Installing the Breath Guard



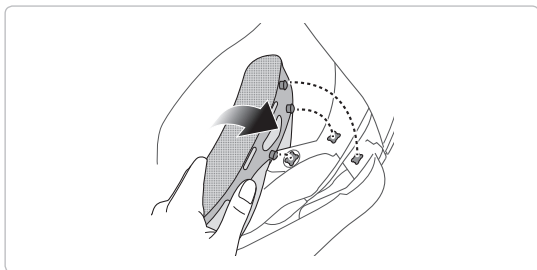
Insert the three tabs of the breath guard into the slots.

1.4.8 Removing the Cheek Pads



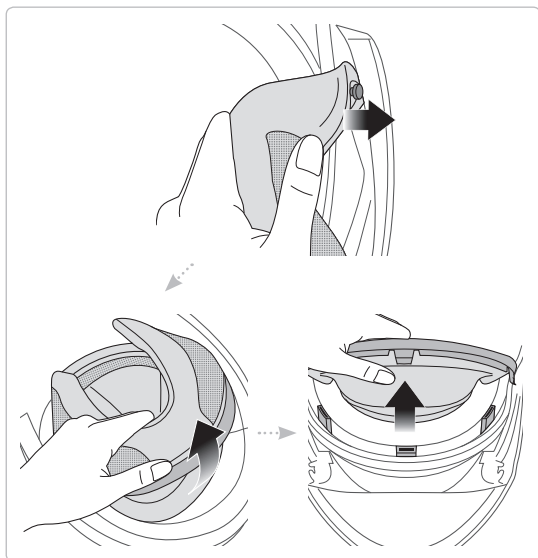
1. Unsnap the three fasteners of the cheek pad from the helmet.
2. Repeat the process on the opposite side.

1.4.9 Installing the Cheek Pads



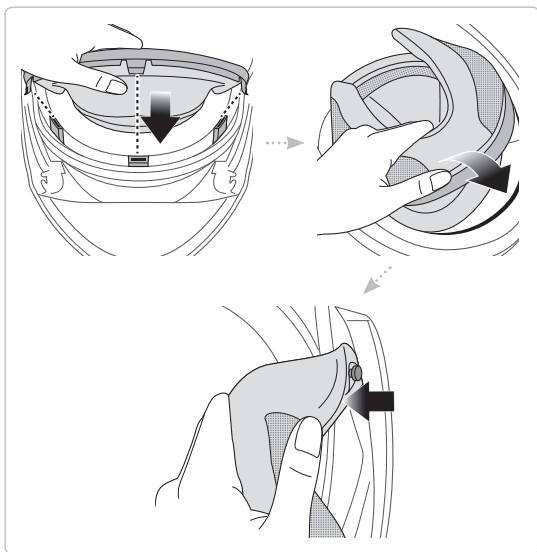
1. Pass the chinstrap through the hole of the cheek pad and snap the three fasteners of the cheek pad into place.
2. Repeat the process on the opposite side.

1.4.10 Removing the Inner Pad



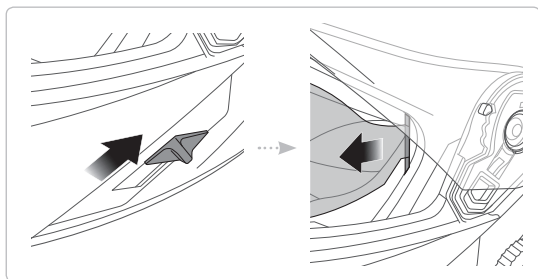
1. Detach the inner pad plate from the inner pin next to the chin guard.
2. Pull the inner pad away from the back of the helmet.
3. Hold the front section of the inner pad and pull it away from the front of the helmet.

1.4.11 Installing the Inner Pad



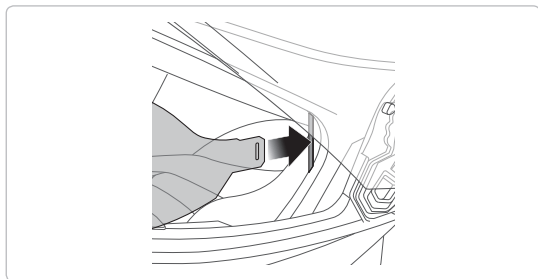
1. Align and insert the three tabs of the inner pad into the slots of the front section.
2. Insert the rear plastic plate of the inner pad into the space between the shell and EPS.
3. Attach the inner pad plate to the inner pin next to the chin guard.

1.4.12 Removing the Sun Visor



1. Slide the sun visor lever in the direction shown in the illustration above to lower the sun visor.
2. Pull one side of the visor in the direction shown in the illustration above.
3. Repeat Step 2 on the opposite side.

1.4.13 Installing the Sun Visor



1. Insert the sun visor tab into its slot until you hear a click.
2. Repeat the process on the opposite side.

1.5 Pre-Ride Helmet Inspection

1.5.1 Checking the Exterior

Check the helmet regularly for damage. Small, superficial scratches will not impair the helmet's protective qualities. In the case of more serious damage (cracks, dents, flaking and cracking paint, etc.), the helmet should no longer be used.

1.5.2 Checking the Chinstrap

1. Ensure that the chinstrap is properly routed under your chin.
2. To test the chinstrap tension, slip your index finger under the chinstrap and pull. If the chinstrap is loose under the chin, it needs to be tightened. If the chinstrap loosens when you pull on it, the helmet is not properly fitted. Undo the chinstrap completely and try fastening it again, then repeat the test.
3. If you are unable to fasten the chinstrap so that it fits firmly against the chin, check that your helmet is still the right size for you.

Note: Repeat the test after each adjustment.

⚠ CAUTION: Never ride with the chinstrap unfastened or incorrectly adjusted. The chinstrap should fit correctly and should not become loose when pulled. The fastener is not correctly closed if the chinstrap becomes loose when pulled.

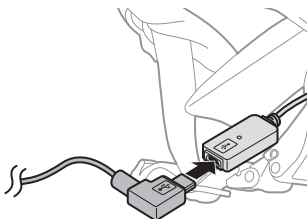
2. GETTING STARTED: BLUETOOTH SYSTEM

2.1 Powering On and Off

- Power On
Rotate while pressing the **Jog dial** clockwise for **1 second**.
- Power Off
Press and hold the **Jog dial** for **5 seconds**.

2.2 Charging

The Bluetooth system can be charged using many common methods via the supplied USB power & data cable: the **OUTRUSH** is compatible with 5 V input USB-charged devices only.



Depending upon the charging method, the Bluetooth system will be fully charged in about 3 hours.

Note:

- Please make sure to take off your helmet while charging. The Bluetooth system automatically turns off during charging.
- Any 3rd party USB charger can be used with Sena products if the charger is approved by either the FCC, CE, IC or other locally approved agencies that Sena accepts.

2.3 Checking the Battery Level

When the headset is powering on, the red LED flashes rapidly indicating the battery level.

4 flashes = High, 70 ~ 100%

3 flashes = Medium, 30 ~ 70%

2 flashes = Low, 0 ~ 30%

2.4 Volume Adjustment

You can raise or lower the volume by rotating the **Jog dial**. Volume is set and maintained independently at different levels for each audio source (i.e. phone, intercom), even when the Bluetooth system is rebooted.

- Volume up/down
Rotate the **Jog dial** clockwise or counterclockwise.

2.5 Downloadable Sena Software

2.5.1 Sena Device Manager

The **Sena Device Manager** allows you to upgrade the firmware and configure its settings directly from your PC or Apple computer. For more information on downloading the **Sena Device Manager**, please visit sena.com.

3. PAIRING THE BLUETOOTH SYSTEM WITH OTHER BLUETOOTH DEVICES

Before using the Bluetooth system with other Bluetooth devices for the first time, they'll need to be "paired". This enables them to recognize and communicate with one another whenever they're within range. The Bluetooth system can pair with multiple Bluetooth devices such as mobile phone, MP3 player, GPS or Sena SR10 Two-Way Radio Adapter via Mobile Phone Pairing, Second Mobile Phone Pairing. The Bluetooth system can also be paired with another Sena headset or Bluetooth system.

3.1 Mobile Phone Pairing

There are two ways to pair the phone.

3.1.1 Initially Pairing the OTRUSH

The Bluetooth system will automatically enter the phone pairing mode when you initially turn on the Bluetooth system or in the following situations:

- Rebooting after executing the **Factory Reset** feature; or
 - Rebooting after executing the **Delete All Pairings** feature.
1. Rotate while pressing the **Jog dial** clockwise for **1 second**. You will hear a voice prompt, **"Phone pairing"**.
 2. Select the **OTRUSH** in the list of the devices detected on the mobile phone. Enter 0000 for the PIN. Some mobile phones may not ask for the PIN.

Note:

- The phone pairing mode lasts for **3 minutes**.
- To cancel phone pairing, tap the **Jog dial**.

3.1.2 Pairing When the OTRUSH is Turned Off

1. Rotate while pressing the **Jog dial** clockwise for **5 seconds** when the Bluetooth system is turned off. You will hear a voice prompt, **"Configuration menu"**.
2. Rotate the **Jog dial** until you hear a voice prompt, **"Phone pairing"**. Search for Bluetooth devices on your mobile phone.

3. Select the **OUTRUSH** in the list of the devices detected on the mobile phone. Enter 0000 for the PIN. Some mobile phones may not ask for the PIN.

3.2 Second Mobile Phone Pairing

Pairing with Additional Mobile Phone, GPS, MP3 Players or Sena SR10 Two-way Radio Adapter.

1. Rotate while pressing the **Jog dial** clockwise for **5 seconds** when the Bluetooth system is turned off. You will hear a voice prompt, "**Configuration menu**".
2. Rotate the **Jog dial** until you hear a voice prompt, "**Second mobile phone pairing**". Search for Bluetooth devices on your mobile phone.
3. Select the **OUTRUSH** in the list of the devices detected on the mobile phone. Enter 0000 for the PIN. Some mobile phones may not ask for the PIN.

4. MOBILE PHONE USAGE

4.1 Making and Answering Calls

- Answering/Ending a call
Tap the **Jog dial**.
- Rejecting a call
Press and hold the **Jog dial** for **1 second**.
- Make a Call with Voice dialer
Rotate while pressing the **Jog dial** clockwise.

4.2 Speed Dialing

4.2.1 Assigning Speed Dial Presets

You need to assign speed dial numbers before using the speed dial. Speed Dial Presets could be assigned in the settings menu.

4.2.2 Using Speed Dial Presets

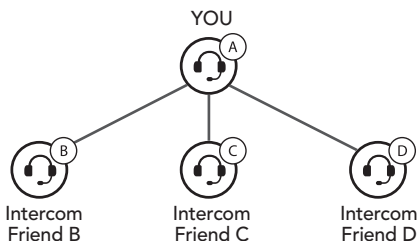
1. Rotate while pressing the **Jog dial** counterclockwise.
2. Rotate the **Jog dial** to navigate between the menus.
You will hear voice prompts for each menu item.
3. Tap the **Jog dial** to select a voice menu among the followings:

(1) Last number redial	(4) Speed dial 3
(2) Speed dial 1	(5) Cancel
(3) Speed dial 2	
4. To redial the last number called, tap the **Jog dial** when you hear a voice prompt saying "**Last number redial**".
5. To call one of the speed dials, tap the **Jog dial** when you hear a voice prompt, "**Speed Dial (#)**".
6. If you want to exit the speed dial immediately, rotate the **Jog dial** until you hear a voice prompt, "**Cancel**", and tap the **Jog dial**.

5. BLUETOOTH INTERCOM

5.1 Intercom Pairing

Up to three other people can be paired with the helmet for Bluetooth intercom conversations.



1. Rotate while pressing the **Jog dial** clockwise for **5 seconds** when the **two helmet (A and B)** are turned off. You will hear a voice prompt, "**Configuration menu**".
2. Rotate the **Jog dial** until you hear a voice prompt, "**Intercom pairing**".
3. Simply tap the **Jog dial** of any one of the two helmet A or B and wait until the intercom connection is automatically established.
4. Repeat steps 1 and 2 to pair with Intercom Friends C & D.
5. The intercom pairing queue is '**Last-Come, First-Served**'. If a headset has multiple paired headsets for intercom conversations, the last paired headset is set as **first intercom friend**. The previous intercom friend becomes **second intercom friend**, and **third intercom friend**.

Last-Come, First-Served



YOU



Intercom
Friend 1



YOU



Intercom
Friend 1



Intercom
Friend 2



YOU



Intercom
Friend 1



Intercom
Friend 2



Intercom
Friend 3

6. STEREO MUSIC

6.1 Playing Music with Bluetooth Devices

- Play or Pause music
Press and hold the **Jog dial** for **1 second**.
- Track forward/back
Rotate while pressing the **Jog dial** clockwise or counterclockwise.

7. USING THE FM RADIO

7.1 FM Radio Operation

- Start or Stop the FM radio
Press and hold the **Jog dial** for **3 seconds**.
- Seek up/down the radio channel
Rotate while pressing the **Jog dial** clockwise or counterclockwise.

8. GENERAL SETTINGS

8.1 Function Priority

The Bluetooth system operates in the following order of priority:

(highest)	Mobile phone
	Bluetooth Intercom
	FM Radio
(lowest)	Bluetooth stereo music

A lower priority function is always interrupted by a higher priority function.

8.2 Configuration Menu

You can set the configuration of the Bluetooth system by the voice menu instruction described below.

To enter the **Configuration Menu**, rotate while pressing the **Jog dial** clockwise for **5 seconds** when the Bluetooth system is turned off. You will hear a voice prompt, **"Configuration menu"**.

Configuration Setting	Enable/Disable or Execute
Phone Pairing	None
Second Mobile Phone Pairing	None
Intercom Pairing	None
Speed Dial	Execute
VOX Phone	Enable/Disable
Voice Prompt	Enable/Disable
Delete All Pairings	Execute
Factory Reset	Execute
Exit configuration	Execute

8.2.1 Assigning Speed Dial

1. To assign a phone number as a speed dial, rotate the **Jog dial** until you hear a voice prompt, **"Speed dial"**.
2. Tap the **Jog dial**, and you will hear a voice prompt, **"Speed dial one"** and **"Phone connected"**.
 - Rotate the **Jog dial** to select one of three speed dial numbers by hearing voice prompt, **"Speed dial (#)"**.
3. Call a phone number you want to assign and you will hear a voice prompt, **"Save speed dial (#)"**.
The phone number is automatically assigned to the selected speed dial number. Then the phone call will hang up immediately.
4. To exit the menu, rotate the **Jog dial** clockwise or counter clockwise until you hear a voice prompt, **"Cancel"**, and tap the **Jog dial** to confirm. You will then hear a voice prompt **"Cancel"**.

8.2.2 VOX Phone (Default: Enable)

If this feature is enabled, you can answer incoming calls by voice. When you hear a ringtone for an incoming call, you can answer the phone by saying a word such as "Hello" loudly or by blowing air into the microphone. VOX Phone is temporarily disabled if you are connected to intercom. If this feature is disabled, you have to tap the **Jog dial** to answer an incoming call.

8.2.3 Voice Prompt (Default: Enable)

You can disable voice prompts by configuration setting, but the following voice prompts are always on.

- Voice prompts for configuration setting menu
- Voice prompts for factory reset
- Voice prompts for speed dial
- Voice prompts for FM radio functions

8.2.4 Delete All Pairings

To delete all Bluetooth pairing information, rotate the **Jog dial** until you hear a voice prompt, "**Delete all pairings**", and tap the **Jog dial** to confirm.

8.3 Firmware Upgrades

The Bluetooth system supports firmware upgrades. You can update the firmware using the **Sena Device Manager**. Please visit Sena Bluetooth website at **sena.com** to check the latest software downloads.

9. TROUBLESHOOTING

9.1 Fault Reset

When the Bluetooth system is not working properly, you can easily reset the unit. When the USB charging & data cable connects a power supply to the system, the system will automatically be turned off and a fault reset will occur.

9.2 Factory Reset

If you want to restore the headset to factory default settings, use the **Factory Reset** in the configuration menu. The headset automatically restores the default settings and turns off.

10. MAINTENANCE AND CARE

10.1 Outer Shell

Use a soft cloth and a small amount of water to remove bugs from the exterior.

Note: Never use gasoline, diesel fuel, thinners or solvents to clean the helmet. These substances can cause serious damage to the helmet, even though the resulting damage may not be visible. The full safety function of the helmet can then no longer be guaranteed.

10.2 Inner Lining

The inner lining of the helmet is completely removable. Its headliner can be washed by hand using mild soap at a maximum temperature of 30°C (86°F). Allow the lining to dry at room temperature.

10.3 Storing the Helmet

Store the helmet in a dry, dark, well-ventilated location, out of the reach of children and animals. Always position the helmet so that it cannot fall to the floor. Damage that occurs in this way is not covered by the warranty.

QUICK REFERENCE

Type	Operation	Button Command
Basic Function	Power on	Rotate while pressing the Jog dial clockwise for 1 second
	Power off	Press and hold the Jog dial for 5 seconds
	Volume adjustment	Rotate the Jog dial
Mobile Phone	Answer & end phone call	Tap the Jog dial
	Voice dial	Rotate while pressing the Jog dial clockwise
	Speed dial	Rotate while pressing the Jog dial counterclockwise
	Reject incoming call	Press and hold the Jog dial for 1 second
Intercom	Start/End Intercom	Tap the Jog dial
Music	Play/Pause	Press and hold the Jog dial for 1 second
	Track forward/back	Rotate while pressing the Jog dial clockwise/counterclockwise
FM Radio	FM radio on/off	Press and hold the Jog dial for 3 seconds
	Seek up/down	Rotate while pressing the Jog dial clockwise/counterclockwise
Configuration Menu		1. Turn off the Bluetooth system 2. Rotate while pressing the Jog dial clockwise for 5 seconds



Copyright © 2020 Sena Technologies, Inc.
All rights reserved.

© 1998–2020 Sena Technologies, Inc. All rights reserved.

Sena Technologies, Inc. reserves the right to make any changes and improvements to its product without providing prior notice.

Sena™ is a trademark of Sena Technologies, Inc. or its subsidiaries in the USA and other countries. SF1™, SF2™, SF4™, SFR™, SRL™, Momentum™, Momentum INC™, Momentum Lite™, Momentum Pro™, Momentum INC Pro™, Momentum EVO™, Cavalry™, Latitude SR™, Latitude SX™, 30K™, 50S™, 50R™, 20S EVO™, 20S™, 10S™, 10C™, 10C PRO™, 10C EVO™, 10U™, 10Upad™, 10R™, 3S™, SMH5™, SMH5-FM™, SMH5 MultiCom™, SMH10™, SMH10R™, SPH10™, SPH10H-FM™, Savage™, Prism Tube WiFi™, Prism™, Bluetooth Audio Pack for GoPro®, R1™, R1 EVO™, R1 EVO CS™, RC1™, RC3™, RC4™, Handlebar Remote™, Wristband Remote™, PowerPro Mount™, Powerbank™, FreeWire™, WiFi Docking Station™, WiFi Sync Cable™, +mesh™, +Mesh Universal™, Econo™, OUTRUSH™, OUTSTAR™, EcoCom™, SR10™, SR10i™, SM10™, X1™, X1 Pro™, Expand™, Bluetooth Mic & Intercom™, Tufftalk™, Tufftalk Lite™, Tufftalk M™ are trademarks of Sena Technologies, Inc. or its subsidiaries. These trademarks may not be used without the express permission of Sena.

GoPro® is a registered trademark of Woodman Labs of San Mateo, California. Sena Technologies, Inc. ("Sena") is not affiliated with Woodman Labs, Inc. The Sena Bluetooth Pack for GoPro® is an aftermarket accessory specially designed and manufactured by Sena Technologies, Inc. for the GoPro® Hero3 and Hero4 allowing for Bluetooth capabilities.

The Bluetooth® word mark and logos are owned by the Bluetooth SIG, Inc. and any use of such marks by Sena is under license. iPhone® and iPod® touch are registered trademarks of Apple Inc.

Address: 152 Technology Drive Irvine, CA 92618