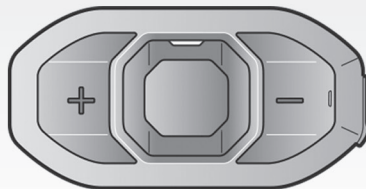


# SFR

Motorcycle Bluetooth®  
Communication System



-  Bluetooth®  
4.1
-  1.2 km  
0.8 mile Intercom
-  Four-way  
Intercom
-  Voice Prompt
-  Advanced  
Noise Control
-  Universal  
Intercom
-  Music Sharing
-  FM Radio
-  Group  
Intercom
-  Firmware  
Upgradeable
-  FM Sharing
-  Audio Source  
Priority
-  Audio Overlay

© 1998-2018 Sena Technologies, Inc. All rights reserved.

Sena Technologies, Inc reserves the right to make any changes and improvements to its product without providing prior notice.

Sena™ is a trademark of Sena Technologies, Inc. or its subsidiaries in the USA and other countries. SF1™, SF2™, SF4™, SFR™, SRL™, Momentum™, Momentum INC™, Momentum Lite™, Momentum Pro™, Momentum INC Pro™, Cavalry™, 30K™, 20S EVO™, 20S™, 10S™, 10C™, 10C Pro™, 10U™, 10Upad™, 10R™, 3S™, SMH5™, SMH5-FM™, SMH5 MultiCom™, SMH10™, SMH10R™, SPH10™, SPH10H-FM™, Savage™, Prism Tube WiFi™, Prism Tube™, Prism™, Bluetooth Audio Pack for GoPro®, R1™, RC1™, RC3™, RC4™, Handlebar Remote™, Wristband Remote™, PowerPro Mount™, Powerbank™, FreeWire™, SR10™, SR10j™, SM10™, X1™, X1 Pro™, Expand™, Bluetooth Mic & Intercom™, Tufftalk™, Tufftalk Lite™ are trademarks of Sena Technologies, Inc. or its subsidiaries. These trademarks may not be used without the express permission of Sena.

GoPro® is a registered trademark of Woodman Labs of San Mateo, California. Sena Technologies, Inc. (“Sena”) is not affiliated with Woodman Labs. The Sena Bluetooth Pack for GoPro® is an after-market accessory specially designed and manufactured by Sena Technologies, Inc. for the GoPro® Hero3 and Hero4 allowing for Bluetooth capabilities.

The Bluetooth® word mark and logos are owned by the Bluetooth SIG, Inc. and any use of such marks by Sena is under license. iPhone, iPod touch are registered trademarks of Apple Inc. Zumo™ is a trademark of Garmin Ltd. or its subsidiaries. TomTom™ is the trademark or registered trademark owned by TomTom International B.V. Other trademarks and tradenames are those of their respective owners.

# CONTENTS


Safety Precautions .....	4	7 INTERCOM.....	18
1 PACKAGE CONTENTS .....	7	7.1 Two-way Intercom .....	18
2 INSTALLING THE HEADSET ON YOUR HELMET .....	8	7.2 Multi-Way Intercom.....	19
2.1 Installing the Main Unit.....	8	8 THREE-WAY CONFERENCE PHONE CALL WITH INTERCOM PARTICIPANT .....	20
2.2 Installing the Speakers.....	9	9 GROUP INTERCOM .....	21
2.3 Installing the Microphones.....	9	10 UNIVERSAL INTERCOM.....	21
3 GETTING STARTED.....	11	11 FM RADIO .....	22
3.1 Product Details.....	11	11.1 FM Radio On/Off .....	22
3.2 Powering On and Off.....	11	11.2 Preset Stations.....	22
3.3 Charging.....	11	11.3 Seek and Save .....	22
3.4 Checking the Battery Level.....	11	11.4 Scan and Save.....	23
3.5 Volume Adjustment .....	12	11.5 Temporary Preset .....	23
3.6 Muting the Microphone .....	12	11.6 FM Sharing .....	23
3.7 Sena Softwares .....	12	11.7 Region Selection .....	24
4 PAIRING THE HEADSET WITH BLUETOOTH DEVICES .....	13	12 FUNCTION PRIORITY .....	24
4.1 Mobile Phone Pairing - Mobile Phone, Bluetooth Stereo Device .....	13	13 CONFIGURATION SETTING .....	25
4.2 Second Mobile Phone Pairing - Second Mobile Phone, GPS, and SR10.....	13	13.1 Headset Configuration Setting.....	25
4.3 Advanced Selective Pairing: A2DP Stereo or Handsfree.....	14	13.2 Software Configuration Setting .....	26
4.4 Intercom Pairing .....	15	14 FIRMWARE UPGRADE .....	30
5 MOBILE PHONE, GPS, SR10 .....	16	15 TROUBLESHOOTING .....	30
5.1 Mobile Phone Call Making and Answering.....	16	15.1 Factory Reset .....	30
5.2 Speed Dialing.....	16		
5.3 GPS Navigation .....	17		
6 STEREO MUSIC .....	17		
6.1 Bluetooth Stereo Music .....	17		
6.2 Music Sharing .....	17		


## Safety Precautions

Please ensure that the product is properly used by observing the safety precautions below to prevent any risk of serious injury, death and/or damage to property.

### Hazard alert signal words

The following safety symbols and signal words are used in this manual.

 **WARNING** Indicates a potential hazardous situations that, if not avoided, could result in death or serious injury.

 **CAUTION** Indicates a potential hazardous situation that, if not avoided, could result in minor or moderate injury.

**NOTICE** Indicates information considered important, but not hazard-related. If not avoided, it could cause damage to your product.

*Note* Notes, usage tips, or additional information

### Product Use

Observe the following precautions to avoid injury or damage to your product while using the product.

 **WARNING**

- Use of the product at a high volume for a long period of time may damage your eardrums or hearing ability.

- When relevant, follow all regulations regarding the use of the camera.
  - (1) Do not use your camera in an aircraft, unless permitted.
  - (2) Turn off the camera when you are near medical equipment. Your camera can cause interference with medical devices in hospital or healthcare facilities.
- The camera generates a low level magnetic field. Keep a safe distance between the camera and cardiac pacemakers to avoid potential interference. Turn off the camera immediately if your camera indicates interference with a pacemaker and contact the pacemaker manufacturer or a physician.
- Avoid interference with other electronic devices. Your camera generates a low level magnetic field that may interfere with unsealed or improperly shielded electronic equipment in homes or vehicles. Consult the manufacturers of your electronic devices to resolve any interference problems you experience.
- Never use a damaged memory card. This may result in electric shock, camera malfunction, or fire.
- Careless use of the product on the road is risky and may result in serious injury, death or damage. You must heed all safety precautions in all documents that come with this product. This will help minimize the chance these risks may occur while riding.
- In any place where wireless communication is prohibited, such as hospitals or airplanes, turn off the power. In a place where wireless communication is prohibited, electromagnetic waves may cause hazards or accidents.
- Before riding, fasten the product from the helmet, and double-check that it is properly fastened. Separation of the product while riding will cause damage to the product and may result in an accident.
- When you use the product while you operating any vehicle or equipment such as motorcycles, scooters, mopeds, ATVs, or quadbikes (hereinafter called "transportation means"), you need to follow the safety precautions provided by the manufacturer of the vehicle.
- When you use the product, use good judgment; never use it under the influence of alcohol or drugs or when you are extremely tired.

**⚠ CAUTION**

- If the product emits an unusual smell, feels hot, or appears abnormal in any other way while using or charging, stop using it immediately. It may cause damage, explosion, or fire. Contact your sales location if any of these problems are observed.
- Do not use the product in an explosive atmosphere. If you are in such a location, turn off the power and heed any regulations, instructions, and signs in the area.

**NOTICE**

- Attaching the product to the helmet is considered a modification to the helmet and may void your helmet's warranty or compromise your helmet's functionality. This may entail risks during an accident, so be fully aware of this fact before using the product. Should you not accept this fact, you may return the product for a full refund.
- In some regions, it is prohibited by law to ride motorcycles while wearing headsets or earbuds. Therefore be certain you are aware of all relevant laws in the region where you are using the product and are sure that you comply with them.
- The headset is for motorcycle helmets only. To install the headset, you must follow the installation instructions shown in the User's Guide.
- Do not impact the product with sharp tools as this may damage the product.
- Keep product away from pets or small children. They may damage the product.
- Any changes or modifications to the equipment not expressly approved by the party responsible for compliance could void the limited warranty to operate the equipment.
- High internal temperature may result in noisy photos. This is not a malfunction and does not affect your camera's overall performance.
- Check that the camera is operating properly in advance. Any file loss or camera damage caused by camera malfunction or improper use is not covered under warranty.

**Battery**

Your product has a built-in battery. Be careful to heed all safety information in this guide. Failure to carefully observe the safety precautions can cause battery heat generation, bursting, fire and serious personal injury.

**⚠ WARNING**

- Do not use the product in direct sunlight for a long period of time. Doing so can damage the product and generate heat that can cause burns.
- Do not use or store the product inside cars in hot weather. It may cause the battery to generate heat, rupture, or ignite.
- Do not continue charging the battery if it does not recharge within the specified charging time. Doing so may cause the battery to become hot, explode, or ignite.
- Do not leave the product near open flames. Do not dispose of the product in a fire. It may cause the battery to become hot, explode, or ignite and cause serious injury.
- Never attempt to charge a battery with the charger which has been physically damaged. It may cause explosion and/or accidents.

**NOTICE**

- Battery life may vary depending on conditions, environmental factors, functions of the product in use, and devices used with it.

**Product Storage and Management**

Take the following precautions to avoid personal injury or damage to your product while storing and maintaining the product.

**⚠ CAUTION**

- Do not dispose of the product with household waste. The built-in battery is not to be disposed of in municipal waste stream and requires separate collection. Disposal of the product should be done in accordance with the local regulations.

**NOTICE**

- Keep the product free of dust. Dust may damage mechanical and electronic parts of the product.
- The product should be stored at room temperature. Do not expose the product to extremely high or low temperature as this may reduce the life span of electronic devices, damage the battery, and/or melt plastic parts of the product.
- Do not clean the product with cleaning solvents, toxic chemicals, or strong detergents as this may damage the product.
- Do not paint the product. Paint may obstruct moving parts or interfere with the normal operation of the product.
- Do not drop or otherwise shock the product. It may damage the product or its internal electronic circuits.
- Do not disassemble, repair or modify the product as this may damage the product and invalidate the product warranty.
- Do not store the product in humid environments, especially for long periods of time. It may damage the internal electronic circuits.
- Battery performance will deteriorate over time if stored for a long period of time without being used.
- Do not store the camera in proximity to magnetic fields. Doing so may result in camera malfunction.
- Be careful to protect the lens by avoiding rough handling or physical shock.
- Wipe the surface of the lens with a soft cloth in the following situations:
  - (1) When there are fingerprints on the lens surface.
  - (2) When the lens is used in hot or humid environments, such as near oceans or rivers.
- Store the product in a well-ventilated room to protect the lens from dirt and dust.

# 1 PACKAGE CONTENTS

## • Headset Main Unit



## • Hook and Loop Fasteners for Main Unit (4)



## • Double Sided Adhesive Tapes for Main Unit (2)



## Speaker

## • Speakers



## • Hook and Loop Fasteners for Speakers (2)



## Wired Boom Microphone

### • Wired Boom Microphone



### • Microphone Sponges (2)



### • Hook and Loop Fastener for Wired Boom Microphone



### • Boom Microphone Holder



### • Hook and Loop Fastener for Boom Microphone Holder



## Wired Microphone

### • Wired Microphone



### • Hook and Loop Fastener for Wired Microphone



## Others

### • USB Power & Data Cable

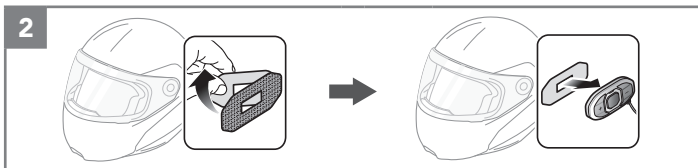
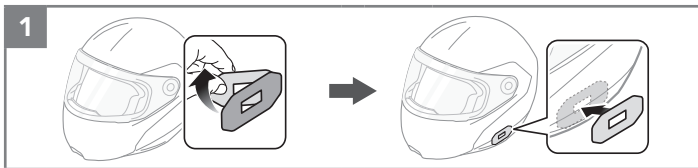


## 2 INSTALLING THE HEADSET ON YOUR HELMET

### 2.1 Installing the Main Unit

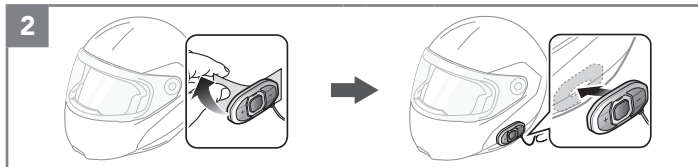
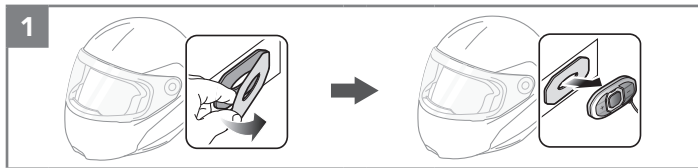
#### 2.1.1 Using the Hook and Loop Fasteners for Main Unit

1. Attach the hook fastener to the helmet and attach the loop fastener to the back plate of the main unit.
2. Attach the main unit using the hook and loop fasteners that you fitted. Make sure that the main unit is firmly attached to the helmet.



#### 2.1.2 Using the Double Sided Adhesive Tapes for Main Unit

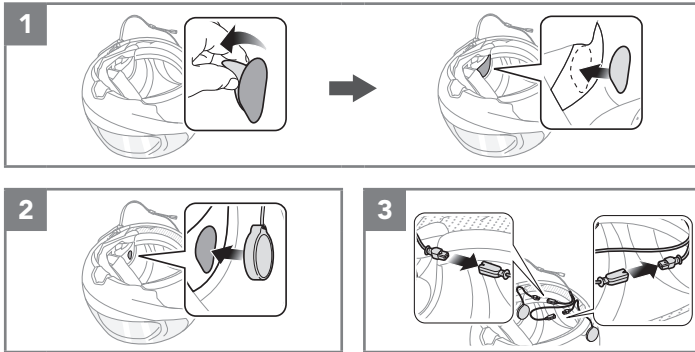
1. Attach double sided adhesive tapes to the back plate of the main unit.
2. Attach double sided adhesive tapes to the main unit on the left side of your helmet.
3. Make sure that the main unit sticks on the helmet firmly. Maximum adhesion occurs after 24 hours.





## 2.2 Installing the Speakers

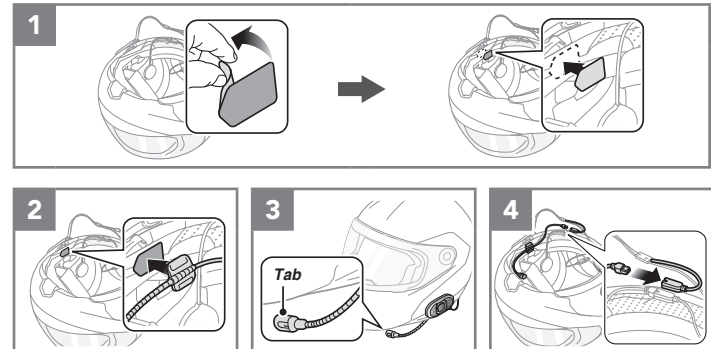
1. Attach the hook and loop fasteners for speakers to the ear pockets inside the helmet.
2. Attach the speakers to the hook and loop fasteners for speakers inside the helmet.
3. Align the arrows on the main unit and speaker cables and insert speaker cables into each speaker connector.



## 2.3 Installing the Microphones

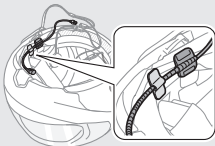
### 2.3.1 Using the Wired Boom Microphone

1. Attach the hook and loop fastener for wired boom microphone on the inside surface of the left external shell.
2. Attach the wired boom microphone's mounting plate to the hook and loop fastener.
3. Adjust the head of the microphone so that the tab is facing away from your mouth.
4. Align the arrows on the main unit and microphone cables and insert the microphone cable into the microphone connector.



*Note:*

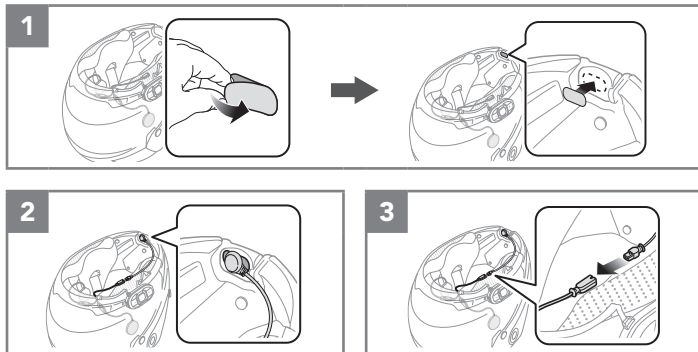
You can use the boom microphone holder after attaching the hook and loop fastener for boom microphone holder on it to ensure secure installation.



### 2.3.2 Using the Wired Microphone

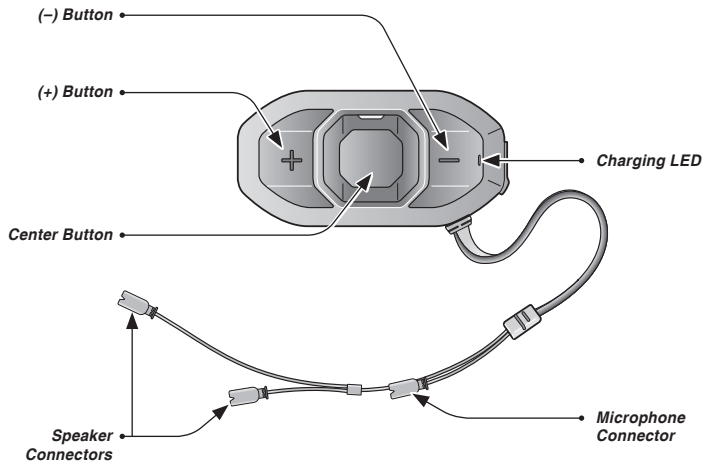
If you have a full face helmet, you can use the wired microphone.

1. Attach the hook and loop fastener for wired microphone on the inside of the helmet's chin guard.
2. Attach the wired microphone to the hook and loop fastener for wired microphone.
3. Align the arrows on the main unit and microphone cables and insert the microphone cable into the microphone connector.



## 3 GETTING STARTED

### 3.1 Product Details



### 3.2 Powering On and Off

To power on the headset, press and hold the Center Button and the (+) Button for 1 second. To power off the headset, tap the Center Button and the (+) Button.

### 3.3 Charging

The headset can be charged using many common methods via the supplied USB power & data cable. The LED turns red while the headset is charging and turns blue when it is fully charged. Depending upon the charging method, the headset will be fully charged in about 1.5 hours.

### 3.4 Checking the Battery Level

#### 3.4.1 LED Indicator

When the headset is powering on, the red LED flashes rapidly indicating the battery level.

4 flashes = High, 70~100%

3 flashes = Medium, 30~70%

2 flashes = Low, 0~30%

### **3.4.2 Voice Prompt Indicator**

When you power on the headset, keep pressing the Center Button and the (+) Button simultaneously for about 5 seconds until you hear high tone triple beeps. Then you will hear a voice prompt indicating the battery level is high, medium, or low.

### **3.5 Volume Adjustment**

You can raise or lower the volume by tapping the (+) Button or the (-) Button. Volume is set and maintained independently at different levels for each audio source, even when the headset is rebooted.

### **3.6 Muting the Microphone**

To mute or unmute the microphone, press and hold the Center Button and the (-) Button for 1 second. When the microphone is muted, you will hear descending beeps every 10 seconds. When you unmute the microphone, you will hear ascending beeps and the microphone will be active.

## **3.7 Sena Softwares**

### **3.7.1 Sena Device Manager**

You can upgrade the headset's firmware and configure its settings directly from your PC or Apple computer. Download the Sena Device Manager, please visit [sena.com](https://sena.com).

### **3.7.2 Sena Smartphone App**

You can configure its settings directly from your smartphone. Download the Sena Smartphone App for Android or Apple operating systems from [sena.com](https://sena.com).

## 4 PAIRING THE HEADSET WITH BLUETOOTH DEVICES

You can pair the headset with Bluetooth mobile phones, Bluetooth stereo devices such as MP3, SR10, or GPS, and with other Sena Bluetooth headsets. The pairing operation is required only once for each Bluetooth device. The headset can also be paired with up to three other Sena headsets.

### 4.1 Mobile Phone Pairing - Mobile Phone, Bluetooth Stereo Device

1. To enter the configuration menu, press and hold the Center Button for 10 seconds until you hear the voice prompt, **“Configuration menu”**.
2. By tapping the (+) Button, you will hear the voice prompt, **“Phone pairing”**.
3. Search for Bluetooth devices on your mobile phone. Select the Sena SFR in the list of the devices detected on the mobile phone.
4. If your mobile phone asks for a PIN, enter 0000.

### 4.2 Second Mobile Phone Pairing - Second Mobile Phone, GPS, and SR10

1. To enter the configuration menu, press and hold the Center Button for 10 seconds until you hear the voice prompt, **“Configuration menu”**.
2. Tap the (+) Button until you hear a voice prompt, **“Second mobile phone pairing”**.
3. Search for Bluetooth devices on your mobile phone. Select the Sena SFR in the list of the devices detected on the mobile phone.
4. If your mobile phone asks for a PIN, enter 0000.

*Note:*

- 1. If you have two audio (A2DP) devices connected to your headset then the audio from one device will interrupt the audio from the other device. For example, if you are playing music from the primary mobile phone, then it can be interrupted by playing music from the secondary mobile phone and vice versa.*
- 2. You have to use a motorcycle specific GPS, which transmits turn-by-turn voice instructions to the headset by Bluetooth.*
- 3. The Sena SR10 is a Bluetooth two-way radio adapter for group communication, and uses Hands-Free-Profile. The incoming audio from the two-way radio via SR10 is heard in the background while having an intercom conversation or a mobile phone call.*
- 4. The GPS navigation or a radar detector could be connected to the SR10 by wire. The GPS voice instruction or the radar detector alarm is also heard in the background via SR10 while having an intercom conversation or a phone call. Please refer to the SR10 User's Guide for details.*

### 4.3 Advanced Selective Pairing: A2DP Stereo or Handsfree

Phone Pairing allows the headset to establish two Bluetooth profiles: Hands-Free or A2DP Stereo. Advanced Selective Pairing allows the headset to separate the profiles to enable connection with two devices.

#### 4.3.1 A2DP Stereo Music Only

1. To enter the configuration menu, press and hold the Center Button for 10 seconds until you hear the voice prompt, “**Configuration menu**”.
2. Tap the (+) Button until you hear a voice prompt, “**Media selective pairing**”.
3. Search for Bluetooth devices on your mobile phone. Select the Sena SFR in the list of the devices detected on the mobile phone.
4. If your mobile phone asks for a PIN, enter 0000.

### 4.3.2 HFP for Phone Call Only

1. To enter the configuration menu, press and hold the Center Button for 10 seconds until you hear the voice prompt, “**Configuration menu**”.
2. Tap the (+) Button until you hear a voice prompt, “**Phone selective pairing**”.
3. Search for Bluetooth devices on your mobile phone. Select the Sena SFR in the list of the devices detected on the mobile phone.
4. If your mobile phone asks for a PIN, enter 0000.

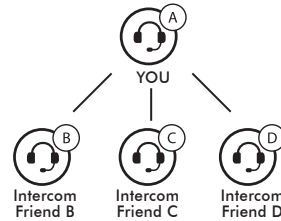
## 4.4 Intercom Pairing

### 4.4.1 Pairing with Other Headsets for Intercom Conversation

The headset can be paired with up to three other headsets for Bluetooth intercom conversation.

1. Press and hold the Center Button of the **headset A and B** for 5 seconds until red LEDs of the both units start to flash rapidly.
2. Simply tap the Center Button of any one of the two **headsets A and B**, and wait until the LEDs of both headsets turn to blue and intercom connection is automatically established.

3. You can make other pairings between **headsets A and C**, and between **headsets A and D** by following the same procedure as above.
4. The intercom pairing queue is ‘**Last-Come, First-Served**’. If a headset has multiple paired headsets for intercom conversations, the last paired headset is set as **first intercom friend**. The previous intercom friend becomes **second intercom friend**, and **third intercom friend**.



## 5 MOBILE PHONE, GPS, SR10

### 5.1 Mobile Phone Call Making and Answering

1. To answer a call, tap the Center Button to answer the call.
2. You can also answer the incoming call by loudly speaking any word of your choice if VOX Phone is enabled, unless you are connected to intercom.
3. To end a call, press and hold the Center Button for 2 seconds until you hear a mid-tone single beep.
4. To reject a call, press and hold the Center Button for 2 seconds until you hear a beep while the phone is ringing.
5. To make a call with voice dialer, press and hold the Center Button for 3 seconds in stand-by mode to activate the voice dialer of your mobile phone.

### 5.2 Speed Dialing

1. Press and hold the (+) Button for 3 seconds and you will hear a mid-tone single beep and a voice prompt, “**Speed dial**”.
2. Tap the (+) Button or the (-) Button to navigate between the menus. You will hear prompts for each menu item.
3. Tap the Center Button to select a voice menu among the followings:  

<b>(1) Last number redial</b>	<b>(4) Speed dial 3</b>
<b>(2) Speed dial 1</b>	<b>(5) Cancel</b>
<b>(3) Speed dial 2</b>	
4. After selecting the last number redial menu, “**Last number redial**”. Then, to redial the last phone call number, tap the Center Button.
5. To call one of the speed dials, tap the (+) Button or the (-) Button to navigate between the menus until you hear a voice prompt, “**Speed dial (#)**”. Then, tap the Center Button.
6. If you want to exit the speed dial immediately, tap the (+) Button or the (-) Button until you hear a voice prompt, “**Cancel**”, and tap the Center Button.



## 5.3 GPS Navigation

### 5.3.1 GPS Pairing

1. Press and hold the Center Button for 10 seconds until you will hear a voice prompt saying “**Configuration menu**”.
2. Triple tap the (+) Button and you will hear the voice prompt saying “**GPS pairing**”.
3. Search for Bluetooth devices on the GPS navigation. Select the Sena SFR in the list of the devices detected on the GPS.
4. Enter 0000 for the PIN.

*Note:*

*When Audio Overlay is enabled, if you pair your GPS device via GPS Pairing, its instructions will not interrupt your intercom conversations, but will overlay with them.*

## 6 STEREO MUSIC

### 6.1 Bluetooth Stereo Music

1. To play or pause music, press and hold the Center Button for 1 second until you hear a double beep.
2. To adjust the volume, tap the (+) Button or the (-) Button.
3. To track forward or track back, press and hold the (+) Button or the (-) Button for 1 second until you hear a beep.

### 6.2 Music Sharing

You can start sharing music with an intercom friend using Bluetooth stereo music during a two-way intercom conversation. When you terminate music sharing, you can go back to the intercom conversation. To start or terminate sharing music, press and hold the Center Button for 1 second during an intercom conversation until you hear a double beep.

*Note:*

1. Both you and your intercom friend can remotely control music playback such as track forward and track back.
2. Music sharing will be paused when you are using your mobile phone or listening to GPS instructions.
3. Music sharing will be terminated if the headset starts a multi-way intercom conference.
4. When Audio Overlay is enabled, if an intercom call is made when you are listening to music, music sharing will not work.

## 7 INTERCOM

### 7.1 Two-way Intercom

#### 7.1.1 Starting Two-way Intercom

You can start an intercom conversation with one of any intercom friends by tapping the Center Button: single tap to intercom with the **first intercom friend**, double tap to intercom with the **second intercom friend**, and triple tap to intercom with the **third intercom friend**.

#### 7.1.2 Ending Two-way Intercom

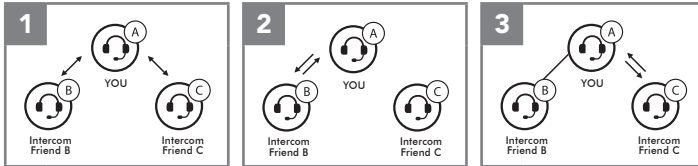
You can end an intercom conversation by using the Center Button. Press and hold the Center Button for 3 seconds to end any intercom. Or, you can single tap to end intercom with the **first intercom friend**, double tap to end intercom with the **second intercom friend**, and triple tap to end intercom with the **third intercom friend**.

## 7.2 Multi-Way Intercom

Multi-Way Intercom enables conference-call-style conversations with up to three intercom friends at the same time. While multi-way intercom is in progress, mobile phone connection is temporarily disconnected. However, as soon as multi-way intercom terminates, the mobile phone connection will be reestablished.

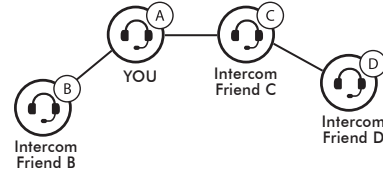
### 7.2.1 Starting Three-way Intercom

1. You (A) need to be paired with two other friends (B & C) for three way conference intercom.
2. Start an intercom conversation with one of the two friends in your intercom group.
3. You (A) can call the second intercom friend (C) by double tapping the Center Button, or the second intercom friend (C) may join the intercom by making an intercom call to you (A).



### 7.2.2 Starting Four-way Intercom

With three intercom friends connected, a new participant (D) can make it a four-way intercom conference by making an intercom call to either (B) or (C).



### 7.2.3 Ending Multi-Way Intercom

You can completely terminate the conference intercom or just disconnect an intercom connection with one of your active intercom friends.

1. Press and hold the Center Button for 3 seconds until you hear a beep to terminate all intercom connections.
2. Tap the Center Button to disconnect from your first intercom friend. Double tap the Center Button to disconnect from your second intercom friend.

*Note:*

*Multiple headsets are connected during multi-way intercom. With various signals interfering each other, the intercom distance of multi-way intercom is relatively shorter than that of two-way intercom.*

## 8 THREE-WAY CONFERENCE PHONE CALL WITH INTERCOM PARTICIPANT

You can have a three-way conference phone call by adding an intercom friend to the mobile phone conversation.

1. During a mobile phone call, tap the Center Button to invite one of your intercom friends to the conversation.
2. To disconnect the intercom during a conference phone call, tap the Center Button.
3. To disconnect the mobile phone call during a conference phone call, press and hold the Center Button for 2 seconds.

## 9 GROUP INTERCOM

Group Intercom allows you to instantly create a multi-way conference intercom with three other most recently paired headsets.

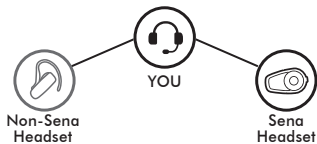
1. Go through intercom pairing with up to three headsets you want to have Group Intercom with.
2. Tap the (+) Button and (-) Button to begin Group Intercom. The LED will flash green.
3. To terminate Group Intercom, press and hold the Center Button for 3 seconds during Group Intercom.

## 10 UNIVERSAL INTERCOM

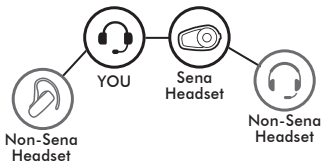
Universal Intercom allows you to have intercom conversations with users of non-Sena Bluetooth headsets. You can pair the headset with only one non-Sena headset at a time. The intercom distance depends on the performance of the Bluetooth headset to which it's connected. When a non-Sena Bluetooth headset is paired with the headset, if another Bluetooth device is paired via Second Mobile Phone Pairing, it will be disconnected.

1. Press and hold the Center Button for 10 seconds to enter the configuration menu. Tap the (+) Button or the (-) Button until you hear a voice prompt, **“Universal intercom pairing”**. Tap the Center Button to enter into Universal Intercom Pairing mode and you will hear multiple beeps.
2. Put the non-Sena Bluetooth headset in Pairing Mode. The headset will automatically pair with a non-Sena Bluetooth headset.

3. You can have a two-way intercom or multi-way intercom communication with up to three intercom friends using non-Sena headset.



**Three-way Universal Intercom**



**Four-way Universal Intercom**

## 11 FM RADIO

### 11.1 FM Radio On/Off

To turn on or off the FM radio, press and hold the (-) Button for 1 second until you hear a mid-toned double beep sound.

### 11.2 Preset Stations

You can listen to preset stations while listening to the FM radio. Press and hold the Center Button for 1 second to go upward to your next saved preset station.

### 11.3 Seek and Save

1. Double tap the (+) Button or the (-) Button to search up or down the station dial.
2. To save the current station, press and hold the Center Button for 3 seconds until you hear a voice prompt, **“Preset (#)”**.
3. Tap the (+) Button or the (-) Button, in order to select which preset number you want for that specific station. (You can save up to 10 preset stations.)

4. To save the current station, press and hold the (+) Button for 1 second. You will then hear a voice prompt, **“Save preset (#)”**.
5. To delete the saved station in the preset number, press and hold the (-) Button for 1 second. You will then hear a voice prompt, **“Delete preset (#)”**.

### 11.4 Scan and Save

1. Press and hold the (+) Button for 1 second.
2. The Sena tuner pauses at each station it finds for 8 seconds before moving to the next.
3. To save a station while scanning frequencies, tap the Center Button at that station. You will hear a voice prompt, **“Save preset (#)”**. The station will be saved as the next preset number.

### 11.5 Temporary Preset

The Temporary Station Preset feature automatically finds and saves the nearest 10 radio stations without changing your existing preset stations.

1. Tap the (+) Button 3 times to automatically scan for 10 temporary preset stations.
2. The temporary preset stations will be cleared when the headset is powered off.

### 11.6 FM Sharing

You can listen to the radio during the intercom conversation. To start FM sharing, press and hold the (-) Button for 1 second during the intercom conversation. During FM sharing, you can move to the next preset station and you or your friend on the intercom can change frequencies. If either person changes the frequency, the other will listen to the same frequency. To terminate FM sharing, press and hold the (-) Button for 1 second or end the intercom call.

#### *Note:*

1. *FM sharing will be terminated if the headset starts a multi-way intercom conference.*
2. *When Audio Overlay is enabled, if an intercom call is made while you are listening to the FM radio, FM sharing will not work.*

## 11.7 Region Selection

You can select the proper FM frequency region from the Sena Device Manager. With the region setting, you may optimize the seek function to avoid unnecessary frequency ranges.

Region	Frequency Range	Step
Worldwide	76.0 ~ 108.0 MHz	± 100 kHz
Americas	87.5 ~ 107.9 MHz	± 200 kHz
Asia	87.5 ~ 108.0 MHz	± 100 kHz
Australia	87.5 ~ 107.9 MHz	± 200 kHz
Europe	87.5 ~ 108.0 MHz	± 100 kHz
Japan	76.0 ~ 95.0 MHz	± 100 kHz

## 12 FUNCTION PRIORITY

The headset operates in the following order of priority:

**(highest)**

Mobile phone

Intercom/FM sharing

Music sharing by Bluetooth stereo music

Bluetooth stereo music

**(lowest)**

FM radio

A lower priority function is always interrupted by a higher priority function.

*Note:*

*If you select music as the audio source priority, the order of priority will change as below:*

**(highest)**

Mobile phone

Bluetooth stereo music

Intercom/FM sharing

Music sharing by Bluetooth stereo music

**(lowest)**

FM radio



## 13 CONFIGURATION SETTING

### 13.1 Headset Configuration Setting

1. To enter configuration menu, press and hold the Center Button for 10 seconds until you will also hear a voice prompt, “**Configuration menu**”.
2. Tap the (+) Button or the (-) Button to navigate between the menus. You will hear voice prompts for each menu item.
3. You can execute the command by tapping the Center Button.

Configuration Menu	Tap Center Button
Phone Pairing	None
Second Mobile Phone Pairing	None
GPS Pairing	None
Phone Selective Pairing	None
Media Selective Pairing	None

Configuration Menu	Tap Center Button
Delete All Pairings	Execute
Remote Control Pairing	Execute
Universal Intercom Pairing	Execute
Factory Reset	Execute
Exit Configuration	Execute

#### 13.1.1 Remote Control Pairing

You can remotely control the headset using Sena Remote Control devices (sold separately).

1. Turn on the headset and the Remote Control device.
2. Execute Remote Control Pairing.
3. Enter pairing mode in the Remote Control device. The headset will automatically connect with the Remote Control device in pairing mode.

## 13.2 Software Configuration Setting

You can change the settings of the headset through the Sena Device Manager or the Sena Smartphone App.

### 13.2.1 Speed Dial

Assign phone numbers for speed dialing to make a phone call quickly.

### 13.2.2 Audio Source Priority (Default: Intercom)

Audio Source Priority allows you to select the priority between the intercom and music (which includes GPS app instructions and message notifications) from a smartphone. If the intercom is selected as the audio source priority, your music will be interrupted during an intercom conversation. If music is selected as the audio source priority, intercom conversations will be interrupted while your music is heard.

*Note:*

*Audio Source Priority is active only when Audio Overlay is disabled.*

### 13.2.3 Audio Boost (Default: Disable)

Enabling Audio Boost increases the overall maximum volume. Disabling Audio Boost reduces the overall maximum volume, but delivers more balanced sound.

### 13.2.4 Smart Volume Control (Default: Disable)

Smart Volume Control automatically changes the level of the speaker volume based on the level of the environmental noise. When it is disabled, volume is controlled manually. You can enable the level adjustment by setting the sensitivity to low, medium, or high. Smart Volume Control responds to smaller environmental noises as the sensitivity level becomes higher.

### 13.2.5 VOX Phone (Default: Enable)

If this feature is enabled, you can answer incoming calls by voice. When you hear a ringtone for an incoming call, you can answer the phone by saying a word such as “**Hello**” loudly or by blowing air into the microphone. VOX phone is temporarily disabled if you are connected to intercom. If this feature is disabled, you have to tap the Center Button to answer an incoming call.

### 13.2.6 VOX Intercom (Default: Disable)

If this feature is enabled, you can initiate an intercom conversation with the last connected intercom friend by voice. When you want to start intercom, say a word such as **“Hello”** loudly or blow air into the microphone. If you start an intercom conversation by voice, the intercom terminates automatically when you and your intercom friend remain silent for 20 seconds. However, if you manually start an intercom conversation by tapping the Center Button, you have to terminate the intercom conversation manually.

However, if you start intercom by voice and end it manually by tapping the Center Button, you will not be able to start intercom by voice temporarily. In this case, you have to tap the Center Button to restart the intercom. This is to prevent repeated unintentional intercom connections by strong wind noise. After rebooting the headset, you can start intercom by voice again.

### 13.2.7 HD Voice (Default: Disable)

HD Voice allows you to communicate in high-definition during phone calls. This feature increases the quality so that the audio will be crisp and clear during phone call conversations. If this feature is enabled, incoming phone calls will interrupt intercom conversations and audio from the SR10 will not be heard during intercom conversations. Three-Way Conference Phone Call with Intercom Participant will not be available if HD Voice is enabled.

*Note:*

*Refer to the manufacturer of your Bluetooth device that will be connected to the headset to see if it supports HD Voice.*

### 13.2.8 HD Intercom (Default: Enable)

HD Intercom enhances the two-way intercom audio from normal quality to HD quality. HD Intercom will become temporarily disabled when you enter into a multi-way intercom. If this feature is disabled, the two-way intercom audio will change to normal quality.

*Note:*

- 1. The intercom distance of HD Intercom is relatively shorter than that of normal intercom.*
- 2. HD intercom is active only when Audio Overlay is disabled.*

### 13.2.9 Intercom VOX Sensitivity (Default: 3)

VOX sensitivity can be adjusted depending on your riding environment. Level 5 is the highest sensitivity setting and 1 is the lowest.

### 13.2.10 Voice Prompts (Default: Enable)

You can disable voice prompts by software configuration settings, but the following voice prompts are always on.

- Headset configuration settings menu, battery level indicator, speed dial, FM radio functions

### 13.2.11 RDS AF Setting (Default: Disable)

**Radio Data System (RDS) Alternative Frequency (AF)** Setting allows a receiver to re-tune to the second frequency location when the first signal becomes too weak. With RDS AF enabled on the receiver, a radio station with more than one frequency can be used.

### 13.2.12 FM Station Guide (Default: Enable)

When FM Station Guide is enabled, FM station frequencies are given by voice prompts as you select preset stations. When FM Station Guide is disabled, the voice prompts on FM station frequencies will not be given as you select preset stations.

### 13.2.13 Sidetone (Default: Disable)

Sidetone is audible feedback of your own voice. It helps you to naturally speak at the correct level according to varying helmet noise conditions. If this feature is enabled, you can hear what you are speaking during an intercom conversation or a phone call.

### 13.2.14 Advanced Noise Control™ (Default: Enable)

When Advanced Noise Control is enabled, the background noise is reduced during an intercom conversation. When it is disabled, the background noise is mixed with your voice during intercom.

### 13.2.15 Audio Overlay™ (Default: Disable)

Audio Overlay allows you to hear the audio from two features simultaneously. When Audio Overlay is enabled, phone calls, GPS instructions and intercom conversations can be overlaid with audio from the FM radio, music or GPS app instructions from a smartphone in the background with reduced volume. Increasing or decreasing the volume of the audio in the foreground will also increase or decrease the volume of the overlaid audio in the background. The volume of the foreground audio can be adjusted using the headset. How much background audio that is heard can be adjusted using the Sena Smartphone App. HD Intercom and Audio Source Priority become disabled temporarily when Audio Overlay is enabled.

Model	Foreground*			Background**	
	Phone	GPS	Intercom	FM Radio	Music or Smart Navi
SFR	○ <sup>A</sup>	○ <sup>A</sup>			
		○	○		
			○ <sup>B</sup>	○	○ <sup>B</sup>
		○ <sup>C</sup>		○ <sup>C</sup>	○

Foreground and Background Combination Table

- \* Two audio sources in the foreground can be heard simultaneously with the same volume level.
- \*\* Only one background source can be heard at a time while listening to an audio source in the foreground.
- A. GPS instructions can be heard during phone calls and the volume level of both audio sources can be adjusted using the headset.
- B. GPS app directions will be heard in the background during intercom conversations.
- C. The FM radio will be heard in the background when GPS instructions are heard.

*Note:*

1. Audio Overlay will be activated during two-way intercom conversations with a headset that also supports this feature.
2. When Audio Overlay is disabled, the background audio source will return to its independent volume level.
3. Audio Overlay has limited usage for iOS devices.
4. For Audio Overlay to work properly, you need to power the headset off and on. Please restart the headset.
5. Some GPS devices may not support this feature.

## 14 FIRMWARE UPGRADE

The headset supports firmware upgrades. You can update the firmware using the Sena Device Manager. Please visit Sena Bluetooth website at [www.sena.com](http://www.sena.com) to check the latest software downloads.

## 15 TROUBLESHOOTING

### 15.1 Factory Reset

If you want to restore the headset to factory default settings, use the Factory Reset in the configuration menu. The headset automatically restores the default settings and turns off.

