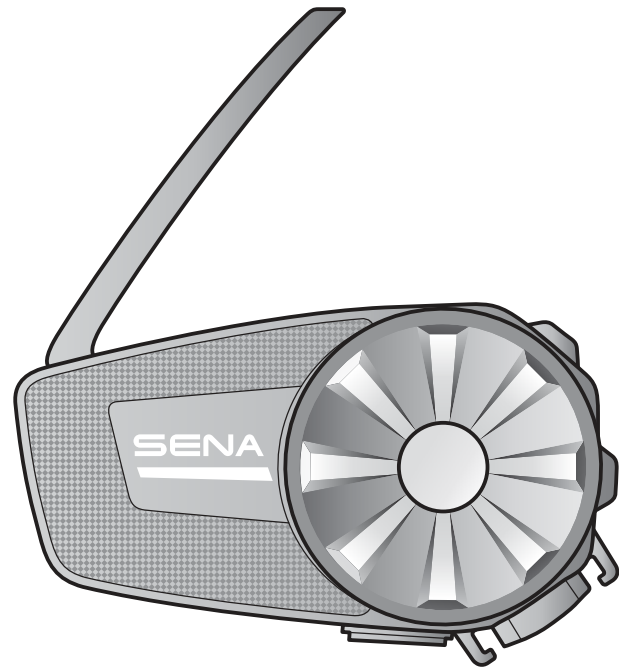


SENA



SPIDER ST1

MOTORCYCLE MESH COMMUNICATION SYSTEM

HD SPEAKERS

USER'S GUIDE

TABLE OF CONTENTS

1.	ABOUT THE SPIDER ST1	5
1.1	Product Features	5
1.2	Product Details	6
1.3	Package Contents	7
2.	INSTALLING THE HEADSET ON YOUR HELMET	8
2.1	Helmet Installation	8
2.1.1	Using the Clamp Unit	8
2.1.2	Using the Glued Surface Mounting Plate	8
2.2	Installing the Speakers	9
2.3	Installing the Microphone	10
2.3.1	Installing the Wired Boom Microphone	10
2.3.2	Installing the Wired Microphone	12
3.	GETTING STARTED	14
3.1	Downloadable Sena Software	14
3.1.1	SENA MOTORCYCLES App	14
3.1.2	Sena Device Manager	14
3.1.3	Firmware Upgrades	14
3.2	Charging	15
3.3	Legend	15
3.4	Powering On and Off	16
3.5	Volume Adjustment	16
3.6	Checking the Battery Level	16
4.	PAIRING THE HEADSET WITH OTHER BLUETOOTH DEVICES	17
4.1	Phone Pairing	17
4.1.1	Initially Pairing the SPIDER ST1	17
4.1.2	Pairing When the SPIDER ST1 is Turned Off	18
4.1.3	Pairing When the SPIDER ST1 is Turned On	18

4.2	Second Mobile Phone Pairing - Second Mobile Phone and GPS	19
4.3	GPS Pairing	19
5.	MOBILE PHONE USAGE	20
5.1	Making and Answering Calls	20
5.2	Speed Dialing	20
5.2.1	Assigning Speed Dial Presets	20
5.2.2	Using Speed Dial Presets	20
5.3	HD Voice (Always On)	21
6.	STEREO MUSIC	22
6.1	Playing Music with Bluetooth Devices	22
7.	MESH INTERCOM	23
7.1	What is Mesh Intercom?	23
7.1.1	Open Mesh	24
7.1.2	Group Mesh	24
7.2	Starting Mesh Intercom	25
7.3	Using the Mesh in Open Mesh	25
7.3.1	Channel Setting (Default: channel 1)	25
7.4	Using Mesh in Group Mesh	26
7.4.1	Creating a Group Mesh	26
7.4.2	Joining an Existing Group Mesh	27
7.5	Enable/Disable Mic (Default: Enable)	28
7.6	Toggling Open Mesh/Group Mesh	28
7.7	Reset Mesh	28
8.	MESH AUDIO MULTITASKING (ALWAYS ON)	29

9. FUNCTION PRIORITY	30
<hr/>	
10. CONFIGURATION SETTING	31
<hr/>	
10.1 Headset Configuration Menu	31
10.2 Software Configuration Setting	31
10.2.1 Headset Language	32
10.2.2 Audio Equalizer (Default: Off)	32
10.2.3 VOX Phone (Default: Enable)	32
10.2.4 VOX Sensitivity (Default: 3)	32
10.2.5 Intercom-Audio Overlay Sensitivity (Default: 3)	32
10.2.6 Audio Overlay Volume Management (Default: Disable)	33
10.2.7 Voice Prompt (Default: Enable)	33
11. TROUBLESHOOTING	34
<hr/>	
11.1 Fault Reset	34
11.2 Factory Reset	34

1. ABOUT THE SPIDER ST1

1.1 Product Features



Bluetooth® 5.2



Mesh Intercom up to 2 km (1.2 mi)*



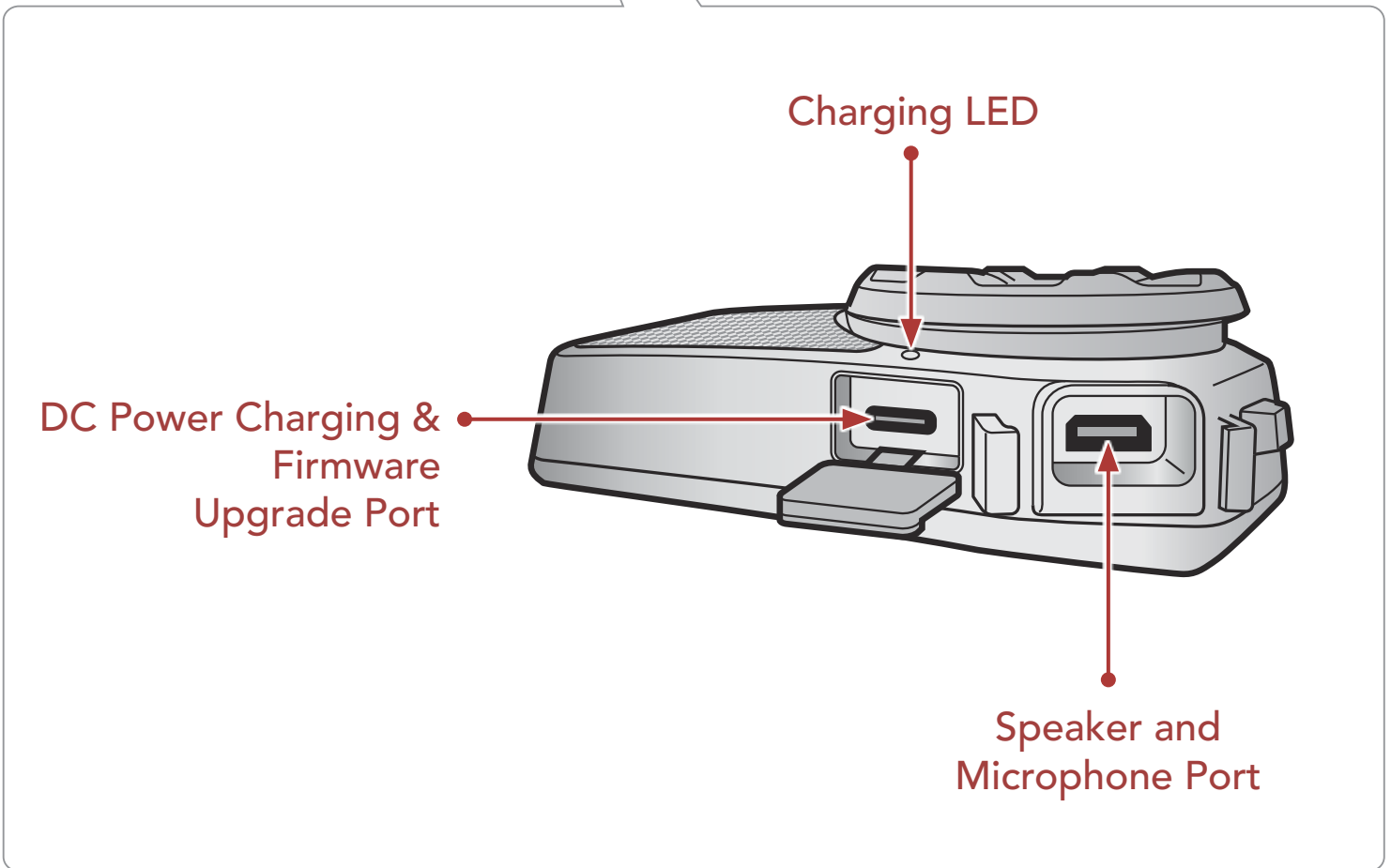
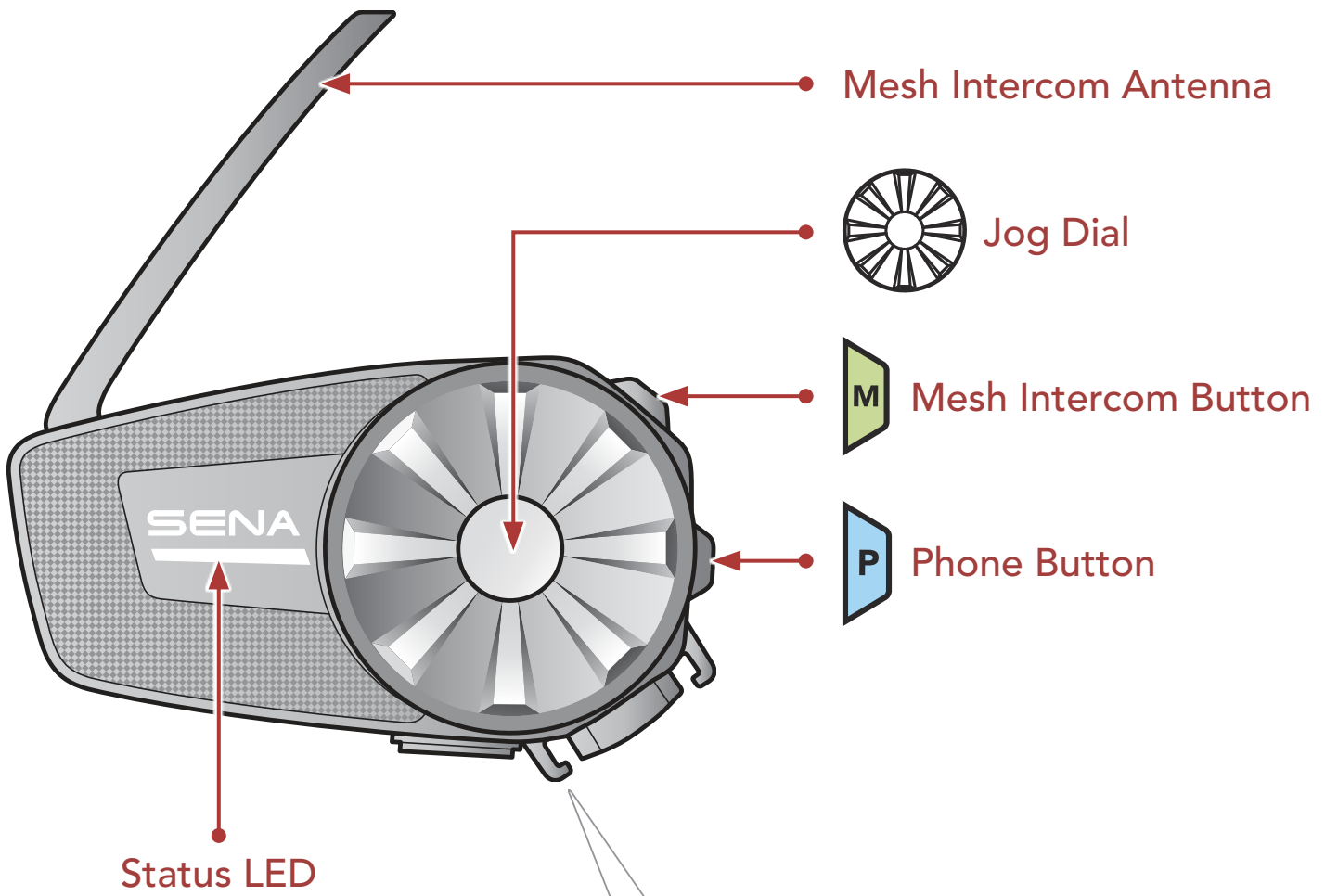
Audio Multitasking™



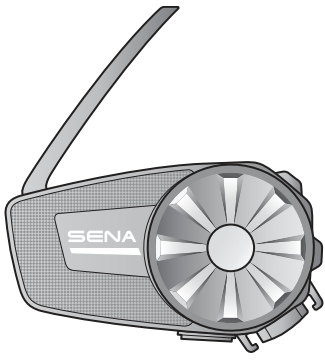
Fast Charging

* in open terrain

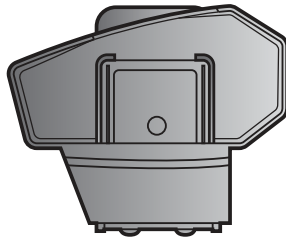
1.2 Product Details



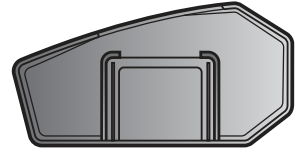
1.3 Package Contents



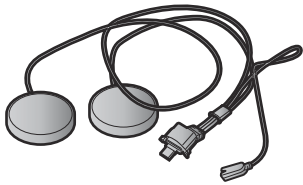
Headset Main Unit



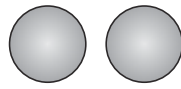
Clamp Unit



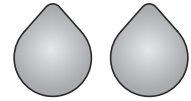
Glued Surface Mounting Plate



Speakers



Speaker Pads



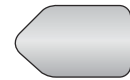
Hook and Loop Fasteners for Speakers



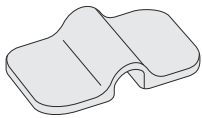
Wired Boom Microphone



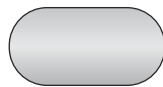
Microphone Sponges



Hook and Loop Fastener for Boom Microphone



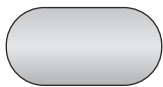
Boom Microphone Holder



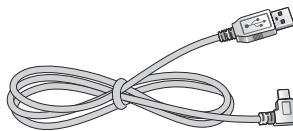
Hook and Loop Fastener for Holder



Wired Microphone



Hook and Loop Fastener for Wired Microphone



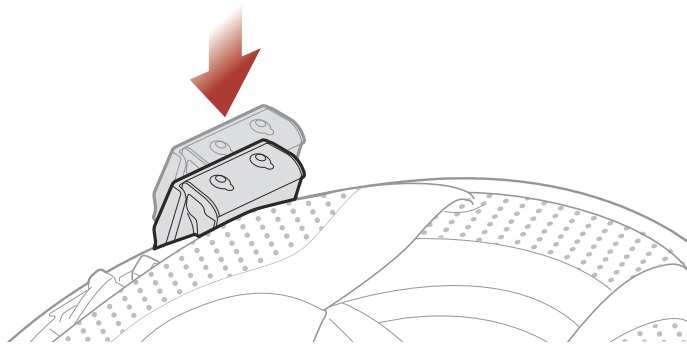
USB Power & Data Cable (USB-C)

2. INSTALLING THE HEADSET ON YOUR HELMET

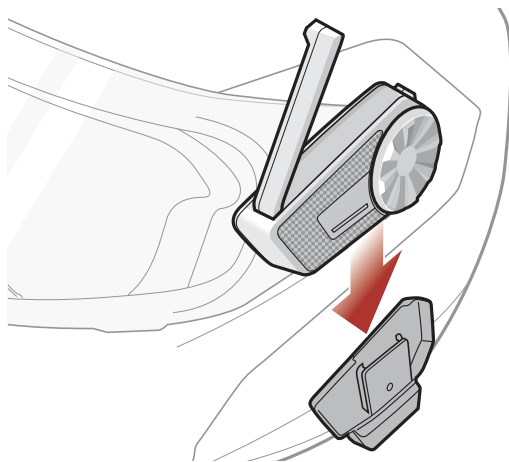
2.1 Helmet Installation

2.1.1 Using the Clamp Unit

1. Insert the back plate of the clamp unit between the internal padding and external shell of the left side of the helmet.



2. Attach the main unit to the clamp unit until you hear a click.

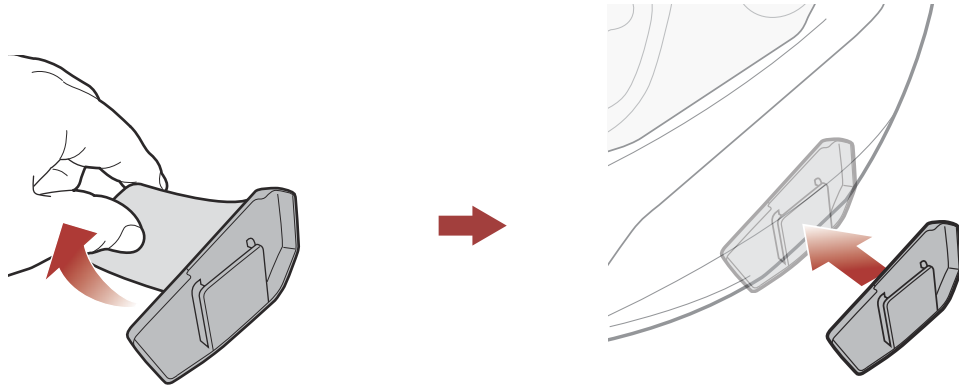


2.1.2 Using the Glued Surface Mounting Plate

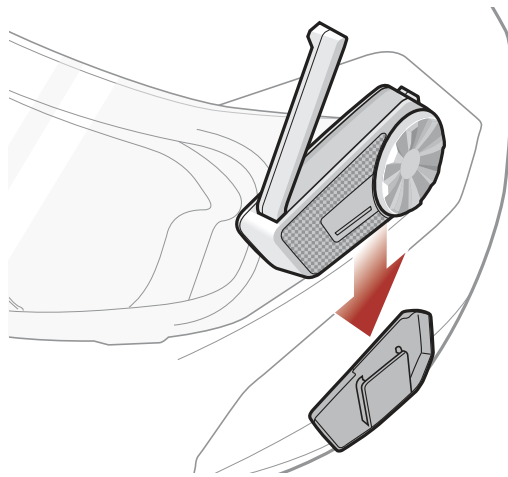
If you cannot install the clamp unit on the helmet, you can use the glued surface mounting plate to attach the clamp unit to the surface of the helmet.

1. Clean the area on the left side of the helmet where you will attach the glued surface mounting plate with a moistened towel and dry thoroughly.

2. Peel off the cover of the adhesive tape of the glued surface mounting plate and attach it to the helmet.

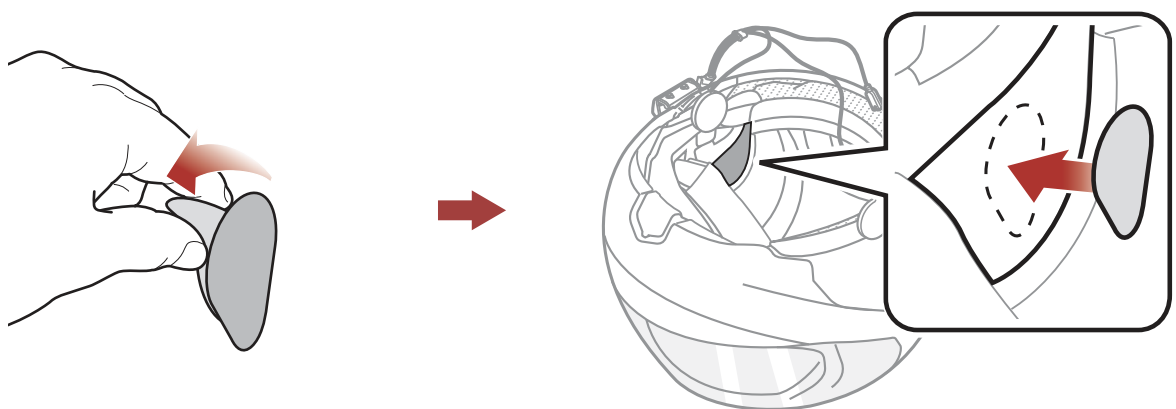


3. Make sure that the glued surface mounting plate sticks on the helmet firmly. Maximum adhesion occurs after 24 hours.
4. Attach the main unit to the glued surface mounting plate until you hear a click.

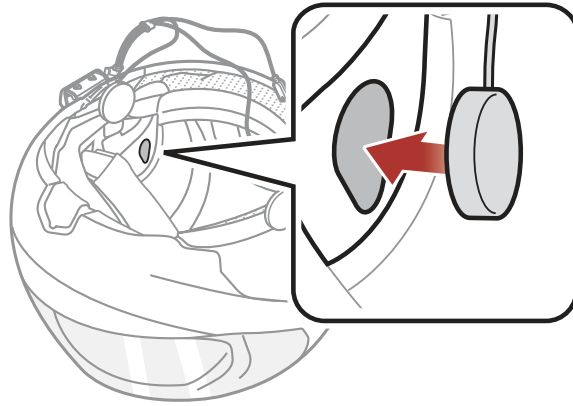


2.2 Installing the Speakers

1. Peel off each cover of the hook and loop fasteners for speakers to expose the adhesive surface. Then, attach the fasteners to the ear pockets inside the helmet.



2. Attach the speakers to the hook and loop fasteners for speakers inside the helmet.

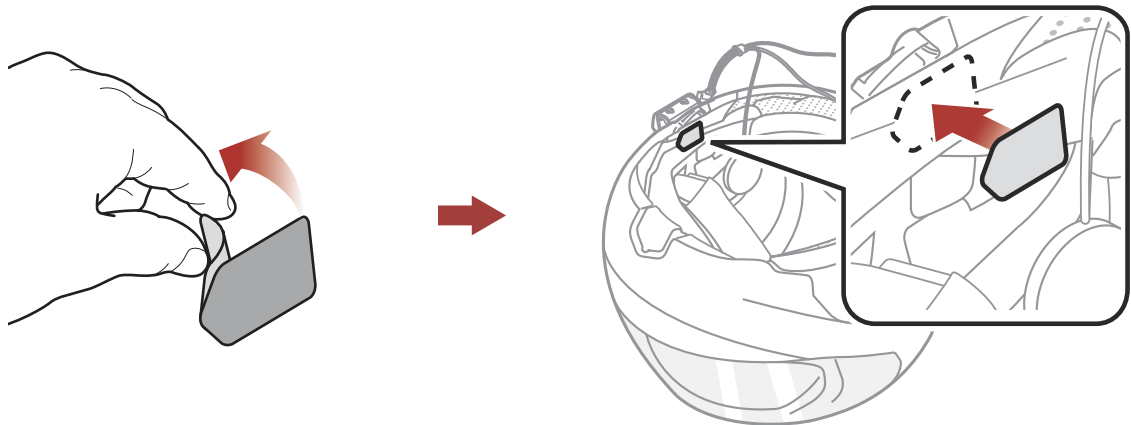


Note: If the helmet has deep ear pockets, you can use the speaker pads to bring the speakers closer to your ears.

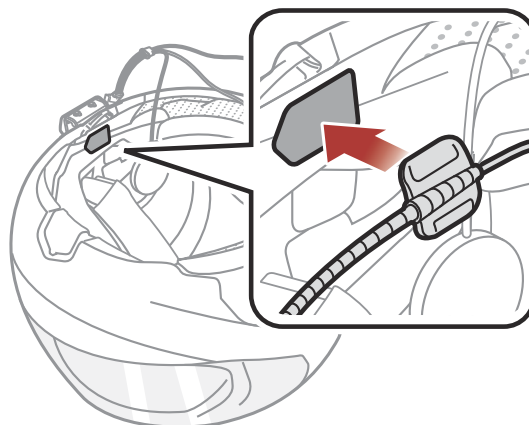
2.3 Installing the Microphone

2.3.1 Installing the Wired Boom Microphone

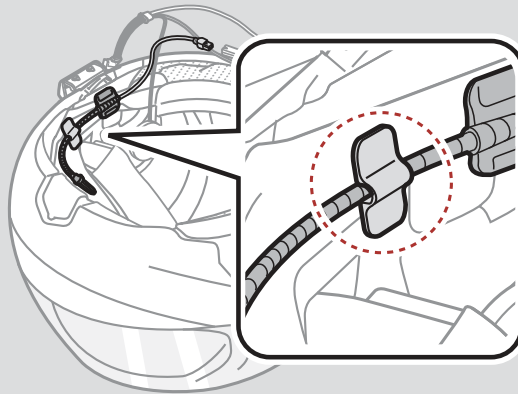
1. Peel off the cover of the hook and loop fastener for wired boom microphone to expose the adhesive tape. Then, attach the hook and loop fastener on the inside surface of the left external shell.



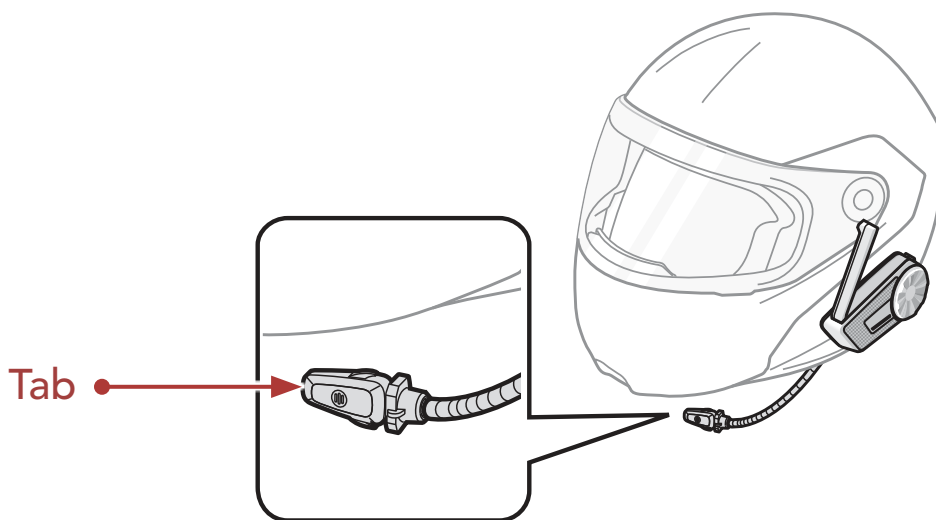
2. Attach the wired boom microphone's mounting plate to the hook and loop fastener.



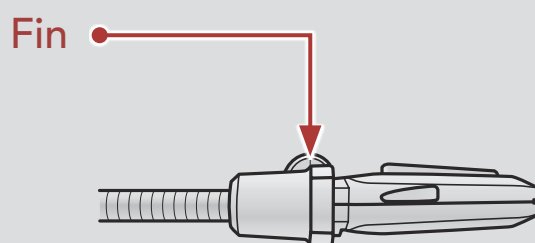
Note: You can use the boom microphone holder after attaching the hook and loop fastener for boom microphone holder on it to ensure secure installation.



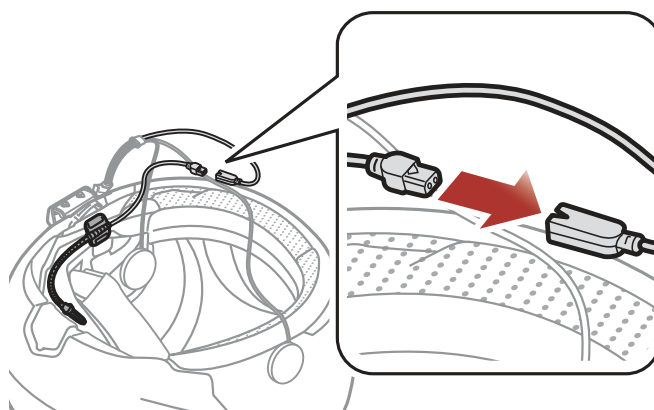
3. Adjust the head of the microphone so that the tab is facing away from your mouth.



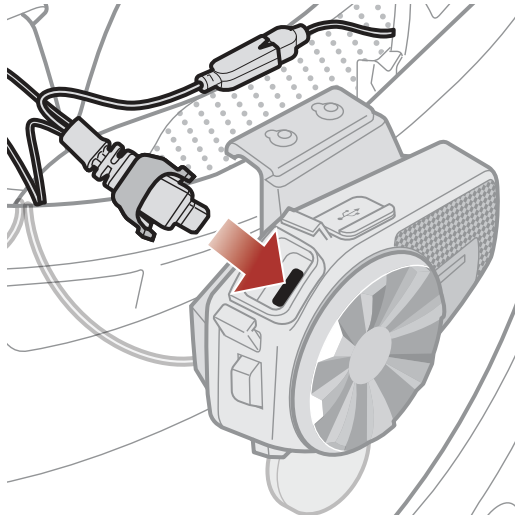
Note: Make sure that the microphone is located properly close to your mouth when you wear the helmet. Adjust the direction of the microphone so that the fin side of the microphone is facing outward, away from your lips.



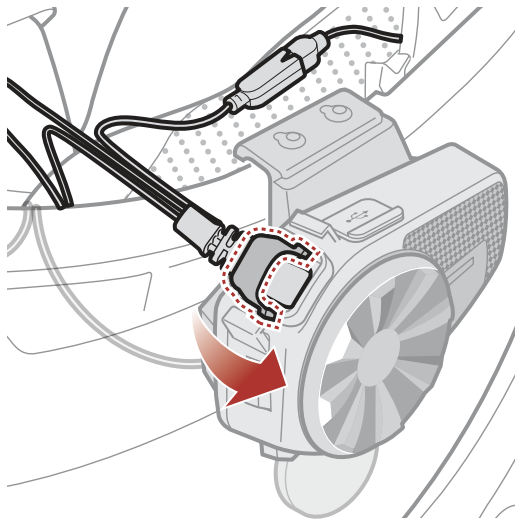
4. Align the arrows on the microphone and speaker cables and insert the microphone cable into the microphone connector.



5. Insert the speaker cable into the speaker and microphone port to connect it to the main unit.



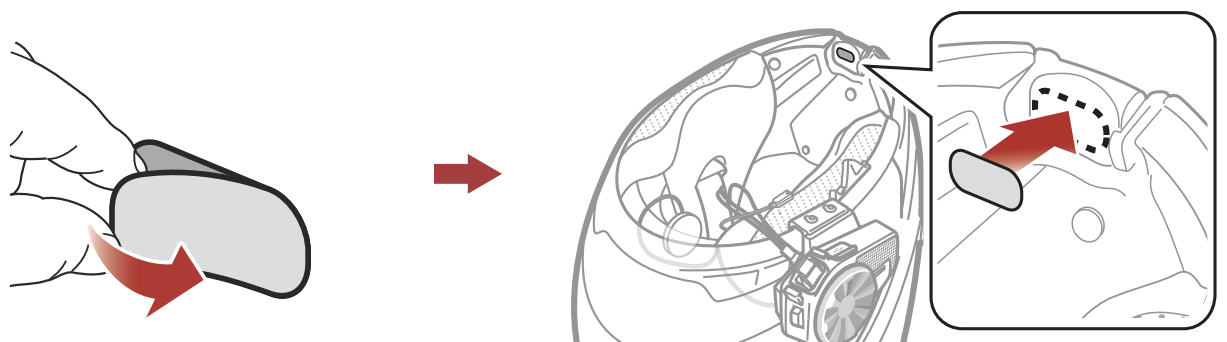
6. Close the cover of the speaker cable to lock the cable to the port.



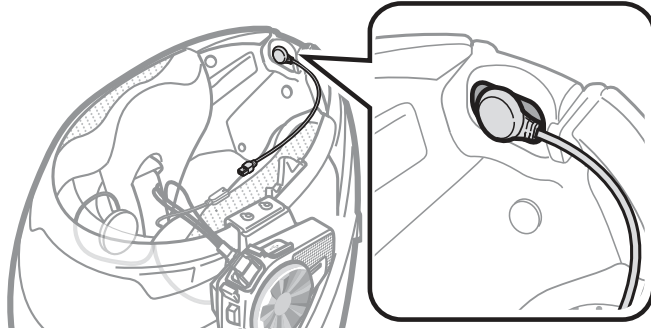
2.3.2 Installing the Wired Microphone

If you have a full face helmet, you can use the wired microphone.

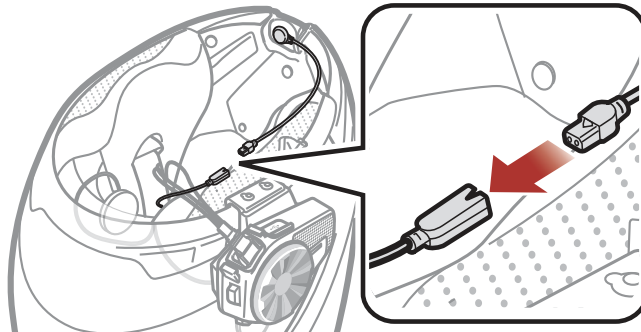
1. Peel off the cover of the hook and loop fastener for wired microphone to expose the adhesive tape. Then, attach the hook and loop fastener on the inside of the helmet's chin guard.



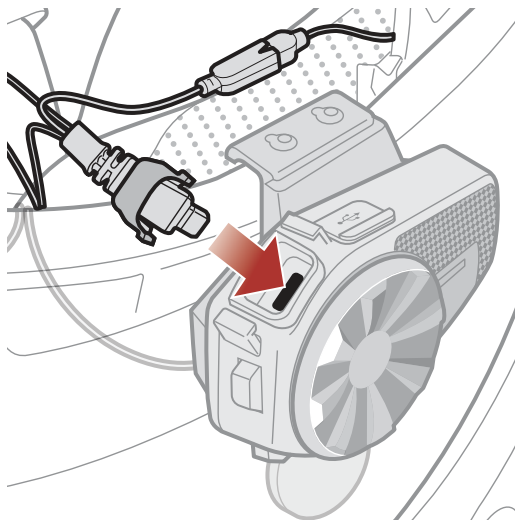
2. Attach the wired microphone to the hook and loop fastener for wired microphone.



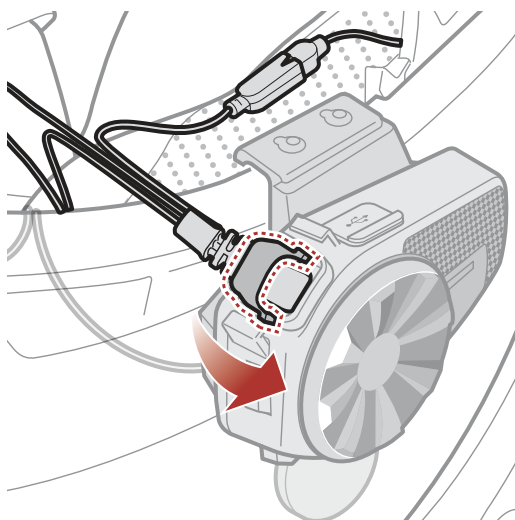
3. Align the arrows on the microphone and speaker cables and insert the microphone cable into the microphone connector.



4. Insert the speaker cable into the speaker and microphone port to connect it to the main unit.



5. Close the cover of the speaker cable to lock the cable to the port.



3. GETTING STARTED

3.1 Downloadable Sena Software

3.1.1 SENA MOTORCYCLES App

By simply pairing your phone with your headset, you can use the **SENA MOTORCYCLES App** for quicker, easier set up and management.



- Download the **SENA MOTORCYCLES App** on **Google Play Store** or **App Store**.

3.1.2 Sena Device Manager

The **Sena Device Manager** allows you to upgrade firmware and configure settings directly from your PC.



- Download the **Sena Device Manager** at sena.com.

3.1.3 Firmware Upgrades

The headset supports firmware upgrades.

Please visit sena.com to check for the latest software downloads.

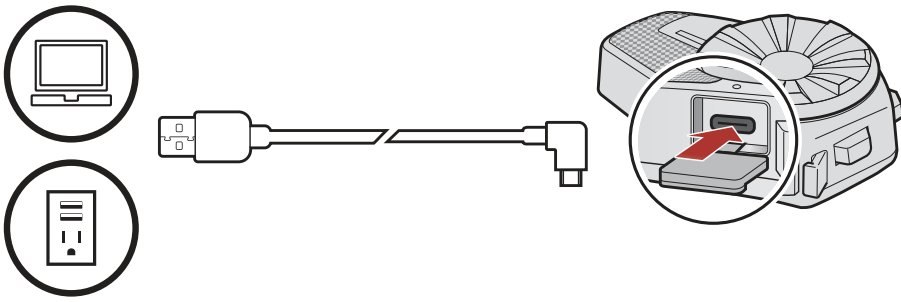
- Download the **firmware** at sena.com.

NOTICE

- This **User Guide (Version 2.0)** explains how to operate the SPIDER ST1 with **firmware version 2.0 or higher**.
- For the operation of the SPIDER ST1 with a **firmware version lower than 2.0**, refer to the **SPIDER ST1 User Guide (Version 1.1.0) or lower**.

3.2 Charging

Charging the Headset



Depending upon the charging method, the headset will be fully charged in about 2.5 hours.

Note:

- The headset includes a **Fast Charging** feature which allows it to charge quickly over a short period of time. For example, a user can get up to 2.0 hours of Mesh communication after charging the headset for 20 minutes.
- Any 3rd party USB charger can be used with Sena products if the charger is approved by either the FCC, CE, IC, or other locally approved agencies.
- Use of a non-approved charger may cause fire, explosion, leakage, and other hazards which may also reduce the life time or performance of the battery.
- The **SPIDER ST1** is compatible with 5 V input USB-charged devices only.

3.3 Legend



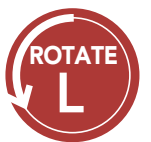
Tap button/Jog Dial the specified number of times



Press and Hold button/Jog Dial for the specified amount of time



Rotate Jog Dial clockwise (right) or counterclockwise (left).



Rotate while Pressing Jog Dial clockwise (right) or counterclockwise (left).

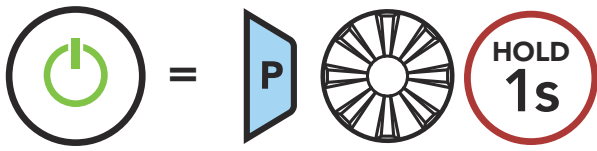


"Hello"

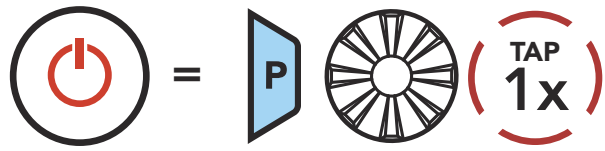
Audible prompt

3.4 Powering On and Off

Powering On



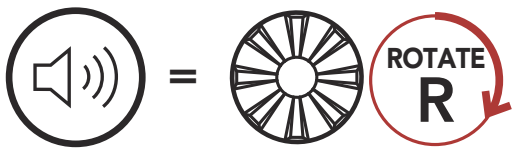
Powering Off



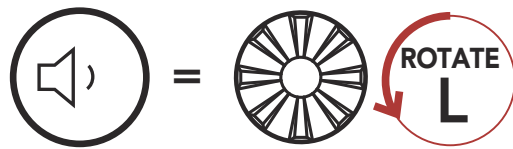
3.5 Volume Adjustment

You can raise or lower the volume by rotating the **Jog Dial** clockwise or counterclockwise. Volume is set and maintained independently at different levels for each audio source (i.e., phone, intercom), even when the headset is rebooted.

Volume Up



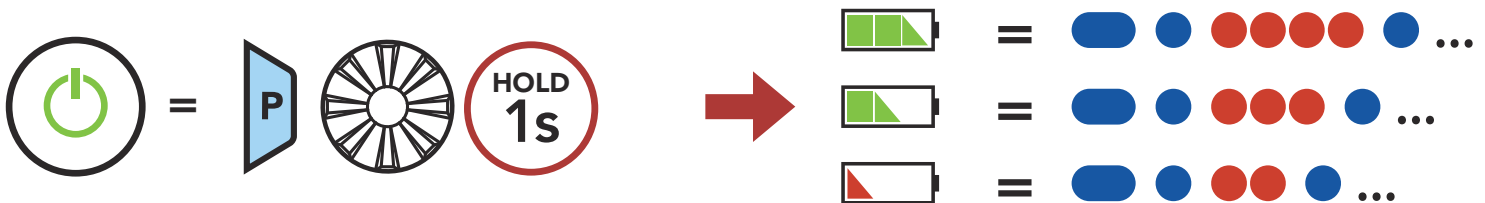
Volume Down



3.6 Checking the Battery Level

Instructions are for when powering the headset on.

Powering On



Note: When the battery is low while in use, you will hear a voice prompt saying **“Low battery”**.

4. PAIRING THE HEADSET WITH OTHER BLUETOOTH DEVICES

When using the headset with other Bluetooth devices for the first time, they will need to be “paired.” This enables them to recognize and communicate with one another whenever they are within range.

The headset can pair with multiple Bluetooth devices such as a mobile phone, GPS, or MP3 player via **Mobile Phone Pairing, Second Mobile Phone Pairing and GPS Pairing.**



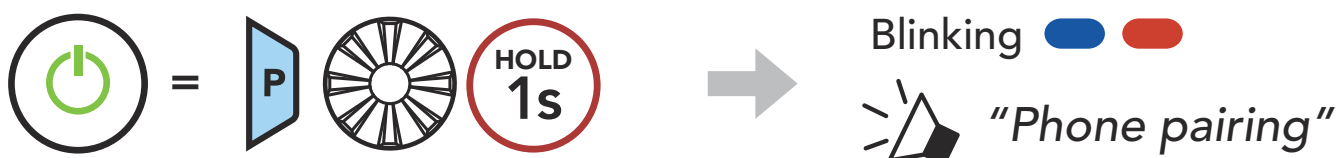
4.1 Phone Pairing

There are three ways to pair the phone.

4.1.1 Initially Pairing the SPIDER ST1

The headset will automatically enter the phone pairing mode when you initially turn on the headset or in the following situation:

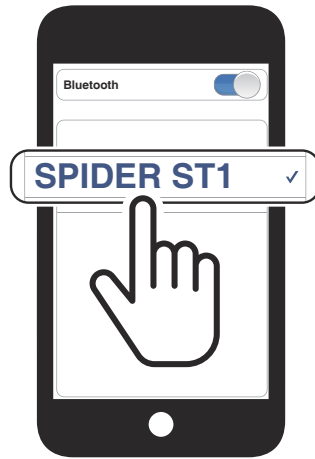
- Rebooting after executing **Factory Reset.**
1. Press and hold the **Phone Button** and the **Jog Dial** for **1 second.**



Note:

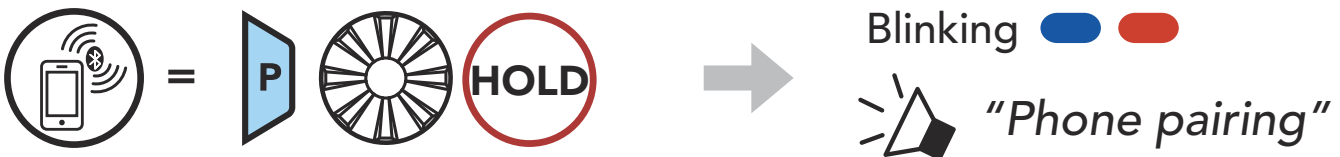
- The phone pairing mode lasts for **3 minutes.**
- To cancel phone pairing, tap the **Phone Button** or **Jog Dial.**

2. Select **SPIDER ST1** in the list of Bluetooth devices detected. If your mobile phone asks for a PIN, enter 0000.

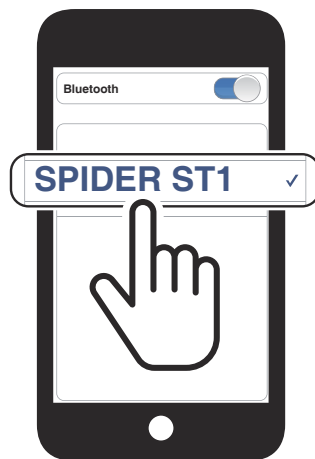


4.1.2 Pairing When the SPIDER ST1 is Turned Off

1. While the headset is off, press and hold the **Phone Button** and the **Jog Dial** until the LED flashes red and blue alternately and you hear a voice prompt, **"Phone pairing"**.



2. Select **SPIDER ST1** in the list of Bluetooth devices detected. If your mobile phone asks for a PIN, enter 0000.

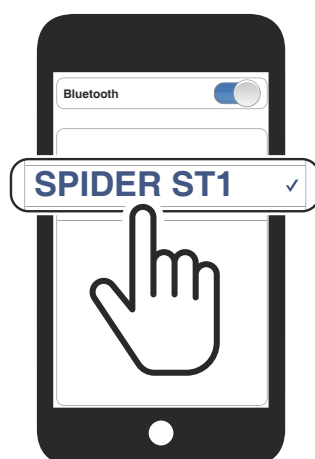


4.1.3 Pairing When the SPIDER ST1 is Turned On

1. While the headset is on, press and hold the **Phone Button** for **5 seconds**.



2. Select **SPIDER ST1** in the list of Bluetooth devices detected. If your mobile phone asks for a PIN, enter 0000.



4.2 Second Mobile Phone Pairing - Second Mobile Phone and GPS

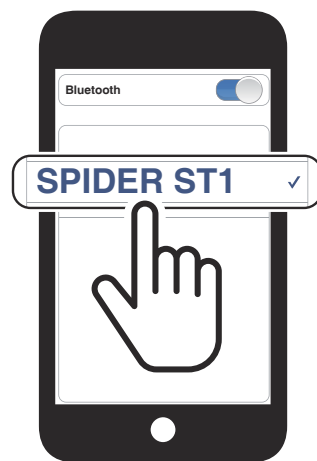
1. Press and hold the **Jog Dial** for **5 seconds**.



2. Rotate the **Jog Dial** clockwise until you hear a voice prompt, "Second mobile phone pairing".

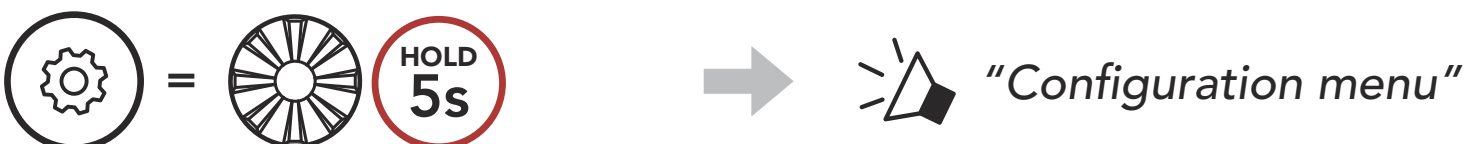


3. Select **SPIDER ST1** in the list of Bluetooth devices detected. If your Bluetooth device asks for a PIN, enter 0000.



4.3 GPS Pairing

1. Press and hold the **Jog Dial** for **5 seconds**.



2. Rotate the **Jog Dial** clockwise until you hear a voice prompt, "GPS Pairing".



3. Select **SPIDER ST1** in the list of devices detected. If your Bluetooth device asks for a PIN, enter 0000.

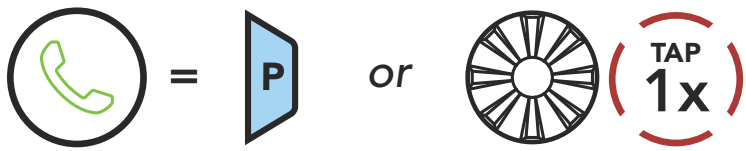


Note: If you pair your GPS device via GPS Pairing, its instruction will interrupt your Mesh Intercom conversations.

5. MOBILE PHONE USAGE

5.1 Making and Answering Calls

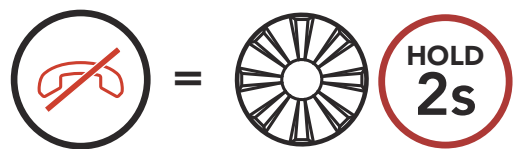
Answer a Call



End a Call



Reject a Call



Make a Call with Voice Dialer



Note: If you have a GPS device connected, you will not hear its voice navigations during a phone call.

5.2 Speed Dialing

5.2.1 Assigning Speed Dial Presets

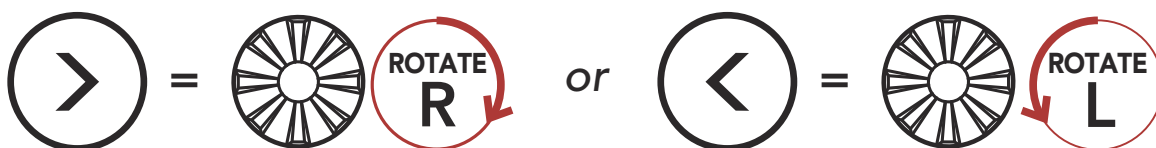
Speed Dial Presets could be assigned through the **Sena Device Manager** or the **SENA MOTORCYCLES App**.

5.2.2 Using Speed Dial Presets

1. Enter into the **Speed Dial** menu.



2. Navigate forward or backward through **Speed Dial Preset** numbers.

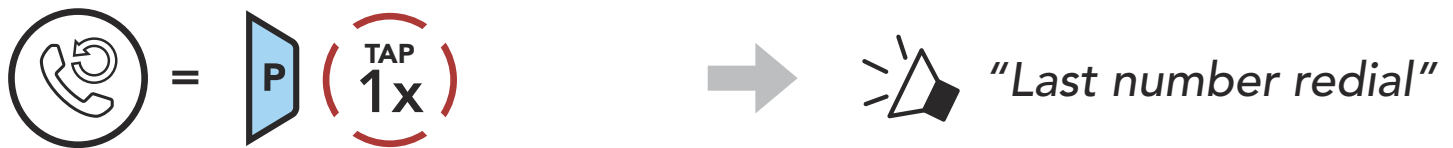


3. Call one of your **Speed Dial Presets** numbers.



4. Redial the last number called.

Redial Last Number



5.3 HD Voice (Always On)

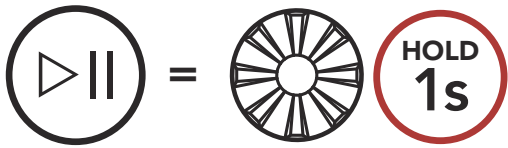
HD Voice allows you to communicate in high-definition during phone calls. This feature increases the quality so that the audio will be crisp and clear during phone call conversations.

Note: Refer to the manufacturer of your Bluetooth device that will be connected to the headset to see if it supports **HD Voice**.

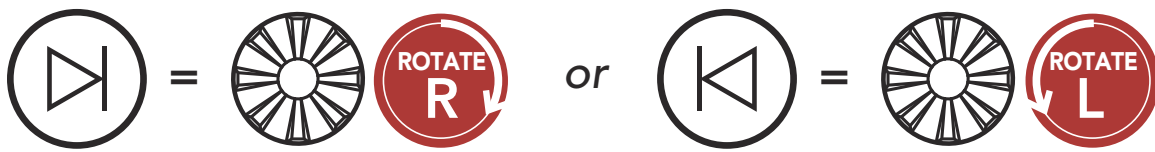
6. STEREO MUSIC

6.1 Playing Music with Bluetooth Devices

Play/Pause Music



Track Forward/Backward



7. MESH INTERCOM

7.1 What is Mesh Intercom?

Mesh Intercom™ is a dynamic communication system created by Sena that provides instant and effortless bike-to-bike communication without a pre-grouping process. **Mesh Intercom** allows riders to connect and communicate with nearby users without the need to pair each headset together.

The working distance between each **SPIDER ST1** in **Mesh Intercom** can be up to 2 km (1.2 miles) in open terrain. In open terrain, the **Mesh** can be extended up to 8 km (5 miles) between a minimum of six users. Within the same channel in **Open Mesh™** or the same private group in **Group Mesh™**, six users can talk at the same time and enjoy the optimal quality for their conversation.

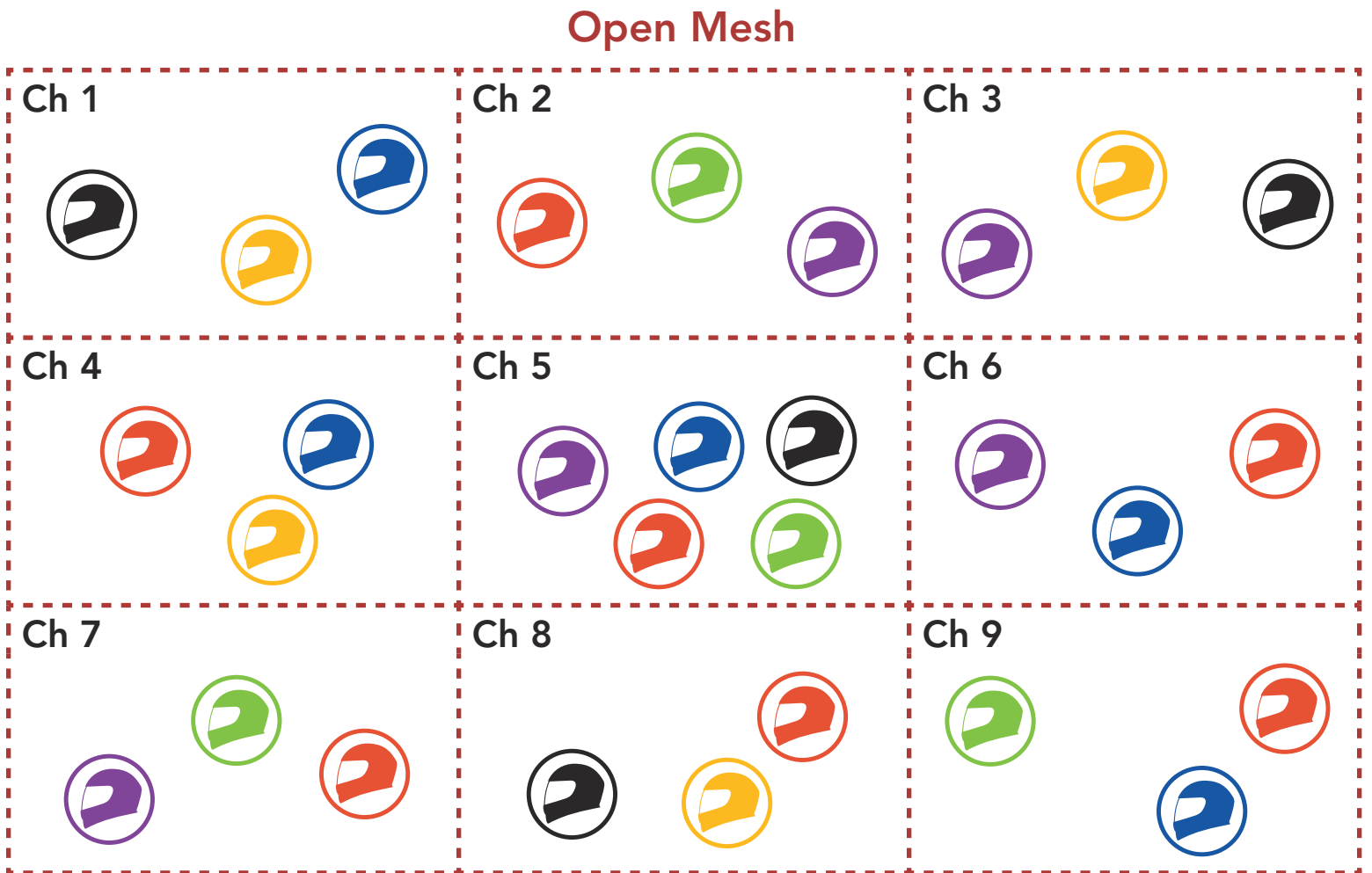
Mesh Intercom



7.1.1 Open Mesh

Open Mesh is an open group intercom function. Users can freely communicate with each other in the same **Open Mesh** channel and select which channel (1-9) to use through the headset.

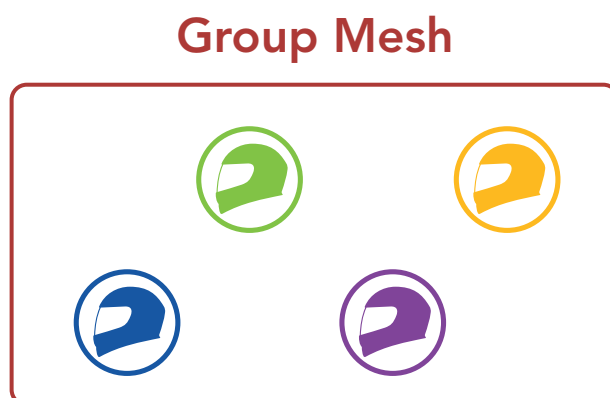
It can connect with a virtually unlimited number of users in each channel.



7.1.2 Group Mesh

Group Mesh is a closed group intercom function that allows users to join, leave, or rejoin a group intercom conversation without pairing each headset. Users can freely communicate with each other in the same private group in **Group Mesh**.

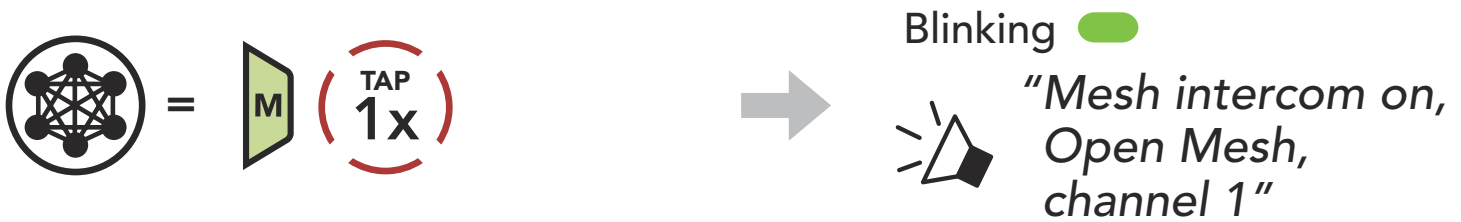
For closed intercom conversations using **Mesh Intercom**, a **Group Mesh** needs to be created by the users. When users create a private group in **Group Mesh** by **Mesh Grouping**, the headset automatically switches from **Open Mesh** to **Group Mesh**. Up to 24 users can all be connected in each private group.



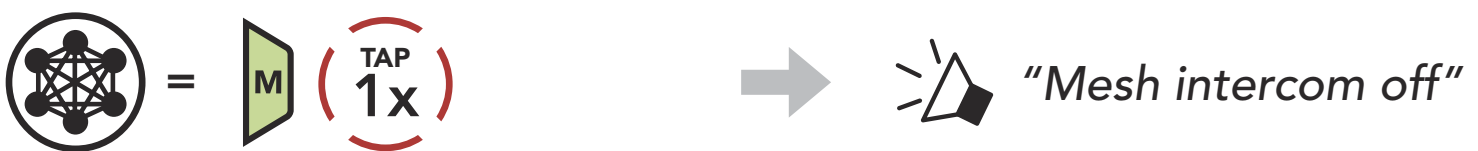
7.2 Starting Mesh Intercom

When **Mesh Intercom** is enabled, the **SPIDER ST1** will automatically connect to nearby **SPIDER ST1** users and allow them to talk to each other by pressing the **Mesh Intercom Button**.

Mesh Intercom On



Mesh Intercom Off



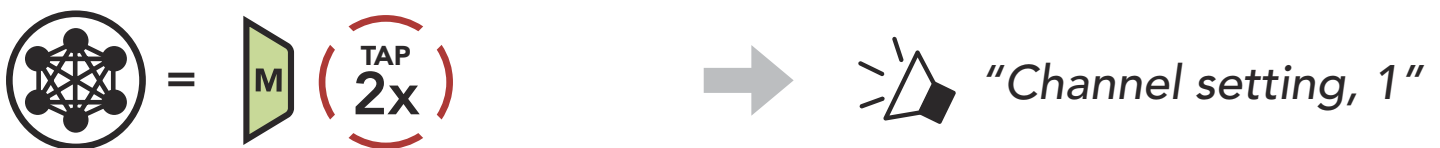
7.3 Using the Mesh in Open Mesh

When **Mesh Intercom** is enabled, the headset will be in **Open Mesh (default: channel 1)** initially.

7.3.1 Channel Setting (Default: channel 1)

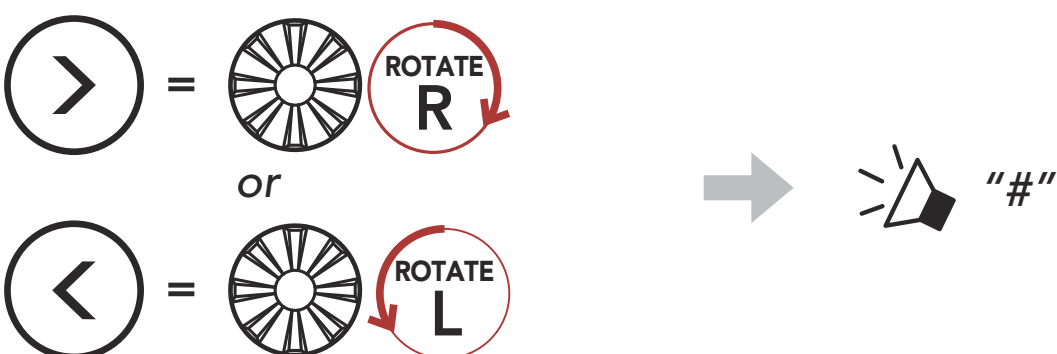
If the **Open Mesh** communication experiences interference because other groups are also using **channel 1 (default)**, change the channel. You can select from channels 1 to 9.

1. Double tap the **Mesh Intercom Button**.



2. Navigate between channels.

(1 → 2 → ●●● → 8 → 9 → Exit → 1 → ●●●)



3. Save the channel.



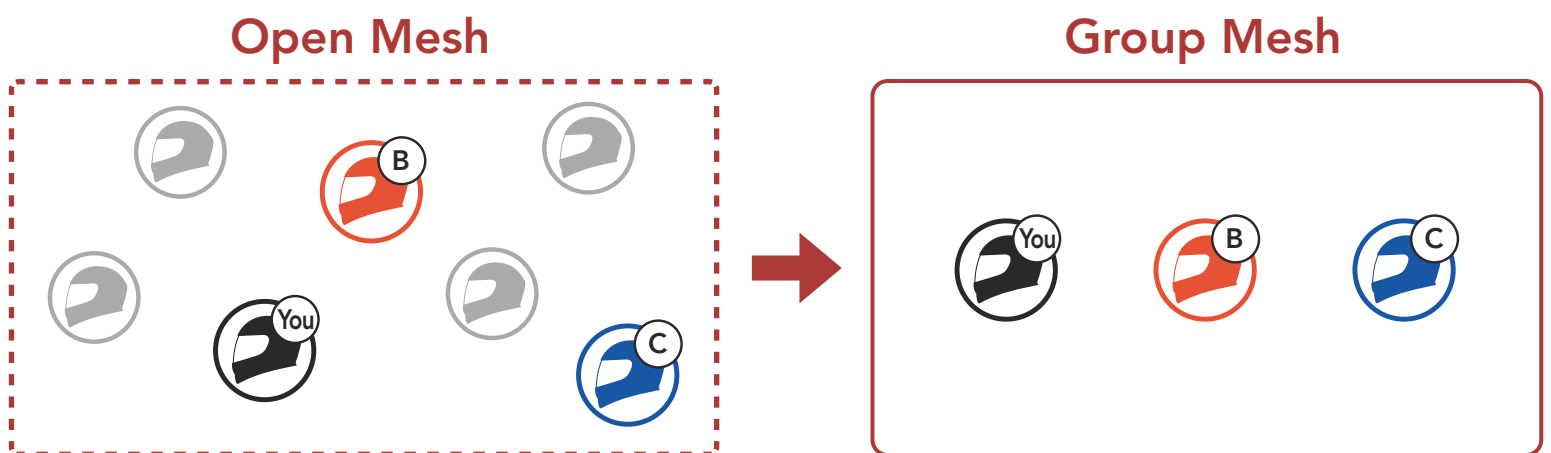
Note:

- **Channel Setting** always starts with channel 1.
- If you do not press any button for approximately **10 seconds** in a specific channel, the channel is automatically saved.
- The channel will be remembered even if you turn off the **SPIDER ST1**.
- You can use the **SENA MOTORCYCLES App** to change the channel.

7.4 Using Mesh in Group Mesh

7.4.1 Creating a Group Mesh

Creating a **Group Mesh** requires **two or more Open Mesh users**.



1. To enter **Mesh Grouping** to create a **Group Mesh**, press and hold the **Mesh Intercom Button** for **5 seconds** on the **users (You, B, and C)** headsets.



2. When **Mesh Grouping** is completed, the **users (You, B and C)** will hear a voice prompt on their headset as **Open Mesh** switches to **Group Mesh**.

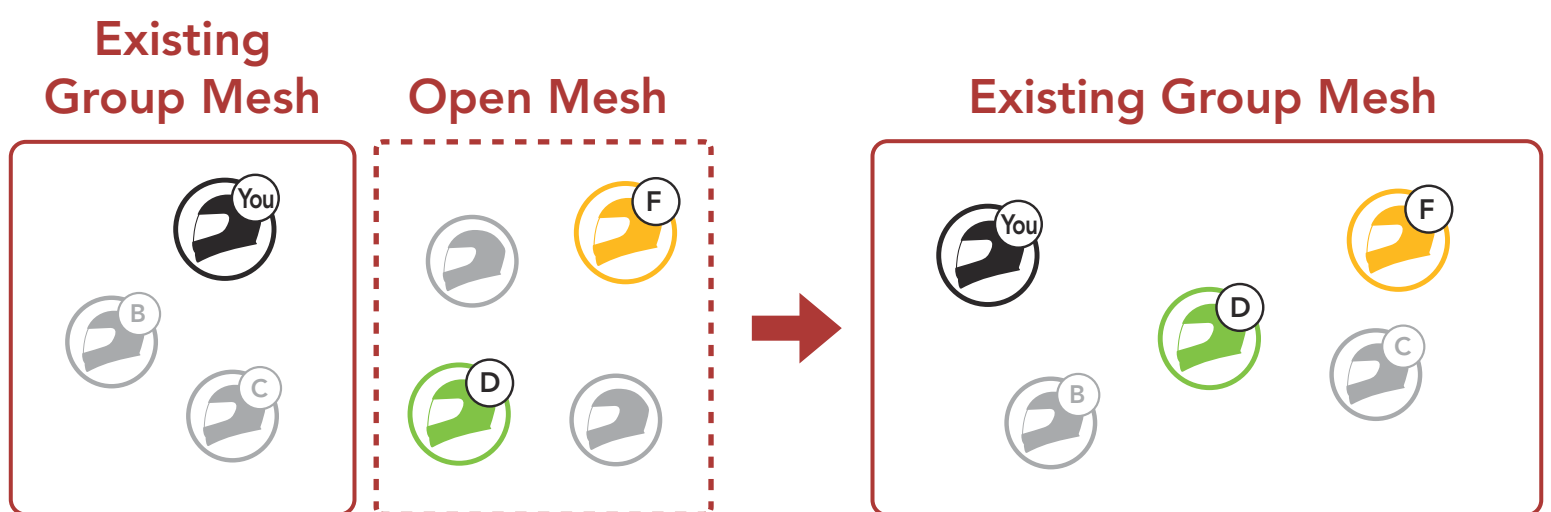


Note:

- If the **Mesh Grouping** is not completed within **30 seconds**, users will hear a voice prompt, **"Grouping failed"**.
- If you want to cancel during the **Mesh Grouping**, tap the **Mesh Intercom Button**.

7.4.2 Joining an Existing Group Mesh

One of the **current users** in an **Existing Group Mesh** can allow **new users (one or more)** in **Open Mesh** to join the **Existing Group Mesh**.



1. To enter **Mesh Grouping** to join the **Existing Group Mesh**, press and hold the **Mesh Intercom Button** for **5 seconds** on the headsets of **one (You) of the current users** in the **Existing Group Mesh** and the **new users (D and F)** in **Open Mesh**.



2. When **Mesh Grouping** is completed, the **new users (D and F)** will hear a voice prompt on their headset as **Open Mesh** switches to **Group Mesh**.



Note: If the **Mesh Grouping** is not completed within **30 seconds**, the current user (You) will hear a low tone double beep and the new users (D and F) will hear a voice prompt, **"Grouping failed"**.

7.5 Enable/Disable Mic (Default: Enable)

Users can enable/disable the microphone when communicating in a **Mesh Intercom**.

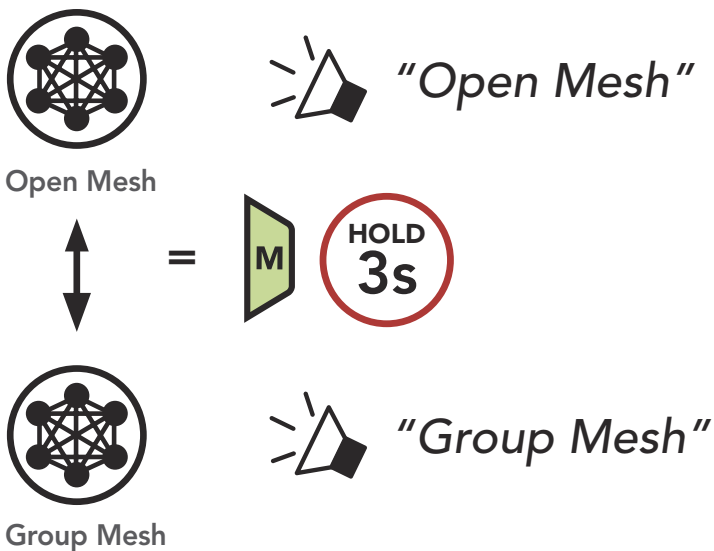


7.6 Toggling Open Mesh/Group Mesh

Users are able to toggle between **Open Mesh** and **Group Mesh** without resetting the **Mesh**. This allows users to keep the **Group Mesh Network** connection information while in **Open Mesh**.

Users can toggle to **Group Mesh** to communicate with participants from the stored **Group Mesh Network** connection information.

Toggle Between Open Mesh and Group Mesh



Note: If you have never participated in **Group Mesh**, you cannot toggle between **Open Mesh** and **Group Mesh**. You will hear a voice prompt, **"No Group Available"**.

7.7 Reset Mesh

If a headset in an **Open Mesh** or **Group Mesh** resets the **Mesh**, it will automatically return to **Open Mesh (default: channel 1)**.



8. MESH AUDIO MULTITASKING (ALWAYS ON)

Audio Multitasking allows you to have an intercom conversation while simultaneously listening to music.

The overlaid audio is played in the background with reduced volume whenever there is an intercom conversation and will return to normal volume once the conversation is finished.

The **Audio Multitasking** can be configured through the **Intercom-Audio Overlay Sensitivity** and the **Audio Overlay Volume Management settings**.

The **Intercom-Audio Overlay Sensitivity** and the **Audio Overlay Volume Management settings** can be found in the **Software Configuration Setting**, accessible through the **Sena Device Manager** or the **SENA MOTORCYCLES App**.

9. FUNCTION PRIORITY

The headset prioritizes connected devices in the following order:

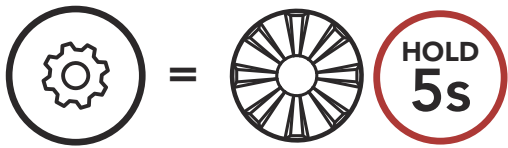
- (highest)** Mobile phone
- Mesh Intercom
- (lowest)** Bluetooth stereo music

A lower-priority function gets interrupted by a higher-priority function. For example, stereo music will be interrupted by an incoming mobile phone call.

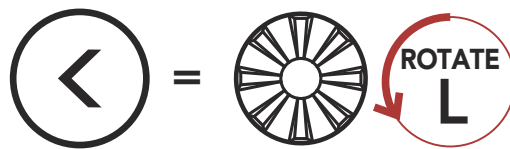
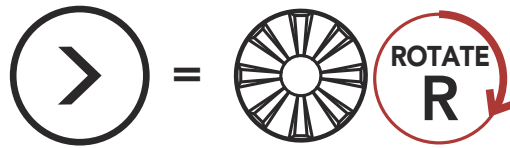
10. CONFIGURATION SETTING

10.1 Headset Configuration Menu

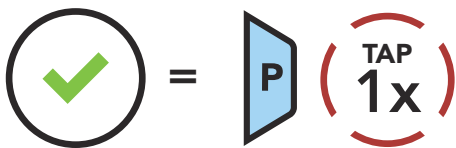
Access the Configuration Menu



Navigate Between Menu Options



Execute Menu Options



Headset Configuration Menu

Voice Configuration Menu	Tap the Phone Button
Second Mobile Phone Pairing	None
GPS Pairing	None
Exit	Execute

10.2 Software Configuration Setting

You can change the settings of the headset through the **Sena Device Manager** or the **SENA MOTORCYCLES App**.



10.2.1 Headset Language

You can select the device language. The selected language is maintained even when the headset is rebooted.

10.2.2 Audio Equalizer (Default: Off)

You can use the **Audio Equalizer** to increase/decrease the decibel level of different frequency ranges of audio.

- **Balance** will adjust all of the frequency ranges to be the same volume level (0 dB).
- **Bass Boost** will increase the bass range of audio (20 Hz - 250 Hz).
- **Mid Boost** will increase the mid range of audio (250 Hz - 4 kHz).
- **Treble Boost** will increase the high range of audio (4 kHz - 20 kHz).

10.2.3 VOX Phone (Default: Enable)

If this feature is enabled, you can answer incoming calls by voice. When you hear a ringtone for an incoming call, you can answer the phone by saying a word such as **"Hello"** loudly or by blowing air into the microphone. **VOX Phone** is temporarily disabled if you are connected to intercom. If this feature is disabled, you have to tap the **Jog Dial** or the **Phone Button** to answer an incoming call.

10.2.4 VOX Sensitivity (Default: 3)

VOX Sensitivity can be adjusted depending on your riding environment. **Level 5** is the highest sensitivity setting and **level 1** is the lowest.

10.2.5 Intercom-Audio Overlay Sensitivity (Default: 3)

The music will be lowered to play in the background if you talk over the intercom while the overlaid audio is playing. You can adjust the intercom sensitivity to activate this background audio mode. **Level 1** has the lowest sensitivity and **level 5** has the highest sensitivity.

Note: If your voice is not louder than the sensitivity of the selected level, the overlaid audio will not be lowered.

10.2.6 Audio Overlay Volume Management (Default: Disable)

The music overlaid audio reduces in volume whenever there is an ongoing intercom conversation. If **Audio Overlay Volume Management** is enabled, the volume level of the overlaid audio will not be reduced during an intercom conversation.

10.2.7 Voice Prompt (Default: Enable)

You can disable **Voice Prompts** by software configuration settings, but the following voice prompts are always on.

- Headset configuration settings menu, battery level indicator, speed dial

11. TROUBLESHOOTING

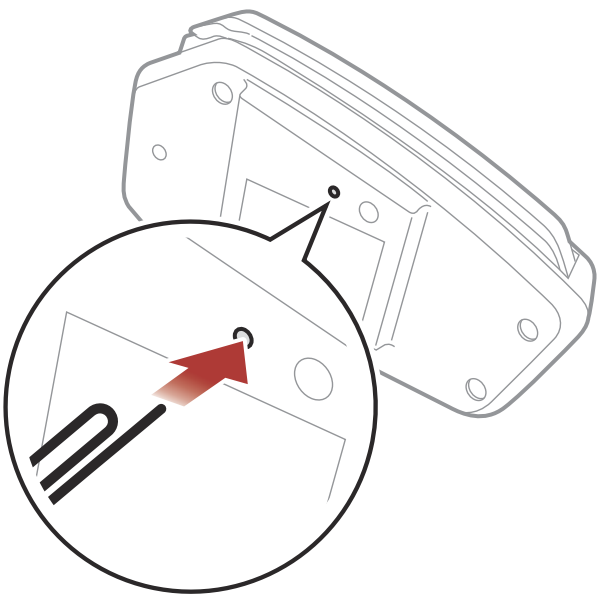
Please visit [sena.com](https://www.sena.com) for more troubleshooting information.

- Customer Support: [sena.com](https://www.sena.com)

11.1 Fault Reset

When the headset is not working properly, you can easily reset the unit:









1. Locate the **Pinhole Fault Reset Button** at the bottom of the main unit.
2. Gently insert a paperclip into the hole and tap the **Pinhole Fault Reset Button** with light pressure. The headset will shut down.



Note: Fault Reset will not restore the headset to factory default settings.

11.2 Factory Reset

To erase all of your settings and start fresh, the headset can be restored to factory default settings using the **Factory Reset** feature.

1.  =   →  "Factory reset"
2.  =   →  "Headset reset, good-bye"



Copyright © 2022 Sena Technologies, Inc.
All rights reserved.

© 1998–2022 Sena Technologies, Inc. All rights reserved.

Sena Technologies, Inc. reserves the right to make any changes and improvements to its product without providing prior notice.

Sena™ is a trademark of Sena Technologies, Inc. or its subsidiaries in the USA and other countries. SF1™, SF2™, SF4™, SFR™, SRL™, Momentum™, Momentum INC™, Momentum Lite™, Momentum Pro™, Momentum INC Pro™, Momentum EVO™, Cavalry™, Latitude SR™, Latitude SX™, Latitude S1™, 30K™, 33i™, 50S™, 50R™, 50C™, 5S™, 5R™, 5R LITE™, 20S EVO™, 20S™, 10S™, 10C™, 10C PRO™, ProRide EVO™, 10C EVO™, 10U™, 10Upad™, 10R™, ACS10™, ACS-RAM™, C1™, 3S™, 3S PLUS™, SMH5™, SMH5-FM™, SMH5 MultiCom™, SMH10™, SMH10R™, SPH10™, SPH10H-FM™, Savage™, Prism Tube WiFi™, Prism™, Bluetooth Audio Pack for GoPro®, Impulse™, R1™, R1 EVO™, R1 EVO CS™, R2™, R2 EVO™, R2X™, M1™, M1 EVO™, RUMBA™, RC1™, RC3™, RC4™, Stryker™, Handlebar Remote™, Wristband Remote™, PowerPro Mount™, Powerbank™, FreeWire™, WiFi Docking Station™, WiFi Sync Cable™, WiFi Adapter™, +mesh™, +Mesh Universal™, MeshPort Blue™, MeshPort Red™, MeshPort Black™, Econo™, OUTRUSH™, OUTRUSH R™, OUTSTAR™, OUTSTAR S™, OUTFORCE™, OUTRIDE™, EcoCom™, Parani A10™, Parani A20™, Parani M10™, pi™, Snowtalk™, Snowtalk2™, SR10™, SR10i™, SM10™, SPIDER RT1™, SPIDER ST1™, X1™, X1 Pro™, X1S™, Expand™, Expand Boom™, Bluetooth Mic & Intercom™, Tufftalk™, Tufftalk Lite™, Tufftalk M™ are trademarks of Sena Technologies, Inc. or its subsidiaries. These trademarks may not be used without the express permission of Sena.

GoPro® is a registered trademark of Woodman Labs of San Mateo, California. Sena Technologies, Inc. ("Sena") is not affiliated with Woodman Labs, Inc. The Sena Bluetooth Pack for GoPro® is an aftermarket accessory specially designed and manufactured by Sena Technologies, Inc. for the GoPro® Hero3 and Hero4 allowing for Bluetooth capabilities.

The Bluetooth® word mark and logos are owned by the Bluetooth SIG, Inc. and any use of such marks by Sena is under license. iPhone® and iPod® touch are registered trademarks of Apple Inc.

Address: 152 Technology Drive Irvine, CA 92618