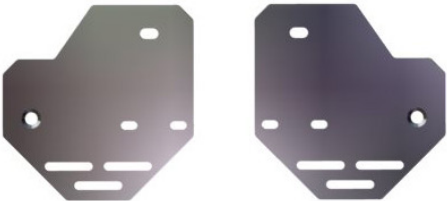


# INSTALLATION INSTRUCTIONS

## Bed Winch Mount: BWM-CF-UF1000



**Center Weldment**



**L & R Bed Rail Mounting Plates**



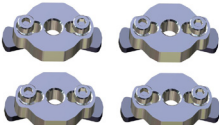
**Center Rail Mount**



**Remote Holder**



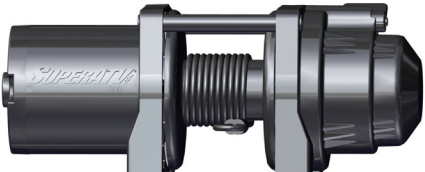
**Solenoid Bracket**



**Accessory Anchor**



**Extended Harness**



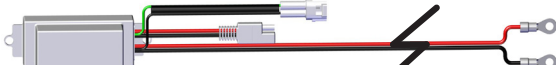
**Winch**



**Strap**



**3-way Harness**



**Electrical Control Box Wiring Assembly**



**Remote Electrical Connector Wiring Assembly**



**Winch Fairlead**



**Winch Hook**



**Corded Remote**



**Cable Tie (6pcs)**

Item	Description	Qty
A	M8x35 Hand Knob	4
B	M10x25 Flanged Button	4
C	M10x25 FT Socket Driven	2
D	M8 Washer	4
E	M6x16 Hex Flanged	4
F	4Mx20 SBHC	4
G	#8 Self-Tap Screw	7
H	Brake Line Clip	1
J	M8 Tooth Lock Washer Nut	4
K	M5 Flanged Nylock Hex Nut	4
L	TPE Sealing Grommet Nylock Hex	2



(A)



(B)



(C)



(D)



(E)



(F)



(G)



(H)



(J)

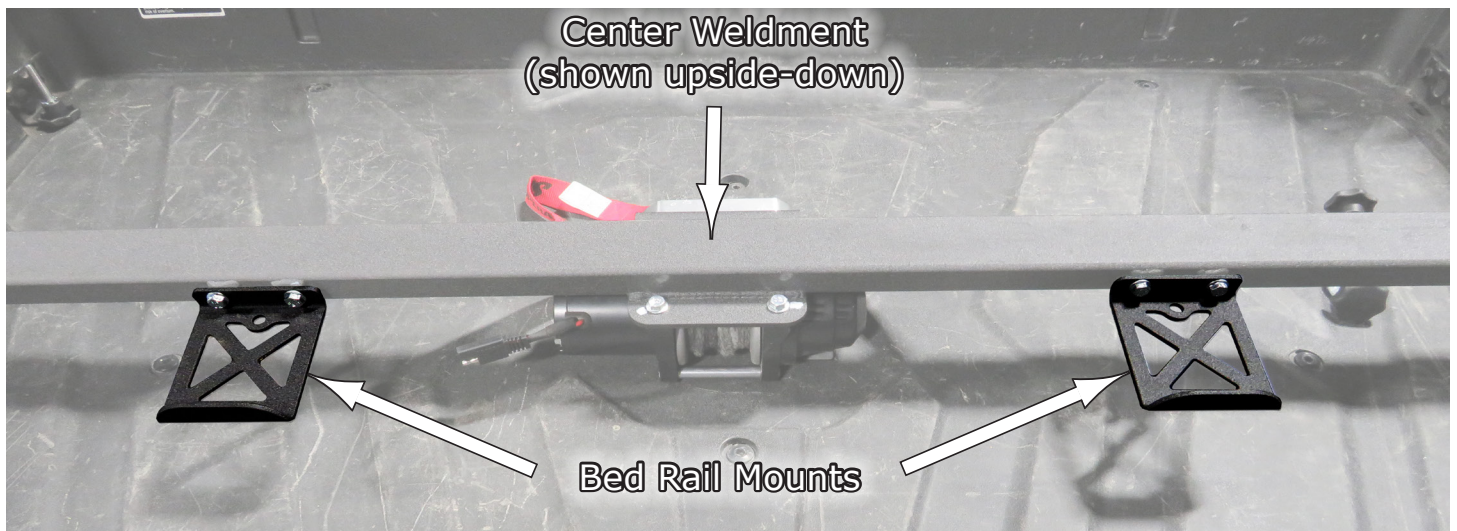
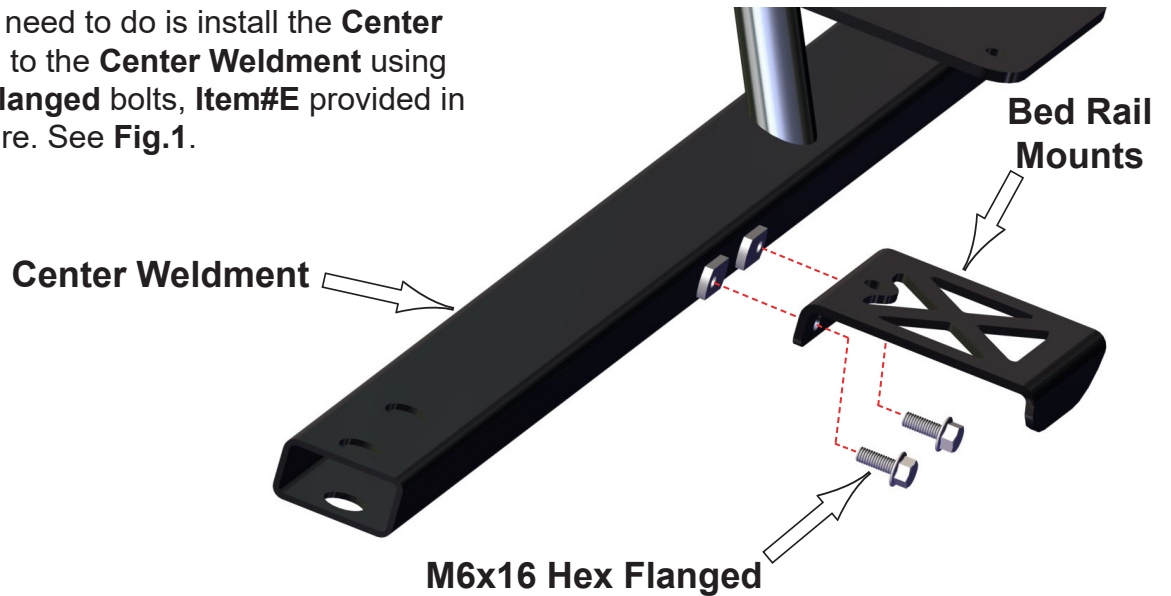


(K)



(L)

1. The first thing you need to do is install the **Center Bed Rail Mounts** to the **Center Weldment** using the **M6x16 Hex Flanged** bolts, **Item#E** provided in your kit, and secure. See **Fig.1**.



**Fig.1**

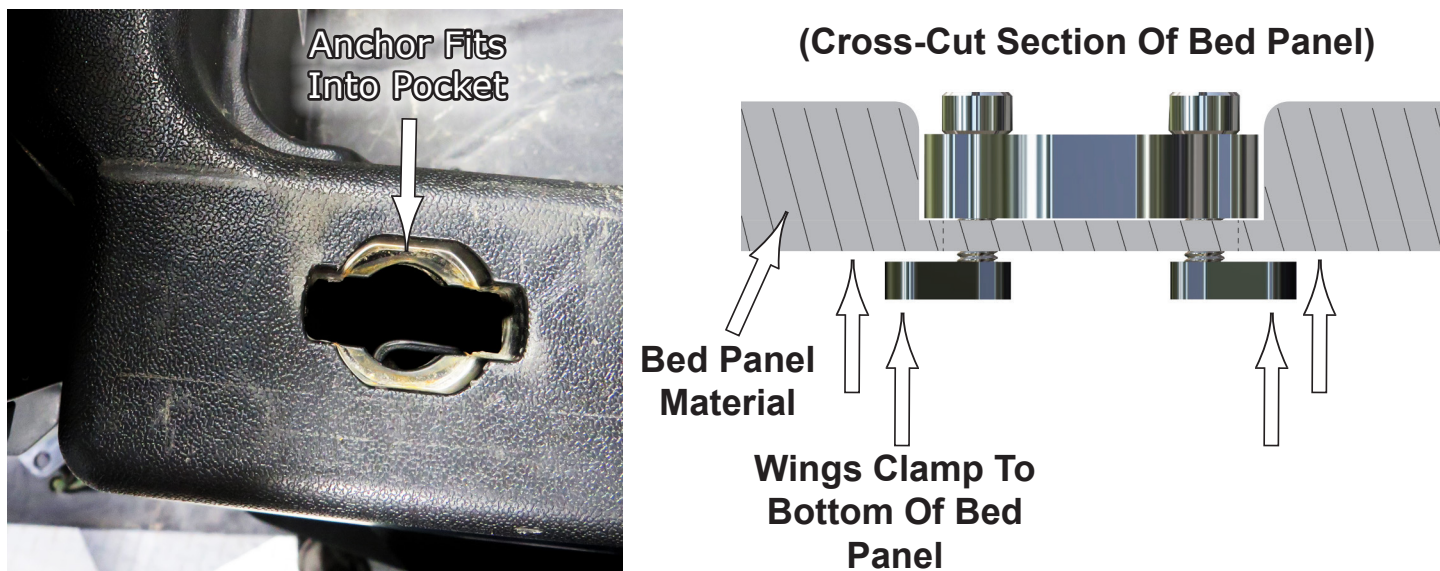
2. Next, you will need to install the four (4) **Accessory Anchors** into the bed on each upper corner as shown in **Fig.2**. To install the anchors, you drop them into the recessed areas provided in your bed, then you will need to reach from underneath to position the wings so that they clamp the bed material holding the anchor in place. You will need to hold the wings in position while you tighten down the screws pinching the anchor to the bed. **Fig.2** shows the wings and the two (2) locations to install them at on each corner.



**Fig.2**



3. The Anchors fit into the recessed pockets in the bed, sitting all the way down, then you will need to turn the wings so that they are now under the bed lining material, which will pull up to clamp the anchor in place as you screw down the screw. See **Fig.3**. Repeat for both left and right corners.



**Fig.3**



4. Next, you will need to install the **Bed Rail Mounting Plates**, one in each corner. You will do this by using the **M10x25 Flanged Button Head screw, Item#B**, and the **M10 FT Socket Driven screw, Item#C** provided in your kit. **Fig.4** shows mounting the plate and the location of each different screw. Tighten down secure. Repeat same procedure for opposite side.



**Fig.4**

## Winch Kit Hardware



5. Now mount the **Winch Motor** onto the frame by using the **M6x20 Flanged Hex Head** screws that came with your winch kit package. Install the **Fairlead** to the motor frame using the **M10x 30 Hex Socket** screws and **M10 Nylock Nuts**. Then install the **Winch Hook** and **Strap** included in your kit. We will hook up the wiring later in the following steps. See **Fig.5**.

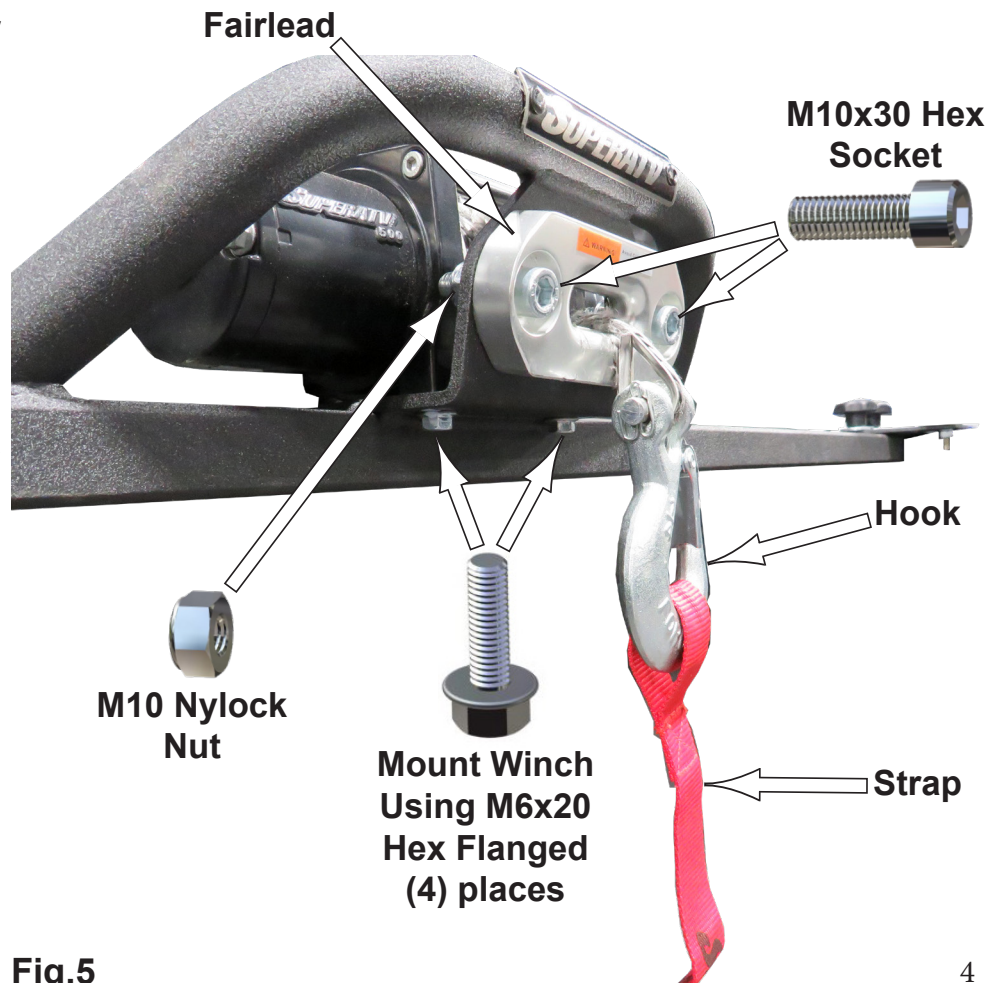
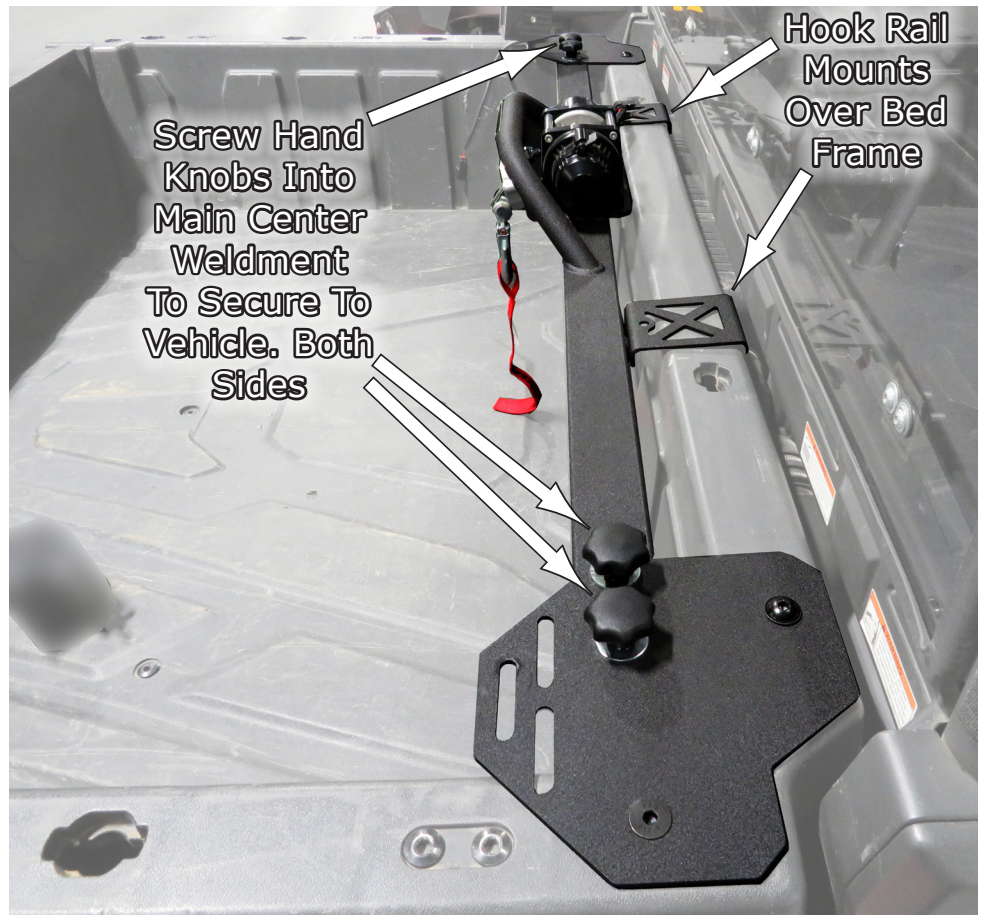


Fig.5



6. After you have the **Winch** mounted and the **Fairlead**, you can now mount the assembly to the vehicle. You do this by hooking the **Center Rail Mounts** that you attached to the main **Center Weldment** over the front of the bed frame as shown in **Fig.6**. Be sure that the ends go **UNDER** the corner **Mounting Plates**. Then attach the **Center Weldment** to the Corner **Mounting Plates** using the **Hand Knobs** provided in your kit. There are two (2) per corner also shown in **Fig.6**



**Fig.6**

7. Once you have the Winch all mounted and in place, now you can start running the **Electrical Harnesses** to connect the Winch to the power and controls. The first thing is to remove the seats and lower center console as shown in **Fig.7**.

## Electrical Hook-up

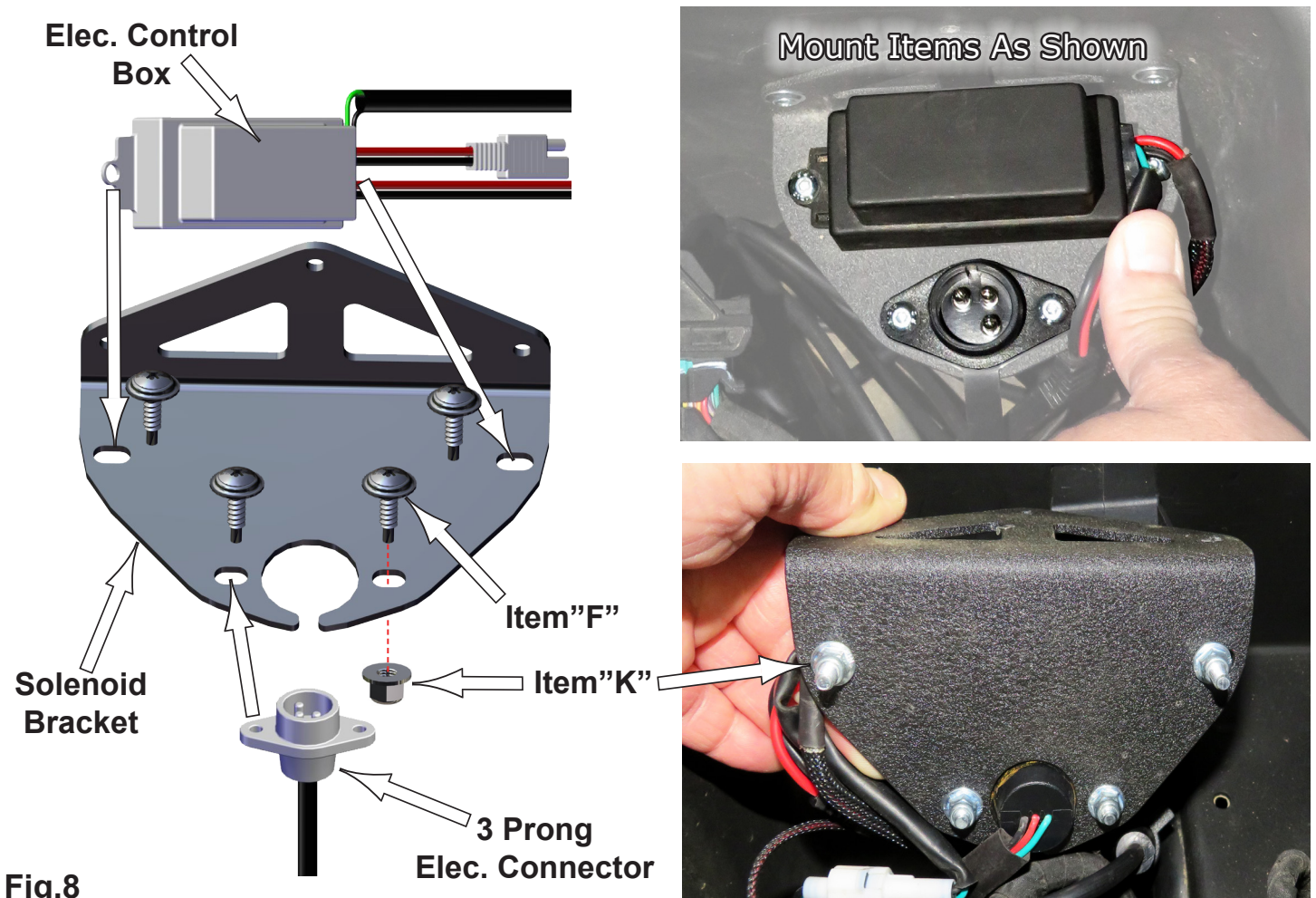


**Fig.7**



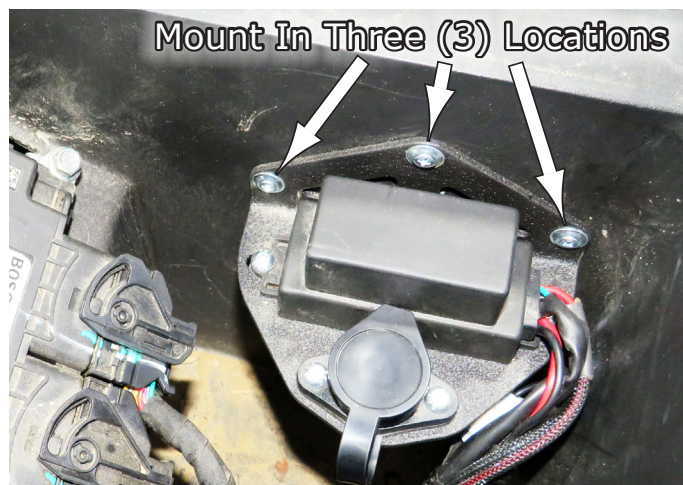


8. Now install the **Electrical Control Box** and the **Electrical Connector** (3 prong) onto the **Solenoid Bracket** using the **4Mx20 SBHC Screws, Item "F"** and **M5 Flanged Nylock Nut, Item "K"** provided in your kit. **Fig.8** shows where and how they are applied.

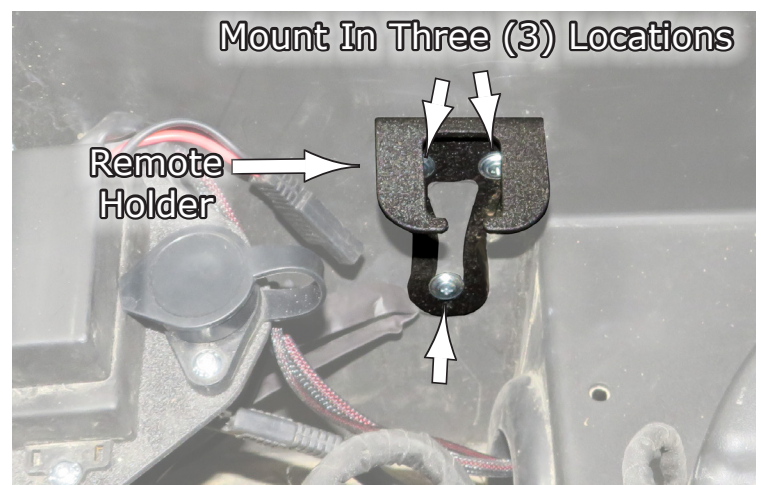


**Fig.8**

9. Next, mount the entire **Solenoid Bracket** onto the inside of the center console area (front side) in three (3) places using the **#8 Self Tap Screws, Item "G"** provided in your kit. See **Fig.9a**. Then mount the **Remote Holder** in the same console area next to it (passenger's side) using the same self-tap screw as shown in **Fig.9b**. **Be sure to hang the remote in the holder to adjust the height, before installing, to be sure the seat can close without hitting it!**



**Fig.9a**



**Fig.9b**



10. Next, you can now start to run the **Wiring Harnesses**. The best place to start is to place them all under the passenger's side seat as shown in **Fig.10a**. There are thicker cables and then a real thin one that will run up to the front coming from the Remote Harness. After running the thin to the front, we had a lot of extra cable which we just wrapped in place as you can see in **Fig.10a**. We will show you where to route to the front and rear areas in the coming steps. Also notice that you will route the cable ends that connect to the **Remote**, the **Elec. Control Box** and the **Winch** in back and also to the battery for power. Harness connectors will only fit one mating connector, so connecting is fairly easy. So first route the one for the **Control Box** up under to the center area as shown in **Fig.10a**. The Remote cable will run from the other side back to this side. **Fig.10b** shows where they come thru into the middle section.

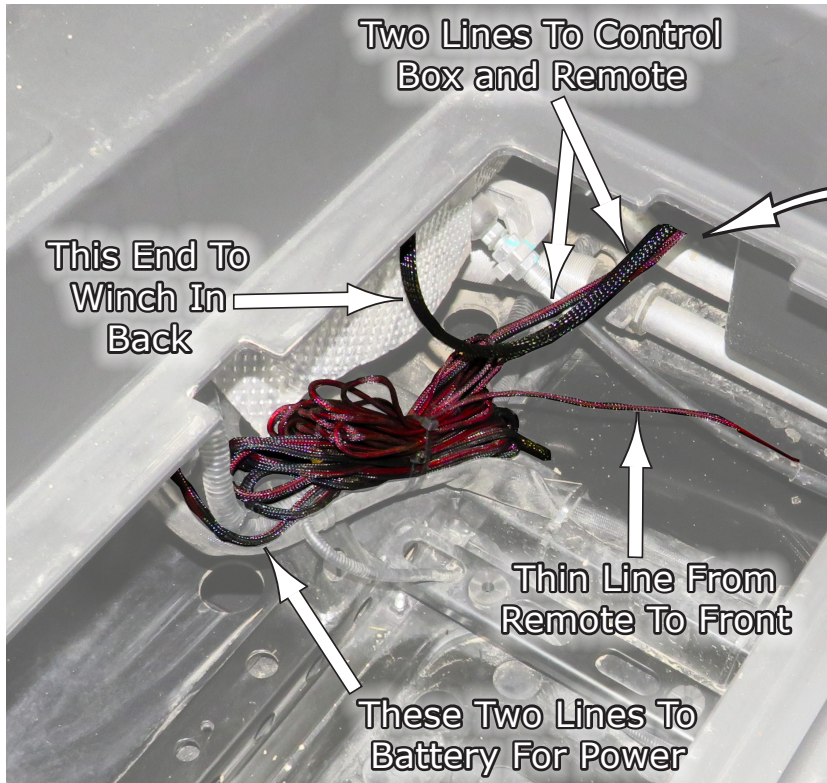


Fig.10a

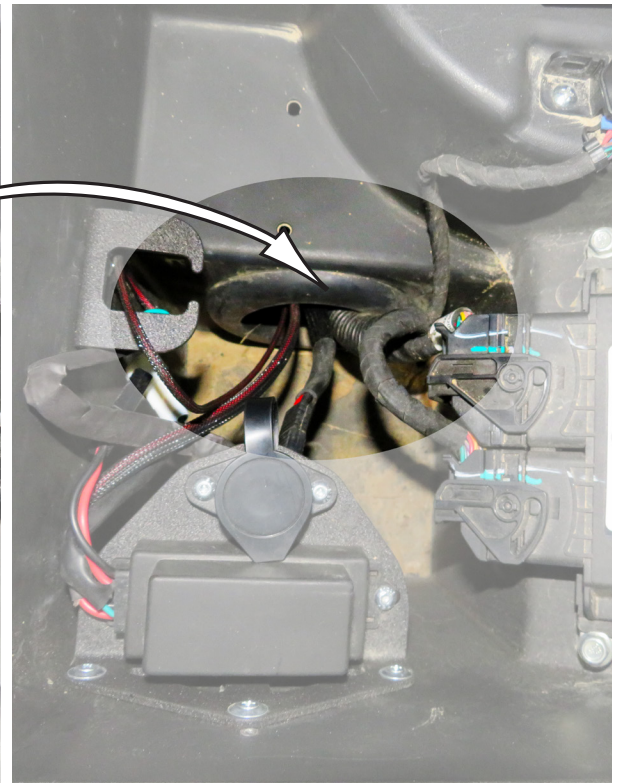


Fig.10b



11. Now from the center area where you installed the Control Box, pull the cable up thru from the passenger's side and connect it to the Control Box Cable as shown in Fig.11a-b.

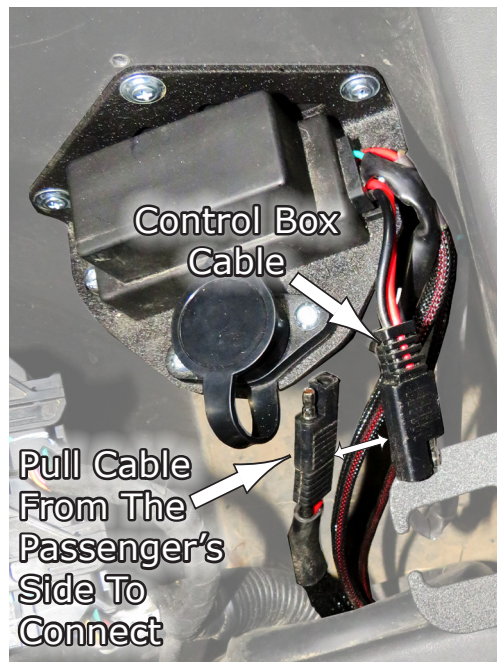


Fig.11a

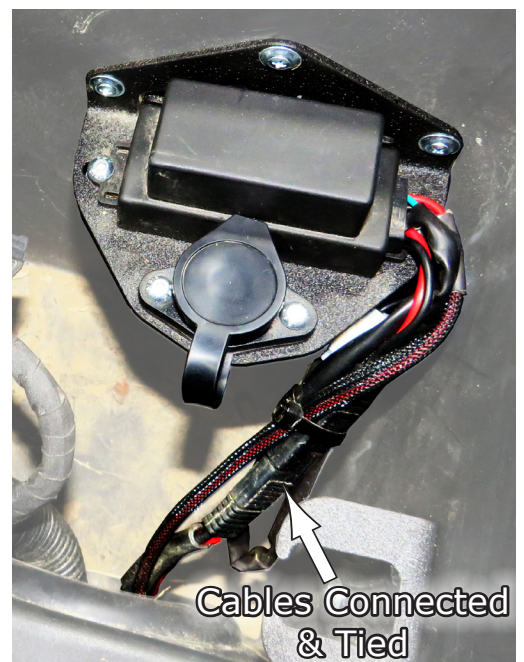
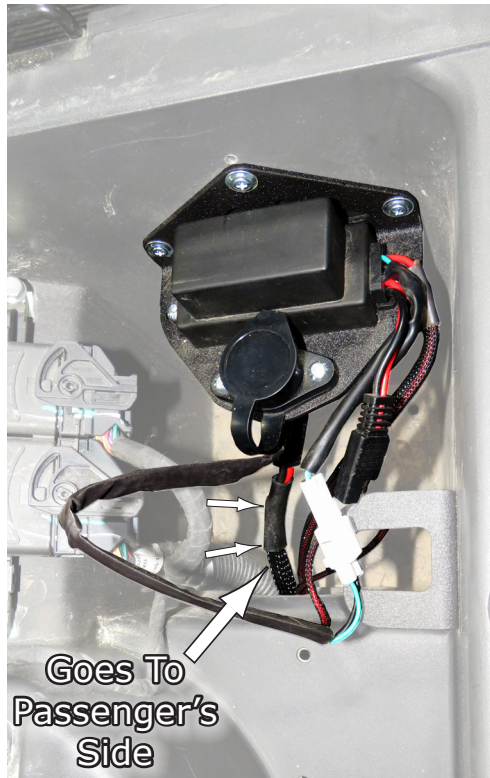


Fig.11b

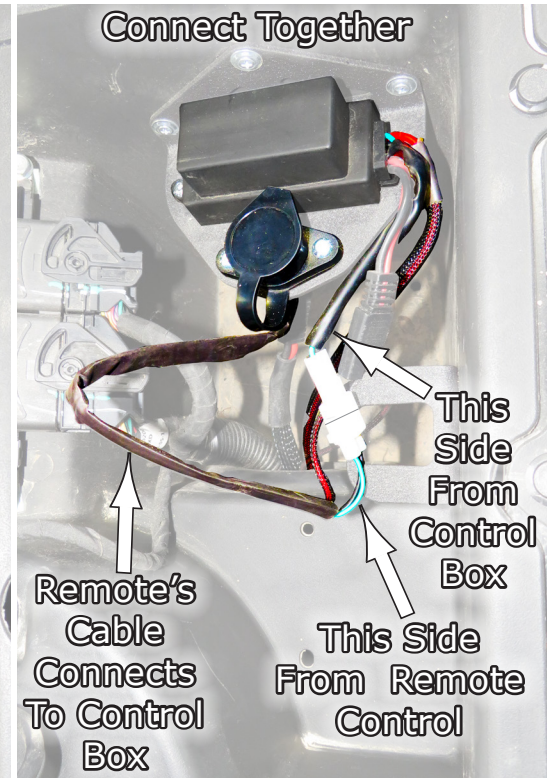


12. Next, notice the **Remote** larger cable going on thru to the Passenger's side as noted previously. See **Fig.12a**.

Now connect the cable from the **Remote Control** to the cable coming from the **Control Box**. This has Green and Black wires and a White Connector. See **Fig.12b**.



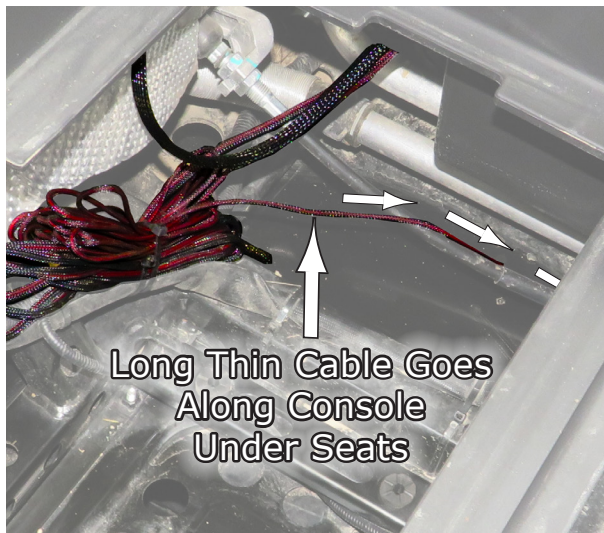
**Fig.12a**



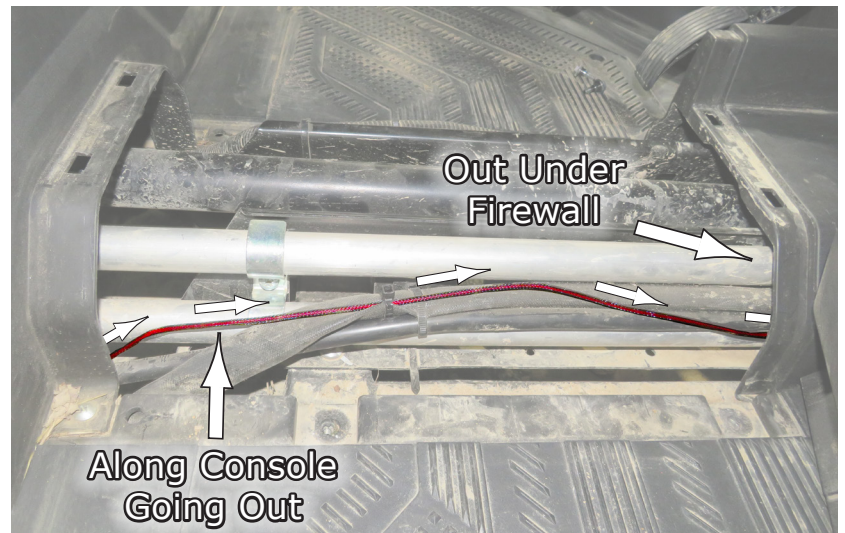
**Fig.12b**



13. Now you can route the Thin cable from the Remote to the front. Just route it following the factory line under the front seats as shown in **Fig.13a**, then along under the center console in front of the Driver/Passenger seats as shown in **Fig.13b**.



**Fig.13a**



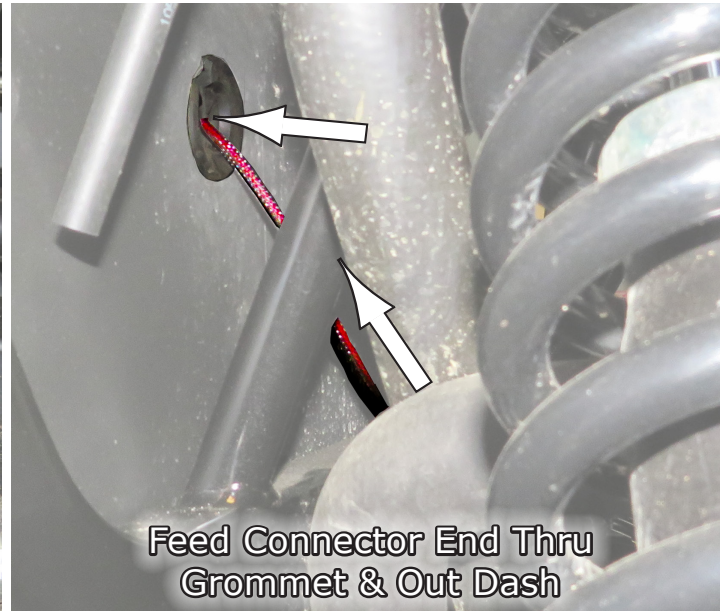
**Fig.13b**



14. Cable comes out under the firewall, **Fig.14a**, and up to the small round rubber firewall grommet as shown in **Fig.14b**. Cut a larger slit in the grommet if needed to pass the cable back thru into the dash area.



**Fig.14a**



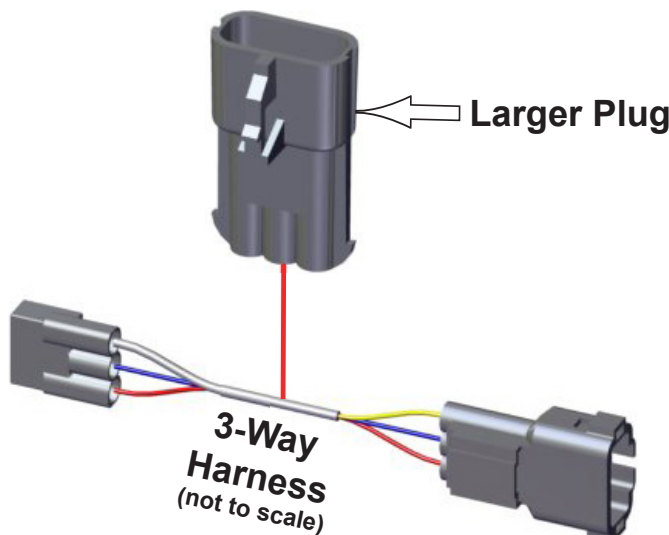
**Fig.14b**

15. Now go around to the front of the dash, remove the dash cover, reach in and pull the connector you just fed thru the grommet out thru the accessory cutout as shown in **Fig.15**. Just let hang until after this next step.

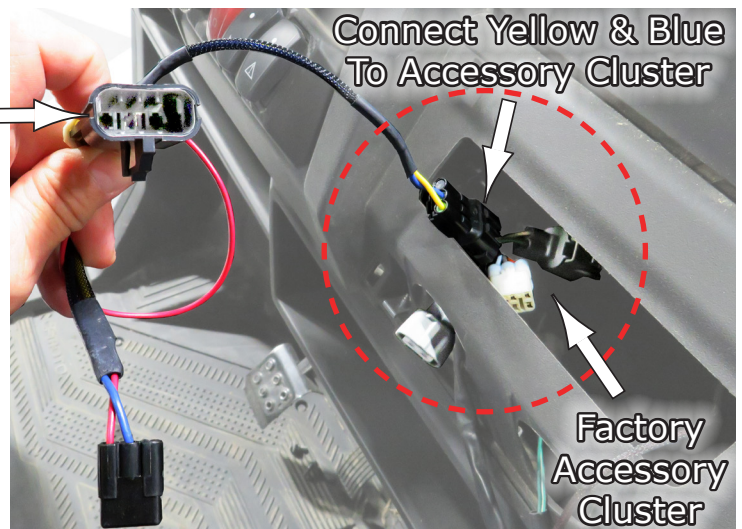


**Fig.15**

16. Next, you need to locate the Factory Accessory Connector Cluster right inside the cutout of the dash. Then locate the **3-Way Harness** in your kit, **Fig.16a**, and connect the Yellow & Blue connector to the connector plug that mates to it in the Factory Accessory cluster as shown in **Fig.16b** circled in Red.



**Fig.16a**



**Fig.16b**



17. Now, connect the larger plug from the **3-Way Harness** to the thin cable you ran up into the dash and pulled out, as shown in **Fig.17a**. Now that you have two (2) of the three (3) wires from the **3-Way** connected, there is one (1) connector left which is an extra auxillary connector not being used in this installation. You can just tuck it back in the dash area with the rest of the factory cluster for future use if needed. See **Fig.17b**.



**Fig.17a**

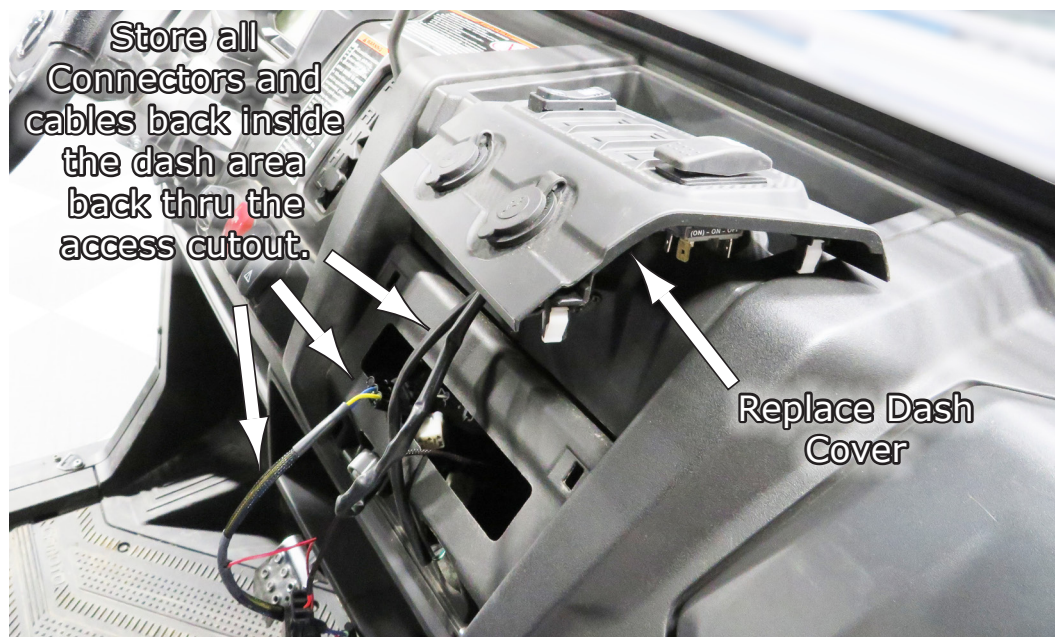


**Fig.17b**



18. After you've connected the harness to the dash area, you can now take all the connectors from the factory cluster as well as your new ones and tuck them all back in the dash area, and replace the dash cover. See **Fig.18**.

Now you're ready to run the harness to the back areas for power and to the Winch.



**Fig.18**



19. Now, back under the passenger's seat area where all the harnesses are, you will run two (2) cables to the rear. The first one is a small two (2) wire cable for the battery power. **Fig.19** shows this cable, and that you will run it back up thru the hole also shown in **Fig.19**, which leads right into the battery compartment. So route it thru this hole. See **Fig.19**.



**Fig.19**

20. Next, go around to the back and raise the bed to view the battery area. Now find the cable you just pushed thru the hole and pull it up and attach the Red to the positive terminal block and Black to the negative block as shown in **Fig.20**.



**Fig.20**



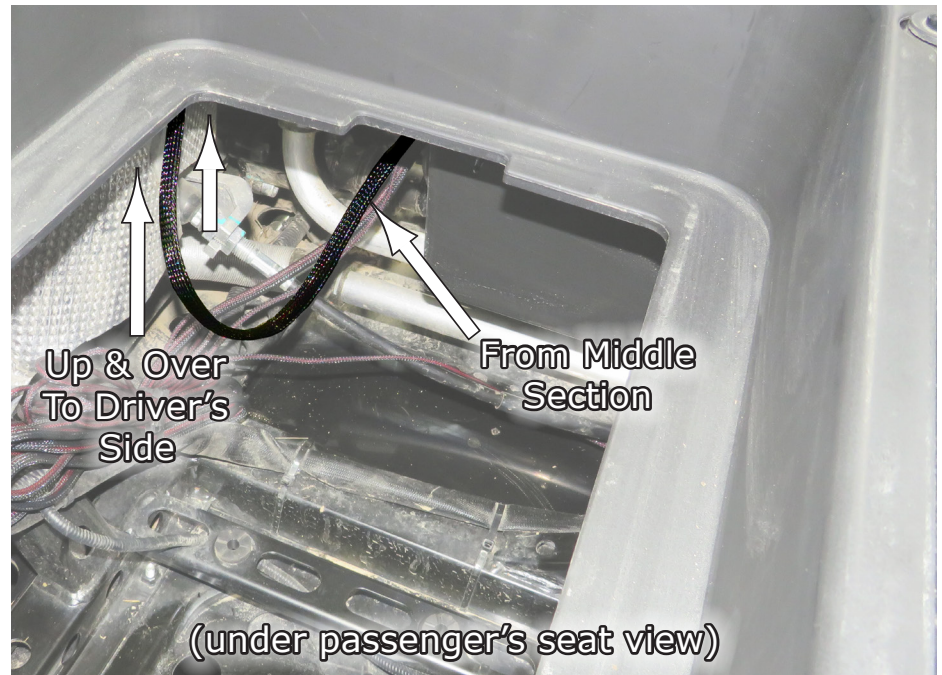
21. The next thing to run is the harness cable for the **Winch Motor**. Go back around to the harnesses under the passenger's seat as before and locate the thicker cable coming from the Control Box in the middle section shown in **Fig.21**.



**Fig.21**



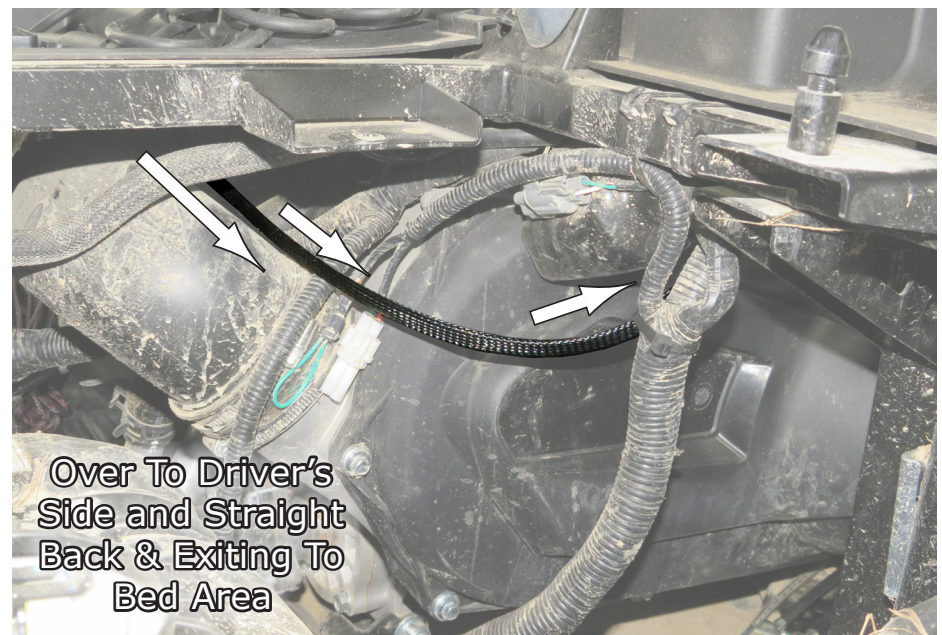
22. Now route it back up and over towards the Driver's side so that it goes out the back side as shown in **Fig.22**.



**Fig.22**



23. Viewing from under the Driver's seat, you can see the **Winch Cable** we just pushed over to this side and that we routed it on back and upwards right behind the driver's seat, as shown in **Fig.23**. This will exit out the back following the factory cable harnesses along the framing as you will see in the next step.



**Fig.23**



24. After feeding the cable thru to the back side bed area, and now looking back there with the bed in the up position, you can see that we followed the factory harness along the frame and zip-tied it in place heading to the rear of the vehicle. See Fig.24.



Fig.24

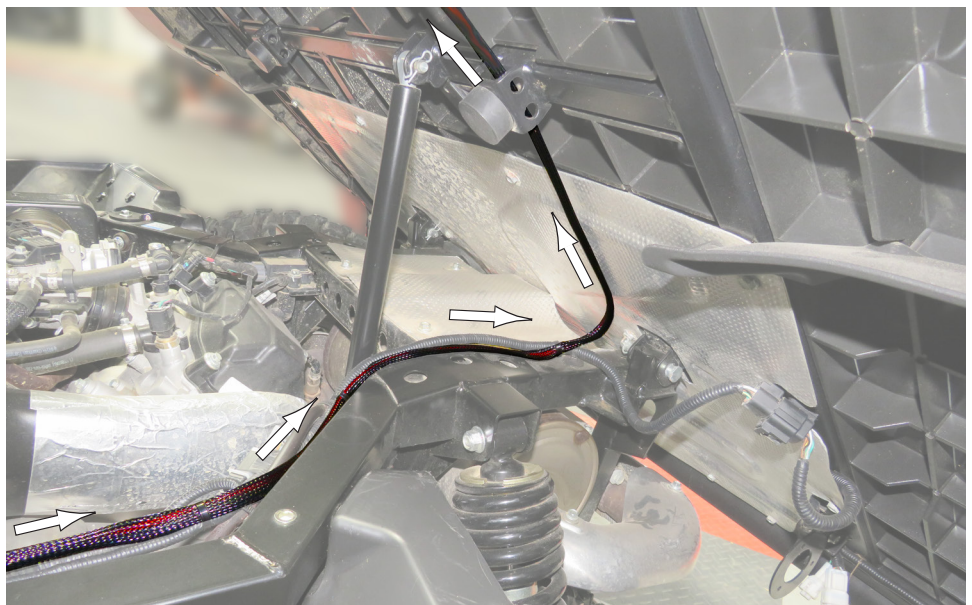


Fig.25a

25. Continuing on back following the frame, you can see we routed the harness all the way to the back and up onto the under side of the bed, attaching it as we go. See Fig.25a. And on across the under bed and back up to the side to go thru a hole in the bed lip as shown in Fig.25b.

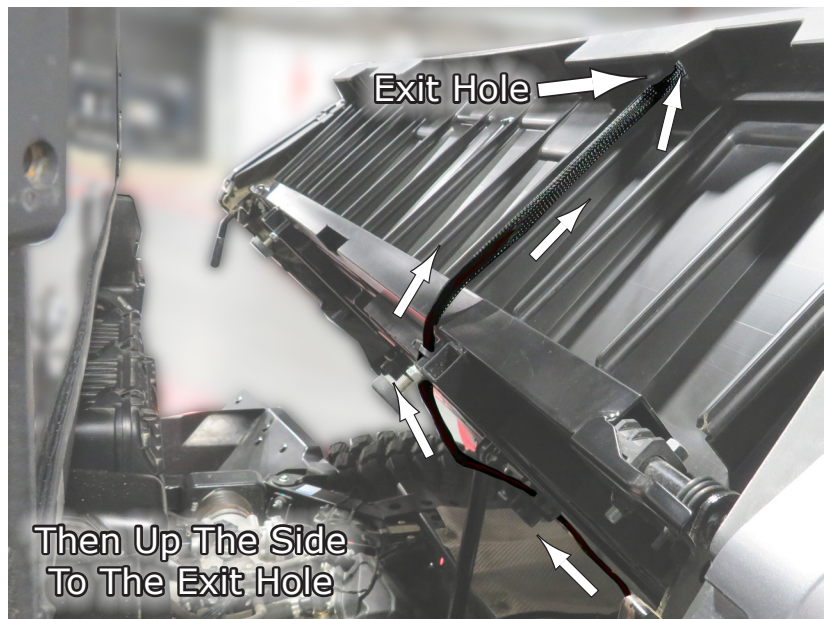


Fig.25b



26. Then Winch connector exits thru this hole in the bed as shown in **Fig.26**. (This picture is showing without the winch mounted)



**Fig.26**

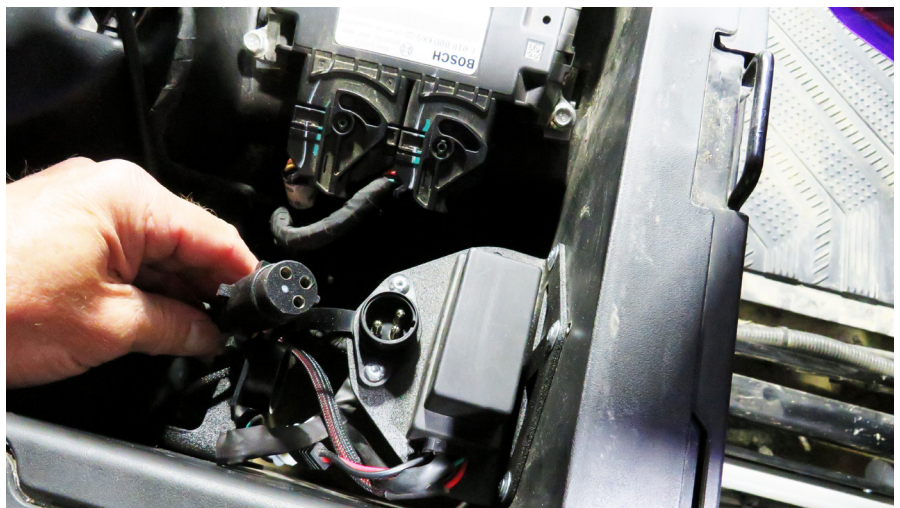
27. Next, connect the harness connector to the Winch Motor Connector for power as shown in **Fig.27**. Then secure the harness coming out of the exit hole to protect from rubbing or pulling, also shown in **Fig.27**.



**Fig.27**



28. Now go back and plug in the remote into the 3-prong connector you installed previously and test the system. See **Fig.28**.



**Fig.28**





**Liability Statement**

SuperATV's® products are designed to best fit user's ATV/UTV under stock conditions. Adding, modifying, or fabricating any factory or aftermarket parts will void any warranty provided by SuperATV® and is not recommended. SuperATV's® products could interfere with other aftermarket accessories. If user has aftermarket products on machine, contact SuperATV® to verify that they will work together.

Although SuperATV® has thousands of satisfied customers, user should be aware that installing lift kits, long travel, or suspension kits, tires, etc. will change the ride of machine and may increase maintenance and part wear. Operating any off-road machine while, or after, consuming alcohol and/or drugs increases risk of bodily harm or death. No warranty or representation is made as to this product's ability to protect user from severe injury or death. SuperATV® urges operators and occupants to wear a helmet and appropriate riding gear at all times.

By purchasing and installing SuperATV® products, user agrees that should damages occur, SuperATV® will not be held responsible for loss of time, use, labor fees, replacement parts, or freight charges. SuperATV®, nor any 3rd party, will not be held responsible for any direct, indirect, incidental, special, or consequential damages that result from any product purchased from SuperATV®. The total liability of seller to user for all damages, losses, and causes of action, if any, shall not exceed the total purchase price paid for the product that gave rise to the claim.

SuperATV® will warranty only parts provided by SuperATV®. Any damage or problems with OEM housings, bearings, seals, or other manufacturers' products will not be covered by SuperATV®. SuperATV® parts and products are not warranted if item was not installed properly, misused, or modified.

Installing, adding, modifying, or fabricating any factory or aftermarket product to your ATV/UTV may violate certain local, state, and federal laws. Be advised that laws vary depending on town, city, county, state, etc. Use of certain products on public streets, roads, or highways may be in violation law. The Buyer is solely and exclusively legally and personally responsible for any violation of the law by the installation or use of the product. You must abide by all local, state, and federal laws, including but not limited to vehicle safety, traffic laws, and ordinances. It is your responsibility to know the laws and how they apply to you.

The Buyer is responsible to fully understand the capability and limitations of his/her vehicle according to manufacturer specifications, warnings and instructions and agrees to hold SuperATV® harmless from any damage resulting from failure to adhere to such specifications, warnings and/ or instructions. The Buyer is also responsible to obey all applicable federal, state, and local laws and ordinances when operating his/her vehicle while using this product, and the Buyer agrees to hold SuperATV® harmless from any violation thereof.

If you have any problems/questions on this kit, contact us by email at Superatv.com.

**Need help with your installation?**



sales@superatv.com



www.superatv.com



1-855-743-3427



8:00am - 9:00pm EST M-Th  
8:00am - 7:00pm EST Friday  
9:00am - 2:00pm EST Saturday

*Thank You  
For Choosing*



**Like SuperATV on Facebook to keep up to date on new products!**