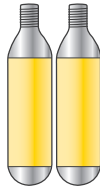


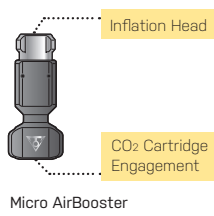


GB

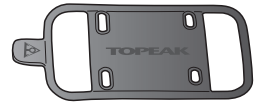
- Accepts all 16g threaded CO₂ cartridges.
- Recommended to use Topeak 16g threaded CO₂ cartridges.
- Please read all instructions before first use.



16g Topeak Threaded CO₂ Cartridge x 2



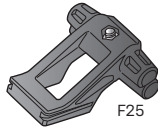
Micro AirBooster



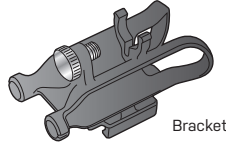
Rubber Cover



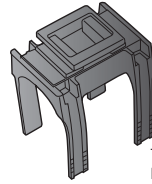
Mounting Straps x 2



F25



Bracket



Top Tube Mounting Bracket

HOW TO USE MICRO AIRBOOSTER

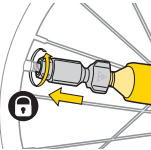
Schrader Valve

1



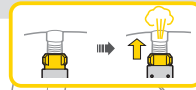
Thread-in CO₂ cartridge.

2



Install and thread-in inflation head to Schrader valve.

3



Start and regulate CO₂ flow by pushing inflation head onto valve stem.

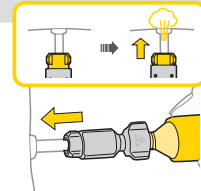
Presta Valve

1



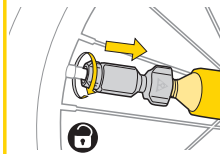
Thread-in CO₂ cartridge.

2



Start and regulate CO₂ flow by pushing inflation head onto valve stem.

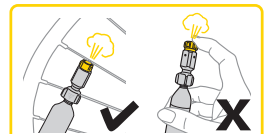
NOTE



To avoid possible personal injury and damage to bike and /or tool, ensure to disengage CO₂ inflator properly after use by unthreading inflation head in correct direction.

WARNING

- If using the Micro AirBooster inflator continuously, make sure to wait 20 seconds in between cartridges for the rubber grommet inside the inflation head to return to its original position. Otherwise, a gas leak may occur and prevent proper inflation.
- When opening the CO₂ cartridge, point the inflator head away from yourself and others.
- DO NOT use Micro AirBooster Inflator if any part is cracked or broken.
- DO NOT expose the CO₂ cartridge to heat, or store at temperatures above 120°F (49°C), or store in enclosed vehicles.
- Make sure to wear gloves when inflating to avoid injury.
- The barrel and CO₂ cartridge may become extremely cold/ frosty when the CO₂ gas is expelled.
- DO NOT try to unscrew the Micro AirBooster inflation head until it has warmed sufficiently to touch.
- Keep out of reach of children.

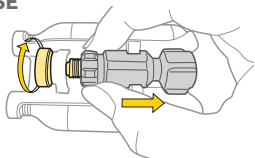


After each inflation, make sure all CO₂ gas has been discharged by pushing the Micro AirBooster inflation head several times.

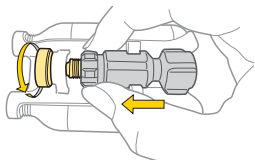


MICRO AIRBOOSTER

RELEASE

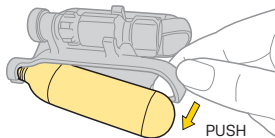


INSTALL

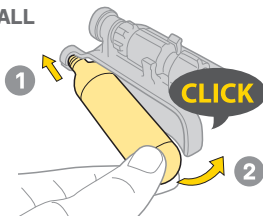


CO2 CARTRIDGE

RELEASE

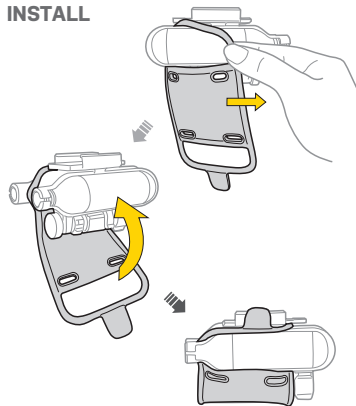


INSTALL

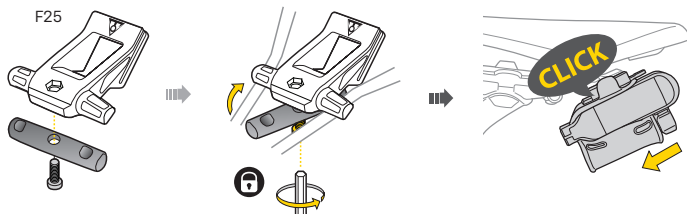


RUBBER COVER

INSTALL

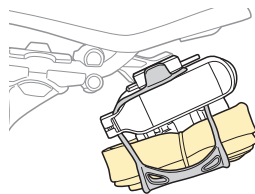


MOUNTING ON SADDLE RAIL



ADDED FEATURES

Mount inner tube on AirBooster Extreme.

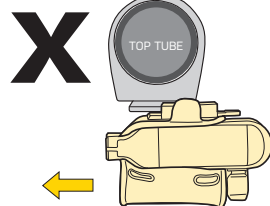


MOUNTING ON TOP TUBE



Cut the strap for proper length before installation.

Fasten bracket with mounting straps and install AirBooster Extreme as shown.

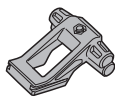


DO NOT install AirBooster Extreme as shown.

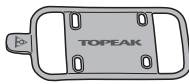
SPARE PARTS



16g Threaded CO₂ cartridge
Art no. TCOT-2 (2 pcs)
TCOT-5 (5 pcs)



F25
Art no. TC1018



Rubber Cover
Art no. TRK-AE01



O-ring
Replacement Kit
Art no. TRK-HR01

The valve head o-ring is subject to wear and may cause air leakage over time. Periodically inspect and replace o-ring if needed.

WARRANTY

2-year Warranty: All mechanical components against manufacturer defects only.

Warranty Claim Requirements
To obtain warranty service, you must have your original sales receipt. Items returned without a sales receipt will assume that the warranty begins on the date of manufacture. All warranties will be void if the product is damaged due to user crash, abuse, system alteration, modification, or used in any way not intended as described in this manual.

*The specifications and design are subject to change without notice.

Please contact your Topeak dealer with any questions.
For USA customer service, call: 1-800-250-3068
www.topeak.com